

DO NOT SCALE FROM THIS PRINT

DESIGNED AND DIMENSIONED IN INCHES[MILLIMETERS]
ALL DIMENSIONS REFERENCE EXCEPT AS SHOWN

PRF00-J-C-XX-23C-SD

SERIES
-00: SMP

GENDER
-J: JACK

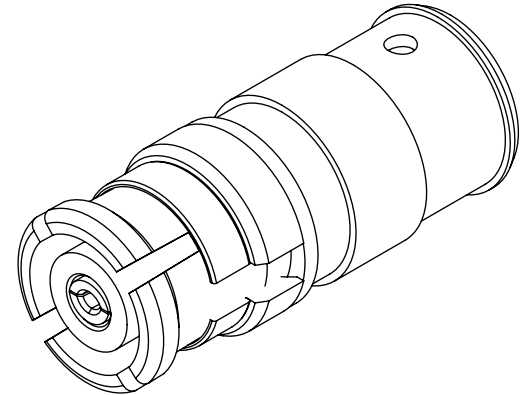
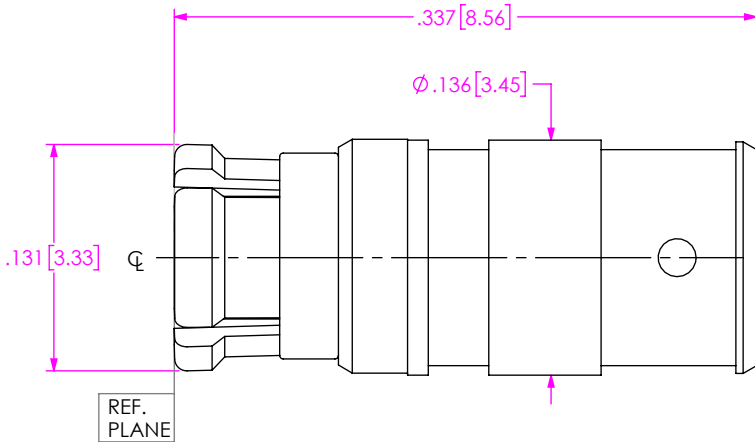
TYPE
-C: CABLE

FINISH
-EE: 50μ" EXTRA HEAVY GOLD
CENTER CONTACT, 50μ" EXTRA
HEAVY GOLD OUTER CONTACT

TERMINATION
-D: DIRECT SOLDER


ORIENTATION
-S: STRAIGHT

CABLE TYPE
-023C: MWC-2350CU-01

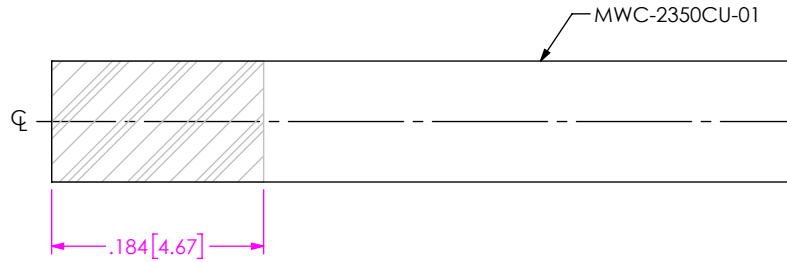


NOTES:

- MATERIAL:
CONTACT, BODY, BUSHING, ANTI-ROCK RING, EMI RING: BERYLLIUM COPPER
INSULATOR: PTFE
- FINISH:
CONTACT, BODY, ANTI-ROCK RING, EMI RING: 50μ" MIN. GOLD OVER 50μ" MIN. NICKEL PLATE

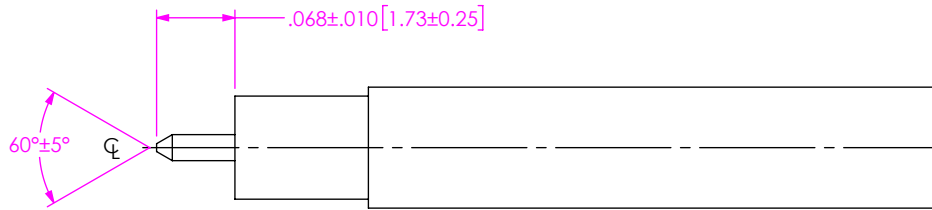
<p>PROPRIETARY NOTE</p> <p>THIS DOCUMENT CONTAINS CONFIDENTIAL AND PROPRIETARY INFORMATION AND ALL DESIGN, MANUFACTURING, REPRODUCTION, USE, PATENT RIGHTS AND SALES RIGHTS ARE EXPRESSLY RESERVED BY SAMTEC, INC. THIS DOCUMENT SHALL NOT BE DISCLOSED, IN WHOLE OR PART, TO ANY UNAUTHORIZED PERSON OR ENTITY NOR REPRODUCED, TRANSFERRED OR INCORPORATED IN ANY OTHER PROJECT IN ANY MANNER WITHOUT THE EXPRESS WRITTEN CONSENT OF SAMTEC, INC.</p>	 <p>520 PARK EAST BLVD, NEW ALBANY, IN 47150 PHONE: 812-944-6733 FAX: 812-948-5047 e-Mail info@SAMTEC.com code 55322</p>	
	<p>SHEET SCALE: 6:1 DO NOT SCALE DRAWING</p>	<p>DESCRIPTION: SMP SOCKET, DIRECT SOLDER FOR MWC-2350CU-01</p>
	<p>DWG. NO. PRF00-J-C-XX-23C-SD</p>	<p>BY: MATT M. 04/20/2022 SHEET 1 OF 2</p>

CABLE APPLICATION VIEWS



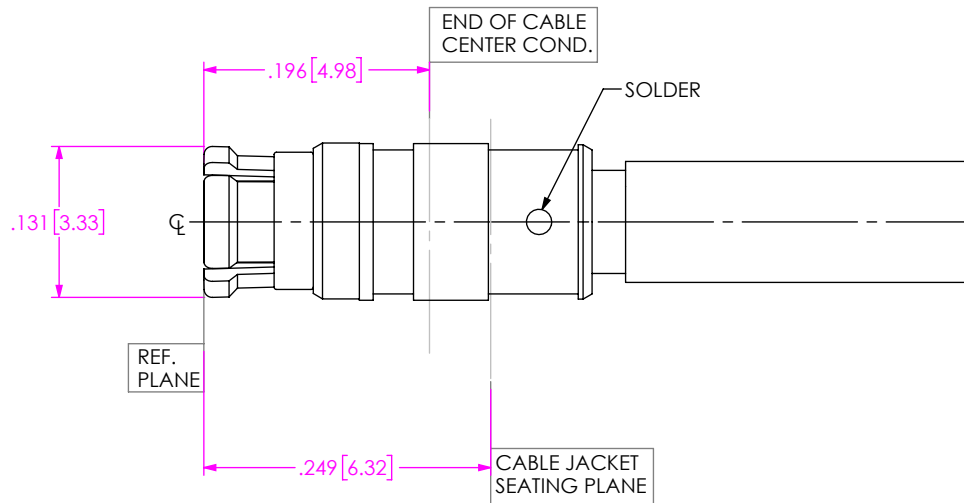
IN-PROCESS VIEW 1

1. STRIP THEN PRE-TIN CABLE OVER LENGTH SHOWN.




IN-PROCESS VIEW 2

1. TRIM CABLE TO EXPOSE AND POINT CENTER CONDUCTOR AS SHOWN. (DO NOT SCORE CENTER CONDUCTOR)



IN-PROCESS VIEW 3

1. APPLY HEAT TO BODY TAIL WHERE SHOWN AND INSERT CABLE INTO CONNECTOR SUB-ASSEMBLY UNTIL FULLY SEATED. FLOW ADDITIONAL SOLDER WHERE SHOWN IF REQUIRED.
 2. INSPECT CONNECTOR CONTACT AND INSULATOR INTERFACE DIMENSIONS USING THE APPROPRIATE GAGES TO VERIFY SURFACES ARE SUBFLUSH TO CONNECTOR INTERFACE WITHIN THE FOLLOWING RANGES:
 CONTACT = .000/.006 SUBFLUSH; INSULATOR = .000/.006 SUBFLUSH

<p>DO NOT SCALE DRAWING</p> <p>SHEET SCALE: 6:1</p>	<p>PROPRIETARY NOTE</p> <p>THIS DOCUMENT CONTAINS CONFIDENTIAL AND PROPRIETARY INFORMATION AND ALL DESIGN, MANUFACTURING, REPRODUCTION, USE, PATENT RIGHTS AND SALES RIGHTS ARE EXPRESSLY RESERVED BY SAMTEC, INC. THIS DOCUMENT SHALL NOT BE DISCLOSED, IN WHOLE OR PART, TO ANY UNAUTHORIZED PERSON OR ENTITY NOR REPRODUCED, TRANSFERRED OR INCORPORATED IN ANY OTHER PROJECT IN ANY MANNER WITHOUT THE EXPRESS WRITTEN CONSENT OF SAMTEC, INC.</p>	 <p>520 PARK EAST BLVD, NEW ALBANY, IN 47150 PHONE: 812-944-6733 FAX: 812-948-5047 e-Mail info@SAMTEC.com code 55322</p>
	<p>DESCRIPTION: SMP SOCKET, DIRECT SOLDER FOR MWC-2350CU-01</p>	
	<p>DWG. NO. PRF00-J-C-XX-23C-SD</p>	
<p>BY: MATT M. 04/20/2022</p>		<p>SHEET 2 OF 2</p>