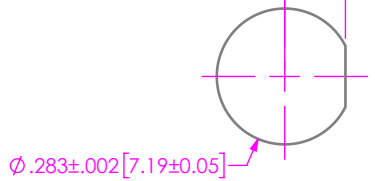


.1265±.0015 [3.21±0.04]

DO NOT SCALE FROM THIS PRINT

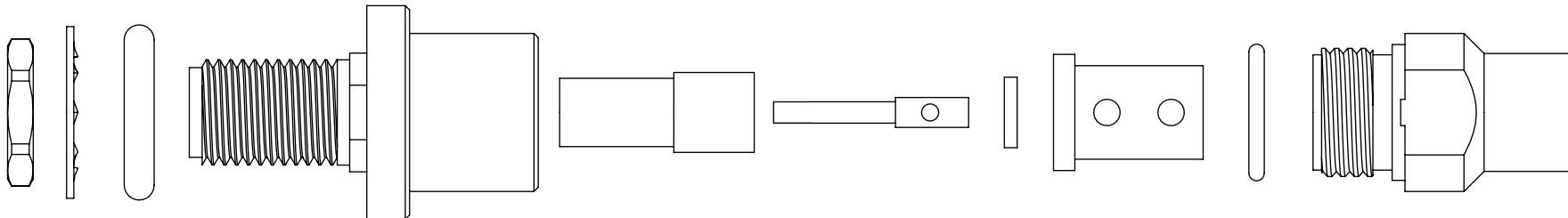
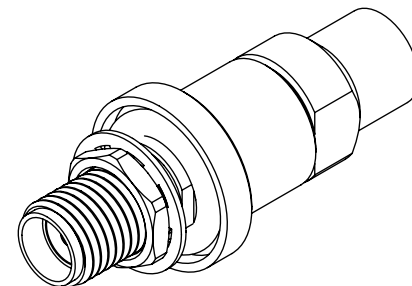
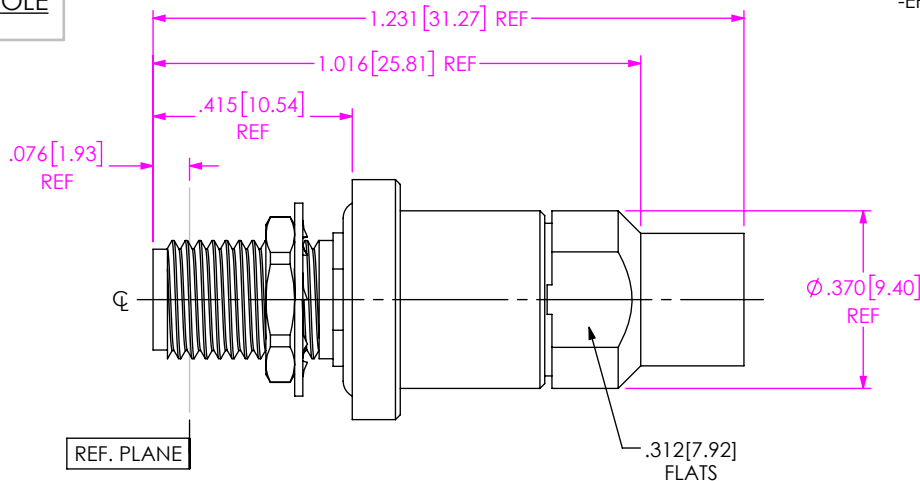


RECOMMENDED MOUNTING HOLE

DESIGNED & DIMENSIONED IN INCHES [MILLIMETERS]

PRF01-J-C-EP-142-BS

SERIES -01: SMA
 GENDER -J: JACK
 TYPE -C: CABLE
 FINISH -EP: 50µ" EXTRA HEAVY GOLD CENTER CONTACT, PASSIVATED OUTER CONTACT
 TERMINATION -S: SOLDER CLAMP
 ORIENTATION -B: BULKHEAD
 CABLE TYPE -142: HARBOUR LL142



EXPLODED VIEW
 NOT TO SCALE
 (FOR CLARITY ONLY)

NOTES:

- MATERIAL:
 BODY, LOCK WASHER, LOCK NUT & CLAMP NUT: STAINLESS STEEL.
 SOCKET: BERYLLIUM COPPER.
 SOLDER FERRULE: BRASS.
 O-RING: SILICONE RUBBER.
 INSULATOR: PTFE.
 DIELECTRIC BEADS: PTFE.
- FINISH:
 BODY, LOCK WASHER, LOCK NUT & CLAMP NUT: PASSIVATED.
 SOCKET & SOLDER FERRULE: GOLD OVER NICKEL PLATE,
 50 µIN MIN GOLD OVER 50 µIN MIN NICKEL.
- PERFORMANCE:
 IMPEDANCE: 50 OHMS
 FREQUENCY: DC TO 18 GHz
 VSWR: 1.14:1 MAXIMUM
 INSERTION LOSS: 0.03 x √f(GHz)
 DWV: 2150 Vrms
 PCI P/N: 3297.

UNLESS OTHERWISE SPECIFIED, DIMENSIONS ARE IN INCHES.
 TOLERANCES ARE:
 DECIMALS ANGLES
 .XX: ±.01 [0.3] 1°
 .XXX: ±.005 [0.13]
 .XXXX: ±.0005 [0.013]

PROPRIETARY NOTE
 THIS DOCUMENT CONTAINS CONFIDENTIAL AND PROPRIETARY INFORMATION AND ALL DESIGN, MANUFACTURING, REPRODUCTION, USE, PATENT RIGHTS AND SALES RIGHTS ARE EXPRESSLY RESERVED BY SAMTEC, INC. THIS DOCUMENT SHALL NOT BE DISCLOSED, IN WHOLE OR PART, TO ANY UNAUTHORIZED PERSON OR ENTITY NOR REPRODUCED, TRANSFERRED OR INCORPORATED IN ANY OTHER PROJECT IN ANY MANNER WITHOUT THE EXPRESS WRITTEN CONSENT OF SAMTEC, INC.



520 PARK EAST BLVD, NEW ALBANY, IN 47150
 PHONE: 812-944-6733 FAX: 812-948-5047
 e-Mail info@SAMTEC.com code 55322

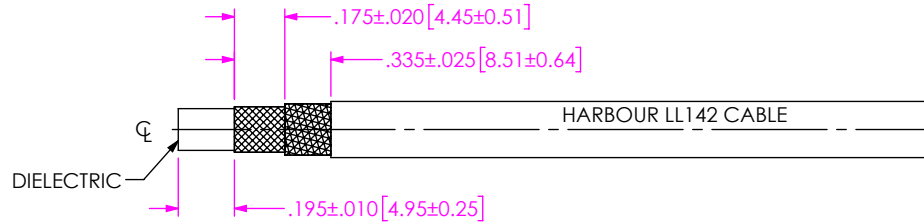
DO NOT SCALE DRAWING

SHEET SCALE: 2.5:1

DESCRIPTION: SMA BULKHEAD JACK, SOLDER CLAMP FOR HARBOUR LL142 CABLE

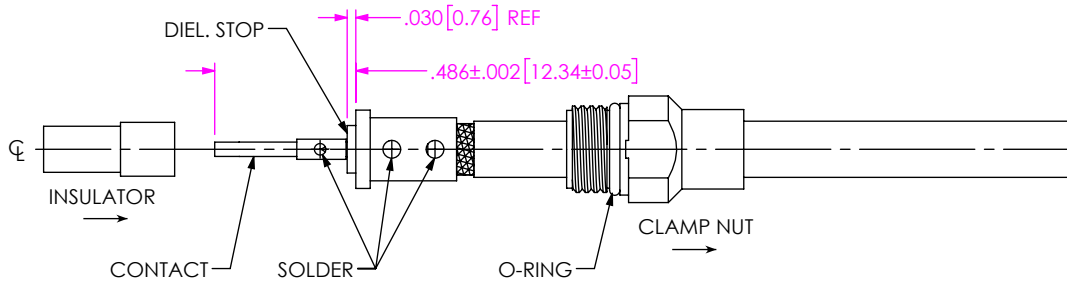
DWG. NO. PRF01-J-C-EP-142-BS

BY: HENSON T 08/01/2020 SHEET 1 OF 2



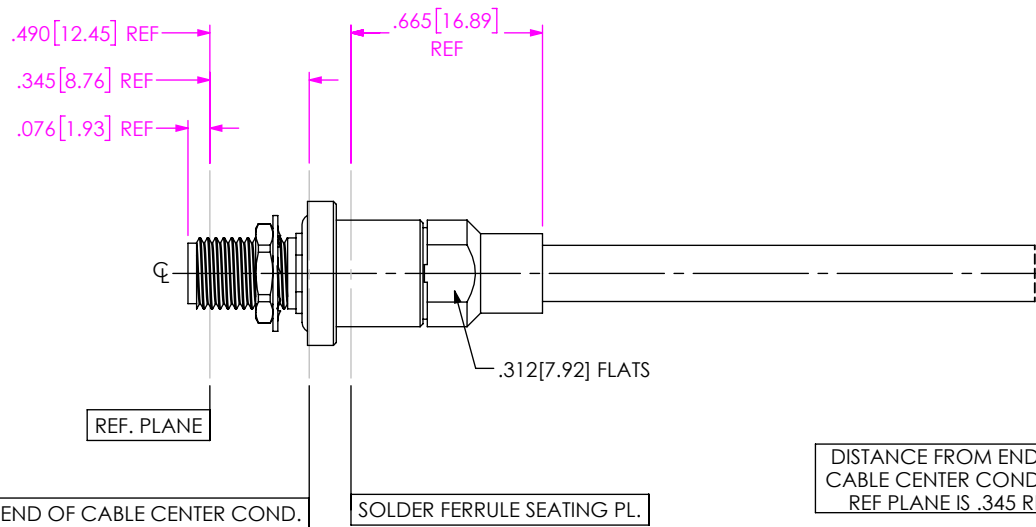
1. TRIM CABLE TO EXPOSE DIELECTRIC CORE AND BRAIDS AS SHOWN.

IN-PROCESS 1




- 2A. SLIDE CLAMP NUT OVER CABLE IN ORIENTATION AS SHOWN.
- 2B. INSERT CABLE INTO SOLDER FERRULE UNTIL INNER BRAID SEATS AND SOLDER TO BRAIDS WHERE SHOWN.
- 2C. TRIM DIELECTRIC CORE FLUSH WITH FACE OF SOLDER FERRULE.
- 2D. SLIDE DIELECTRIC STOP OVER CABLE CENTER CONDUCTOR AND SOLDER CONTACT FLUSH TO STOP TO DIMENSION SHOWN.
- 2E. SLIDE INSULATOR ONTO CONTACT AGAINST DIELECTRIC STOP.

IN-PROCESS 2



3. INSERT CABLE/CONTACT SUB-ASSEMBLY INTO CONNECTOR UNTIL SEATED AND TIGHTEN CLAMP NUT TO 25-35 IN-LBS.

IN-PROCESS 3

<p>DO NOT SCALE DRAWING</p> <p>SHEET SCALE: 3:2</p>	<p>PROPRIETARY NOTE</p> <p><small>THIS DOCUMENT CONTAINS CONFIDENTIAL AND PROPRIETARY INFORMATION AND ALL DESIGN, MANUFACTURING, REPRODUCTION, USE, PATENT RIGHTS AND SALES RIGHTS ARE EXPRESSLY RESERVED BY SAMTEC, INC. THIS DOCUMENT SHALL NOT BE DISCLOSED, IN WHOLE OR PART, TO ANY UNAUTHORIZED PERSON OR ENTITY NOR REPRODUCED, TRANSFERRED OR INCORPORATED IN ANY OTHER PROJECT IN ANY MANNER WITHOUT THE EXPRESS WRITTEN CONSENT OF SAMTEC, INC.</small></p>	 <p>520 PARK EAST BLVD, NEW ALBANY, IN 47150 PHONE: 812-944-6733 FAX: 812-948-5047 e-Mail: info@SAMTEC.com code 55322</p>
	<p>DESCRIPTION: SMA BULKHEAD JACK, SOLDER CLAMP FOR HARBOUR LL142 CABLE</p>	
	<p>DWG. NO. PRF01-J-C-EP-142-BS</p>	
<p>BY: HENSON T 08/01/2020 SHEET 2 OF 2</p>		