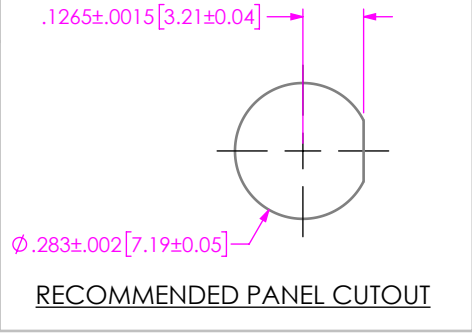
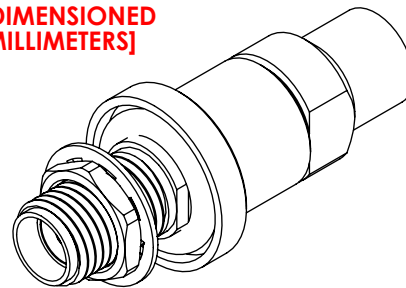


DO NOT SCALE FROM THIS PRINT



DESIGNED & DIMENSIONED IN INCHES [MILLIMETERS]



PRF01-J-C-EP-190-BS-1

SERIES
-01: SMA

GENDER
-J: JACK

TYPE
-C: CABLE

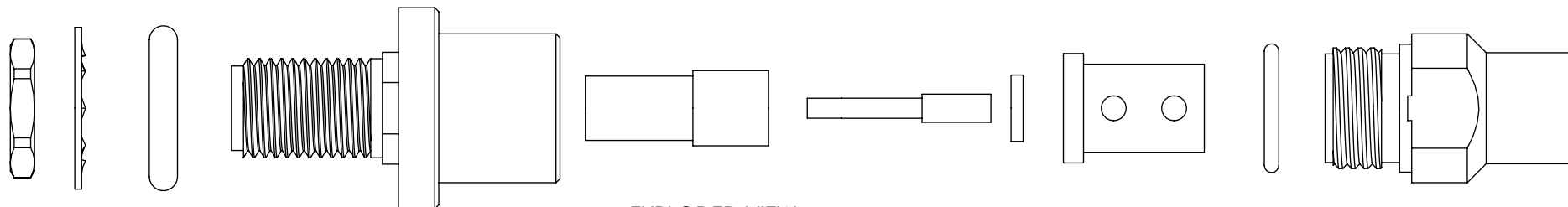
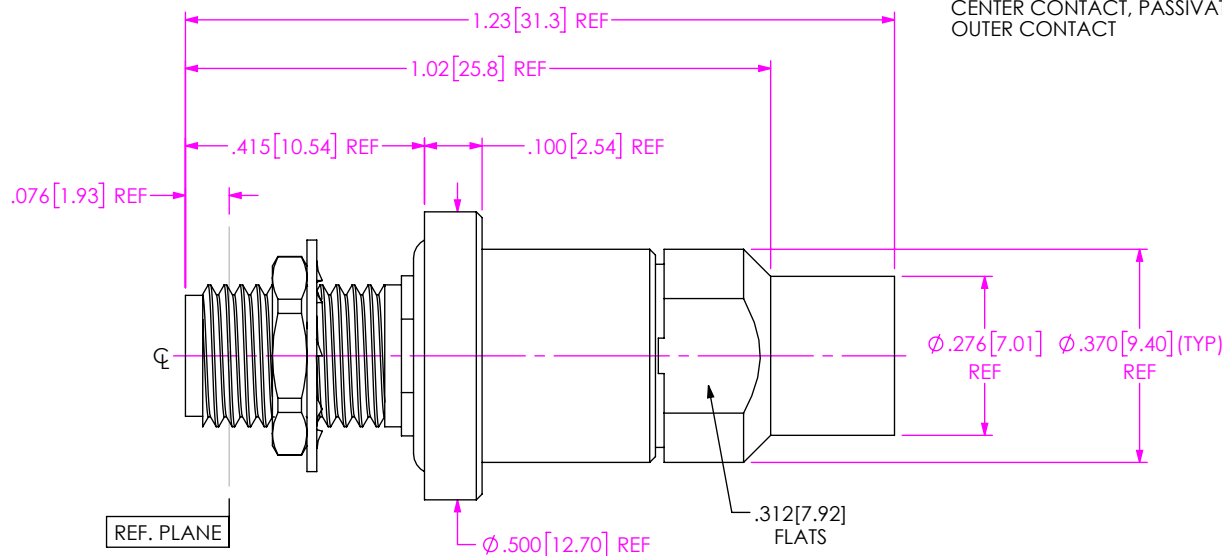
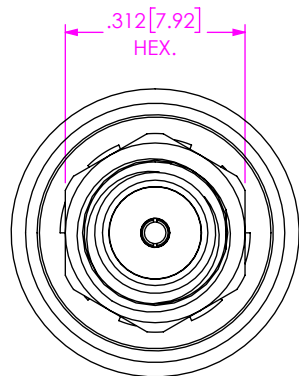
OPTION
-1

TERMINATION
-S: SOLDER CLAMP

ORIENTATION
-B: BULKHEAD

CABLE TYPE
-190: SEMFLEX HP190

FINISH
-EP: 50μ" EXTRA HEAVY GOLD CENTER CONTACT, PASSIVATED OUTER CONTACT



EXPLODED VIEW
NOT TO SCALE
(FOR CLARITY ONLY)

NOTES:

- MATERIAL:
BODY, LOCK WASHER, LOCK NUT & CLAMP NUT: STAINLESS STEEL.
CONTACT: BERYLLIUM COPPER.
SOLDER FERRULE: BRASS.
O-RING: SILICONE RUBBER.
INSULATOR: PTFE.
BEAD: PTFE.
- FINISH:
BODY, LOCK WASHER, LOCK NUT & CLAMP NUT: PASSIVATED.
CONTACT & SOLDER FERRULE: GOLD OVER NICKEL PLATE,
50 μIN MIN GOLD OVER 50 μIN MIN NICKEL.
- PCI P/N: 3298.

UNLESS OTHERWISE SPECIFIED, DIMENSIONS ARE IN INCHES.

TOLERANCES ARE:

DECIMALS ANGLES
.XX: ±.01 [0.3] 1°
.XXX: ±.005 [0.13]
.XXXX: ±.0005 [0.013]

PROPRIETARY NOTE

THIS DOCUMENT CONTAINS CONFIDENTIAL AND PROPRIETARY INFORMATION AND ALL DESIGN, MANUFACTURING, REPRODUCTION, USE, PATENT RIGHTS AND SALES RIGHTS ARE EXPRESSLY RESERVED BY SAMTEC, INC. THIS DOCUMENT SHALL NOT BE DISCLOSED, IN WHOLE OR PART, TO ANY UNAUTHORIZED PERSON OR ENTITY NOR REPRODUCED, TRANSFERRED OR INCORPORATED IN ANY OTHER PROJECT IN ANY MANNER WITHOUT THE EXPRESS WRITTEN CONSENT OF SAMTEC, INC.



520 PARK EAST BLVD, NEW ALBANY, IN 47150
PHONE: 812-944-6733 FAX: 812-948-5047
e-Mail: info@SAMTEC.com code 55322

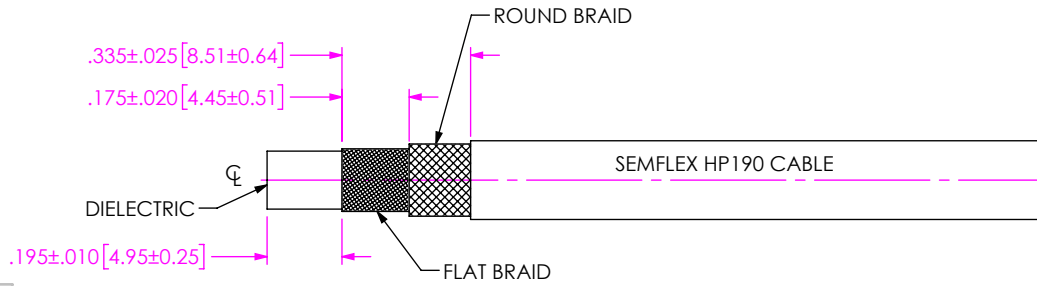
DO NOT SCALE DRAWING

SHEET SCALE: 3:1

DESCRIPTION: SMA BULKHEAD JACK, SOLDER CLAMP FOR SEMFLEX HP190 CABLE

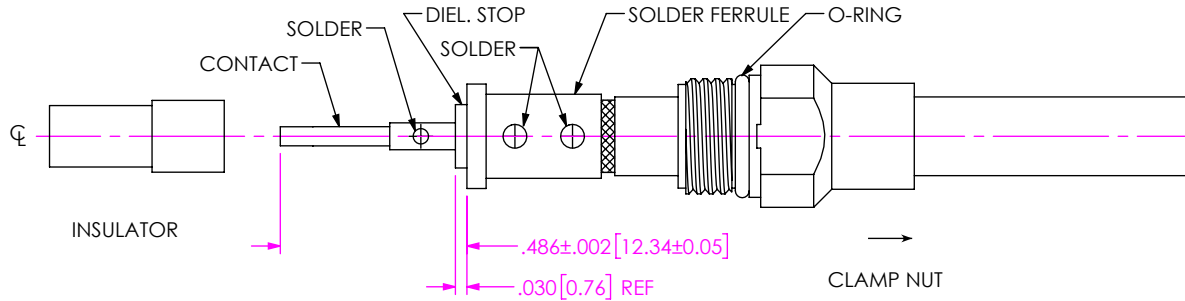
DWG. NO. PRF01-J-C-EP-190-BS-1

BY: EVE L 03/02/2022 SHEET 1 OF 2



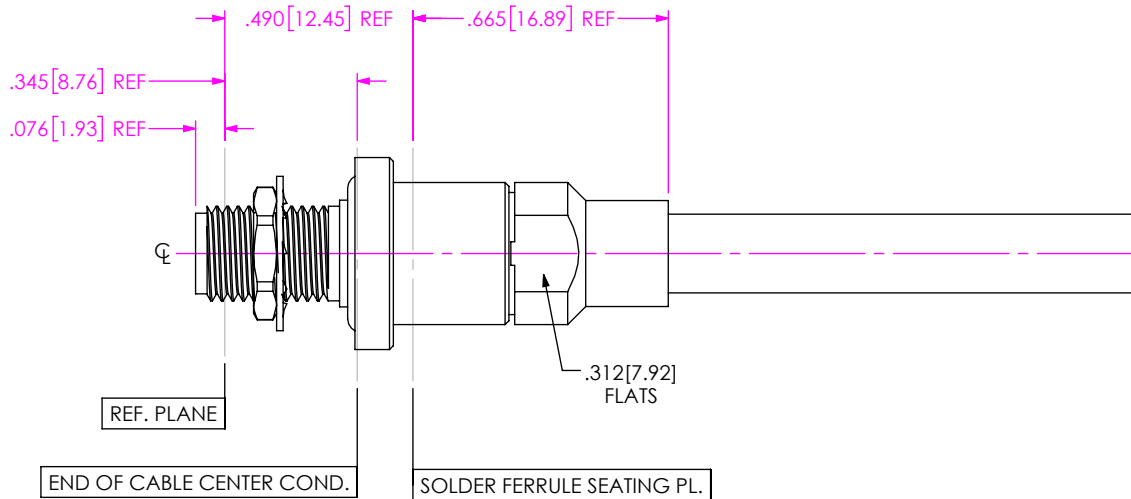
1. TRIM CABLE TO EXPOSE DIELECTRIC AND BRAIDS AS SHOWN.

IN-PROCESS 1



- 2A. SLIDE CLAMP NUT OVER CABLE IN ORIENTATION AS SHOWN.
- 2B. INSERT CABLE INTO SOLDER FERRULE UNTIL INNER BRAID SEATS AND SOLDER TO BRAIDS WHERE SHOWN.
- 2C. TRIM CABLE DIELECTRIC FLUSH WITH FACE OF FERRULE.
- 2D. SLIDE DIELECTRIC STOP OVER CABLE CENTER CONDUCTOR AND SOLDER CONTACT FLUSH TO STOP TO DIMENSION SHOWN.
- 2E. SLIDE INSULATOR ONTO CONTACT AGAINST DIELECTRIC STOP.

IN-PROCESS 2



3. INSERT CABLE/CONTACT SUB-ASSEMBLY INTO CONNECTOR UNTIL SEATED AND TIGHTEN CLAMP NUT TO 25-35 IN-LBS.

IN-PROCESS 3

PROPRIETARY NOTE
 THIS DOCUMENT CONTAINS CONFIDENTIAL AND PROPRIETARY INFORMATION AND ALL DESIGN, MANUFACTURING, REPRODUCTION, USE, PATENT RIGHTS AND SALES RIGHTS ARE EXPRESSLY RESERVED BY SAMTEC, INC. THIS DOCUMENT SHALL NOT BE DISCLOSED, IN WHOLE OR PART, TO ANY UNAUTHORIZED PERSON OR ENTITY NOR REPRODUCED, TRANSFERRED OR INCORPORATED IN ANY OTHER PROJECT IN ANY MANNER WITHOUT THE EXPRESS WRITTEN CONSENT OF SAMTEC, INC.



520 PARK EAST BLVD, NEW ALBANY, IN 47150
 PHONE: 812-944-6733 FAX: 812-948-5047
 e-Mail info@SAMTEC.com code 55322

DO NOT SCALE DRAWING

SHEET SCALE: 2:1

DESCRIPTION: SMA BULKHEAD JACK, SOLDER CLAMP FOR SEMFLEX HP 190 CABLE

DWG. NO. PRF01-J-C-EP-190-BS-1

BY: EVE L 03/02/2022 SHEET 2 OF 2