

**DESIGNED & DIMENSIONED IN INCHES[MILLIMETERS]
ALL DIMENSIONS REFERENCE EXCEPT AS SHOWN**

DO NOT
SCALE FROM
THIS PRINT

PRF01-J-C-XX-047A-BD-1

SERIES
-01: SMA

GENDER
-J: JACK

TYPE
-C: CABLE

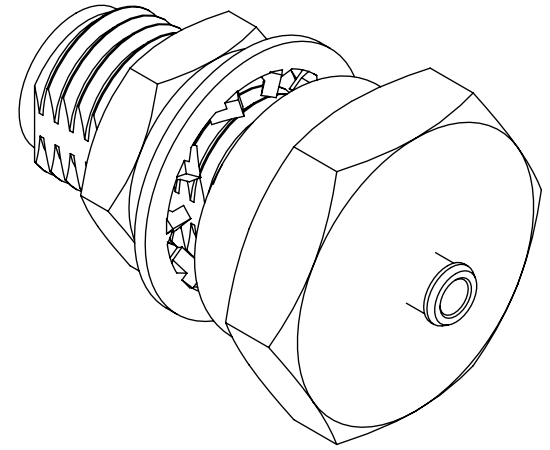
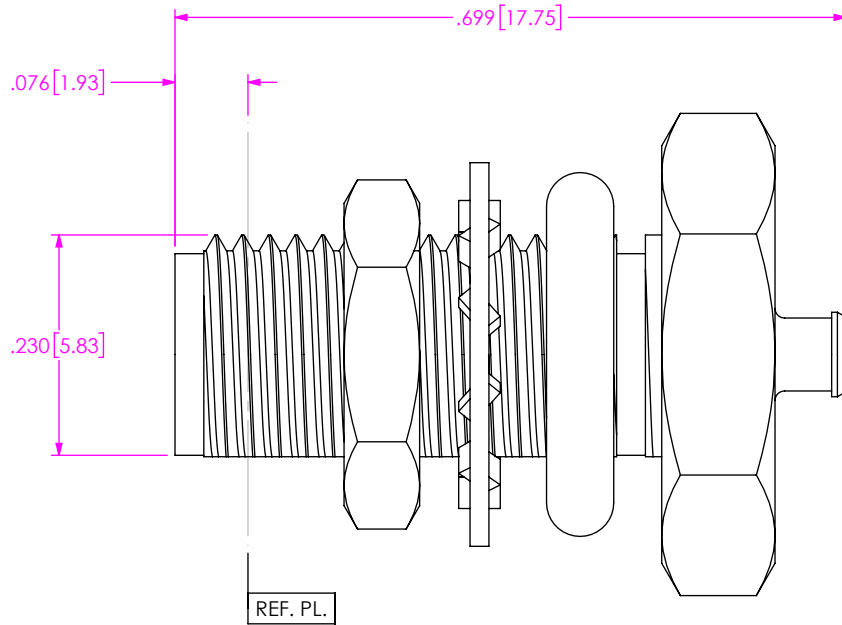
FINISH
-EG: 50μ" EXTRA HEAVY GOLD
CENTER CONTACT, 10μ" GOLD
OUTER CONTACT

OPTION
-1

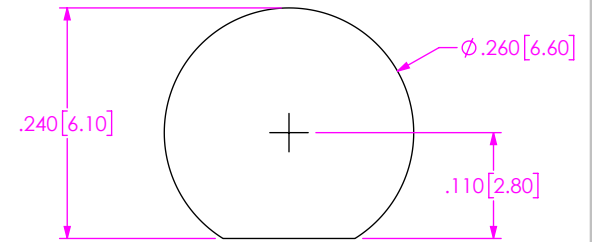
TERMINATION
-D: DIRECT SOLDER

ORIENTATION
-B: BULKHEAD

CABLE TYPE
-047A: CCA-047-PFA



RECOMMENDED PANEL CUTOUT
3.80[.150] MAX. PANEL THICKNESS



NOTES:

1. MATERIAL:

SOCKET: BERYLLIUM COPPER.
BODY, LOCK WASHER, LOCK NUT: BRASS.
INSULATOR: PTFE.
O-RING: SILICONE RUBBER.

2. FINISH:

BODY: 10μ" MIN. GOLD OVER 50μ" MIN. NICKEL PLATE
CONTACT: 50μ" MIN. GOLD OVER 50μ" MIN. NICKEL PLATE

PROPRIETARY NOTE

THIS DOCUMENT CONTAINS CONFIDENTIAL AND PROPRIETARY INFORMATION AND ALL DESIGN, MANUFACTURING, REPRODUCTION, USE, PATENT RIGHTS AND SALES RIGHTS ARE EXPRESSLY RESERVED BY SAMTEC, INC. THIS DOCUMENT SHALL NOT BE DISCLOSED, IN WHOLE OR PART, TO ANY UNAUTHORIZED PERSON OR ENTITY NOR REPRODUCED, TRANSFERRED OR INCORPORATED IN ANY OTHER PROJECT IN ANY MANNER WITHOUT THE EXPRESS WRITTEN CONSENT OF SAMTEC, INC.



520 PARK EAST BLVD, NEW ALBANY, IN 47150
PHONE: 812-944-6733 FAX: 812-948-5047
e-Mail: info@SAMTEC.com code 55322

DO NOT SCALE DRAWING
SHEET SCALE: 5:1

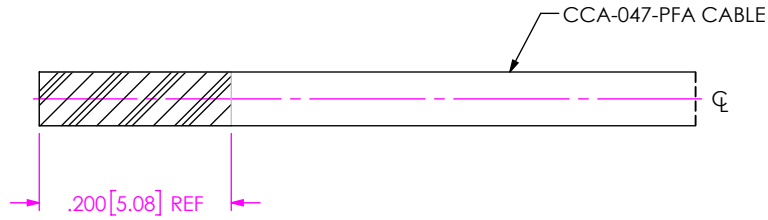
DESCRIPTION:
SMA BULKHEAD JACK FOR CCA-047-PFA CABLE

DWG. NO. PRF01-J-C-XX-047A-BD-1

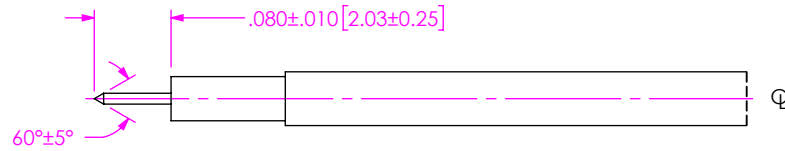
BY: EVE L 11/02/2021 SHEET 1 OF 2

CABLE APPLICATION VIEWS

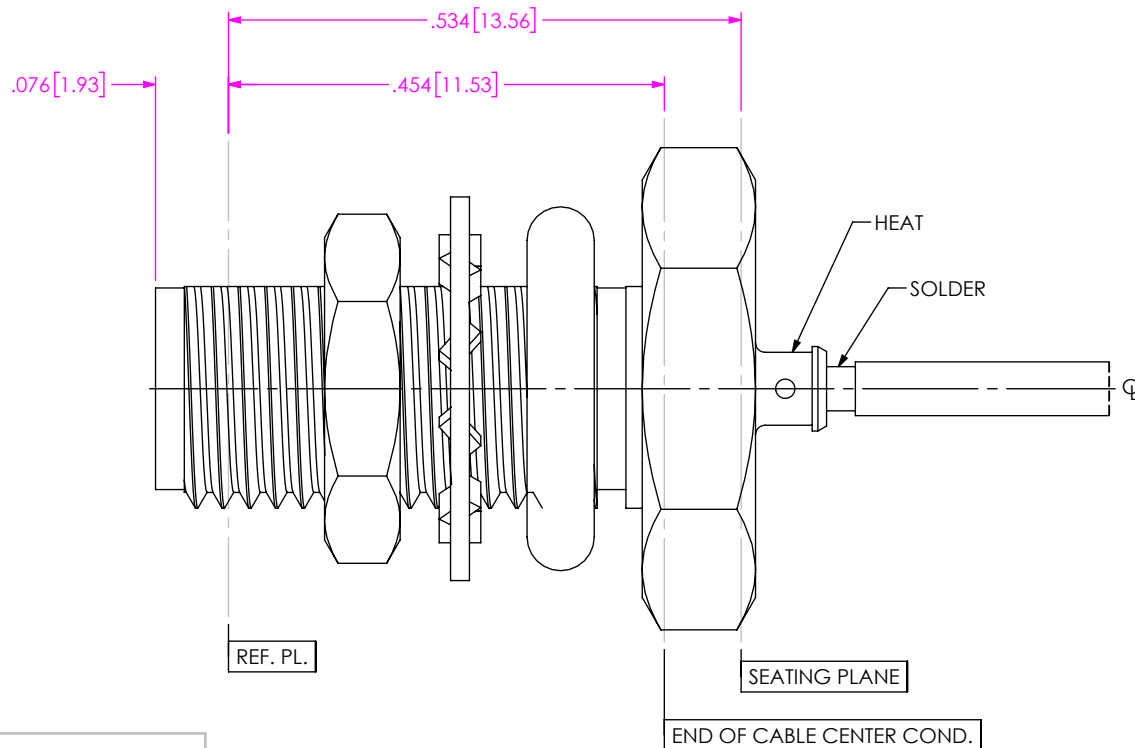
IN-PROCESS VIEW 1



IN-PROCESS VIEW 2



IN-PROCESS VIEW 3



PROPRIETARY NOTE
 THIS DOCUMENT CONTAINS CONFIDENTIAL AND PROPRIETARY INFORMATION AND ALL DESIGN, MANUFACTURING, REPRODUCTION, USE, PATENT RIGHTS AND SALES RIGHTS ARE EXPRESSLY RESERVED BY SAMTEC, INC. THIS DOCUMENT SHALL NOT BE DISCLOSED, IN WHOLE OR PART, TO ANY UNAUTHORIZED PERSON OR ENTITY NOR REPRODUCED, TRANSFERRED OR INCORPORATED IN ANY OTHER PROJECT IN ANY MANNER WITHOUT THE EXPRESS WRITTEN CONSENT OF SAMTEC, INC.



520 PARK EAST BLVD, NEW ALBANY, IN 47150
 PHONE: 812-944-6733 FAX: 812-948-5047
 e-Mail info@SAMTEC.com code 55322

DO NOT SCALE DRAWING

SHEET SCALE: 5:1

DESCRIPTION:
 SMA BULKHEAD JACK FOR CCA-047-PFA CABLE

DWG. NO. PRF01-J-C-XX-047A-BD-1

BY: EVE L 11/02/2021 SHEET 2 OF 2