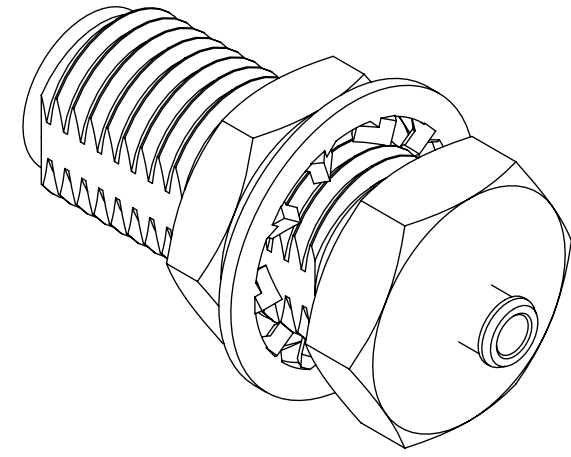
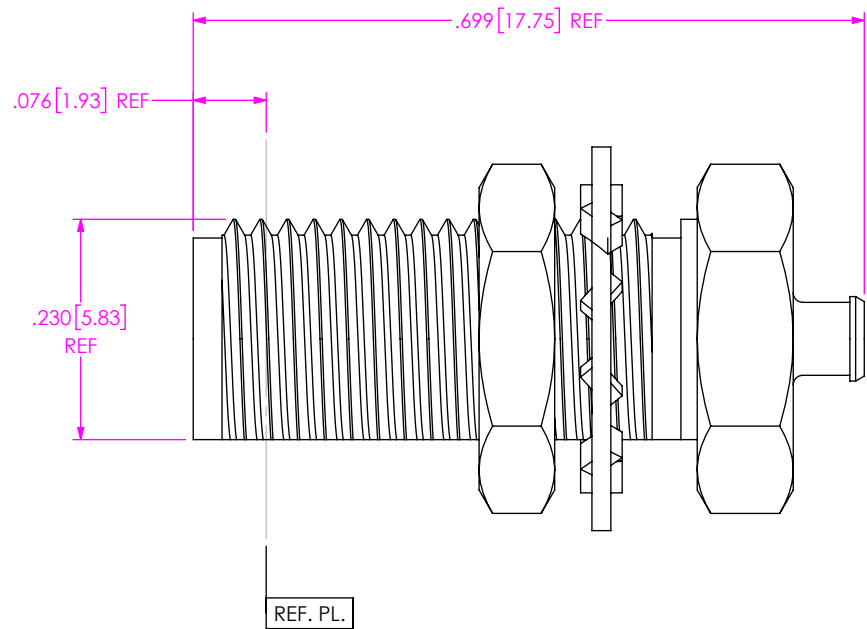


DO NOT SCALE FROM THIS PRINT

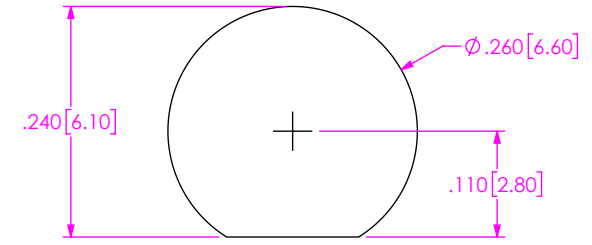
DESIGNED & DIMENSIONED IN INCHES[MILLIMETERS]
ALL DIMENSIONS REFERENCE EXCEPT AS SHOWN

PRF01-J-C-XX-047A-BD

SERIES -01: SMA
GENDER -J: JACK
TYPE -C: CABLE
FINISH -EG: 50µ" EXTRA HEAVY GOLD CENTER CONTACT, 10µ" GOLD OUTER CONTACT
TERMINATION -D: DIRECT SOLDER
ORIENTATION -B: BULKHEAD
CABLE TYPE -047A: CCA-047-PFA



RECOMMENDED PANEL CUTOUT
3.80[.150] MAX. PANEL THICKNESS



NOTES:

- MATERIAL:
SOCKET: BERYLLIUM COPPER.
BODY, LOCK WASHER, LOCK NUT: BRASS.
INSULATOR: PTFE.
- FINISH:
BODY: 10µ" MIN. GOLD OVER 50µ" MIN. NICKEL PLATE
CONTACT: 50µ" MIN. GOLD OVER 50µ" MIN. NICKEL PLATE

PROPRIETARY NOTE
THIS DOCUMENT CONTAINS CONFIDENTIAL AND PROPRIETARY INFORMATION AND ALL DESIGN, MANUFACTURING, REPRODUCTION, USE, PATENT RIGHTS AND SALES RIGHTS ARE EXPRESSLY RESERVED BY SAMTEC, INC. THIS DOCUMENT SHALL NOT BE DISCLOSED, IN WHOLE OR PART, TO ANY UNAUTHORIZED PERSON OR ENTITY NOR REPRODUCED, TRANSFERRED OR INCORPORATED IN ANY OTHER PROJECT IN ANY MANNER WITHOUT THE EXPRESS WRITTEN CONSENT OF SAMTEC, INC.



520 PARK EAST BLVD, NEW ALBANY, IN 47150
PHONE: 812-944-6733 FAX: 812-948-5047
e-Mail info@SAMTEC.com code 55322

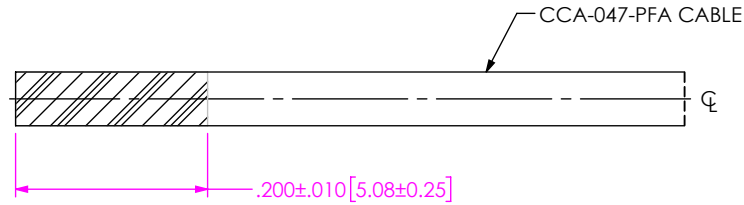
DO NOT SCALE DRAWING
SHEET SCALE: 5:1

DESCRIPTION:
SMA BULKHEAD JACK FOR CCA-047-PFA CABLE

DWG. NO. PRF01-J-C-XX-047A-BD

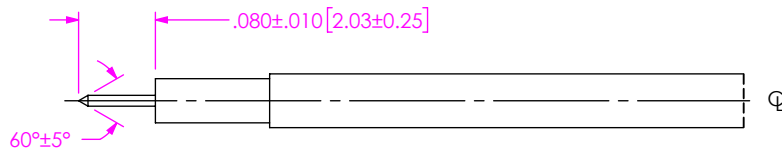
BY: EVE L 10/30/2021 SHEET 1 OF 2

CABLE APPLICATION VIEWS



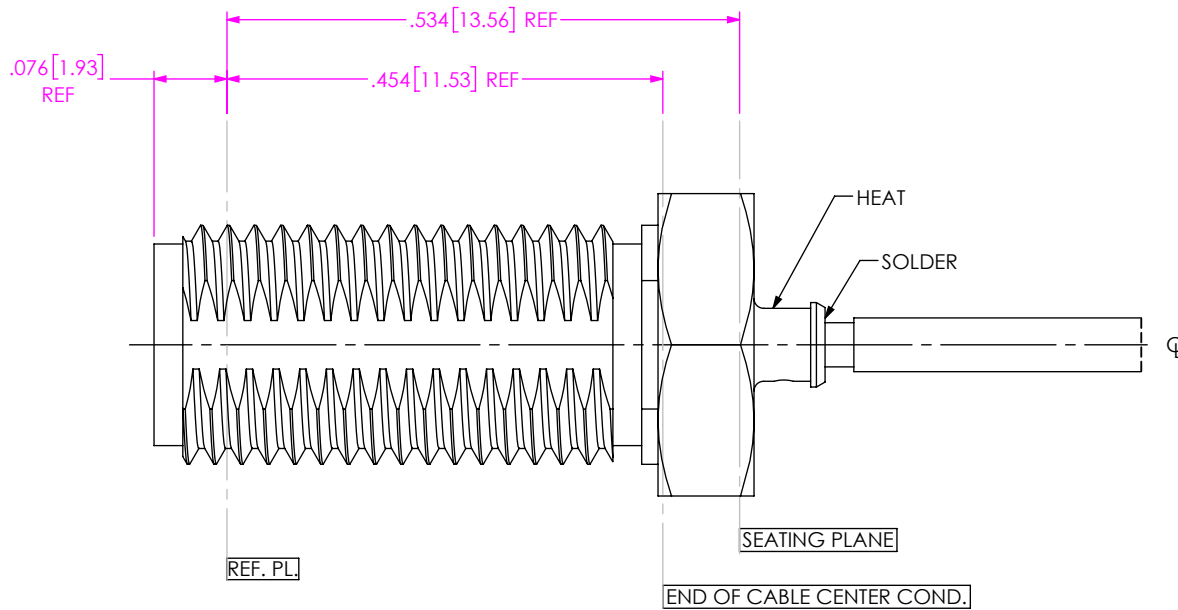
1. STRIP THEN PRE-TIN CABLE OVER LENGTH SHOWN.

IN-PROCESS VIEW 1



2. TRIM CABLE TO EXPOSE AND POINT CENTER CONDUCTOR AS SHOWN. (DO NOT SCORE CENTER CONDUCTOR)

IN-PROCESS VIEW 2



3. APPLY HEAT TO BODY TAIL WHERE SHOWN AND INSERT CABLE INTO CONNECTOR SUB-ASSEMBLY UNTIL FULLY SEATED. FLOW ADDITIONAL SOLDER WHERE SHOWN IF REQUIRED.

IN-PROCESS VIEW 3

PROPRIETARY NOTE
 THIS DOCUMENT CONTAINS CONFIDENTIAL AND PROPRIETARY INFORMATION AND ALL DESIGN, MANUFACTURING, REPRODUCTION, USE, PATENT RIGHTS AND SALES RIGHTS ARE EXPRESSLY RESERVED BY SAMTEC, INC. THIS DOCUMENT SHALL NOT BE DISCLOSED, IN WHOLE OR PART, TO ANY UNAUTHORIZED PERSON OR ENTITY NOR REPRODUCED, TRANSFERRED OR INCORPORATED IN ANY OTHER PROJECT IN ANY MANNER WITHOUT THE EXPRESS WRITTEN CONSENT OF SAMTEC, INC.



520 PARK EAST BLVD, NEW ALBANY, IN 47150
 PHONE: 812-944-6733 FAX: 812-948-5047
 e-Mail: info@SAMTEC.com code 55322

DO NOT SCALE DRAWING

SHEET SCALE: 5:1

DESCRIPTION:
 SMA BULKHEAD JACK FOR CCA-047-PFA CABLE

DWG. NO. PRF01-J-C-XX-047A-BD

BY: EVE L 10/30/2021 SHEET 2 OF 2