

DO NOT SCALE FROM THIS PRINT

DESIGNED & DIMENSIONED IN INCHES

PRF01-P-C-EE-405-SD-1

SERIES  
-01: SMA

GENDER  
-P: PLUG

TYPE  
-C: CABLE

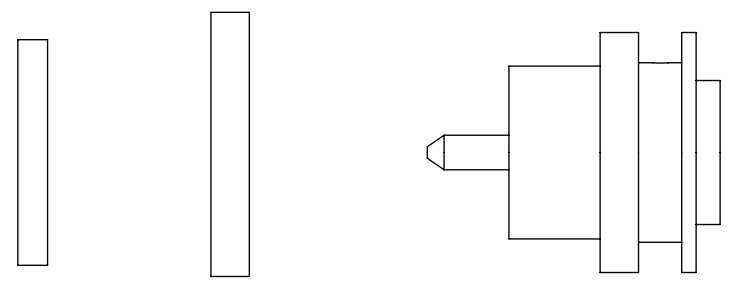
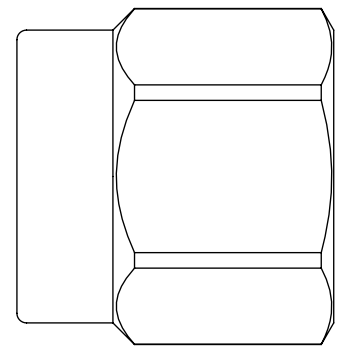
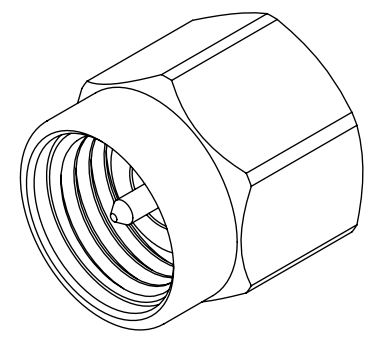
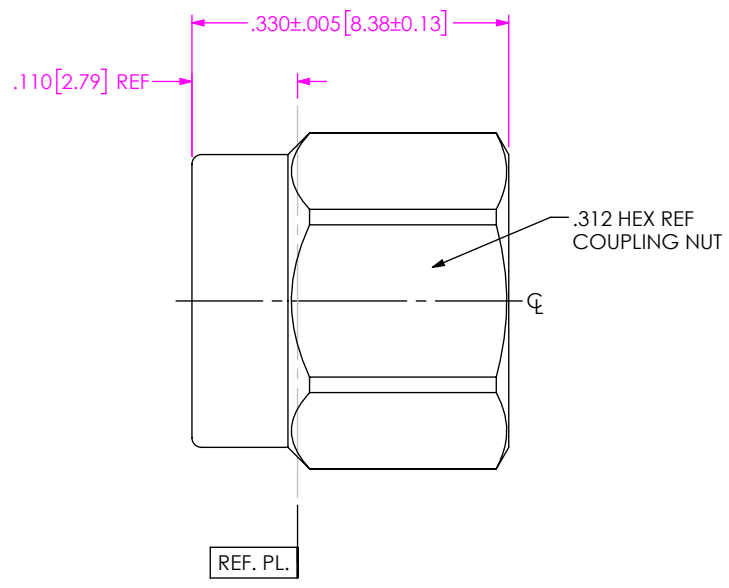
FINISH  
-EE: 50μ" EXTRA HEAVY GOLD CENTER CONTACT, 50μ" EXTRA HEAVY GOLD OUTER CONTACT

OPTION  
-1

TERMINATION  
-D: DIRECT SOLDER

ORIENTATION  
-S: STRAIGHT

CABLE TYPE  
-405: RG-405 SEMI-RIGID




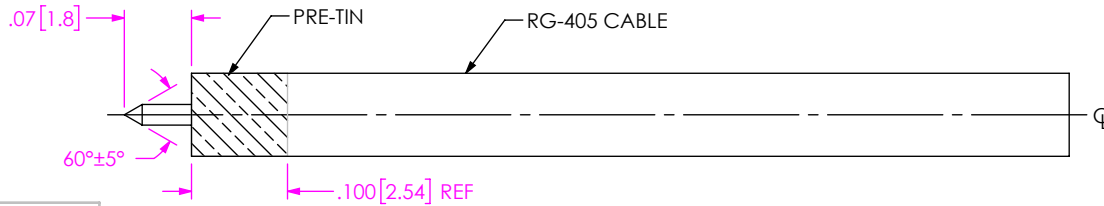
EXPLODED VIEW  
NOT TO SCALE  
(FOR CLARITY ONLY)

NOTES:

- MATERIAL:  
COUPLING NUT: STAINLESS STEEL  
BODY, CONTACT, LOCK RING: BERYLLIUM COPPER  
INSULATORS: PTFE  
GASKET: SILICONE RUBBER
- FINISH:  
COUPLING NUT: PASSIVATED  
BODY, CONTACT: 50μ" MIN. GOLD OVER 50μ" MIN. NICKEL PLATE
- PCI P/N: 3622

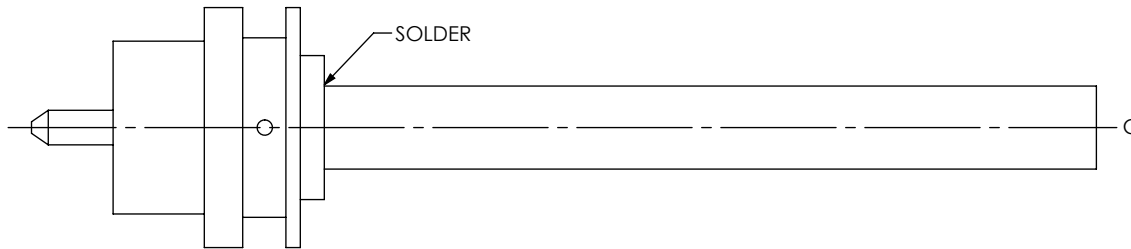
F:\DWG\MISC\MKTG\PRF01-P-C-EE-405-SD-1-MKT.SLDDRW

UNLESS OTHERWISE SPECIFIED, DIMENSIONS ARE IN INCHES. TOLERANCES ARE: DECIMALS                      ANGLES .XX: ±.01 [0.3]                      1° .XXX: ±.005 [0.13] .XXXX: ±.0020 [0.051]	* PROPRIETARY NOTE * THIS DOCUMENT CONTAINS CONFIDENTIAL AND PROPRIETARY INFORMATION AND ALL DESIGN, MANUFACTURING, REPRODUCTION, USE, PATENT RIGHTS AND SALES RIGHTS ARE EXPRESSLY RESERVED BY SAMTEC, INC. THIS DOCUMENT SHALL NOT BE DISCLOSED, IN WHOLE OR PART, TO ANY UNAUTHORIZED PERSON OR ENTITY NOR REPRODUCED, TRANSFERRED OR INCORPORATED IN ANY OTHER PROJECT IN ANY MANNER WITHOUT THE EXPRESS WRITTEN CONSENT OF SAMTEC, INC.	 520 PARK EAST BLVD, NEW ALBANY, IN 47150 PHONE: 812-944-6733    FAX: 812-948-5047 e-Mail: info@SAMTEC.com    code 55322	
		DESCRIPTION: SMA PLUG DIRECT SOLDER FOR RG-405 CABLE. LOW PROFILE	
		DWG. NO. PRF01-P-C-EE-405-SD-1	
DO NOT SCALE DRAWING                      SHEET SCALE: 5:1		BY: SHERRY W    11/1/2019	SHEET 1 OF 2



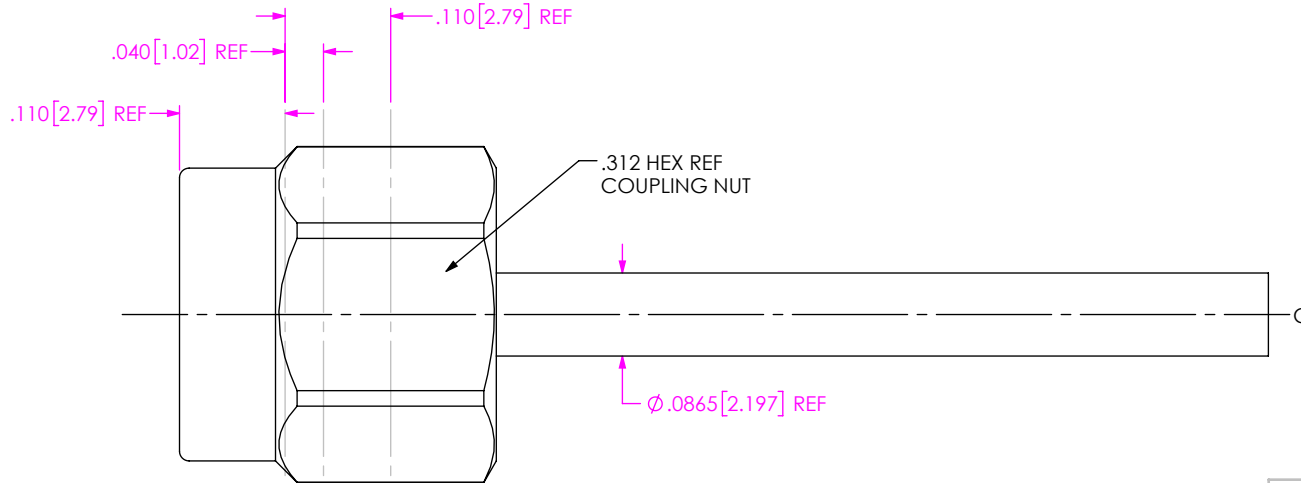
IN-PROCESS VIEW 1

1A. TRIM CABLE TO EXPOSE CENTER CONDUCTOR & POINT AS SHOWN  
 1B. PRE-TIN OUTER JACKET (OPTIONAL) TO APPROXIMATE DIMENSION SHOWN



IN-PROCESS VIEW 2

2A. INSERT CABLE INTO CONNECTOR BODY UNTIL CENTER CONDUCTOR PLUGS IN AND CABLE FULLY SEATS IN CONNECTOR BORE  
 2B. SOLDER CABLE TO BODY WHERE SHOWN.



IN-PROCESS VIEW 3

3. INSTALL LOCK RING, GASKET AND COUPLING NUT ONTO MAIN BODY USING APPROPRIATE SMA ASSEMBLY TOOLS

DISTANCE FROM END OF CABLE CENTER COND. TO REF PL. IS .040(REF.)

**PROPRIETARY NOTE**  
 THIS DOCUMENT CONTAINS CONFIDENTIAL AND PROPRIETARY INFORMATION AND ALL DESIGN, MANUFACTURING, REPRODUCTION, USE, PATENT RIGHTS AND SALES RIGHTS ARE EXPRESSLY RESERVED BY SAMTEC, INC. THIS DOCUMENT SHALL NOT BE DISCLOSED, IN WHOLE OR PART, TO ANY UNAUTHORIZED PERSON OR ENTITY NOR REPRODUCED, TRANSFERRED OR INCORPORATED IN ANY OTHER PROJECT IN ANY MANNER WITHOUT THE EXPRESS WRITTEN CONSENT OF SAMTEC, INC.



520 PARK EAST BLVD, NEW ALBANY, IN 47150  
 PHONE: 812-944-6733 FAX: 812-948-5047  
 e-Mail info@SAMTEC.com code 55322

DO NOT SCALE DRAWING

SHEET SCALE: 5:1

DESCRIPTION: SMA PLUG DIRECT SOLDER FOR RG-405 CABLE. LOW PROFILE

DWG. NO. PRF01-P-C-EE-405-SD-1

BY: SHERRY W 11/1/2019 SHEET 2 OF 2