

DO NOT SCALE FROM THIS PRINT

DESIGNED AND DIMENSIONED IN INCHES[MILLIMETERS]
ALL DIMENSIONS REFERENCE EXCEPT AS SHOWN

PRF01-P-C-EP-032B-SS

SERIES
-01: SMA

GENDER
-P: PLUG

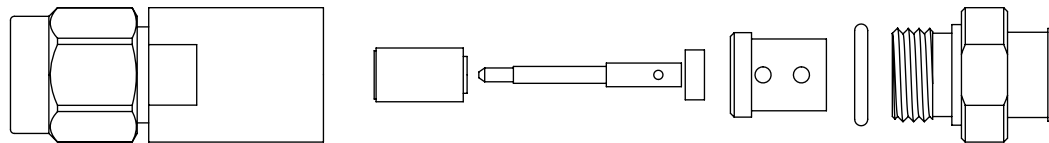
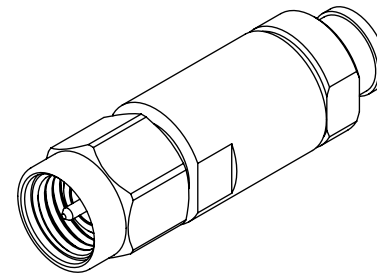
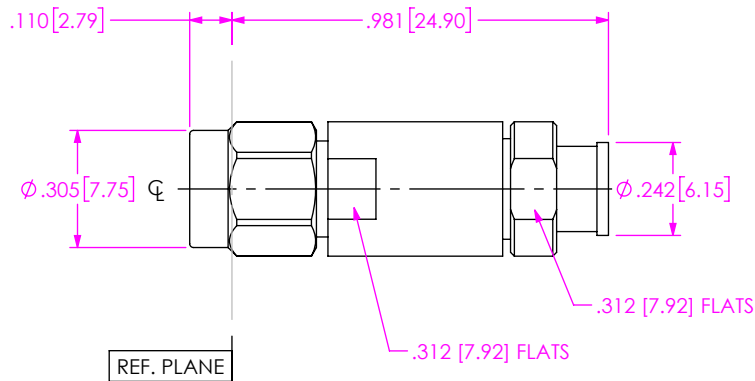
TYPE
-C: CABLE

FINISH
-EP: 50μ" EXTRA HEAVY GOLD CENTER CONTACT, PASSIVATED OUTER CONTACT

TERMINATION
-S: SOLDER CLAMP

ORIENTATION
-S: STRAIGHT

CABLE TYPE
-032B: SAMTEC LL032B-32GHz



EXPLODED VIEW
NOT TO SCALE
(FOR CLARITY ONLY)

- NOTES:
- MATERIAL:
BODY, COUPLING NUT & CLAMP NUT: 303 STAINLESS STEEL.
CONTACT: BeCu.
LOCK RING: BeCu.
SOLDER FERRULE: BRASS ALLOY 360.
GASKET & O-RING: SILICONE RUBBER.
INSULATOR: TEFLON.
DIELECTRIC STOP: PEEK.

- FINISH:
BODY, COUPLING NUT & CLAMP NUT: PASSIVATED.
SOLDER FERRULE, CONTACT: GOLD OVER NICKEL PLATE.

PROPRIETARY NOTE
THIS DOCUMENT CONTAINS CONFIDENTIAL AND PROPRIETARY INFORMATION AND ALL DESIGN, MANUFACTURING, REPRODUCTION, USE, PATENT RIGHTS AND SALES RIGHTS ARE EXPRESSLY RESERVED BY SAMTEC, INC. THIS DOCUMENT SHALL NOT BE DISCLOSED, IN WHOLE OR PART, TO ANY UNAUTHORIZED PERSON OR ENTITY NOR REPRODUCED, TRANSFERRED OR INCORPORATED IN ANY OTHER PROJECT IN ANY MANNER WITHOUT THE EXPRESS WRITTEN CONSENT OF SAMTEC, INC.



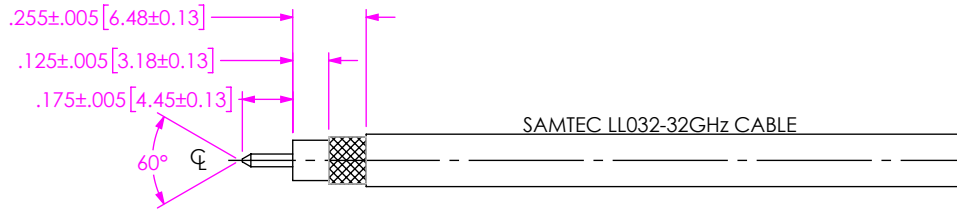
520 PARK EAST BLVD, NEW ALBANY, IN 47150
PHONE: 812-944-6733 FAX: 812-948-5047
e-Mail info@SAMTEC.com code 55322

DO NOT SCALE DRAWING
SHEET SCALE: 2:1

DESCRIPTION: SMA PLUG, SOLDER CLAMP FOR SAMTEC LL032 CABLE

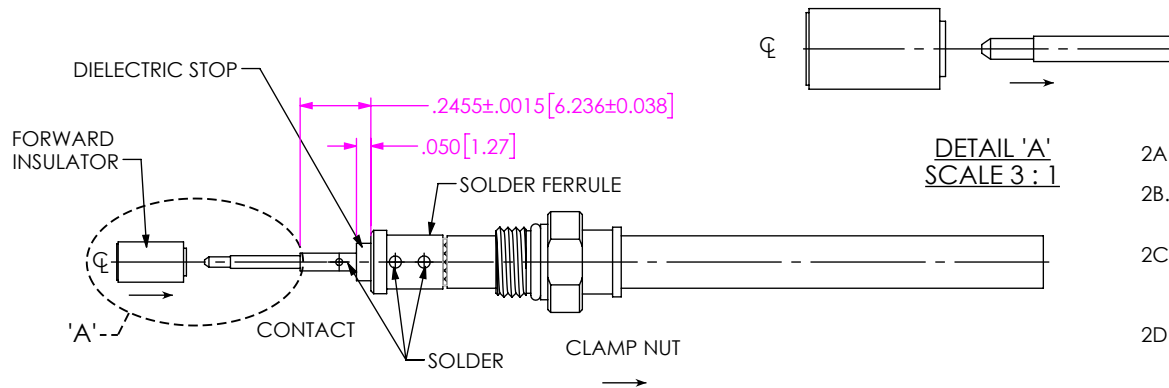
DWG. NO. PRF01-P-C-EP-032B-SS

BY: SCOTT G 7/2/2025 SHEET 1 OF 2



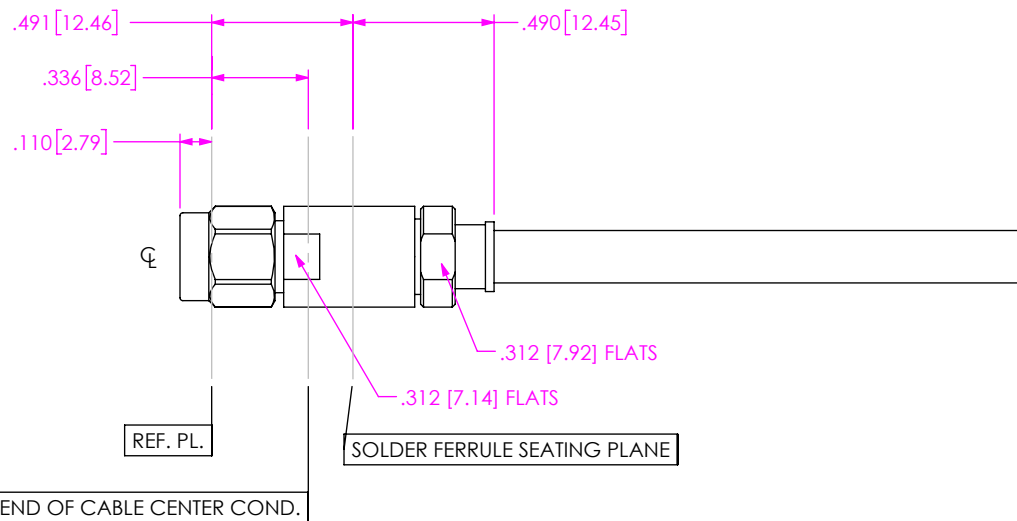
1A. TRIM CABLE TO EXPOSE FLAT WIRE AND BRAIDS AS SHOWN.

IN-PROCESS 1



- 2A. INSTALL O-RING ONTO CLAMP NUT OVER CABLE IN ORIENTATION AS SHOWN.
- 2B. INSERT CABLE INTO SOLDER FERRULE UNTIL INNER BRAID IS SEATED AND SOLDER CABLE BRAIDS WHERE SHOWN.
- 2C. SLIDE DIELECTRIC STOP (Ø .13 [3.30] OD) OVER CABLE CENTER CONDUCTOR AND SOLDER CONTACT FLUSH TO STOP TO DIMENSION SHOWN.
- 2D. SLIDE FORWARD INSULATOR ONTO CONTACT IN ORIENTATION AS SHOWN.

IN-PROCESS 2



3. INSERT CABLE/CONTACT SUB-ASSEMBLY INTO CONNECTOR UNTIL SEATED AND TIGHTEN CLAMP NUT TO 25-35 IN-LBS.

IN-PROCESS 3

<p>DO NOT SCALE DRAWING</p> <p>SHEET SCALE: 1.5:1</p>	<p>PROPRIETARY NOTE</p> <p>THIS DOCUMENT CONTAINS CONFIDENTIAL AND PROPRIETARY INFORMATION AND ALL DESIGN, MANUFACTURING, REPRODUCTION, USE, PATENT RIGHTS AND SALES RIGHTS ARE EXPRESSLY RESERVED BY SAMTEC, INC. THIS DOCUMENT SHALL NOT BE DISCLOSED, IN WHOLE OR PART, TO ANY UNAUTHORIZED PERSON OR ENTITY NOR REPRODUCED, TRANSFERRED OR INCORPORATED IN ANY OTHER PROJECT IN ANY MANNER WITHOUT THE EXPRESS WRITTEN CONSENT OF SAMTEC, INC.</p>	<p>samtec</p> <p>520 PARK EAST BLVD, NEW ALBANY, IN 47150 PHONE: 812-944-6733 FAX: 812-948-5047 e-Mail: info@SAMTEC.com code 55322</p>
	<p>DESCRIPTION: SMA PLUG, SOLDER CLAMP FOR SAMTEC LL032 CABLE</p>	
	<p>DWG. NO. PRF01-P-C-EP-032B-SS</p>	
<p>BY: SCOTT G 7/2/2025</p>		<p>SHEET 2 OF 2</p>