

DO NOT SCALE FROM THIS PRINT

DESIGNED & DIMENSIONED IN INCHES[MILLIMETERS]

PRF01-P-C-EP-135-SS

SERIES
-01: SMA

GENDER
-P: PLUG

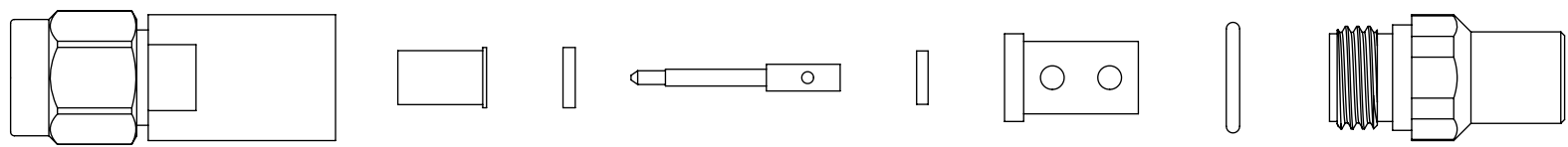
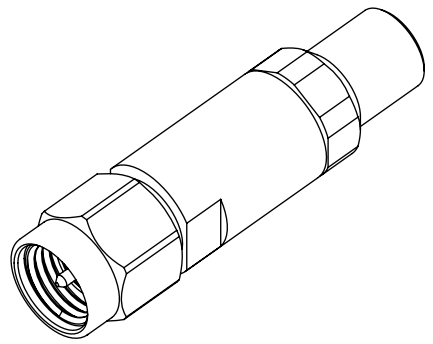
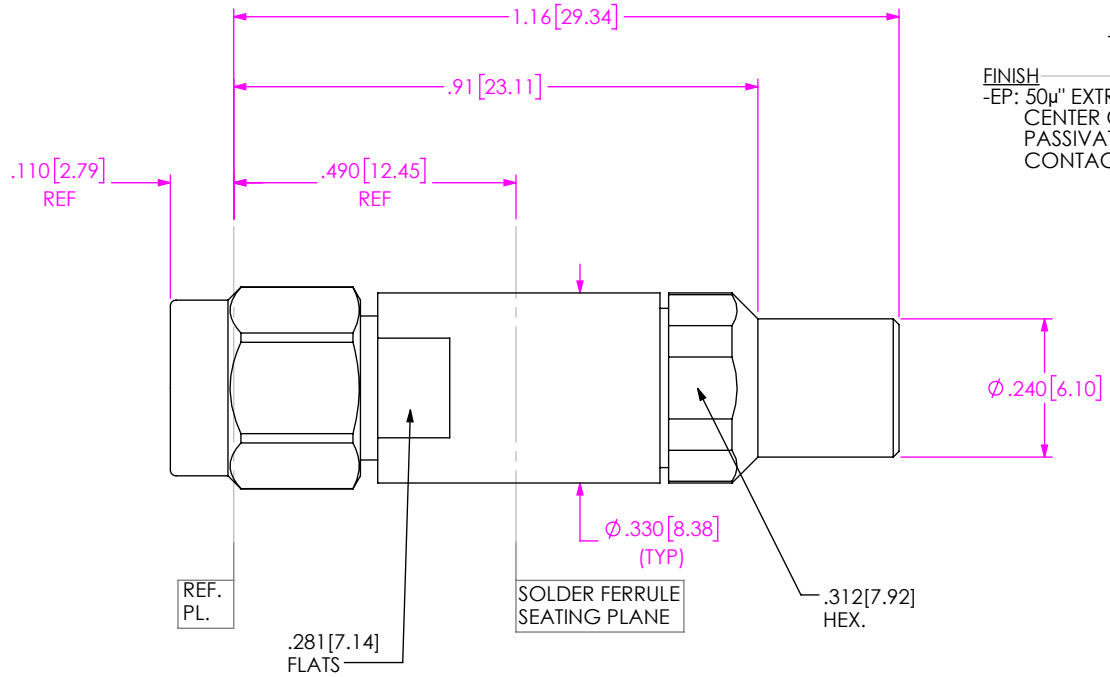
TYPE
-C: CABLE

FINISH
-EP: 50µ" EXTRA HEAVY GOLD CENTER CONTACT, PASSIVATED OUTER CONTACT

TERMINATION
-S: SOLDER CLAMP

ORIENTATION
-S: STRAIGHT

CABLE TYPE
-135: DYNAWAVE DF440W



EXPLODED VIEW
NOT TO SCALE
(FOR CLARITY ONLY)

NOTES:

- MATERIALS:**
BODY, COUPLING & CLAMP NUT: STAINLESS STEEL.
CONTACT & LOCK RING: BERYLLIUM COPPER.
SOLDER FERRULE: BRASS.
INSULATOR: PTFE.
DIELECTRIC BEADS: ULTEM.
GASKET & O-RING: SILICONE RUBBER.
- FINISH:**
CONTACT & SOLDER FERRULE: 50µ" MIN GOLD OVER 50µ" MIN NICKEL.
BODY, COUPLING & CLAMP NUT: PASSIVATED.
- INTERFACE:**
TYPE SMA PLUG PER MIL-STD-348. FIG. 310-1.
- PCI P/N: 3744.

UNLESS OTHERWISE SPECIFIED, DIMENSIONS ARE IN INCHES.
TOLERANCES ARE:
DECIMALS ANGLES
.XX: ±.02 2°
.XXX: ±.005
.XXXX: ±.0005

PROPRIETARY NOTE
THIS DOCUMENT CONTAINS CONFIDENTIAL AND PROPRIETARY INFORMATION AND ALL DESIGN, MANUFACTURING, REPRODUCTION, USE, PATENT RIGHTS AND SALES RIGHTS ARE EXPRESSLY RESERVED BY SAMTEC, INC. THIS DOCUMENT SHALL NOT BE DISCLOSED, IN WHOLE OR PART, TO ANY UNAUTHORIZED PERSON OR ENTITY NOR REPRODUCED, TRANSFERRED OR INCORPORATED IN ANY OTHER PROJECT IN ANY MANNER WITHOUT THE EXPRESS WRITTEN CONSENT OF SAMTEC, INC.



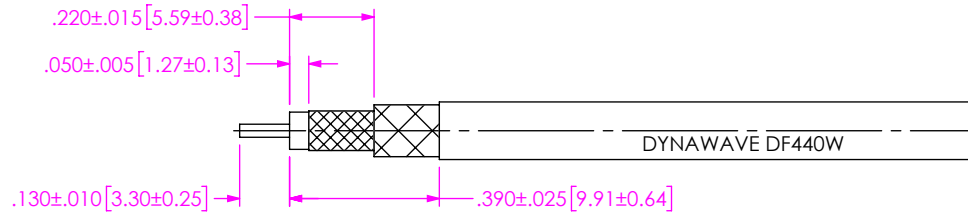
520 PARK EAST BLVD, NEW ALBANY, IN 47150
PHONE: 812-944-6733 FAX: 812-948-5047
e-Mail: info@SAMTEC.com code 55322

DO NOT SCALE DRAWING SHEET SCALE: 3:1

DESCRIPTION: SMA PLUG, SOLDER CLAMP FOR DYNAWAVE DF440W CABLE

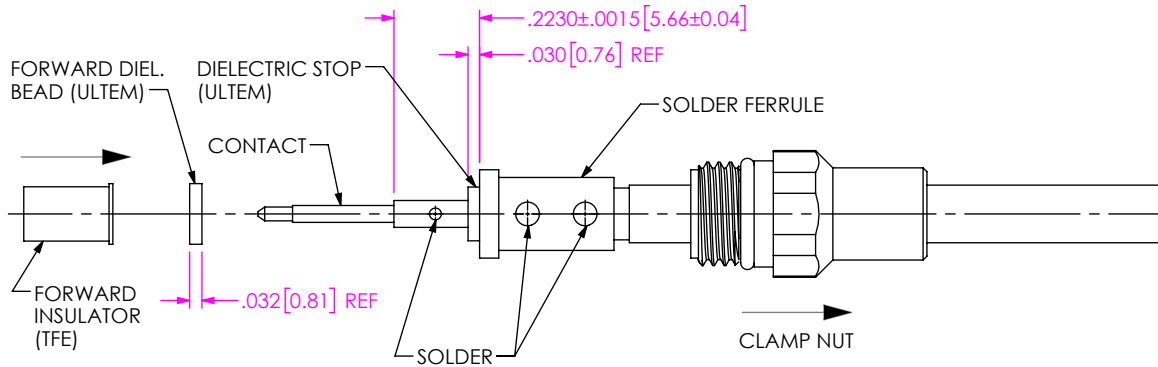
DWG. NO. PRF01-P-C-EP-135-SS

BY: WILLY Y 8/10/2022 SHEET 1 OF 2



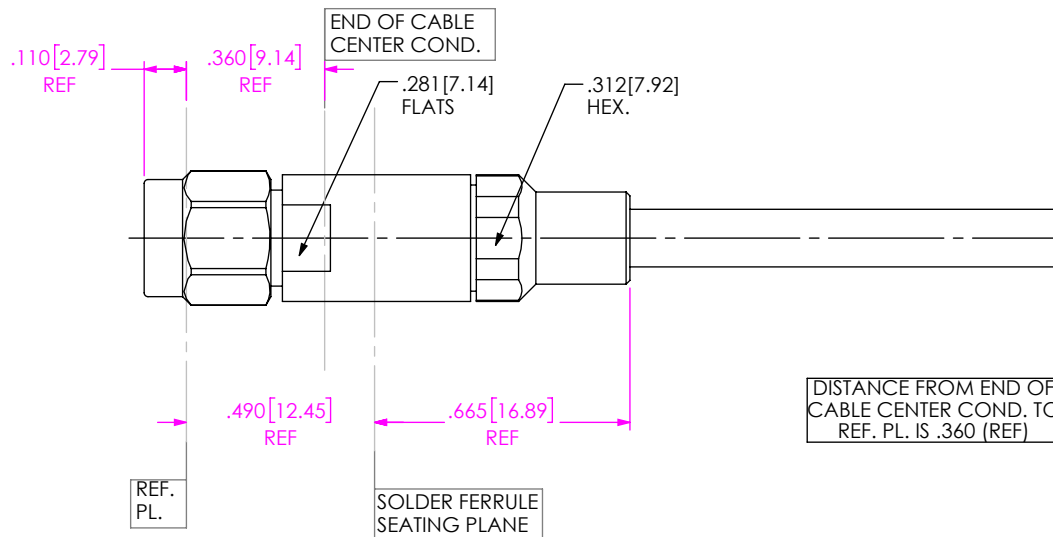
1. TRIM CABLE AS SHOWN.

IN-PROCESS VIEW 1



- 2A. SLIDE CLAMP NUT OVER CABLE AS SHOWN.
- 2B. SOLDER CABLE TO SOLDER FERRULE WITH DIELECTRIC FLUSH WITH FACE OF FERRULE.
- 2C. SLIDE DIELECTRIC STOP (Ø .140 OD) OVER CABLE CENTER CONDUCTOR AND SOLDER CONTACT FLUSH TO STOP TO DIMENSION SHOWN.
- 2D. SLIDE FORWARD INSULATOR & DIELECTRIC BEAD (Ø .158 OD) ONTO CONTACT.

IN-PROCESS VIEW 2



3. INDERT CABLE/CONTACT SUB-ASSEMBLY INTO CONNECTOR UNTIL SEATED AND TIGHTEN CLAMP NUT TO 25-35 IN-LBS.

IN-PROCESS VIEW 3

DISTANCE FROM END OF CABLE CENTER COND. TO REF. PL. IS .360 (REF)

PROPRIETARY NOTE
 THIS DOCUMENT CONTAINS CONFIDENTIAL AND PROPRIETARY INFORMATION AND ALL DESIGN, MANUFACTURING, REPRODUCTION, USE, PATENT RIGHTS AND SALES RIGHTS ARE EXPRESSLY RESERVED BY SAMTEC, INC. THIS DOCUMENT SHALL NOT BE DISCLOSED, IN WHOLE OR PART, TO ANY UNAUTHORIZED PERSON OR ENTITY NOR REPRODUCED, TRANSFERRED OR INCORPORATED IN ANY OTHER PROJECT IN ANY MANNER WITHOUT THE EXPRESS WRITTEN CONSENT OF SAMTEC, INC.



520 PARK EAST BLVD, NEW ALBANY, IN 47150
 PHONE: 812-944-6733 FAX: 812-948-5047
 e-Mail info@SAMTEC.com code 55322

DO NOT SCALE DRAWING

SHEET SCALE: 2:1

DESCRIPTION: SMA PLUG, SOLDER CLAMP FOR DYNAWAVE DF440W CABLE

DWG. NO. PRF01-P-C-EP-135-SS

BY: WILLY Y 8/10/2022 SHEET 2 OF 2