

DO NOT SCALE FROM THIS PRINT

DESIGNED & DIMENSIONED IN INCHES[MILLIMETERS]

PRF01-P-C-EP-142A-SS

SERIES  
-01: SMA

GENDER  
-P: PLUG

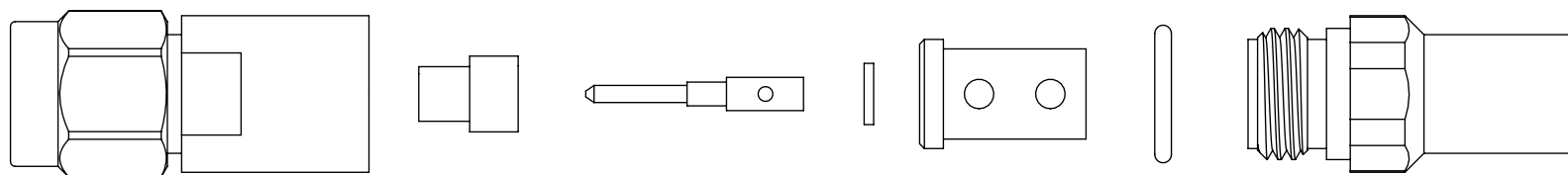
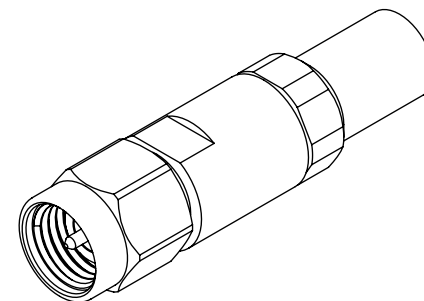
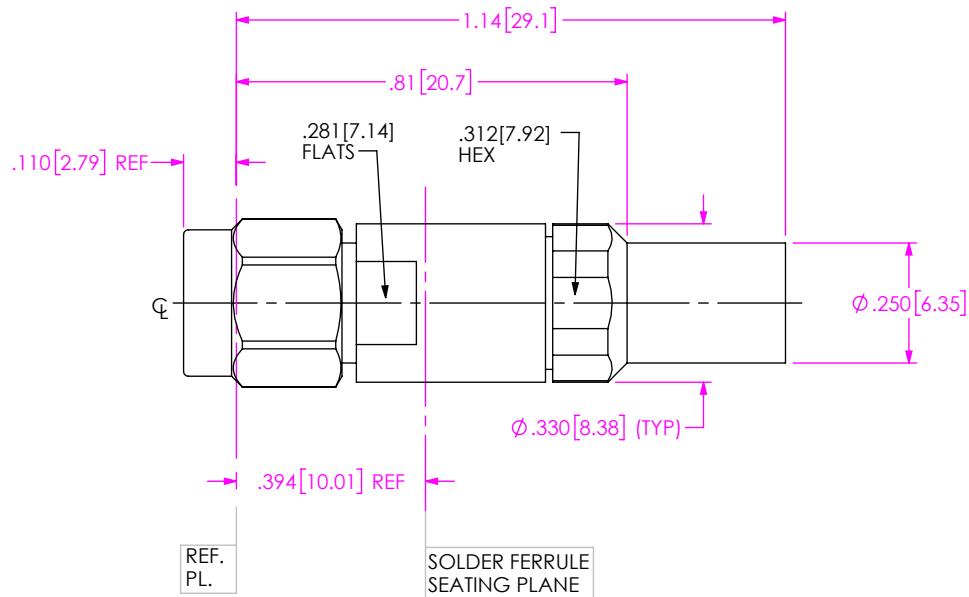
TYPE  
-C: CABLE

TERMINATION  
S: SOLDER CLAMP

ORIENTATION  
-S: STRAIGHT

CABLE TYPE  
-142A: HARBOUR SB142

FINISH  
-EP: 50µ" EXTRA HEAVY GOLD CENTER CONTACT, PASSIVATED OUTER CONTACT




EXPLODED VIEW  
NOT TO SCALE  
(FOR CLARITY ONLY)

NOTES:

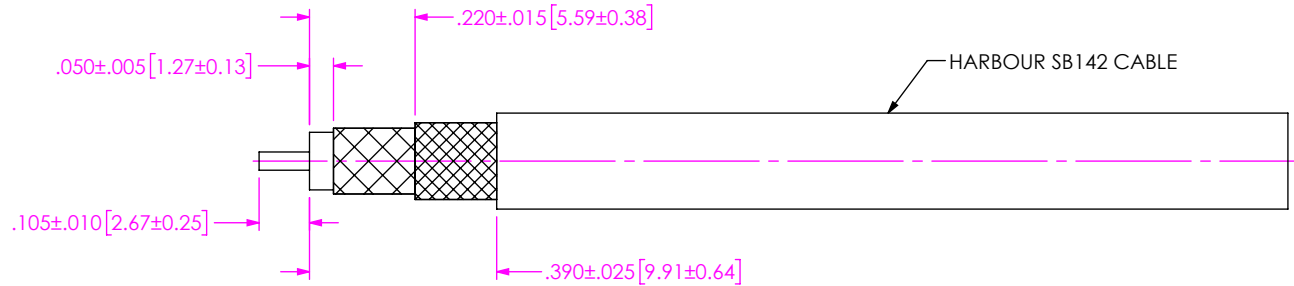
- MATERIAL:**  
 BODY, CLAMP NUT, COUPLING NUT: STAINLESS STEEL  
 CONTACT, LOCK RING: BERYLLIUM COPPER  
 SOLDER FERRULE: BRASS ALLOY  
 INSULATOR, BEAD: PTFE  
 GASKET, O-RING: SILICONE RUBBER
- FINISH:**  
 BODY, CLAMP NUT, COUPLING NUT: PASSIVATED  
 CONTACT, SOLDER FERRULE: 50µ" MIN. GOLD OVER 50µ" MIN. NICKEL PLATE
- PCI P/N: 3228

F:\DWG\MISC\MKTG\PRF01-P-C-EP-142A-SS-MKT.SLDDRW

UNLESS OTHERWISE SPECIFIED, DIMENSIONS ARE IN INCHES. TOLERANCES ARE: DECIMALS                      ANGLES .XX: ±.01 [0.3]                      1° .XXX: ±.005 [0.13] .XXXX: ±.0005 [0.013]	* PROPRIETARY NOTE * THIS DOCUMENT CONTAINS CONFIDENTIAL AND PROPRIETARY INFORMATION AND ALL DESIGN, MANUFACTURING, REPRODUCTION, USE, PATENT RIGHTS AND SALES RIGHTS ARE EXPRESSLY RESERVED BY SAMTEC, INC. THIS DOCUMENT SHALL NOT BE DISCLOSED, IN WHOLE OR PART, TO ANY UNAUTHORIZED PERSON OR ENTITY NOR REPRODUCED, TRANSFERRED OR INCORPORATED IN ANY OTHER PROJECT IN ANY MANNER WITHOUT THE EXPRESS WRITTEN CONSENT OF SAMTEC, INC.	 520 PARK EAST BLVD, NEW ALBANY, IN 47150 PHONE: 812-944-6733    FAX: 812-948-5047 e-Mail: info@SAMTEC.com    code 55322
DESCRIPTION: SMA PLUG, SOLDER CLAMP FOR HARBOUR SB142 CABLE		DWG. NO. PRF01-P-C-EP-142A-SS
BY: JERRY SU    4/29/2019		SHEET 1 OF 2

# CABLE APPLICATION VIEWS

1A. TRIM CABLE AS SHOWN.



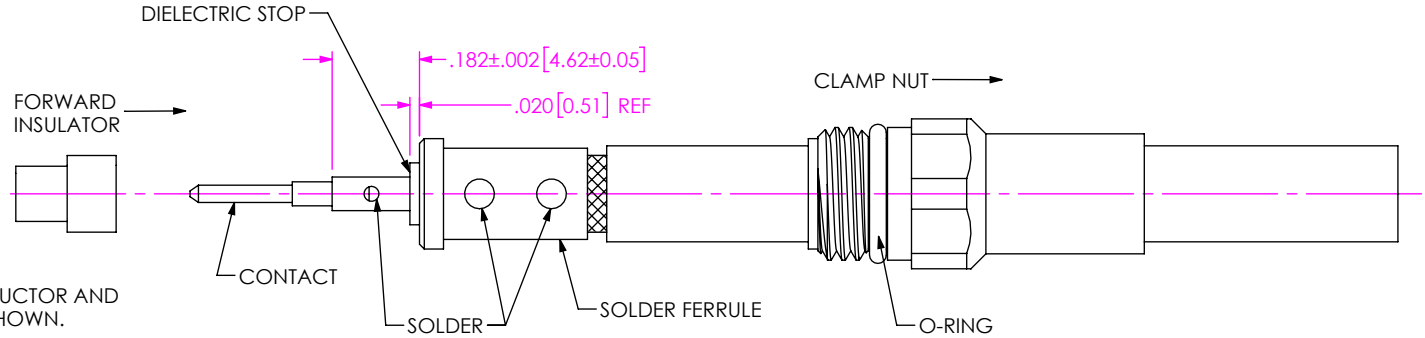
IN-PROCESS VIEW 1

2A. SLIDE CLAMP NUT OVER CABLE AS SHOWN.

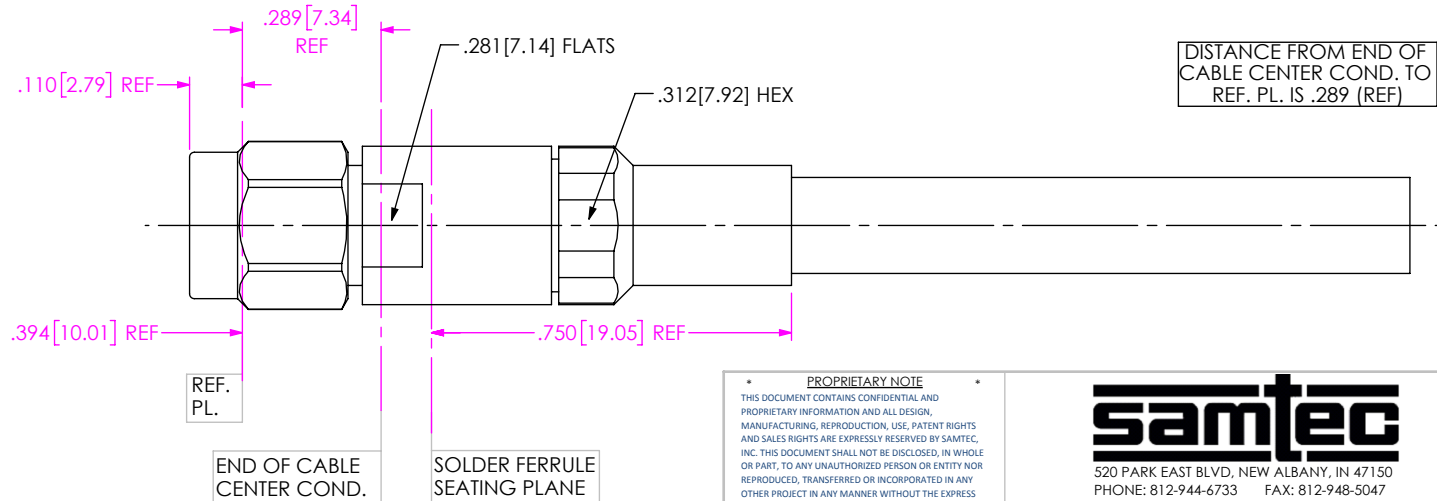
2B. SOLDER CABLE TO SOLDER FERRULE WITH DIELECTRIC FLUSH WITH FACE OF FERRULE.

2C. SLIDE DIELECTRIC STOP OVER CABLE CENTER CONDUCTOR AND SOLDER CONTACT FLUSH TO STOP TO DIMENSION SHOWN.

2D. SLIDE FORWARD INSULATOR ONTO CONTACT.



IN-PROCESS VIEW 2



3A. INSERT CABLE/CONTACT SUB-ASSEMBLY INTO CONNECTOR UNTIL SEATED AND TIGHTEN CLAMP NUT TO 25-35 IN-LBS.

IN-PROCESS VIEW 3

**PROPRIETARY NOTE**  
 THIS DOCUMENT CONTAINS CONFIDENTIAL AND PROPRIETARY INFORMATION AND ALL DESIGN, MANUFACTURING, REPRODUCTION, USE, PATENT RIGHTS AND SALES RIGHTS ARE EXPRESSLY RESERVED BY SAMTEC, INC. THIS DOCUMENT SHALL NOT BE DISCLOSED, IN WHOLE OR PART, TO ANY UNAUTHORIZED PERSON OR ENTITY NOR REPRODUCED, TRANSFERRED OR INCORPORATED IN ANY OTHER PROJECT IN ANY MANNER WITHOUT THE EXPRESS WRITTEN CONSENT OF SAMTEC, INC.



520 PARK EAST BLVD, NEW ALBANY, IN 47150  
 PHONE: 812-944-6733 FAX: 812-948-5047  
 e-Mail info@SAMTEC.com code 55322

DO NOT SCALE DRAWING

SHEET SCALE: 2.5:1

DESCRIPTION: SMA PLUG, SOLDER CLAMP FOR HARBOUR SB142 CABLE

DWG. NO. PRF01-P-C-EP-142A-SS

BY: JERRY SU 4/29/2019 SHEET 2 OF 2