

DO NOT SCALE FROM THIS PRINT

DESIGNED AND DIMENSIONED IN INCHES[MILLIMETERS]
ALL DIMENSIONS REFERENCE EXCEPT AS SHOWN

PRF01-P-C-EP-160-SS-1

SERIES
-01: SMA

GENDER
-P: PLUG

TYPE
-C: CABLE

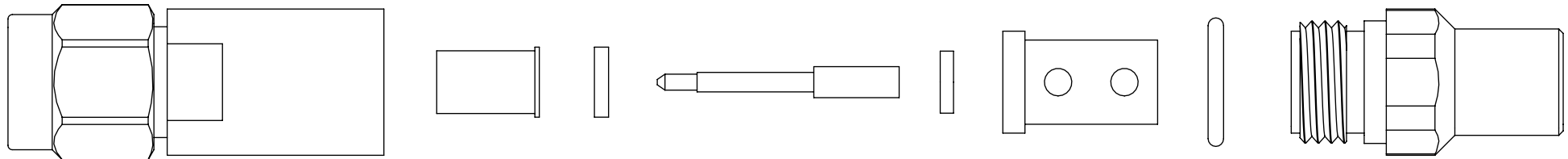
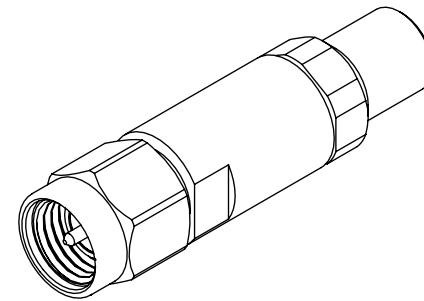
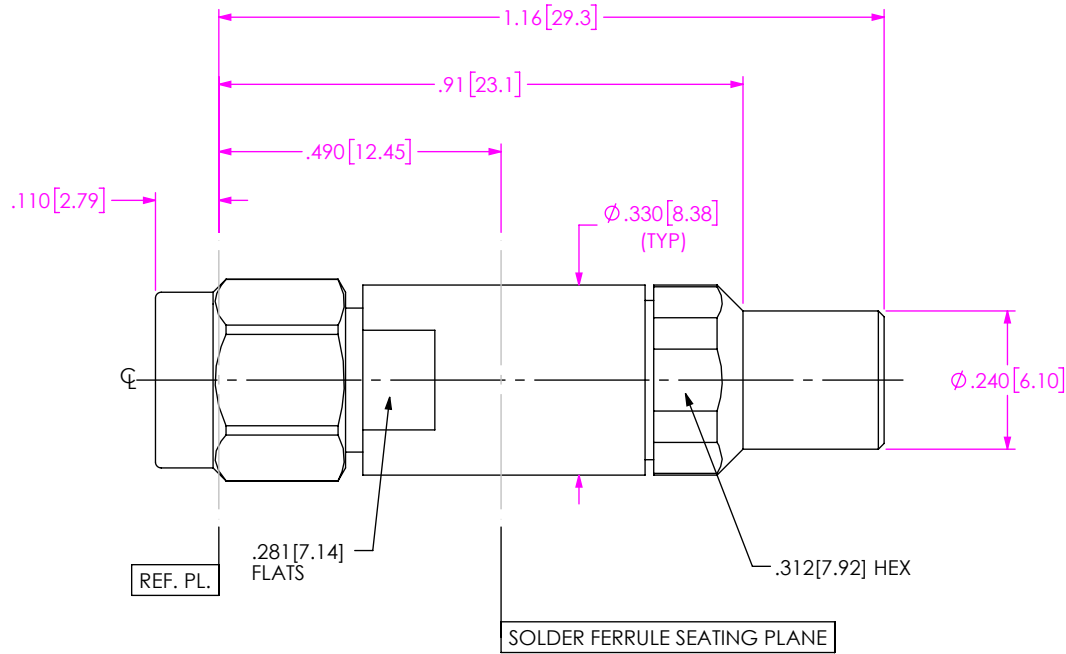
FINISH
-EP: 50µ" EXTRA HEAVY GOLD CENTER CONTACT, PASSIVATED OUTER CONTACT

OPTION
-1

TERMINATION
-S: SOLDER CLAMP

ORIENTATION
-S: STRAIGHT

CABLE TYPE
-160: SEMFLEX HP160



EXPLODED VIEW
NOT TO SCALE
(FOR CLARITY ONLY)

NOTES:

- MATERIAL:**
BODY, CLAMP NUT, COUPLING NUT: STAINLESS STEEL
CONTACT, LOCK RING: BERYLLIUM COPPER
SOLDER FERRULE: BRASS ALLOY
INSULATOR: PTFE
BEADS: PEI
O-RING, GASKET: SILICONE RUBBER
- FINISH:**
BODY, CLAMP NUT, COUPLING NUT: PASSIVATED
CONTACT: 50µ" MIN. GOLD OVER 50µ" MIN. NICKEL PLATE
SOLDER FERRULE: 10µ" MIN. GOLD OVER 50µ" MIN. NICKEL PLATE
- PCI P/N: 3404

PROPRIETARY NOTE
THIS DOCUMENT CONTAINS CONFIDENTIAL AND PROPRIETARY INFORMATION AND ALL DESIGN, MANUFACTURING, REPRODUCTION, USE, PATENT RIGHTS AND SALES RIGHTS ARE EXPRESSLY RESERVED BY SAMTEC, INC. THIS DOCUMENT SHALL NOT BE DISCLOSED, IN WHOLE OR PART, TO ANY UNAUTHORIZED PERSON OR ENTITY NOR REPRODUCED, TRANSFERRED OR INCORPORATED IN ANY OTHER PROJECT IN ANY MANNER WITHOUT THE EXPRESS WRITTEN CONSENT OF SAMTEC, INC.



520 PARK EAST BLVD. NEW ALBANY, IN 47150
PHONE: 812-944-6733 FAX: 812-948-5047
e-Mail: info@SAMTEC.com code 55322

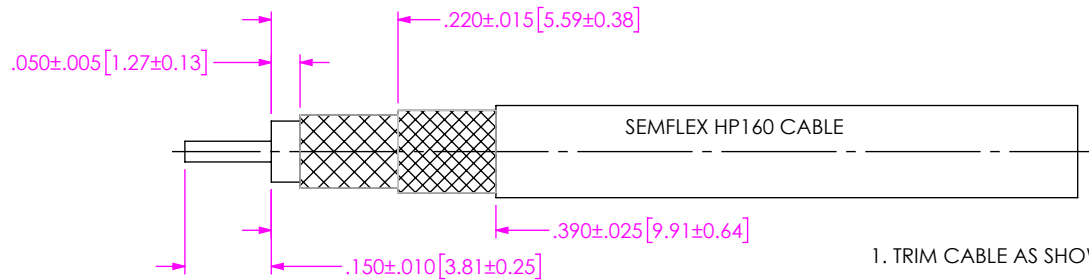
DO NOT SCALE DRAWING
SHEET SCALE: 3:1

DESCRIPTION: SMA PLUG, SOLDER CLAMP FOR SEMFLEX HP160 CABLE

DWG. NO. PRF01-P-C-EP-160-SS-1

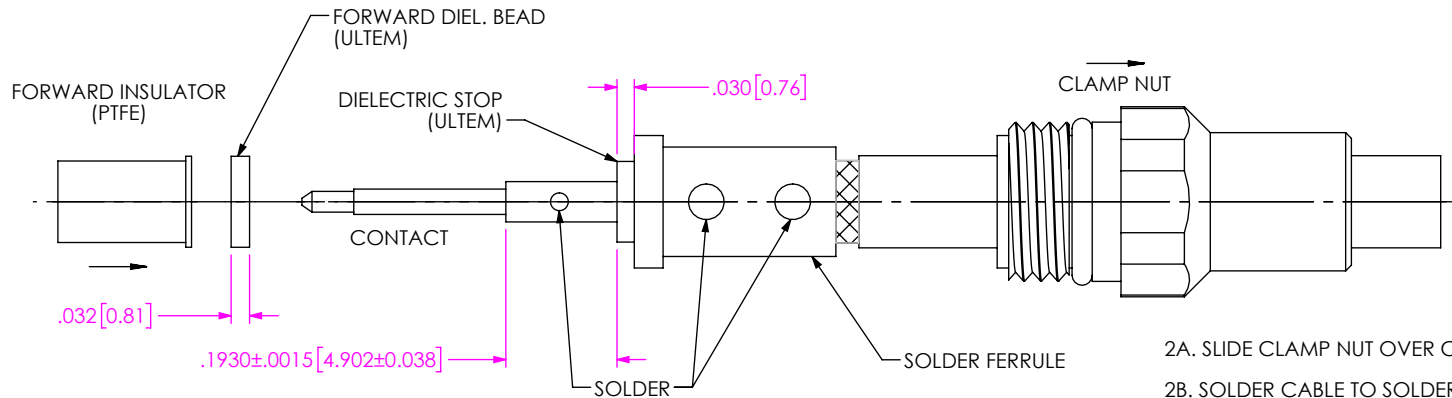
BY: SAMUEL C 05/08/2019 SHEET 1 OF 2

CABLE APPLICATION VIEWS



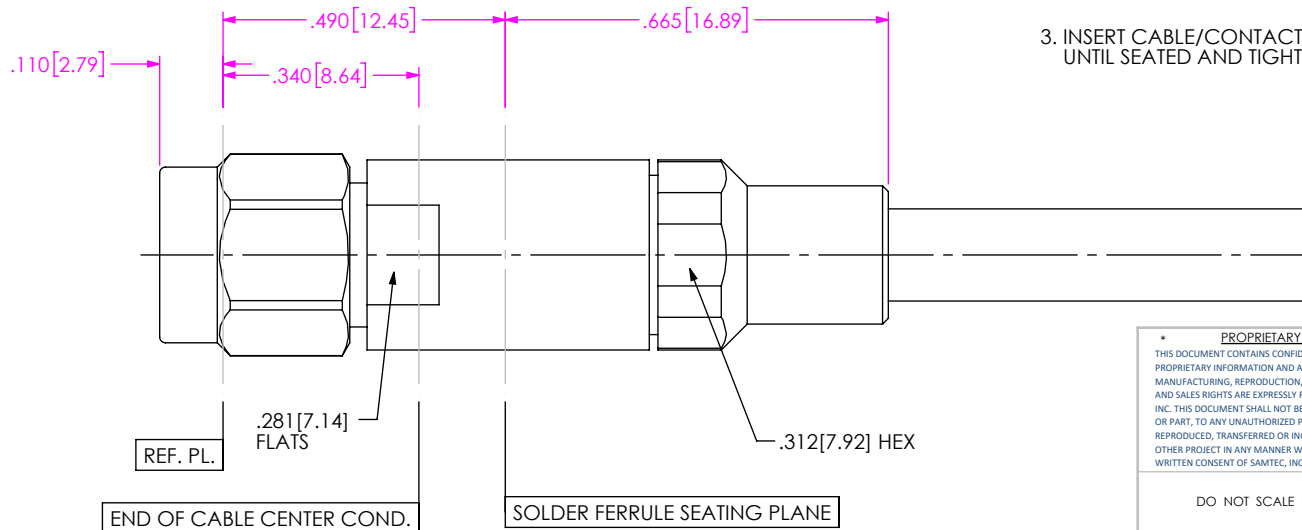
IN-PROCESS VIEW 1

1. TRIM CABLE AS SHOWN.



IN-PROCESS VIEW 2

- 2A. SLIDE CLAMP NUT OVER CABLE AS SHOWN.
- 2B. SOLDER CABLE TO SOLDER FERRULE WITH DIELECTRIC FLUSH WITH FACE OF FERRULE.
- 2C. SLIDE DIELECTRIC STOP (Ø.140 OD) OVER CABLE CENTER CONDUCTOR AND SOLDER CONTACT FLUSH TO STOP TO DIMENSION SHOWN.
- 2D. SLIDE FORWARD INSULATOR & DIELECTRIC BEAD (Ø.158 OD) ONTO CONTACT.



IN-PROCESS VIEW 3

3. INSERT CABLE/CONTACT SUB-ASSEMBLY INTO CONNECTOR UNTIL SEATED AND TIGHTEN CLAMP NUT TO 25-35 IN. LBS.

PROPRIETARY NOTE
 THIS DOCUMENT CONTAINS CONFIDENTIAL AND PROPRIETARY INFORMATION AND ALL DESIGN, MANUFACTURING, REPRODUCTION, USE, PATENT RIGHTS AND SALES RIGHTS ARE EXPRESSLY RESERVED BY SAMTEC, INC. THIS DOCUMENT SHALL NOT BE DISCLOSED, IN WHOLE OR PART, TO ANY UNAUTHORIZED PERSON OR ENTITY NOR REPRODUCED, TRANSFERRED OR INCORPORATED IN ANY OTHER PROJECT IN ANY MANNER WITHOUT THE EXPRESS WRITTEN CONSENT OF SAMTEC, INC.



520 PARK EAST BLVD, NEW ALBANY, IN 47150
 PHONE: 812-944-6733 FAX: 812-948-5047
 e-Mail info@SAMTEC.com code 55322

DO NOT SCALE DRAWING

SHEET SCALE: 3:1

DESCRIPTION: SMA PLUG, SOLDER CLAMP FOR SEMFLEX HP160 CABLE

DWG. NO. PRF01-P-C-EP-160-SS-1

BY: SAMUEL C 05/08/2019 SHEET 2 OF 2