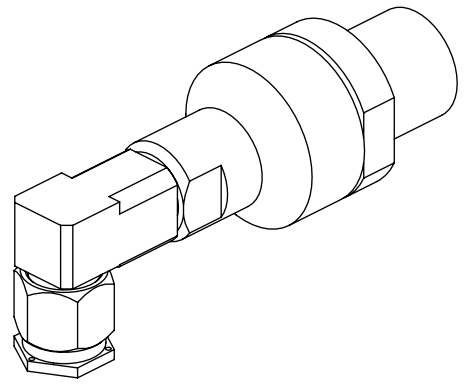


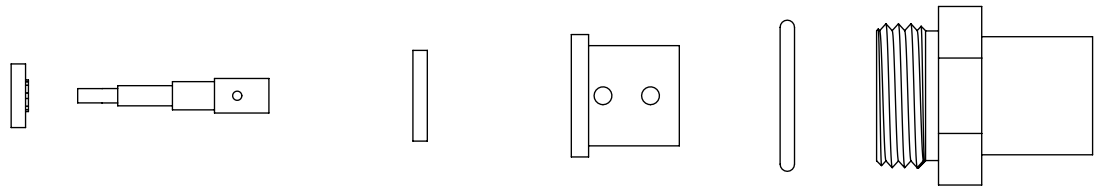
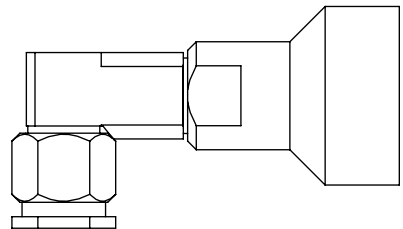
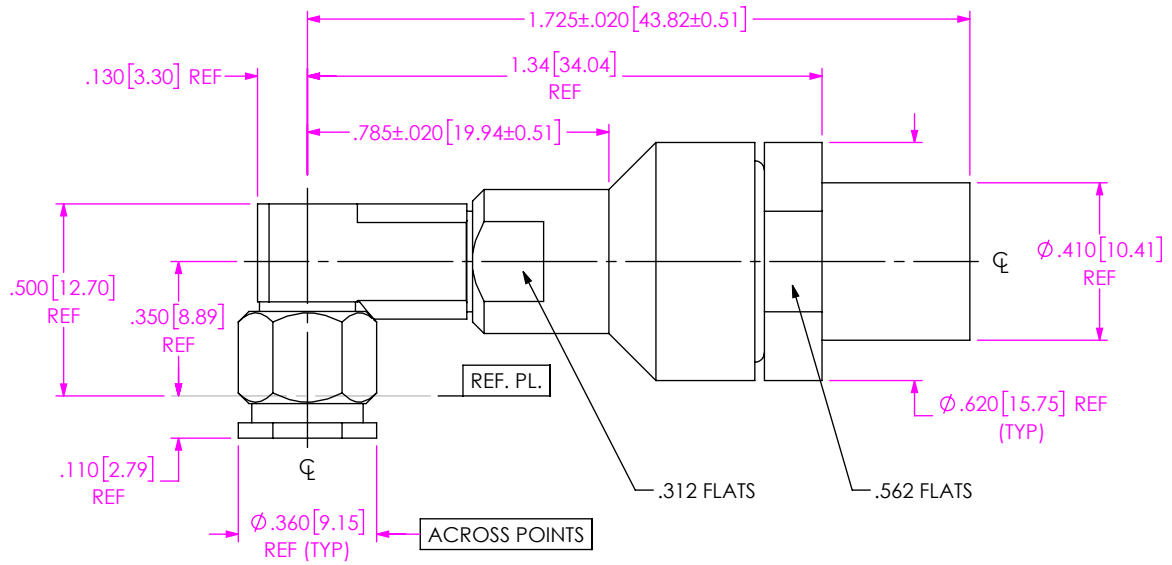
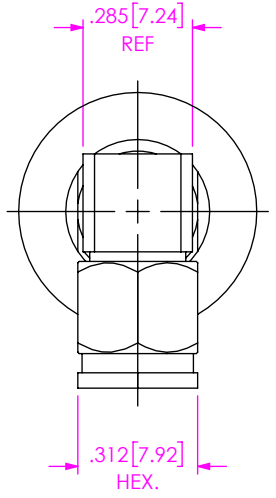
DO NOT SCALE FROM THIS PRINT



DESIGNED & DIMENSIONED IN INCHES[MILLIMETERS]

PRF01-P-C-EP-270A-RS

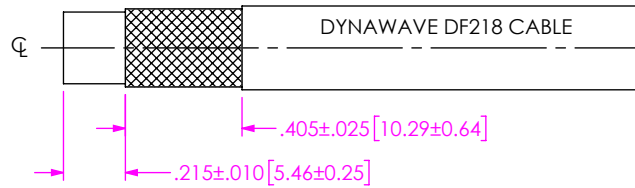
SERIES -01: SMA  
 GENDER -P: PLUG  
 TYPE -C: CABLE  
 FINISH -EP: 50µ" EXTRA HEAVY GOLD CENTER CONTACT, PASSIVATED OUTER CONTACT  
 TERMINATION -S: SOLDER CLAMP  
 ORIENTATION -R: RIGHT ANGLE  
 CABLE TYPE -270A: DYNAWAVE DF218



EXPLODED VIEW  
 NOT TO SCALE  
 (FOR CLARITY ONLY)

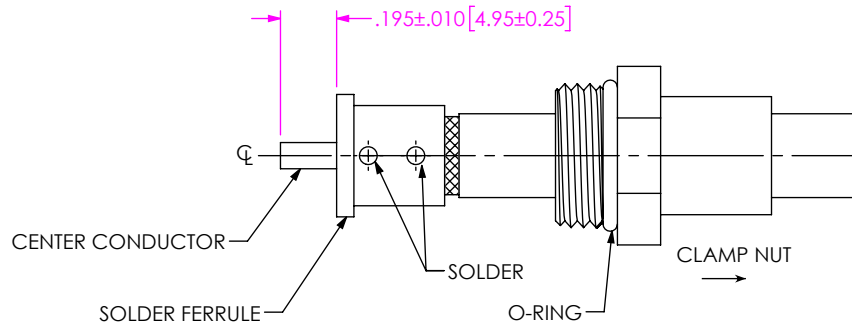
- NOTES:
- MATERIAL:  
 BODIES, COUPLING & CLAMP NUTS: STAINLESS STEEL.  
 CONTACT & LOCK RING: BERYLLIUM COPPER.  
 SOLDER FERRULE: BRASS.  
 GASKET & O-RING: SILICONE RUBBER.  
 INSULATORS: PTFE.  
 DIELECTRIC BEADS: ULTEM.
  - FINISH:  
 BODIES, COUPLING & CLAMP NUTS: PASSIVATED.  
 CONTACT & SOLDER FERRULE: GOLD OVER NICKEL PLATE,  
 50 µIN MIN GOLD OVER 50 µIN MIN NICKEL.
  - PCI P/N: 3535.

UNLESS OTHERWISE SPECIFIED, DIMENSIONS ARE IN INCHES. TOLERANCES ARE: DECIMALS                      ANGLES .XX: ±.01 [0.3] .XXX: ±.005 [0.13] .XXXX: ±.0005 [0.013]	* PROPRIETARY NOTE * THIS DOCUMENT CONTAINS CONFIDENTIAL AND PROPRIETARY INFORMATION AND ALL DESIGN, MANUFACTURING, REPRODUCTION, USE, PATENT RIGHTS AND SALES RIGHTS ARE EXPRESSLY RESERVED BY SAMTEC, INC. THIS DOCUMENT SHALL NOT BE DISCLOSED, IN WHOLE OR PART, TO ANY UNAUTHORIZED PERSON OR ENTITY NOR REPRODUCED, TRANSFERRED OR INCORPORATED IN ANY OTHER PROJECT IN ANY MANNER WITHOUT THE EXPRESS WRITTEN CONSENT OF SAMTEC, INC.	
		520 PARK EAST BLVD., NEW ALBANY, IN 47150 PHONE: 812-944-6733      FAX: 812-948-5047 e-Mail: info@SAMTEC.com      code 55322
DO NOT SCALE DRAWING                      SHEET SCALE: 1.5:1		DESCRIPTION: SMA RA PLUG, SOLDER CLAMP FOR DYNAWAVE DF218 CABLE
		DWG. NO.      PRF01-P-C-EP-270A-RS
		BY: WILLY Y                      12/29/2021      SHEET 1 OF 3



1. TRIM CABLE AS SHOWN.

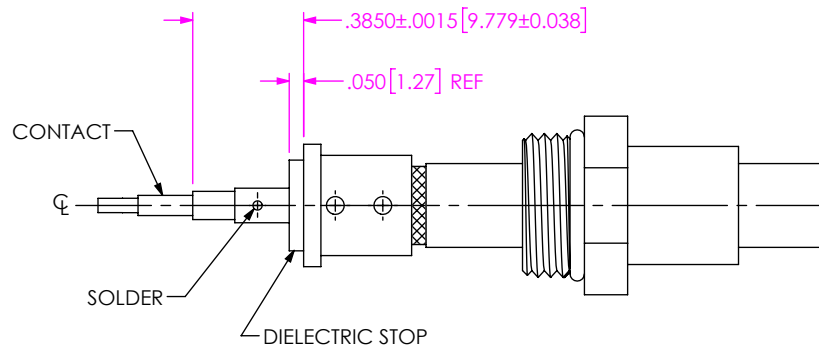
IN-PROCESS 1



2A. INSERT CABLE INTO SOLDER FERRULE UNTIL BRAIDS SEAT IN FERRULE. THEN SOLDER BOTH CABLE BRAIDS TO FERRULE WHERE SHOWN.

2B. TRIM CABLE DIELECTRIC FLUSH WITH FACE OF FERRULE.

IN-PROCESS 2



3A. SLIDE DIELECTRIC STOP ( Ø.315[8.00] OD) ONTO CABLE CENTER CONDUCTOR AGAINST FACE OF SOLDER FERRULE.

3B. SOLDER CONTACT FLUSH TO DIELECTRIC STOP TO DIMENSION SHOWN.

IN-PROCESS 3

**PROPRIETARY NOTE**  
 THIS DOCUMENT CONTAINS CONFIDENTIAL AND PROPRIETARY INFORMATION AND ALL DESIGN, MANUFACTURING, REPRODUCTION, USE, PATENT RIGHTS AND SALES RIGHTS ARE EXPRESSLY RESERVED BY SAMTEC, INC. THIS DOCUMENT SHALL NOT BE DISCLOSED, IN WHOLE OR PART, TO ANY UNAUTHORIZED PERSON OR ENTITY NOR REPRODUCED, TRANSFERRED OR INCORPORATED IN ANY OTHER PROJECT IN ANY MANNER WITHOUT THE EXPRESS WRITTEN CONSENT OF SAMTEC, INC.



520 PARK EAST BLVD, NEW ALBANY, IN 47150  
 PHONE: 812-944-6733 FAX: 812-948-5047  
 e-Mail info@SAMTEC.com code 55322

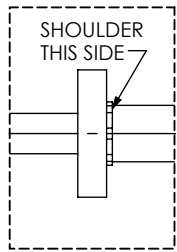
DO NOT SCALE DRAWING

SHEET SCALE: 1.5:1

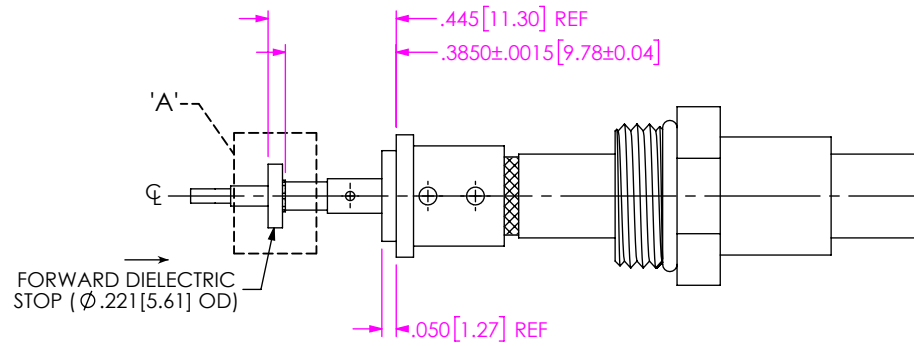
DESCRIPTION: SMA RA PLUG, SOLDER CLAMP FOR DYNAWAVE DF218 CABLE

DWG. NO. PRF01-P-C-EP-270A-RS

BY: WILLY Y 12/29/2021 SHEET 2 OF 3

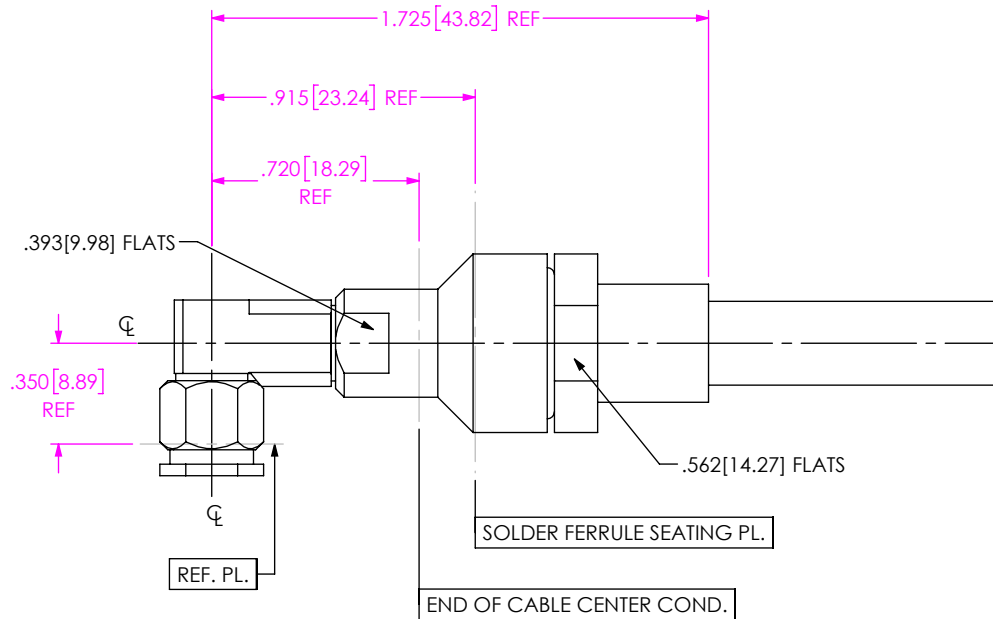


DETAIL 'A'  
SCALE 3 : 1



4. SLIDE FORWARD DIELECTRIC STOP ONTO CONTACT. AGAINST SHOULDER AS SHOWN.

IN-PROCESS 4



5. INSERT CABLE/CONTACT SUB-ASSEMBLY INTO CONNECTOR UNTIL SEATED AND TIGHTEN CLAMP NUT TO 35-45 IN.-LBS.

IN-PROCESS 5

**PROPRIETARY NOTE**  
THIS DOCUMENT CONTAINS CONFIDENTIAL AND PROPRIETARY INFORMATION AND ALL DESIGN, MANUFACTURING, REPRODUCTION, USE, PATENT RIGHTS AND SALES RIGHTS ARE EXPRESSLY RESERVED BY SAMTEC, INC. THIS DOCUMENT SHALL NOT BE DISCLOSED, IN WHOLE OR PART, TO ANY UNAUTHORIZED PERSON OR ENTITY NOR REPRODUCED, TRANSFERRED OR INCORPORATED IN ANY OTHER PROJECT IN ANY MANNER WITHOUT THE EXPRESS WRITTEN CONSENT OF SAMTEC, INC.



520 PARK EAST BLVD, NEW ALBANY, IN 47150  
PHONE: 812-944-6733 FAX: 812-948-5047  
e-Mail info@SAMTEC.com code 55322

DO NOT SCALE DRAWING

SHEET SCALE: 1.5:1

DESCRIPTION: SMA RA PLUG, SOLDER CLAMP FOR DYNAWAVE DF218 CABLE

DWG. NO. PRF01-P-C-EP-270A-RS

BY: WILLY Y 12/29/2021 SHEET 3 OF 3