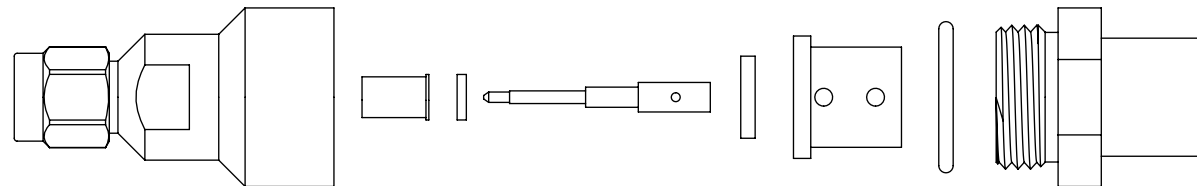
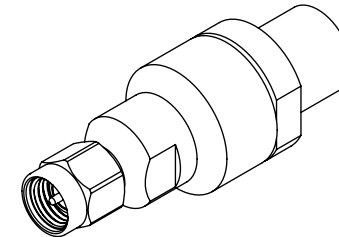
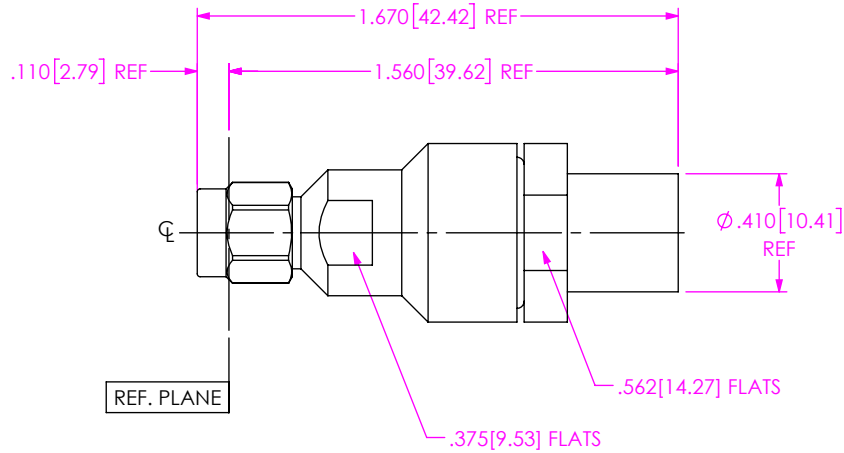


DO NOT SCALE FROM THIS PRINT

DESIGNED & DIMENSIONED IN INCHES[MILLIMETERS]

PRF01-P-C-EP-305-SS

SERIES -01: SMA
 GENDER -P: PLUG
 TYPE -C: CABLE
 FINISH -EP: 50µ" EXTRA HEAVY GOLD CENTER CONTACT, PASSIVATED OUTER CONTACT
 TERMINATION -S: SOLDER CLAMP
 ORIENTATION -S: STRAIGHT
 CABLE TYPE -305: SEMFLEX HP305



EXPLODED VIEW
 NOT TO SCALE
 (FOR CLARITY ONLY)

NOTES:

- MATERIAL:
 BODY, COUPLING NUT & CLAMP NUT: STAINLESS STEEL.
 PIN & LOCK RING: BERYLLIUM COPPER.
 SOLDER FERRULE: BRASS.
 GASKET & O-RING: SILICONE RUBBER.
 INSULATOR: PTFE.
 BEADS: ULTEM 1000.
- FINISH:
 BODY, COUPLING NUT & CLAMP NUT: PASSIVATED.
 PIN & SOLDER FERRULE: GOLD OVER NICKEL PLATE,
 50 µIN MIN GOLD OVER 50 µIN MIN NICKEL.
- PCI P/N: 3506.

UNLESS OTHERWISE SPECIFIED,
 DIMENSIONS ARE IN INCHES.
 TOLERANCES ARE:
 DECIMALS .XX: ±.01 [0.3]
 .XXX: ±.005 [0.13]
 .XXXX: ±.0005 [0.013]

ANGLES 1°

PROPRIETARY NOTE
 THIS DOCUMENT CONTAINS CONFIDENTIAL AND PROPRIETARY INFORMATION AND ALL DESIGN, MANUFACTURING, REPRODUCTION, USE, PATENT RIGHTS AND SALES RIGHTS ARE EXPRESSLY RESERVED BY SAMTEC, INC. THIS DOCUMENT SHALL NOT BE DISCLOSED, IN WHOLE OR PART, TO ANY UNAUTHORIZED PERSON OR ENTITY NOR REPRODUCED, TRANSFERRED OR INCORPORATED IN ANY OTHER PROJECT IN ANY MANNER WITHOUT THE EXPRESS WRITTEN CONSENT OF SAMTEC, INC.



520 PARK EAST BLVD, NEW ALBANY, IN 47150
 PHONE: 812-944-6733 FAX: 812-948-5047
 e-Mail info@SAMTEC.com code 55322

DO NOT SCALE DRAWING

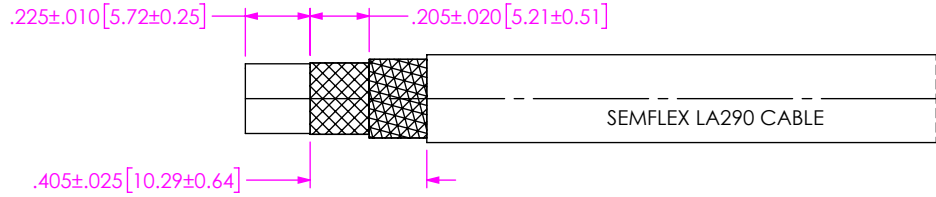
SHEET SCALE: 3:2

DESCRIPTION: SMA PLUG, SOLDER CLAMP FOR SEMFLEX HP305 CABLE

DWG. NO. PRF01-P-C-EP-305-SS

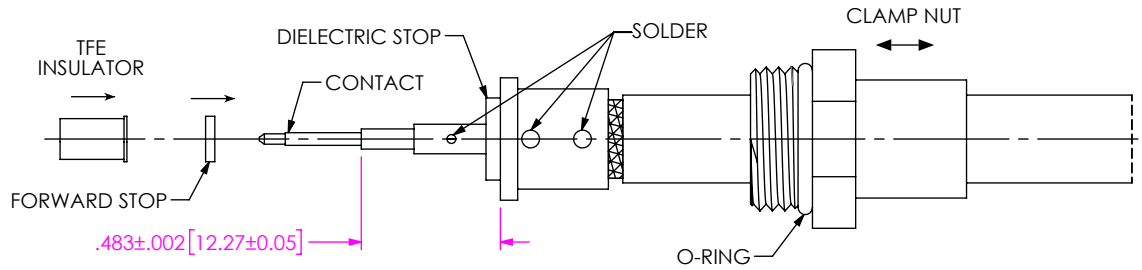
BY: CANDY W 04/28/2019 SHEET 1 OF 2

1. TRIM CABLE AS SHOWN.



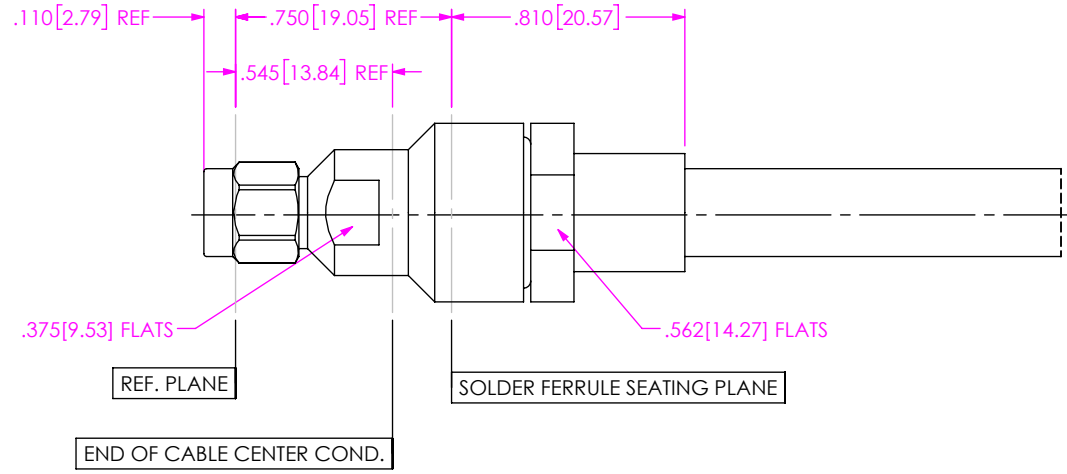
IN-PROCESS 1

- 2A. INSERT CABLE INTO SOLDER FERRULE UNTIL INNER BRAID SEATS IN FERRULE. THEN SOLDER BOTH CABLE BRAIDS WHERE SHOWN.
- 2B. TRIM CABLE DIELECTRIC FLUSH WITH FACE OF FERRULE.
- 2C. SLIDE DIELECTRIC STOP OVER CABLE CENTER CONDUCTOR AND SOLDER CONTACT FLUSH AGAINST STOP TO DIMENSION SHOWN. SLIDE FORWARD STOP & INSULATOR ONTO CONTACT AS SHOWN.



IN-PROCESS 2

3. INSERT CABLE/CONTACT SUB-ASSEMBLY INTO CONNECTOR UNTIL SEATED AND TIGHTEN CLAMP NUT TO 35-45 IN-LBS.



IN-PROCESS 3

| | | |
|---|---|---|
| <p>DO NOT SCALE DRAWING</p> <p>SHEET SCALE: 3:2</p> | <p>PROPRIETARY NOTE</p> <p>THIS DOCUMENT CONTAINS CONFIDENTIAL AND PROPRIETARY INFORMATION AND ALL DESIGN, MANUFACTURING, REPRODUCTION, USE, PATENT RIGHTS AND SALES RIGHTS ARE EXPRESSLY RESERVED BY SAMTEC, INC. THIS DOCUMENT SHALL NOT BE DISCLOSED, IN WHOLE OR PART, TO ANY UNAUTHORIZED PERSON OR ENTITY NOR REPRODUCED, TRANSFERRED OR INCORPORATED IN ANY OTHER PROJECT IN ANY MANNER WITHOUT THE EXPRESS WRITTEN CONSENT OF SAMTEC, INC.</p> | <p>520 PARK EAST BLVD, NEW ALBANY, IN 47150 PHONE: 812-944-6733 FAX: 812-948-5047 e-Mail info@SAMTEC.com code 55322</p> |
| | <p>DESCRIPTION: SMA PLUG, SOLDER CLAMP FOR SEMFLEX HP305 CABLE</p> | |
| | <p>DWG. NO. PRF01-P-C-EP-305-SS</p> | |
| <p>BY: CANDY W 04/28/2019 SHEET 2 OF 2</p> | | |