

DO NOT SCALE FROM THIS PRINT

DESIGNED & DIMENSIONED IN INCHES[MILLIMETERS]

PRF01-P-C-EP-335A-SS

SERIES

-01: SMA

GENDER

-P: PLUG

TYPE

-C: CABLE

FINISH

-EP: 50µ" EXTRA HEAVY GOLD CENTER CONTACT, PASSIVATED OUTER CONTACT

TERMINATION

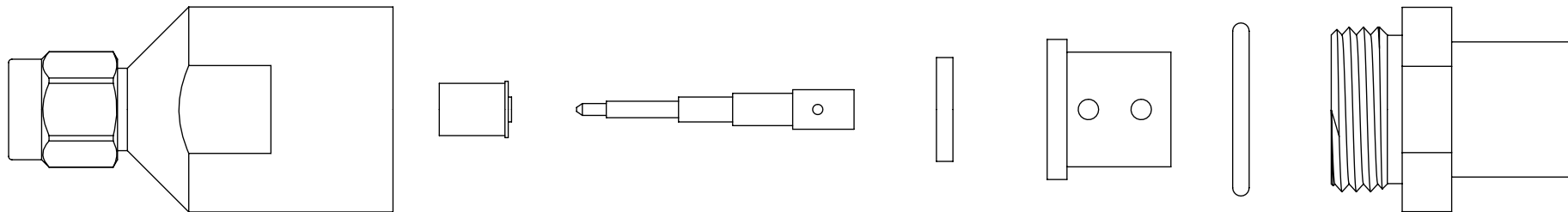
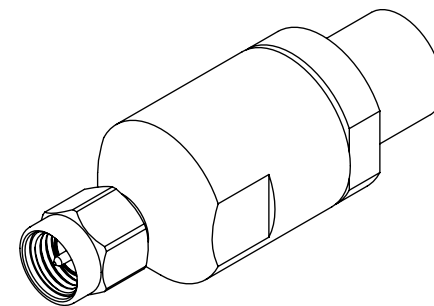
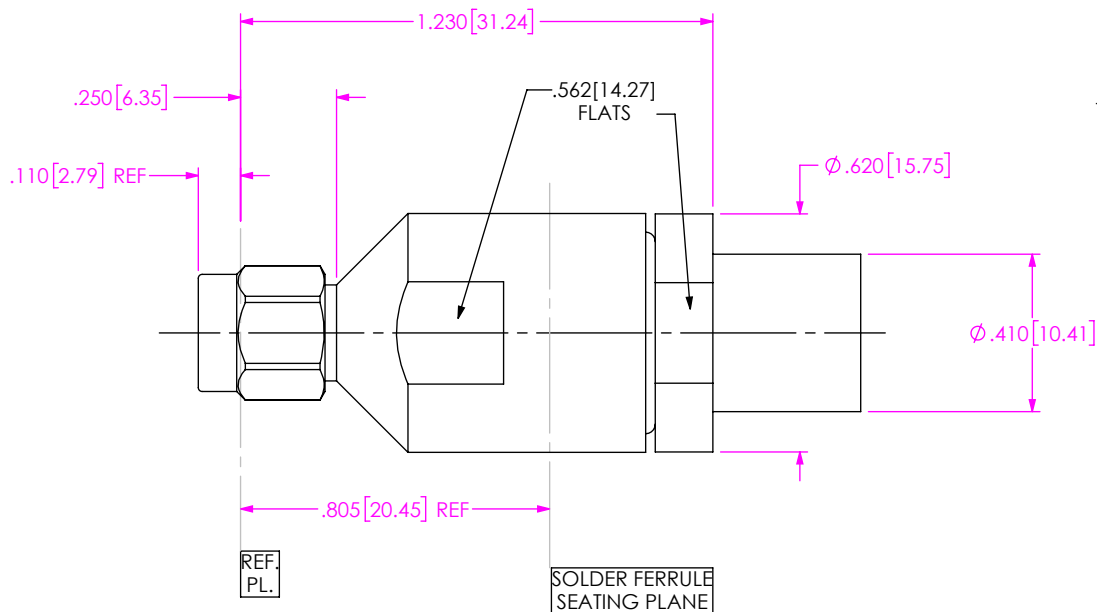
-S: SOLDER CLAMP

ORIENTATION

-S: STRAIGHT

CABLE TYPE

-335A: HARBOUR LL335I



EXPLODED VIEW
NOT TO SCALE
(FOR CLARITY ONLY)

NOTES:

1. MATERIAL:

BODY, CLAMP NUT, COUPLING NUT: STAINLESS STEEL
CONTACT, LOCK RING: BERYLLIUM COPPER
SOLDER FERRULE: BRASS ALLOY
INSULATOR, BEAD: PTFE
O-RING, GASKET: SILICONE RUBBER

2. FINISH:

BODY, CLAMP NUT, COUPLING NUT: PASSIVATED
CONTACT: 50µ" MIN. GOLD OVER 50µ" MIN. NICKEL PLATE
SOLDER FERRULE: 10µ" MIN. GOLD OVER 50µ" MIN. NICKEL PLATE

3. PCI P/N: 3556

UNLESS OTHERWISE SPECIFIED,
DIMENSIONS ARE IN INCHES.
TOLERANCES ARE:
DECIMALS ANGLES
.XX: ±.01 [0.3] 1°
.XXX: ±.005 [0.13]
.XXXX: ±.0005 [0.013]

PROPRIETARY NOTE
THIS DOCUMENT CONTAINS CONFIDENTIAL AND PROPRIETARY INFORMATION AND ALL DESIGN, MANUFACTURING, REPRODUCTION, USE, PATENT RIGHTS AND SALES RIGHTS ARE EXPRESSLY RESERVED BY SAMTEC, INC. THIS DOCUMENT SHALL NOT BE DISCLOSED, IN WHOLE OR PART, TO ANY UNAUTHORIZED PERSON OR ENTITY NOR REPRODUCED, TRANSFERRED OR INCORPORATED IN ANY OTHER PROJECT IN ANY MANNER WITHOUT THE EXPRESS WRITTEN CONSENT OF SAMTEC, INC.



520 PARK EAST BLVD, NEW ALBANY, IN 47150
PHONE: 812-944-6733 FAX: 812-948-5047
e-Mail info@SAMTEC.com code 55322

DO NOT SCALE DRAWING

SHEET SCALE: 3:1

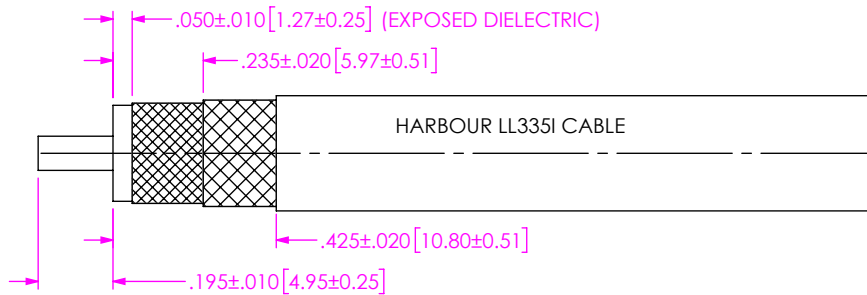
DESCRIPTION: SMA PLUG, CLAMP FOR HARBOUR LL335I CABLE

DWG. NO. PRF01-P-C-EP-335A-SS

BY: CHRISTIAN S. 05/02/2019 SHEET 1 OF 2

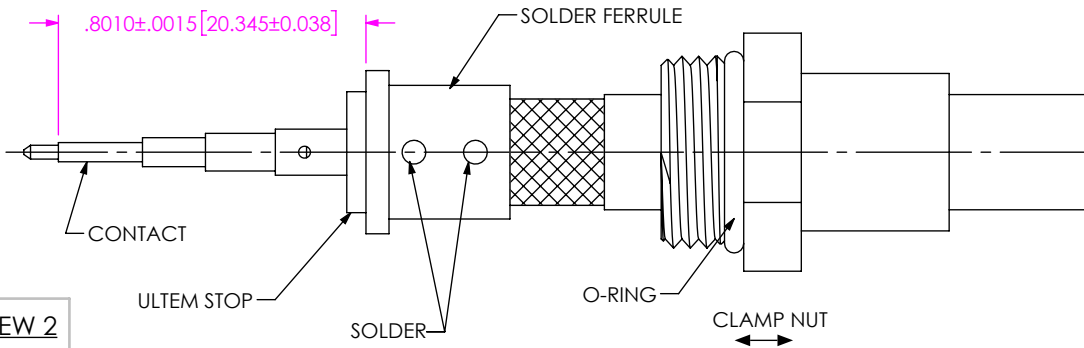
CABLE APPLICATION VIEWS

IN-PROCESS VIEW 1

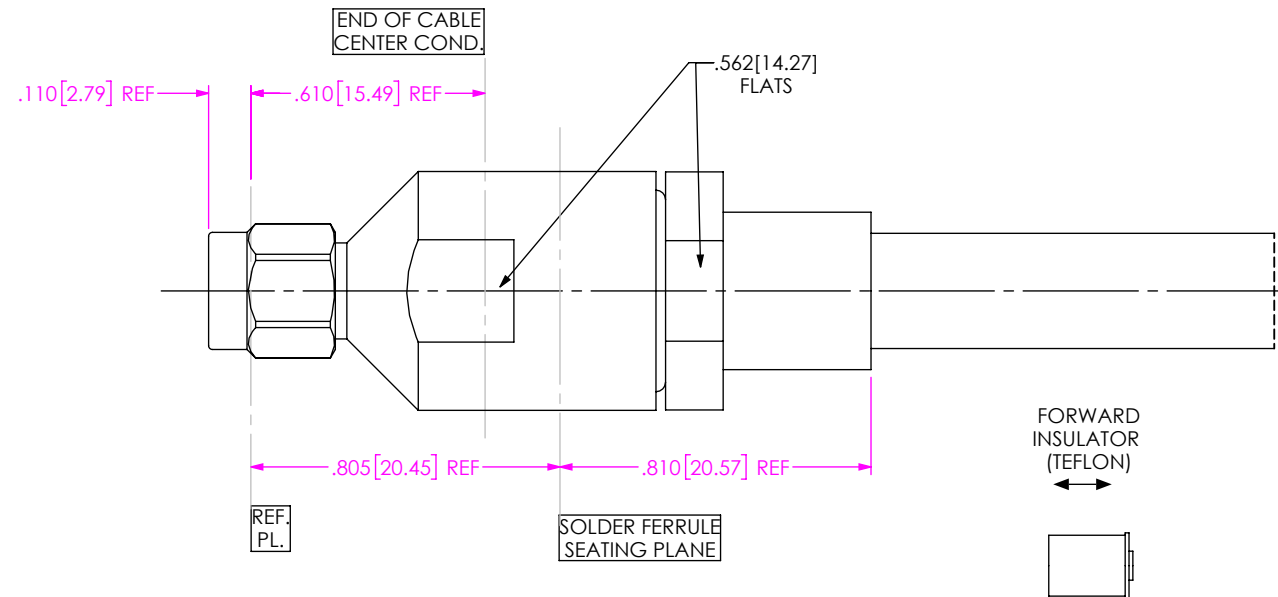


1A. TRIM CABLE AS SHOWN

IN-PROCESS VIEW 2



- 2A. SLIDE CLAMP NUT OVER CABLE AS SHOWN.
- 2B. INSERT CABLE INTO SOLDER FERRULE UNTIL CABLE DIELECTRIC IS FLUSH WITH FACE OF FERRULE. THEN SOLDER BOTH CABLE BRAIDS WHERE SHOWN.
- 2C. SLIDE DIELECTRIC STOP OVER CABLE CENTER CONDUCTOR AND SOLDER CONTACT FLUSH AGAINST STOP TO DIMENSION SHOWN.



- 3A. INSERT FORWARD INSULATOR INTO CONNECTOR IN ORIENTATION SHOWN
- 3B. INSERT CABLE/CONTACT SUB ASSEMBLY INTO CONNECTOR UNTIL SEATED AND TIGHTEN CLAMP NUT TO 35-45 IN/LBS

IN-PROCESS VIEW 3

PROPRIETARY NOTE
 THIS DOCUMENT CONTAINS CONFIDENTIAL AND PROPRIETARY INFORMATION AND ALL DESIGN, MANUFACTURING, REPRODUCTION, USE, PATENT RIGHTS AND SALES RIGHTS ARE EXPRESSLY RESERVED BY SAMTEC, INC. THIS DOCUMENT SHALL NOT BE DISCLOSED, IN WHOLE OR PART, TO ANY UNAUTHORIZED PERSON OR ENTITY NOR REPRODUCED, TRANSFERRED OR INCORPORATED IN ANY OTHER PROJECT IN ANY MANNER WITHOUT THE EXPRESS WRITTEN CONSENT OF SAMTEC, INC.



520 PARK EAST BLVD, NEW ALBANY, IN 47150
 PHONE: 812-944-6733 FAX: 812-948-5047
 e-Mail info@SAMTEC.com code 55322

DO NOT SCALE DRAWING

SHEET SCALE: 2:1

DESCRIPTION: SMA PLUG, CLAMP FOR HARBOUR LL335I CABLE

DWG. NO. PRF01-P-C-EP-335A-SS

BY: CHRISTIAN S05/02/2019 SHEET 2 OF 2