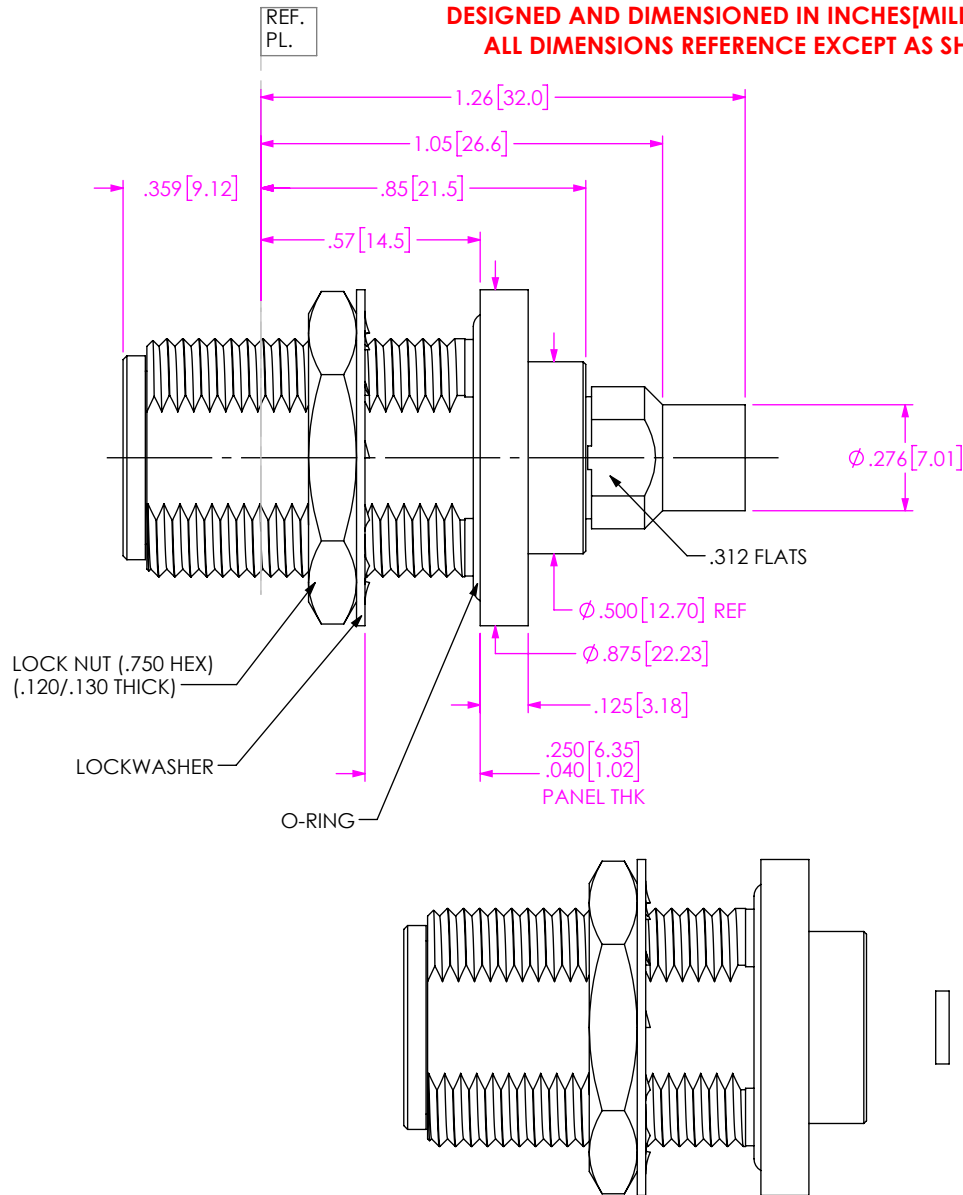


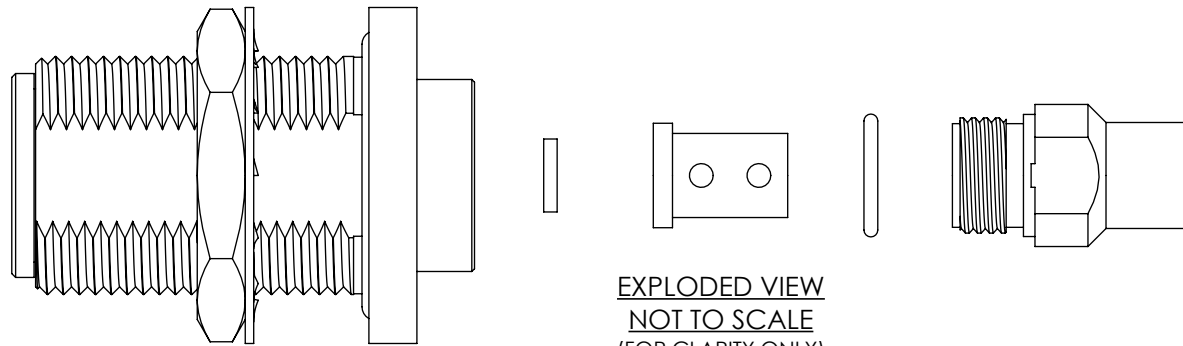
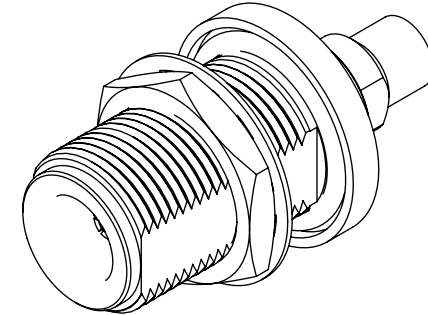
DO NOT SCALE FROM THIS PRINT

**DESIGNED AND DIMENSIONED IN INCHES[MILLIMETERS]  
ALL DIMENSIONS REFERENCE EXCEPT AS SHOWN**



**PRF06-J-C-EP-142-BS**

SERIES -06: NTPE  
GENDER -J: JACK  
TYPE -C: CABLE  
FINISH -EP: 50µ" EXTRA HEAVY GOLD CENTER CONTACT, PASSIVATED  
TERMINATION -S: SOLDER CLAMP  
ORIENTATION -B: BULKHEAD  
CABLE TYPE -142: HARBOUR LL142



NOTES:

- MATERIAL:**  
BODY, BUSHING, CLAMP NUT, LOCK WASHER, JAM NUT: STAINLESS STEEL  
CONTACT: BERYLLIUM COPPER  
SOLDER FERRULE: BRASS ALLOY  
BEADS: PEI  
O-RINGS: SILICONE RUBBER
- FINISH:**  
BODY, BUSHING, CLAMP NUT, LOCK WASHER, JAM NUT: PASSIVATED  
CONTACT: 50µ" MIN. GOLD OVER 50µ" MIN. NICKEL PLATE  
SOLDER FERRULE: 10µ" MIN. GOLD OVER 50µ" MIN. NICKEL PLATE
- PCI P/N: 3282

**PROPRIETARY NOTE**  
THIS DOCUMENT CONTAINS CONFIDENTIAL AND PROPRIETARY INFORMATION AND ALL DESIGN, MANUFACTURING, REPRODUCTION, USE, PATENT RIGHTS AND SALES RIGHTS ARE EXPRESSLY RESERVED BY SAMTEC, INC. THIS DOCUMENT SHALL NOT BE DISCLOSED, IN WHOLE OR PART, TO ANY UNAUTHORIZED PERSON OR ENTITY NOR REPRODUCED, TRANSFERRED OR INCORPORATED IN ANY OTHER PROJECT IN ANY MANNER WITHOUT THE EXPRESS WRITTEN CONSENT OF SAMTEC, INC.



520 PARK EAST BLVD. NEW ALBANY, IN 47150  
PHONE: 812-944-6733 FAX: 812-948-5047  
e-Mail: info@SAMTEC.com code 55322

DO NOT SCALE DRAWING  
SHEET SCALE: 2:1

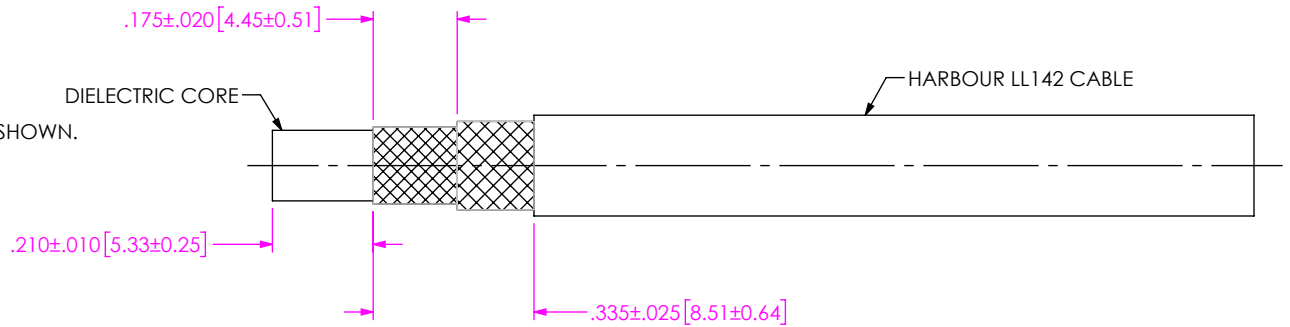
DESCRIPTION: TYPE N BULKHEAD JACK. SOLDER CLAMP FOR HARBOUR LL142 CABLE

DWG. NO. PRF06-J-C-EP-142-BS

BY: EVE L 05/18/2019 SHEET 1 OF 3

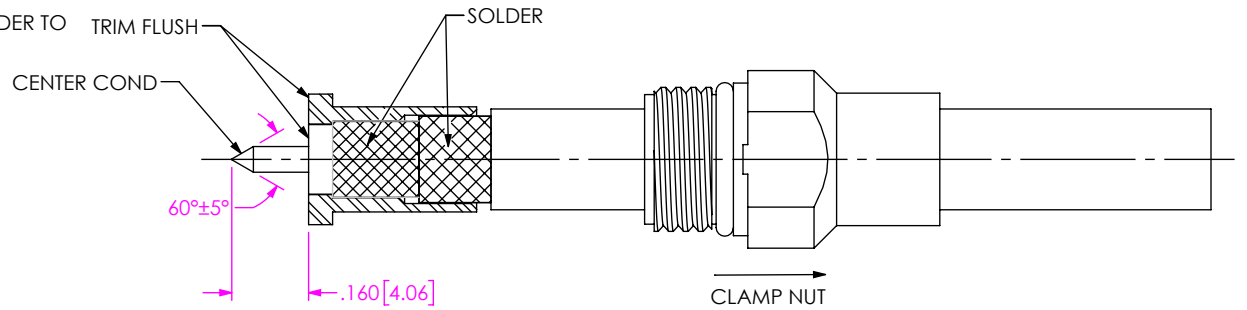
# CABLE APPLICATION VIEWS

1A. TRIM CABLE TO EXPOSE DIELECTRIC CORE AND BRAIDS AS SHOWN.



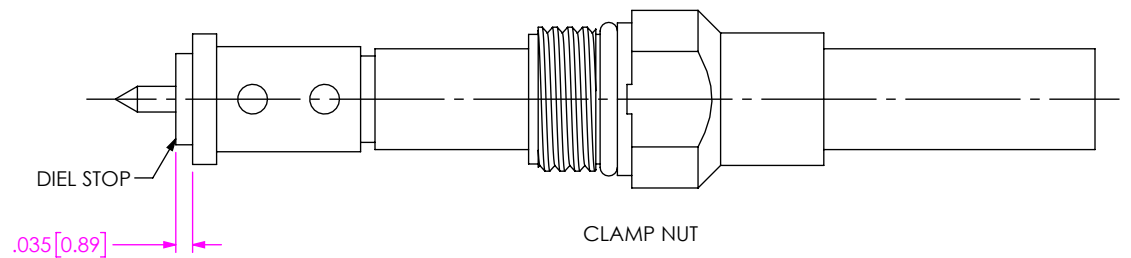
IN-PROCESS VIEW 1

2A. SLIDE CLAMP NUT OVER CABLE AS SHOWN.  
 2B. INSERT CABLE INTO FERRULE UNTIL INNER BRAID SEATS AND SOLDER TO FERRULE WHERE SHOWN.  
 2C. TRIM DIELECTRIC CORE FLUSH WITH FACE OF SOLDER FERRULE.  
 2D. POINT CENTER CONDUCTOR AS SHOWN.



IN-PROCESS VIEW 2

3A. SLIDE DIELECTRIC STOP ONTO CABLE CENTER CONDUCTOR FLUSH WITH SOLDER FERRULE FACE.



IN-PROCESS VIEW 3

**PROPRIETARY NOTE**  
 THIS DOCUMENT CONTAINS CONFIDENTIAL AND PROPRIETARY INFORMATION AND ALL DESIGN, MANUFACTURING, REPRODUCTION, USE, PATENT RIGHTS AND SALES RIGHTS ARE EXPRESSLY RESERVED BY SAMTEC, INC. THIS DOCUMENT SHALL NOT BE DISCLOSED, IN WHOLE OR PART, TO ANY UNAUTHORIZED PERSON OR ENTITY NOR REPRODUCED, TRANSFERRED OR INCORPORATED IN ANY OTHER PROJECT IN ANY MANNER WITHOUT THE EXPRESS WRITTEN CONSENT OF SAMTEC, INC.



520 PARK EAST BLVD, NEW ALBANY, IN 47150  
 PHONE: 812-944-6733 FAX: 812-948-5047  
 e-Mail info@SAMTEC.com code 55322

DO NOT SCALE DRAWING

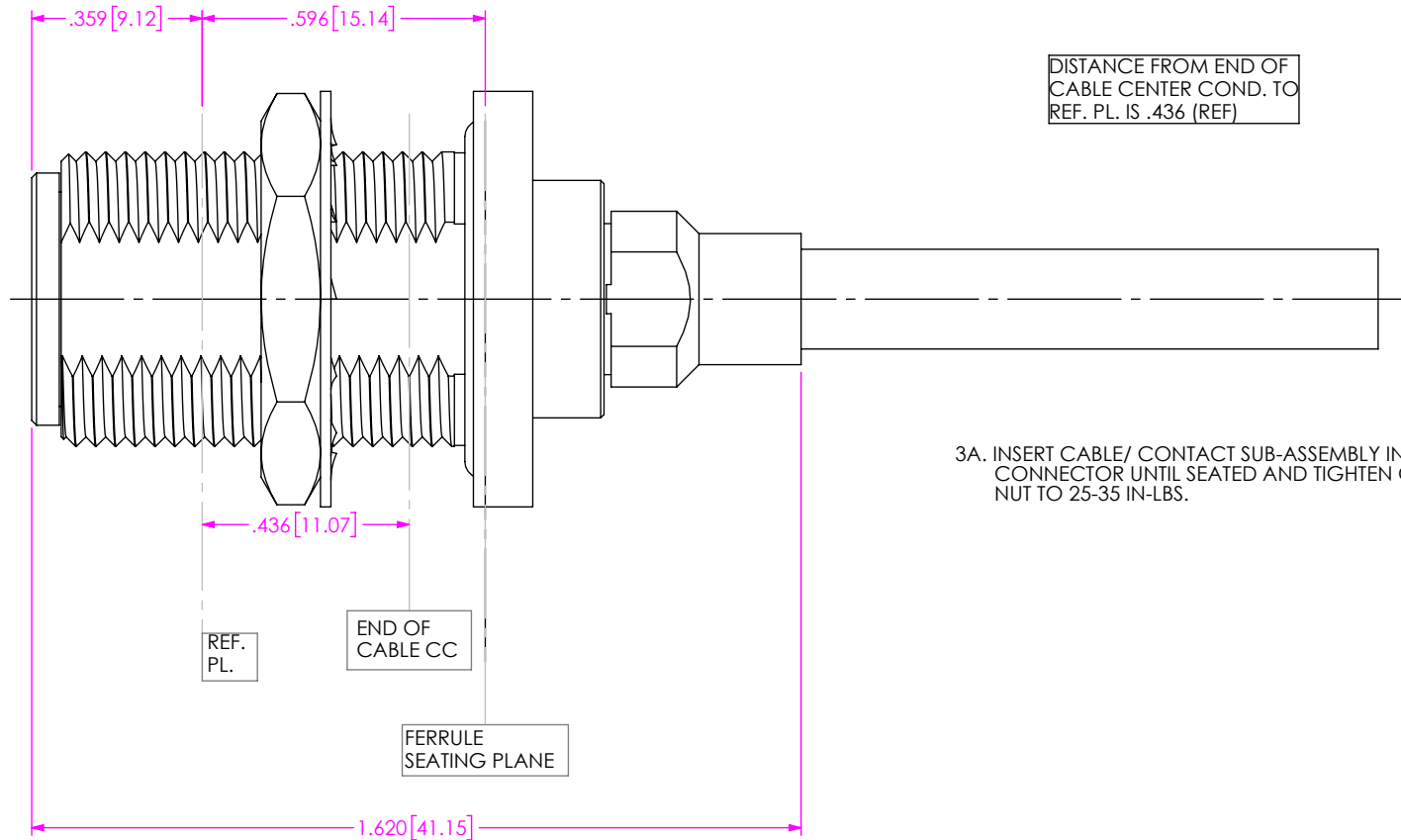
SHEET SCALE: 2.5:1

DESCRIPTION: TYPE N BULKHEAD JACK. SOLDER CLAMP FOR HARBOUR LL142 CABLE

DWG. NO. PRF06-J-C-EP-142-BS

BY: EVE L 05/18/2019 SHEET 2 OF 3

# CABLE APPLICATION VIEWS



3A. INSERT CABLE/ CONTACT SUB-ASSEMBLY INTO CONNECTOR UNTIL SEATED AND TIGHTEN CLAMP NUT TO 25-35 IN-LBS.

IN-PROCESS VIEW 4

**PROPRIETARY NOTE**  
 THIS DOCUMENT CONTAINS CONFIDENTIAL AND PROPRIETARY INFORMATION AND ALL DESIGN, MANUFACTURING, REPRODUCTION, USE, PATENT RIGHTS AND SALES RIGHTS ARE EXPRESSLY RESERVED BY SAMTEC, INC. THIS DOCUMENT SHALL NOT BE DISCLOSED, IN WHOLE OR PART, TO ANY UNAUTHORIZED PERSON OR ENTITY NOR REPRODUCED, TRANSFERRED OR INCORPORATED IN ANY OTHER PROJECT IN ANY MANNER WITHOUT THE EXPRESS WRITTEN CONSENT OF SAMTEC, INC.



520 PARK EAST BLVD, NEW ALBANY, IN 47150  
 PHONE: 812-944-6733 FAX: 812-948-5047  
 e-Mail info@SAMTEC.com code 55322

DO NOT SCALE DRAWING

SHEET SCALE: 2.5:1

DESCRIPTION: TYPE N BULKHEAD JACK, SOLDER CLAMP FOR HARBOUR LL142 CABLE

DWG. NO. PRF06-J-C-EP-142-BS

BY: EVE L 05/18/2019 SHEET 3 OF 3