

DESIGNED & DIMENSIONED
IN INCHES[MILLIMETERS]

PRF06-P-C-EP-120A-SS

DO NOT
SCALE FROM
THIS PRINT

SERIES
-06: NTPE

GENDER
-P: PLUG

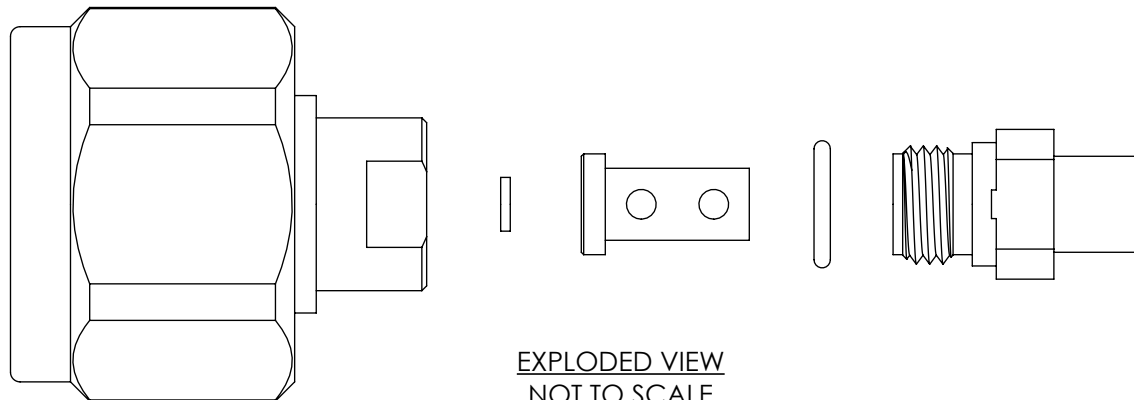
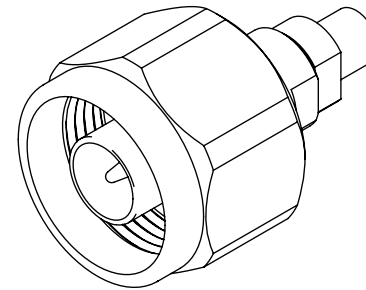
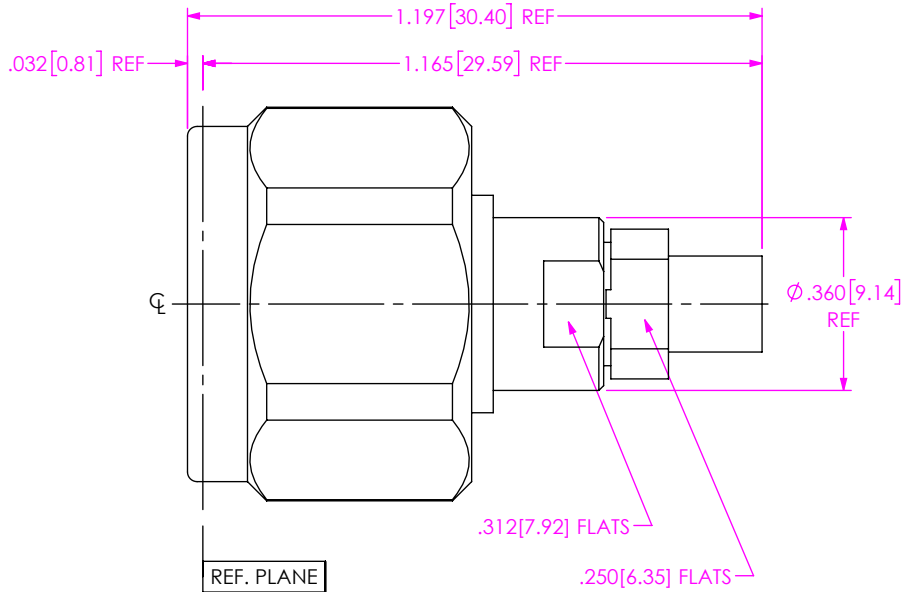
TYPE
-C: CABLE

FINISH
-EP: 50µ" EXTRA HEAVY GOLD
CENTER CONTACT, PASSIVATED
OUTER CONTACT

TERMINATION
-S: SOLDER CLAMP

ORIENTATION
-S: STRAIGHT

CABLE TYPE
-120A: SEMFLEX HP120



NOTES:

- MATERIAL:
BODY, BUSHING, COUPLING NUT & CLAMP NUT: STAINLESS STEEL.
PIN: BERYLLIUM COPPER.
SOLDER FERRULE: BRASS.
GASKET & O-RING: SILICONE RUBBER.
DIELECTRIC BEADS: ULTEM 1000.
INSULATORS: PTFE FLUOROCARBON.
- FINISH:
BODY, BUSHING, COUPLING NUT & CLAMP NUT: PASSIVATED.
PIN & SOLDER FERRULE: GOLD OVER NICKEL PLATE,
50 µIN MIN GOLD OVER 50 µIN MIN NICKEL.

3. PCI P/N: 3325.

UNLESS OTHERWISE SPECIFIED,
DIMENSIONS ARE IN INCHES.
TOLERANCES ARE:
DECIMALS ANGLES
.XX: ±.01 [0.3] 1°
.XXX: ±.005 [0.13]
.XXXX: ±.0005 [0.013]

PROPRIETARY NOTE
* THIS DOCUMENT CONTAINS CONFIDENTIAL AND PROPRIETARY INFORMATION AND ALL DESIGN, MANUFACTURING, REPRODUCTION, USE, PATENT RIGHTS AND SALES RIGHTS ARE EXPRESSLY RESERVED BY SAMTEC, INC. THIS DOCUMENT SHALL NOT BE DISCLOSED, IN WHOLE OR PART, TO ANY UNAUTHORIZED PERSON OR ENTITY NOR REPRODUCED, TRANSFERRED OR INCORPORATED IN ANY OTHER PROJECT IN ANY MANNER WITHOUT THE EXPRESS WRITTEN CONSENT OF SAMTEC, INC.



520 PARK EAST BLVD, NEW ALBANY, IN 47150
PHONE: 812-944-6733 FAX: 812-948-5047
e-Mail: info@SAMTEC.com code 55322

DO NOT SCALE DRAWING

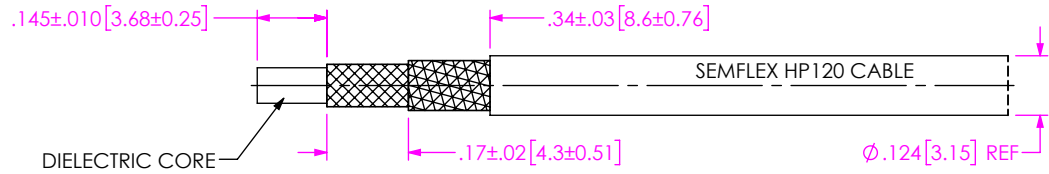
SHEET SCALE: 2.5:1

DESCRIPTION: NTPE PLUG, SOLDER CLAMP FOR SEMFLEX HP120 CABLE

DWG. NO. PRF06-P-C-EP-120A-SS

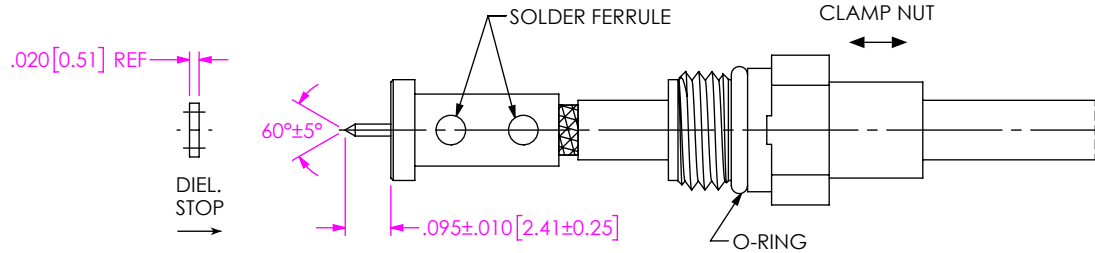
BY: CHRISTIAN S. 05/09/2019 SHEET 1 OF 2

1. TRIM CABLE TO EXPOSE DIELECTRIC AND BRAIDS AS SHOWN.



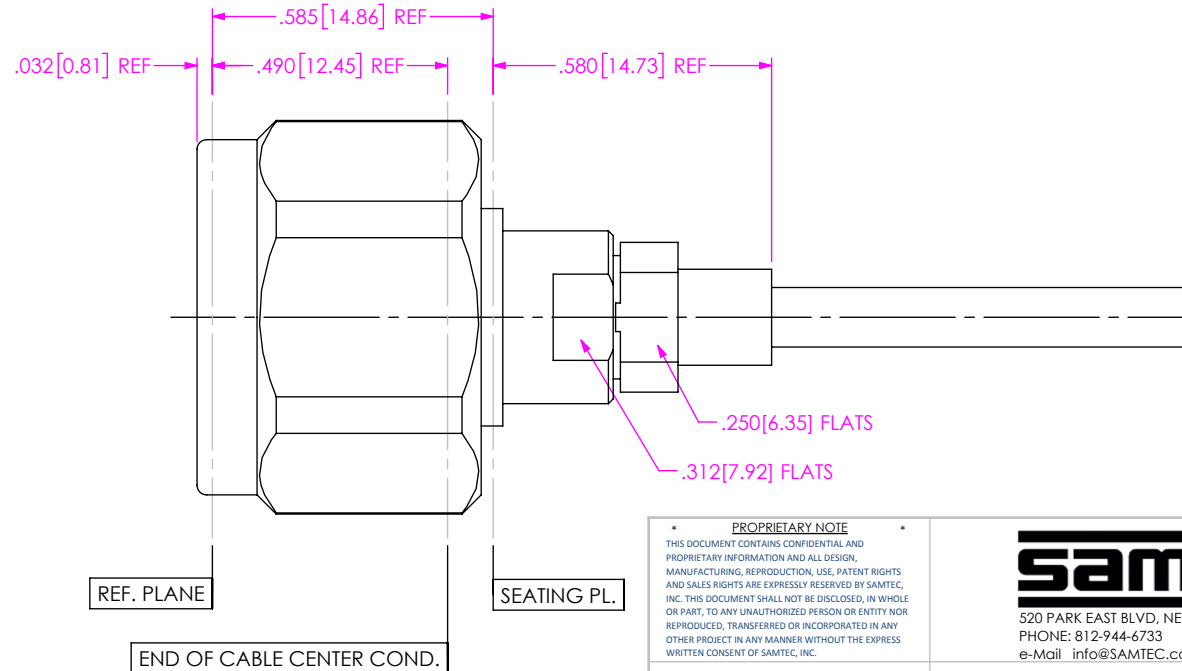
IN-PROCESS 1

- 2A. SLIDE CLAMP NUT ONTO CABLE AS SHOWN.
- 2B. INSERT CABLE INTO SOLDER FERRULE UNTIL BRAIDS FULLY SEAT. THEN SOLDER FERRULE TO BRAIDS WHERE SHOWN.
- 2C. TRIM CABLE DIELECTRIC FLUSH WITH FERRULE FACE AND POINT CENTER CONDUCTOR. (DO NOT SCORE CENTER CONDUCTOR)
- 2D. SLIDE DIELECTRIC STOP OVER CENTER CONDUCTOR AGAINST FERRULE FACE.



IN-PROCESS 2

3. INSERT CABLE SUB-ASSEMBLY INTO CONNECTOR UNTIL SEATED AND TIGHTEN CLAMP NUT TO 25-35 IN-LBS.



IN-PROCESS 3

PROPRIETARY NOTE
 THIS DOCUMENT CONTAINS CONFIDENTIAL AND PROPRIETARY INFORMATION AND ALL DESIGN, MANUFACTURING, REPRODUCTION, USE, PATENT RIGHTS AND SALES RIGHTS ARE EXPRESSLY RESERVED BY SAMTEC, INC. THIS DOCUMENT SHALL NOT BE DISCLOSED, IN WHOLE OR PART, TO ANY UNAUTHORIZED PERSON OR ENTITY NOR REPRODUCED, TRANSFERRED OR INCORPORATED IN ANY OTHER PROJECT IN ANY MANNER WITHOUT THE EXPRESS WRITTEN CONSENT OF SAMTEC, INC.



520 PARK EAST BLVD, NEW ALBANY, IN 47150
 PHONE: 812-944-6733 FAX: 812-948-5047
 e-Mail info@SAMTEC.com code 55322

DO NOT SCALE DRAWING
 SHEET SCALE: 2.5:1

DESCRIPTION: NTPE PLUG, SOLDER CLAMP FOR SEMFLEX HP120 CABLE

DWG. NO. PRF06-P-C-EP-120A-SS

BY: CHRISTIAN S. 05/09/2019 SHEET 2 OF 2