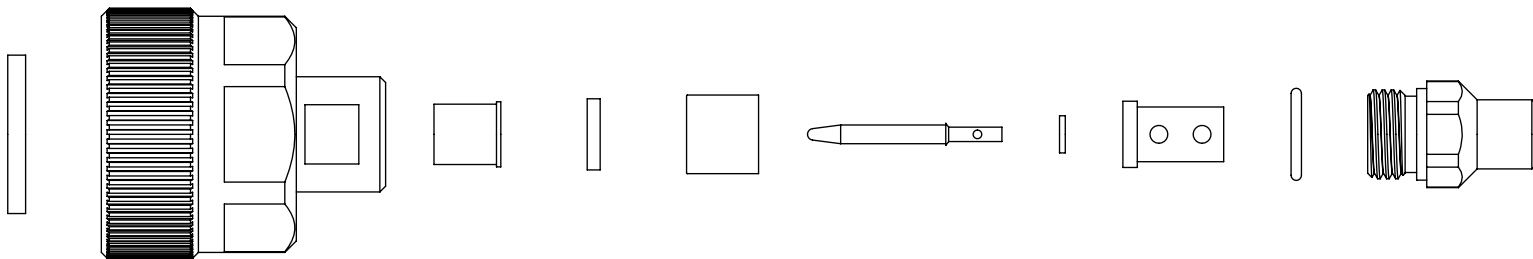
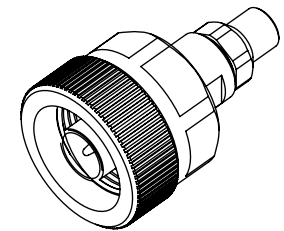
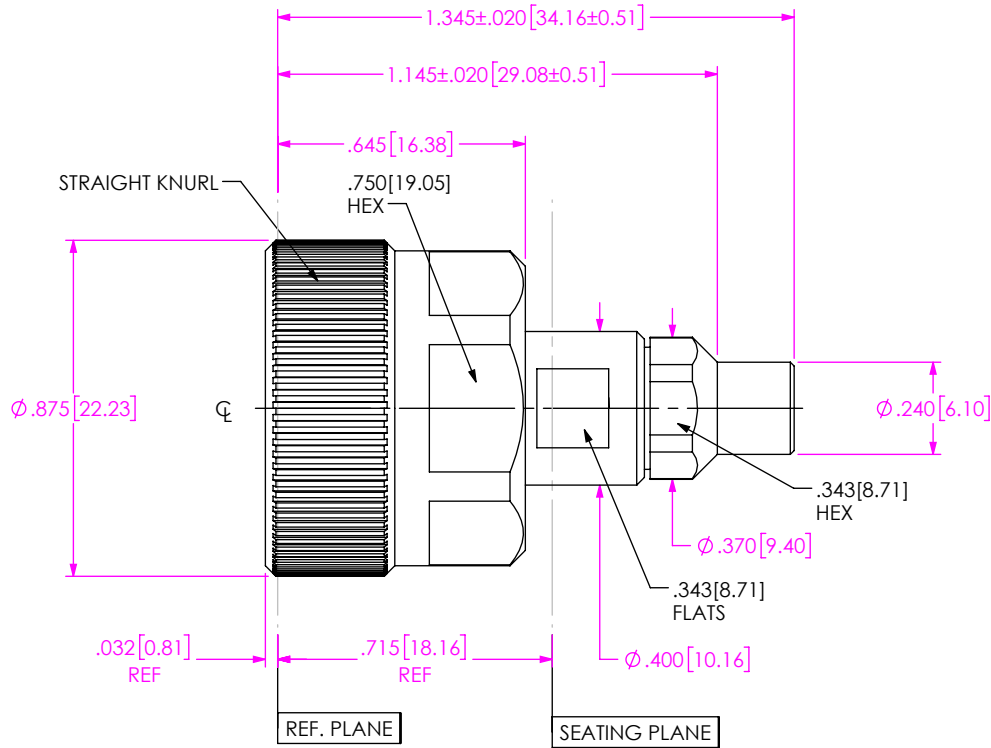


DO NOT SCALE FROM THIS PRINT

DESIGNED & DIMENSIONED IN INCHES[MILLIMETERS]

PRF06-P-C-EP-135-SS

SERIES -06: NTPE
 GENDER -P: PLUG
 TYPE -C: CABLE
 FINISH -EP: 50µ" EXTRA HEAVY GOLD CENTER CONTACT, PASSIVATED OUTER CONTACT
 TERMINATION -S: SOLDER CLAMP
 ORIENTATION -S: STRAIGHT
 CABLE TYPE -135: DYNAWAVE DF440W



EXPLODED VIEW
 NOT TO SCALE
 (FOR CLARITY ONLY)

- NOTES:
- MATERIAL:
 BODY, BUSHING, COUPLING NUT & CLAMP NUT: STAINLESS STEEL.
 PIN & LOCK RING: BERYLLIUM COPPER.
 SOLDER FERRULE: BRASS.
 GASKET & O-RING: SILICONE RUBBER.
 INSULATOR: PTFE.
 BEAD: ULTEM 1000.
 - FINISH:
 BODY, BUSHING, COUPLING NUT & CLAMP NUT: PASSIVATED.
 PIN & SOLDER FERRULE: GOLD OVER NICKEL PLATE,
 50 µIN MIN GOLD OVER 50 µIN MIN NICKEL.
 - PCI P/N: 3746.

UNLESS OTHERWISE SPECIFIED, DIMENSIONS ARE IN INCHES.
 TOLERANCES ARE:
 DECIMALS ANGLES
 .XX: ±.01 [0.3]
 .XXX: ±.002 [0.05]
 .XXXX: ±.0005 [0.013]

PROPRIETARY NOTE
 THIS DOCUMENT CONTAINS CONFIDENTIAL AND PROPRIETARY INFORMATION AND ALL DESIGN, MANUFACTURING, REPRODUCTION, USE, PATENT RIGHTS AND SALES RIGHTS ARE EXPRESSLY RESERVED BY SAMTEC, INC. THIS DOCUMENT SHALL NOT BE DISCLOSED, IN WHOLE OR PART, TO ANY UNAUTHORIZED PERSON OR ENTITY NOR REPRODUCED, TRANSFERRED OR INCORPORATED IN ANY OTHER PROJECT IN ANY MANNER WITHOUT THE EXPRESS WRITTEN CONSENT OF SAMTEC, INC.



520 PARK EAST BLVD, NEW ALBANY, IN 47150
 PHONE: 812-944-6733 FAX: 812-948-5047
 e-Mail: info@SAMTEC.com code 55322

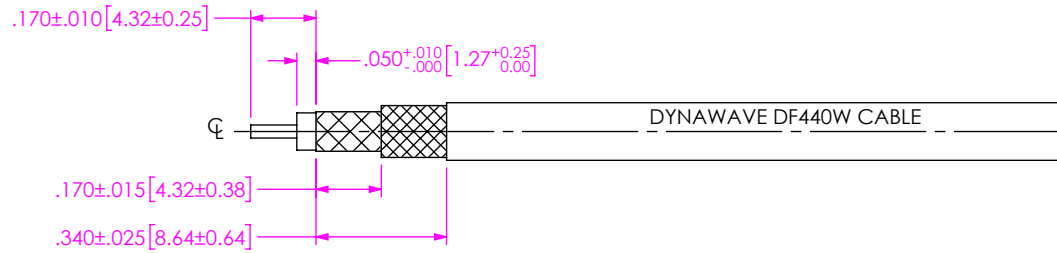
DO NOT SCALE DRAWING

SHEET SCALE: 2:1

DESCRIPTION: N PLUG, SOLDER CLAMP FOR DYNAWAVE DF440W CABLE, KNURL/HEX NUT

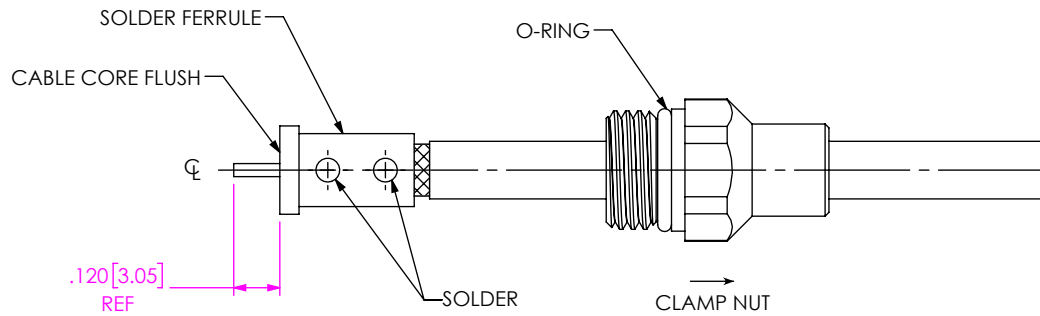
DWG. NO. PRF06-P-C-EP-135-SS

BY: WILLY Y 7/1/2022 SHEET 1 OF 3



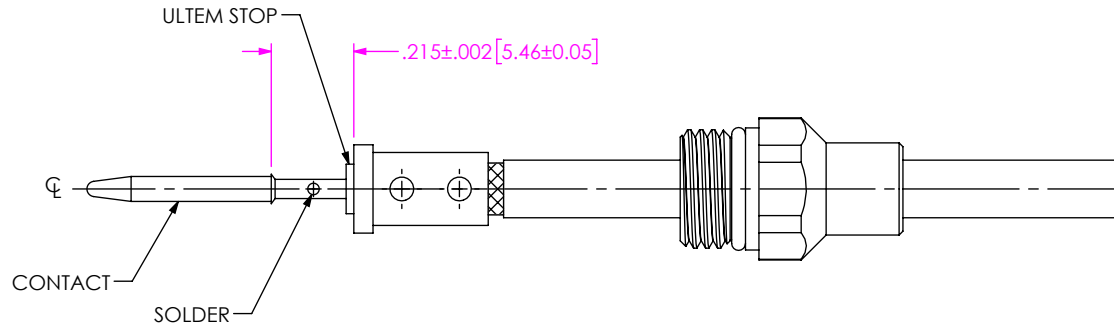
1. TRIM CABLE TO EXPOSE CENTER CONDUCTOR, DIELECTRIC, AND BRAIDS AS SHOWN.

IN-PROCESS 1



2A. INSERT O-RING ONTO CLAMP NUT WHERE SHOWN AND SLIDE CLAMP NUT OVER CABLE IN ORIENTATION SHOWN.
2B. INSERT CABLE INTO SOLDER FERRULE UNTIL CABLE DIELECTRIC IS FLUSH WITH SOLDER FERRULE FACE AND SOLDER CABLE BRAIDS WHERE SHOWN.

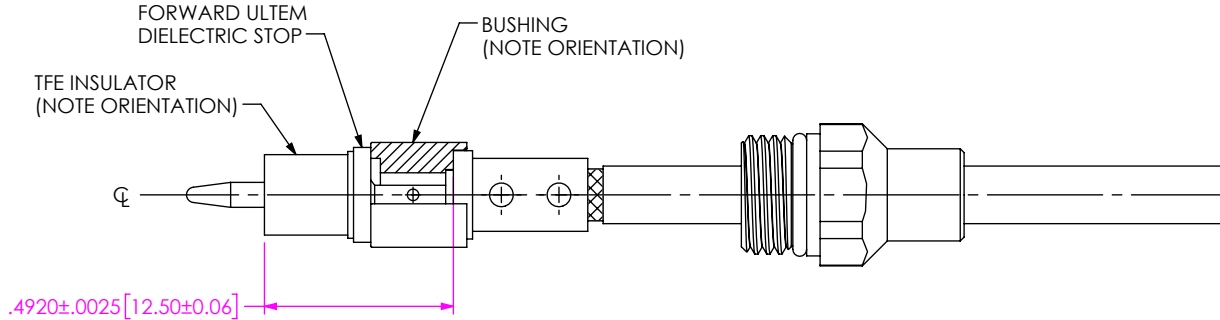
IN-PROCESS 2



3A. SLIDE ULTEM DIELECTRIC STOP OVER CABLE CENTER CONDUCTOR AGAINST SOLDER FERRULE AS SHOWN.
3B. SOLDER CONTACT FLUSH AGAINST STOP TO DIMENSION SHOWN.

IN-PROCESS 3

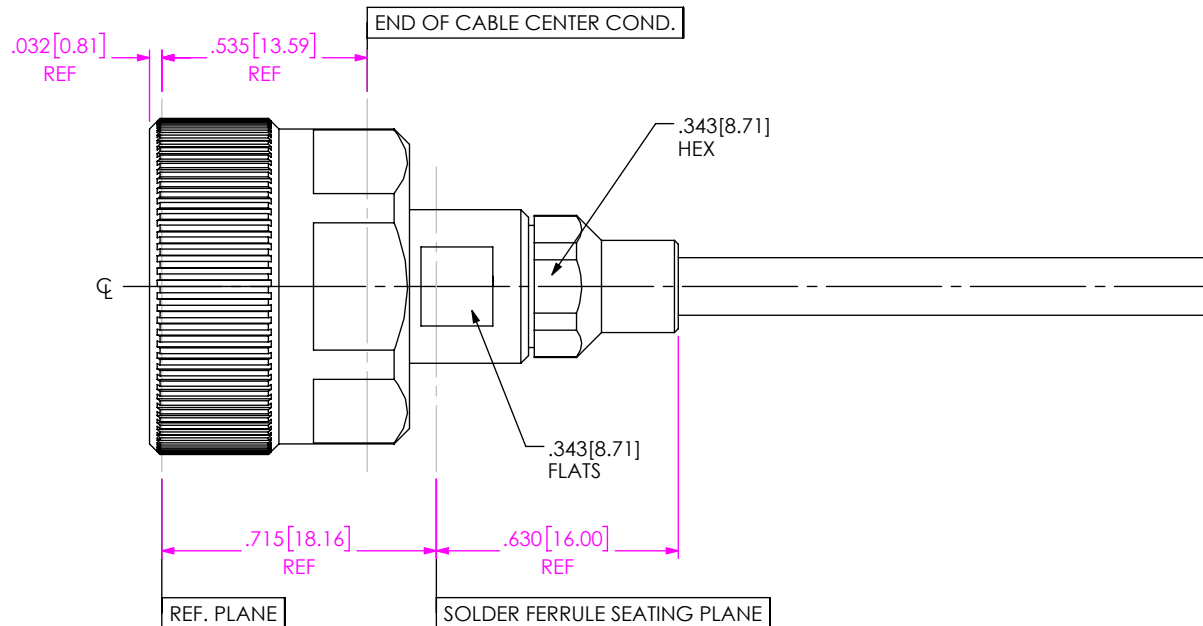
<p>DO NOT SCALE DRAWING</p> <p>SHEET SCALE: 3:2</p>	<p>PROPRIETARY NOTE</p> <p>THIS DOCUMENT CONTAINS CONFIDENTIAL AND PROPRIETARY INFORMATION AND ALL DESIGN, MANUFACTURING, REPRODUCTION, USE, PATENT RIGHTS AND SALES RIGHTS ARE EXPRESSLY RESERVED BY SAMTEC, INC. THIS DOCUMENT SHALL NOT BE DISCLOSED, IN WHOLE OR PART, TO ANY UNAUTHORIZED PERSON OR ENTITY NOR REPRODUCED, TRANSFERRED OR INCORPORATED IN ANY OTHER PROJECT IN ANY MANNER WITHOUT THE EXPRESS WRITTEN CONSENT OF SAMTEC, INC.</p>	<p>520 PARK EAST BLVD, NEW ALBANY, IN 47150 PHONE: 812-944-6733 FAX: 812-948-5047 e-Mail info@SAMTEC.com code 55322</p>
	<p>DESCRIPTION: N PLUG, SOLDER CLAMP FOR DYNAWAVE DF440W CABLE, KNURL/HEX NUT</p>	<p>DWG. NO. PRF06-P-C-EP-135-SS</p>
	<p>BY: WILLY Y 7/1/2022</p>	<p>SHEET 2 OF 3</p>



4. SLIDE BUSHING, FORWARD ULTEM STOP & FORWARD TEFロン INSULATOR OVER CONTACT AS SHOWN. (NOTE: ORIENT BUSHING WITH DEEPER SMALLER DIAMETER C BORE TOWARD SOLDER FERRULE. ORIENT FORWARD TEF INSULATOR WITH SHOULDER TOWARD DIELECTRIC STOP).

NOTE: BUSHING WILL NOT SEAT AGAINST SOLDER FERRULE IF ORIENTATION IS REVERSED.

IN-PROCESS 4



5. INSERT CABLE/CONTACT SUB-ASSEMBLY INTO CONNECTOR UNTIL SEATED AND TIGHTEN CLAMP NUT TO 35-45 IN-LBS.

IN-PROCESS 5

PROPRIETARY NOTE
 THIS DOCUMENT CONTAINS CONFIDENTIAL AND PROPRIETARY INFORMATION AND ALL DESIGN, MANUFACTURING, REPRODUCTION, USE, PATENT RIGHTS AND SALES RIGHTS ARE EXPRESSLY RESERVED BY SAMTEC, INC. THIS DOCUMENT SHALL NOT BE DISCLOSED, IN WHOLE OR PART, TO ANY UNAUTHORIZED PERSON OR ENTITY NOR REPRODUCED, TRANSFERRED OR INCORPORATED IN ANY OTHER PROJECT IN ANY MANNER WITHOUT THE EXPRESS WRITTEN CONSENT OF SAMTEC, INC.



520 PARK EAST BLVD, NEW ALBANY, IN 47150
 PHONE: 812-944-6733 FAX: 812-948-5047
 e-Mail info@SAMTEC.com code 55322

DO NOT SCALE DRAWING

SHEET SCALE: 3:2

DESCRIPTION: N PLUG, SOLDER CLAMP FOR DYNAWAVE DF440W CABLE, KNURL/HEX NUT

DWG. NO. PRF06-P-C-EP-135-SS

BY: WILLY Y 7/1/2022 SHEET 3 OF 3