

DO NOT SCALE FROM THIS PRINT

DESIGNED & DIMENSIONED IN INCHES[MILLIMETERS]

PRF06-P-C-EP-135B-SS

SERIES  
-06: NTPE

GENDER  
-P: PLUG

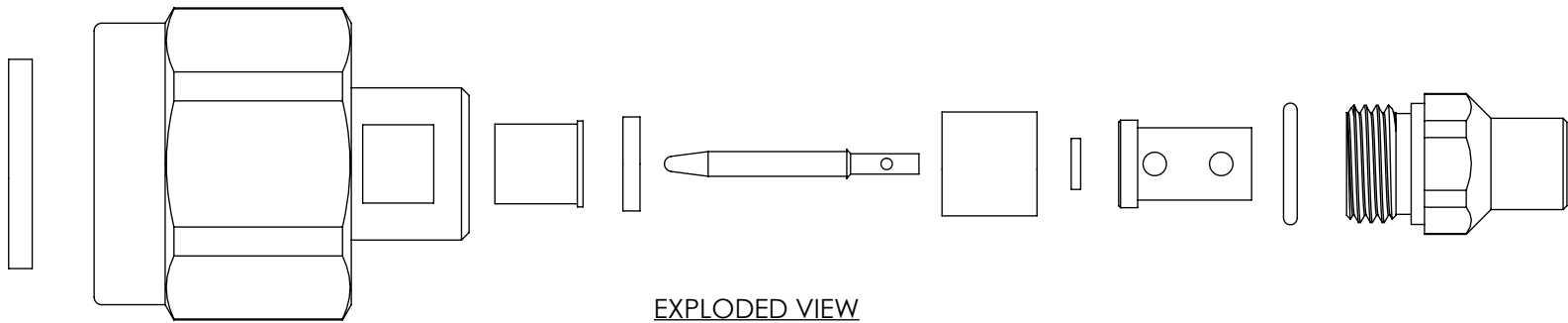
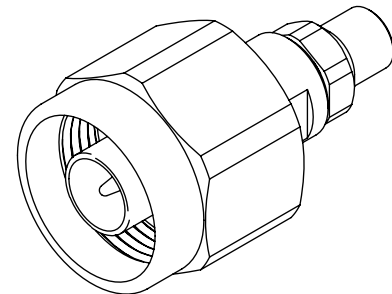
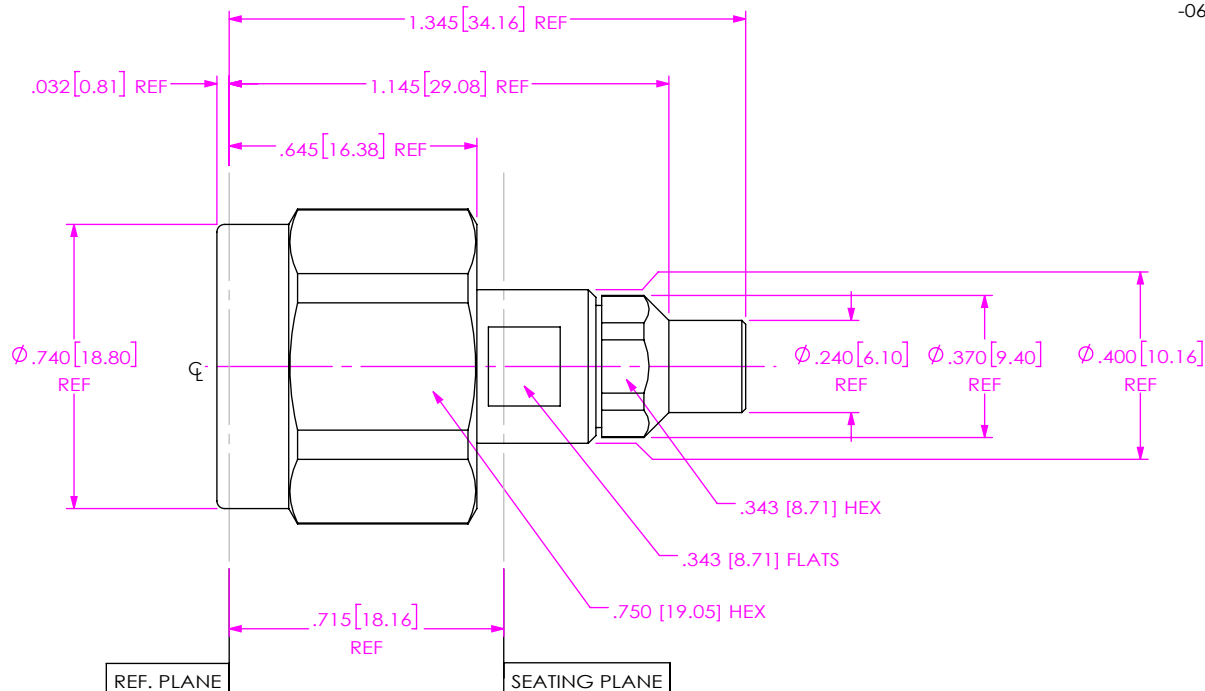
TYPE  
-C: CABLE

FINISH  
-EP: 50µ" EXTRA HEAVY GOLD CENTER CONTACT, PASSIVATED OUTER CONTACT

TERMINATION  
-S: SOLDER CLAMP

ORIENTATION  
-S: STRAIGHT

CABLE TYPE  
-135B: LAB-FLEX 160S



EXPLODED VIEW  
NOT TO SCALE  
(FOR CLARITY ONLY)

- NOTES:
- MATERIAL:  
 BODY, COUPLING NUT, BUSHING & CLAMP NUT: STAINLESS STEEL.  
 CONTACT & LOCK RING: BERYLLIUM COPPER.  
 SOLDER FERRULE: BRASS.  
 GASKET & O-RING: SILICONE RUBBER.  
 INSULATOR: PTFE.  
 DIELECTRIC STOP, FORWARD BEAD: ULTEM 1000.
  - FINISH:  
 BODY, COUPLING NUT, BUSHING & CLAMP NUT: PASSIVATED.  
 SOLDER FERRULE, CONTACT: GOLD OVER NICKEL PLATE,  
 50 µIN MIN GOLD OVER 50 µIN MIN NICKEL.
  - PCI P/N: 4159.

UNLESS OTHERWISE SPECIFIED, DIMENSIONS ARE IN INCHES.  
 TOLERANCES ARE:  
 DECIMALS                      ANGLES  
 .XX: ±.01 [0.3]                      1°  
 .XXX: ±.005 [0.13]  
 .XXXX: ±.0005 [0.013]

**PROPRIETARY NOTE**  
 THIS DOCUMENT CONTAINS CONFIDENTIAL AND PROPRIETARY INFORMATION AND ALL DESIGN, MANUFACTURING, REPRODUCTION, USE, PATENT RIGHTS AND SALES RIGHTS ARE EXPRESSLY RESERVED BY SAMTEC, INC. THIS DOCUMENT SHALL NOT BE DISCLOSED, IN WHOLE OR PART, TO ANY UNAUTHORIZED PERSON OR ENTITY NOR REPRODUCED, TRANSFERRED OR INCORPORATED IN ANY OTHER PROJECT IN ANY MANNER WITHOUT THE EXPRESS WRITTEN CONSENT OF SAMTEC, INC.



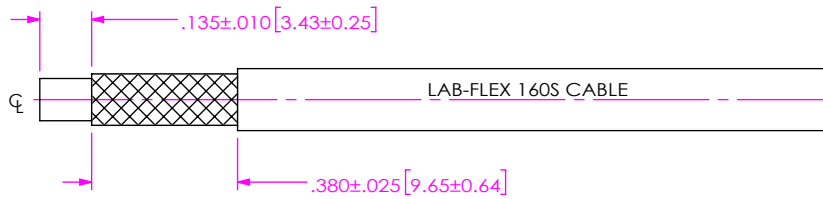
520 PARK EAST BLVD, NEW ALBANY, IN 47150  
 PHONE: 812-944-6733    FAX: 812-948-5047  
 e-Mail: info@SAMTEC.com    code 55322

DO NOT SCALE DRAWING                      SHEET SCALE: 2:1

DESCRIPTION: N PLUG (18 GHz), SOLDER CLAMP FOR LAB-FLEX 160S CABLE

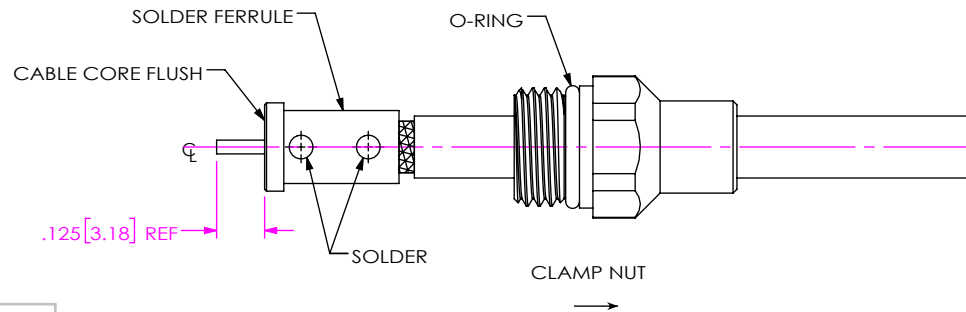
DWG. NO. PRF06-P-C-EP-135B-SS

BY: EVE L                      08/12/2021                      SHEET 1 OF 3



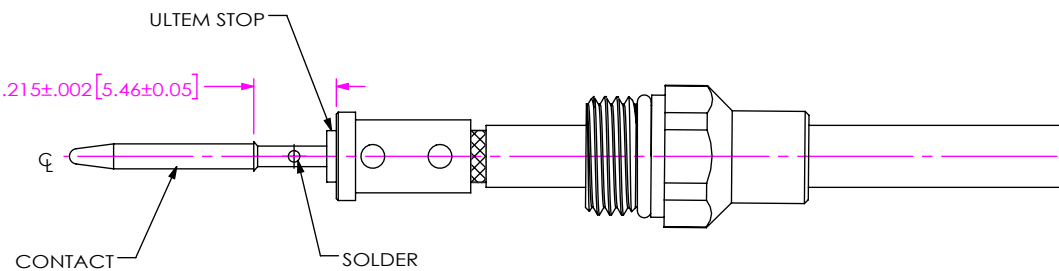
1A. TRIM CABLE TO EXPOSE DIELECTRIC AND OUTER BRAIDS AS SHOWN.

IN-PROCESS 1




- 2A. INSTALL O-RING ONTO CLAMP NUT WHERE SHOWN AND SLIDE CLAMP NUT OVER CABLE IN ORIENTATION SHOWN.
- 2B. INSERT CABLE INTO SOLDER FERRULE UNTIL BRAIDS SEAT THEN SOLDER BRAIDS TO FERRULE WHERE SHOWN.
- 2C. TRIM CABLE DIELECTRIC FLUSH WITH FACE OF SOLDER FERRULE.

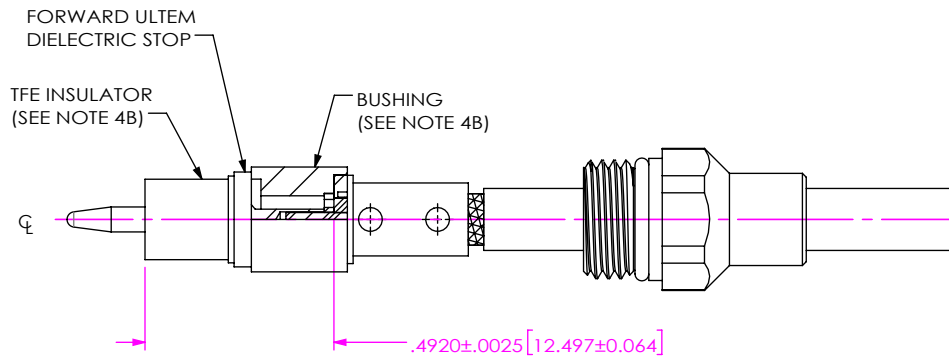
IN-PROCESS 2



- 3A. SLIDE ULTEM DIELECTRIC STOP OVER CABLE CENTER CONDUCTOR AGAINST SOLDER FERRULE AS SHOWN.
- 3B. SOLDER CONTACT FLUSH AGAINST STOP TO DIMENSION SHOWN.

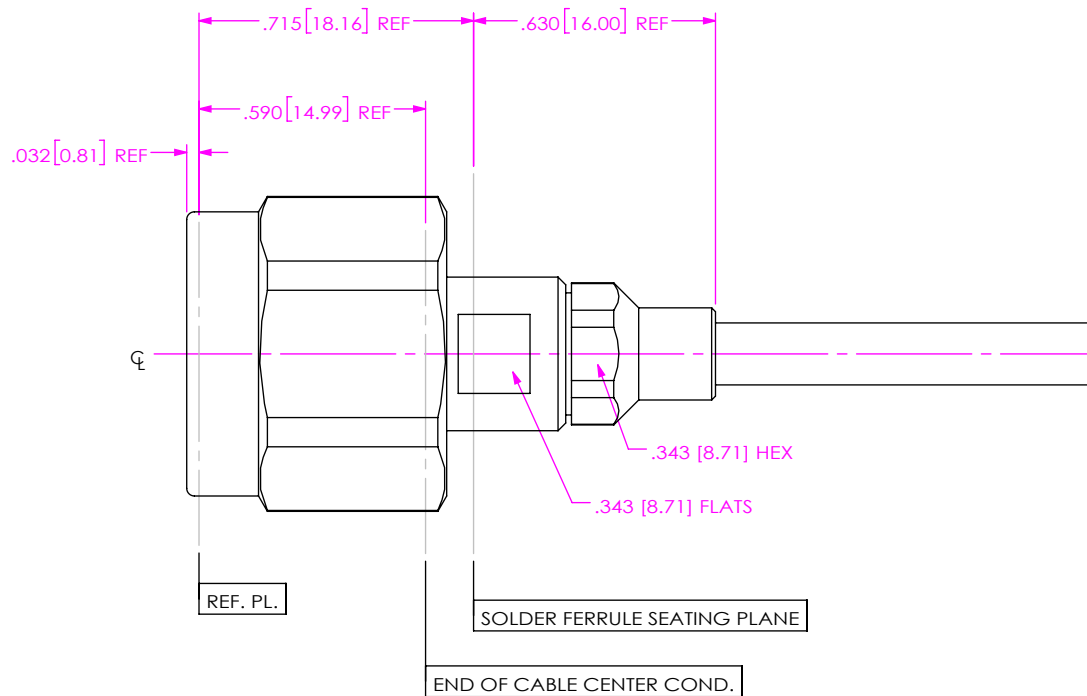
IN-PROCESS 3

<p><b>PROPRIETARY NOTE</b></p> <p>THIS DOCUMENT CONTAINS CONFIDENTIAL AND PROPRIETARY INFORMATION AND ALL DESIGN, MANUFACTURING, REPRODUCTION, USE, PATENT RIGHTS AND SALES RIGHTS ARE EXPRESSLY RESERVED BY SAMTEC, INC. THIS DOCUMENT SHALL NOT BE DISCLOSED, IN WHOLE OR PART, TO ANY UNAUTHORIZED PERSON OR ENTITY NOR REPRODUCED, TRANSFERRED OR INCORPORATED IN ANY OTHER PROJECT IN ANY MANNER WITHOUT THE EXPRESS WRITTEN CONSENT OF SAMTEC, INC.</p>	 <p>520 PARK EAST BLVD, NEW ALBANY, IN 47150          PHONE: 812-944-6733 FAX: 812-948-5047          e-Mail info@SAMTEC.com code 55322</p>
<p>DO NOT SCALE DRAWING</p> <p>SHEET SCALE: 2:1</p>	<p>DESCRIPTION: N PLUG (18 GHz), SOLDER CLAMP FOR LAB-FLEX 160S CABLE</p> <p>DWG. NO. PRF06-P-C-EP-135B-SS</p> <p>BY: EVE L 08/12/2021 SHEET 2 OF 3</p>



- 4A. SLIDE BUSHING FORWARD ULTEM STOP & FORWARD TEFLON INSULATOR OVER CONTACT AS SHOWN.
  - 4B. ORIENT BUSHING WITH LARGER DIAMETER C'BORE TOWARD SOLDER FERRULE. ORIENT FORWARD TFE INSULATOR WITH SHOULDER TOWARD STOP.
- NOTE: BUSHING WILL NOT SEAT AGAINST SOLDER FERRULE IF ORIENTATION IS REVERSED.

IN-PROCESS 4



- 5A. INSERT CABLE/CONTACT SUB-ASSEMBLY INTO CONNECTOR UNTIL SEATED AND TIGHTEN CLAMP NUT TO 35-45 IN-LBS.

IN-PROCESS 5

<p>DO NOT SCALE DRAWING</p> <p>SHEET SCALE: 2:1</p>	<p><b>PROPRIETARY NOTE</b></p> <p>THIS DOCUMENT CONTAINS CONFIDENTIAL AND PROPRIETARY INFORMATION AND ALL DESIGN, MANUFACTURING, REPRODUCTION, USE, PATENT RIGHTS AND SALES RIGHTS ARE EXPRESSLY RESERVED BY SAMTEC, INC. THIS DOCUMENT SHALL NOT BE DISCLOSED, IN WHOLE OR PART, TO ANY UNAUTHORIZED PERSON OR ENTITY NOR REPRODUCED, TRANSFERRED OR INCORPORATED IN ANY OTHER PROJECT IN ANY MANNER WITHOUT THE EXPRESS WRITTEN CONSENT OF SAMTEC, INC.</p>		<p>520 PARK EAST BLVD, NEW ALBANY, IN 47150                  PHONE: 812-944-6733 FAX: 812-948-5047                  e-Mail info@SAMTEC.com code 55322</p>
	<p>DESCRIPTION: N PLUG (18 GHz), SOLDER CLAMP FOR LAB-FLEX 160S CABLE</p>		
	<p>DWG. NO. PRF06-P-C-EP-135B-SS</p>	<p>BY: EVE L 08/12/2021 SHEET 3 OF 3</p>	