

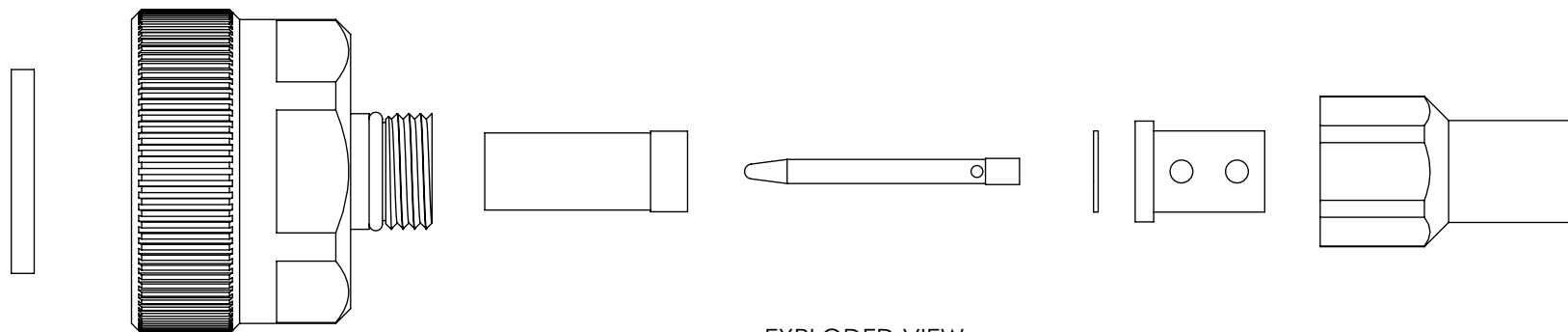
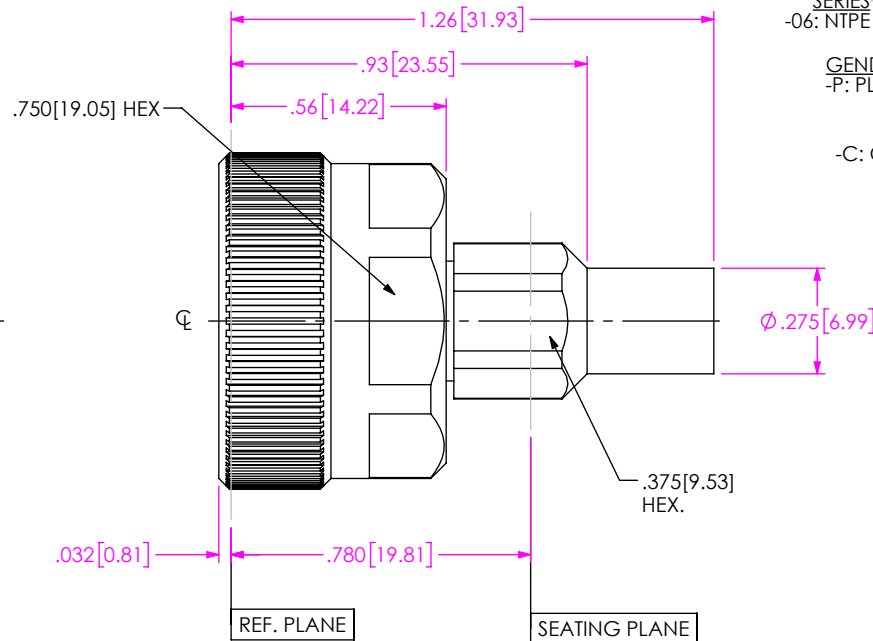
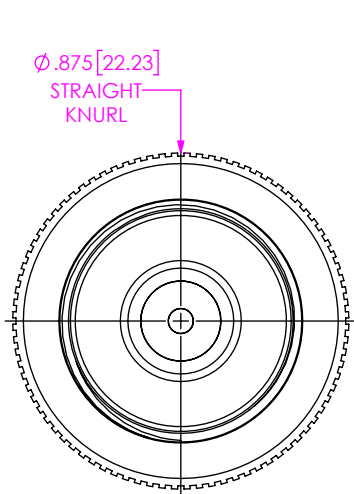
DO NOT SCALE FROM THIS PRINT

DESIGNED AND DIMENSIONED IN INCHES[MILLIMETERS]  
ALL DIMENSIONS REFERENCE EXCEPT AS SHOWN

PRF06-P-C-EP-142-SS-1

SERIES -06: NTPE  
GENDER -P: PLUG  
TYPE -C: CABLE  
FINISH -EP: 50µ" EXTRA HEAVY GOLD CENTER CONTACT, PASSIVATED OUTER CONTACT

OPTION -1  
TERMINATION -S: SOLDER CLAMP  
ORIENTATION -S: STRAIGHT  
CABLE TYPE -142: HARBOUR LL142



EXPLODED VIEW  
NOT TO SCALE  
(FOR CLARITY ONLY)

- NOTES:
- MATERIAL:  
BODY, COUPLING NUT & CLAMP NUT: STAINLESS STEEL.  
PIN: BERYLLIUM COPPER.  
SOLDER FERRULE: BRASS.  
GASKET & O-RING: SILICONE RUBBER.  
INSULATOR & CABLE STOP: PTFE.
  - FINISH:  
BODY, COUPLING NUT & CLAMP NUT: PASSIVATED.  
PIN: GOLD OVER NICKEL PLATE, 50µ" MIN GOLD OVER 50µ" MIN NICKEL.  
SOLDER FERRULE: GOLD OVER NICKEL PLATE, 10µ" MIN GOLD OVER 50µ" MIN NICKEL.
  - PCI P/N: 3838.

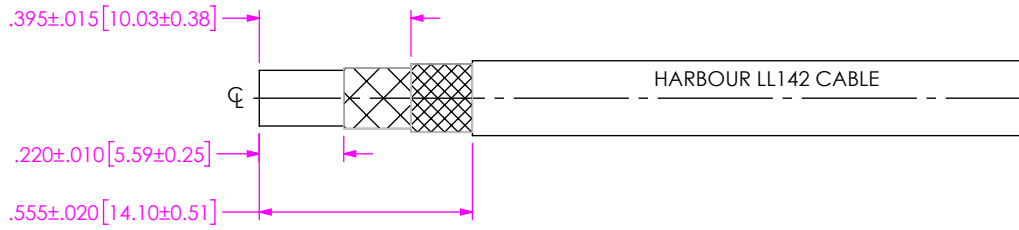
**PROPRIETARY NOTE**  
THIS DOCUMENT CONTAINS CONFIDENTIAL AND PROPRIETARY INFORMATION AND ALL DESIGN, MANUFACTURING, REPRODUCTION, USE, PATENT RIGHTS AND SALES RIGHTS ARE EXPRESSLY RESERVED BY SAMTEC, INC. THIS DOCUMENT SHALL NOT BE DISCLOSED, IN WHOLE OR PART, TO ANY UNAUTHORIZED PERSON OR ENTITY NOR REPRODUCED, TRANSFERRED OR INCORPORATED IN ANY OTHER PROJECT IN ANY MANNER WITHOUT THE EXPRESS WRITTEN CONSENT OF SAMTEC, INC.

DO NOT SCALE DRAWING  
SHEET SCALE: 2:1

**samtec**  
520 PARK EAST BLVD, NEW ALBANY, IN 47150  
PHONE: 812-944-6733 FAX: 812-948-5047  
e-Mail info@SAMTEC.com code 55322

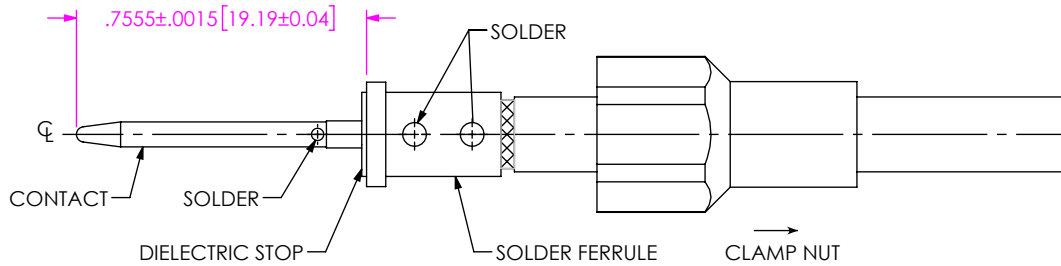
DESCRIPTION: PLUG (18 GHZ), SOLDER CLAMP FOR HARBOUR LL142 CABLE, KNURL/HEX NUT

DWG. NO. PRF06-P-C-EP-142-SS-1



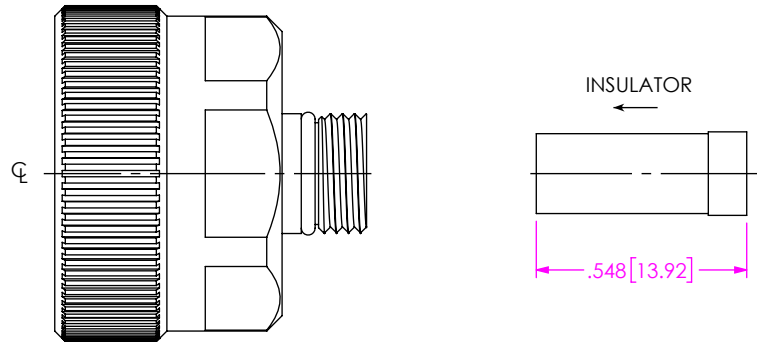
1. TRIM CABLE AS SHOWN.

IN-PROCESS 1



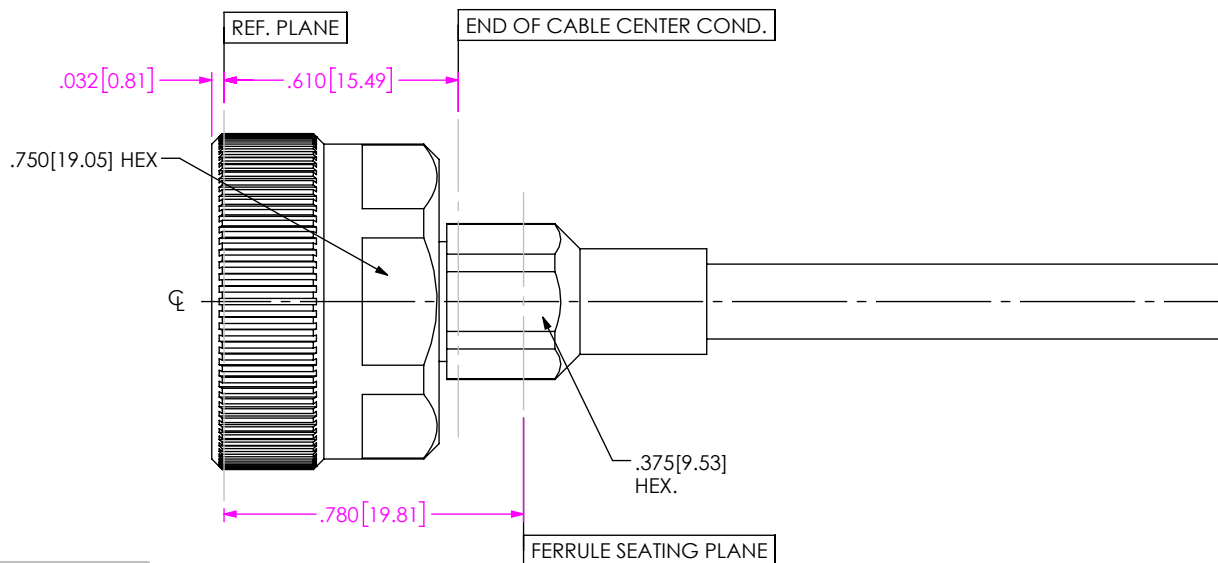
- 2A. SLIDE CLAMP NUT OVER CABLE AS SHOWN.
- 2B. INSERT CABLE INTO SOLDER FERRULE AS SHOWN THEN SOLDER BRAIDS TO FERRULE WHERE INDICATED.
- 2C. TRIM EXPOSED CABLE DIELECTRIC FLUSH WITH SOLDER FERRULE FACE.
- 2D. SLIDE DIELECTRIC STOP OVER CABLE CENTER CONDUCTOR AGAINST FERRULE FACE AND SOLDER CONTACT FLUSH AGAINST STOP TO DIMENSION SHOWN.

IN-PROCESS 2



3. INSTALL INSULATOR INTO SUB ASSEMBLY.

IN-PROCESS 3



- 4A. INSERT CABLE/ CONTACT SUB-ASSEMBLY INTO CONNECTOR UNTIL SEATED.
- 4B. TIGHTEN CONNECTOR COUPLING NUT TO MATING TYPE N JACK.
- 4C. TIGHTEN REAR CLAMP NUT TO 30-40 IN-LBS AND DISENGAGE MAIN INTERGACE FROM JACK.

IN-PROCESS 4

**PROPRIETARY NOTE**  
 THIS DOCUMENT CONTAINS CONFIDENTIAL AND PROPRIETARY INFORMATION AND ALL DESIGN, MANUFACTURING, REPRODUCTION, USE, PATENT RIGHTS AND SALES RIGHTS ARE EXPRESSLY RESERVED BY SAMTEC, INC. THIS DOCUMENT SHALL NOT BE DISCLOSED, IN WHOLE OR PART, TO ANY UNAUTHORIZED PERSON OR ENTITY NOR REPRODUCED, TRANSFERRED OR INCORPORATED IN ANY OTHER PROJECT IN ANY MANNER WITHOUT THE EXPRESS WRITTEN CONSENT OF SAMTEC, INC.



520 PARK EAST BLVD, NEW ALBANY, IN 47150  
 PHONE: 812-944-6733 FAX: 812-948-5047  
 e-Mail info@SAMTEC.com code 55322

DO NOT SCALE DRAWING

SHEET SCALE: 2:1

DESCRIPTION: N PLUG (18 GHZ), SOLDER CLAMP FOR HARBOUR LL142 CABLE, KNURL/HEX NUT

DWG. NO. PRF06-P-C-EP-142-SS-1

BY: WILLY Y 7/11/2022 SHEET 2 OF 2