

DO NOT SCALE FROM THIS PRINT

PRF06-P-C-EP-142A-SS

SERIES  
-06: N TYPE

GENDER  
-P: PLUG

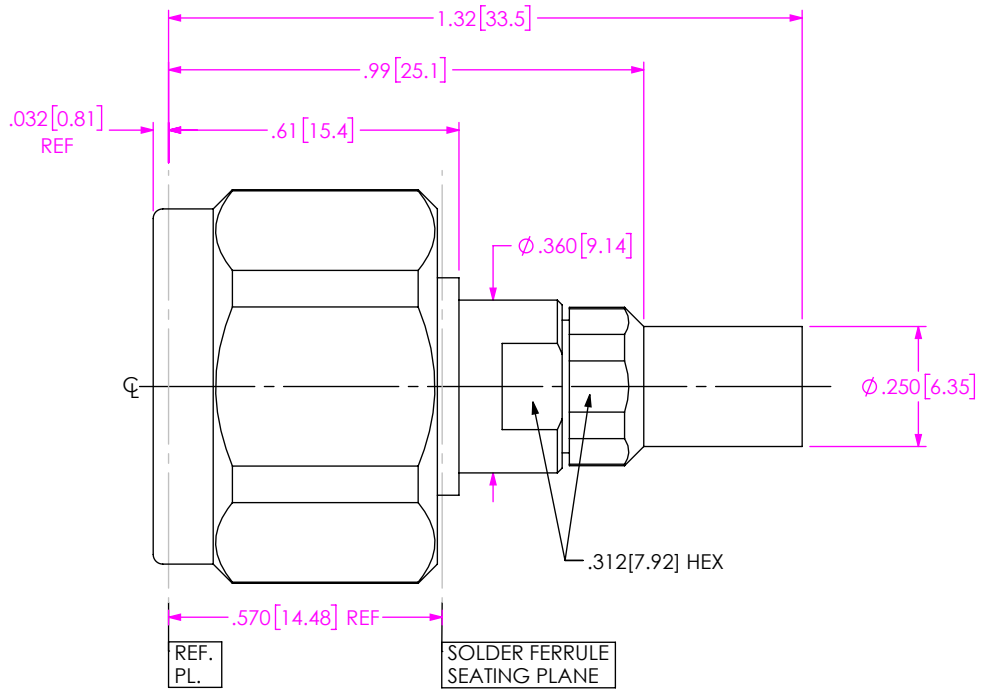
TYPE  
-C: CABLE

TERMINATION  
S: SOLDER CLAMP

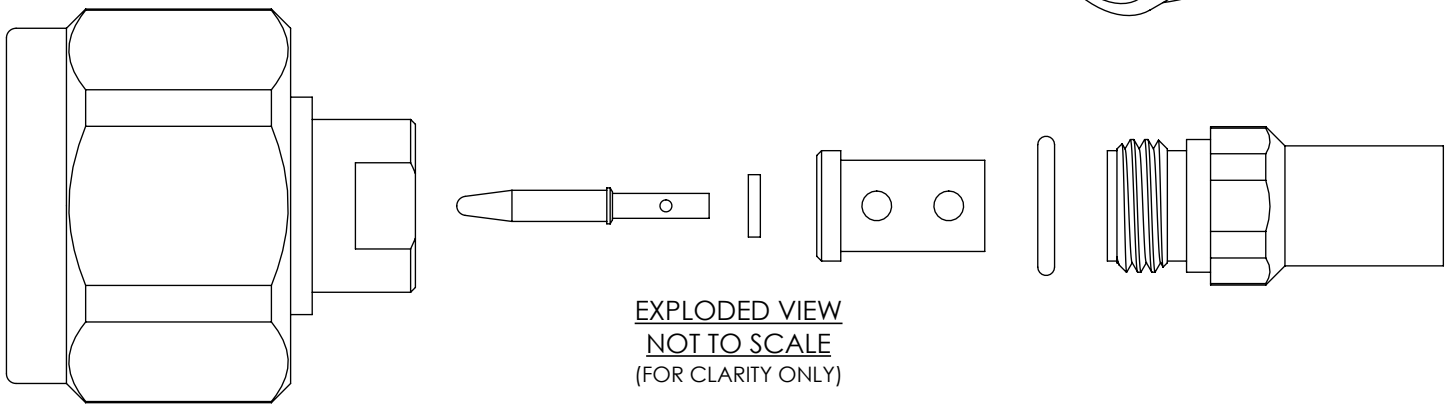
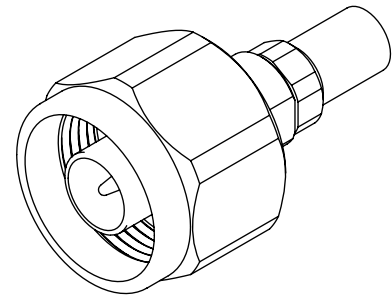
ORIENTATION  
-S: STRAIGHT

CABLE TYPE  
-142A: HARBOUR SB142

FINISH  
-EP: 50µ" EXTRA HEAVY GOLD CENTER CONTACT, PASSIVATED OUTER CONTACT



DESIGNED & DIMENSIONED IN INCHES[MILLIMETERS]



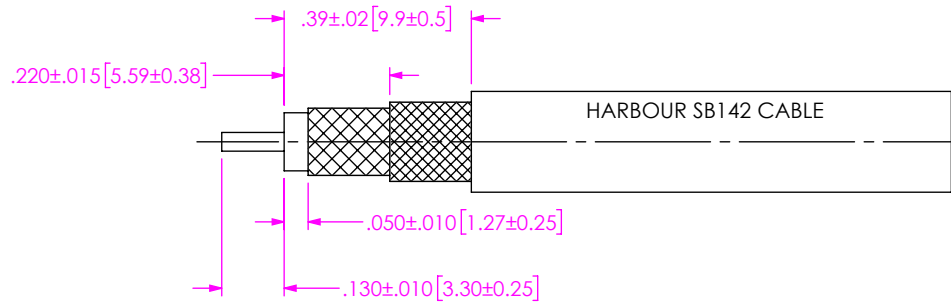
EXPLODED VIEW  
NOT TO SCALE  
(FOR CLARITY ONLY)

NOTES:

1. MATERIAL:  
BODY, BUSHING, CLAMP NUT, COUPLING NUT: STAINLESS STEEL  
CONTACT: BERYLLIUM COPPER  
SOLDER FERRULE: BRASS ALLOY  
INSULATOR: PTFE  
BEAD: PEI  
GASKET, O-RING: SILICONE RUBBER
2. FINISH:  
BODY, BUSHING, CLAMP NUT, COUPLING NUT: PASSIVATED  
CONTACT, SOLDER FERRULE: 50µ" MIN. GOLD OVER 50µ" MIN. NICKEL PLATE
3. PCI P/N: 3239

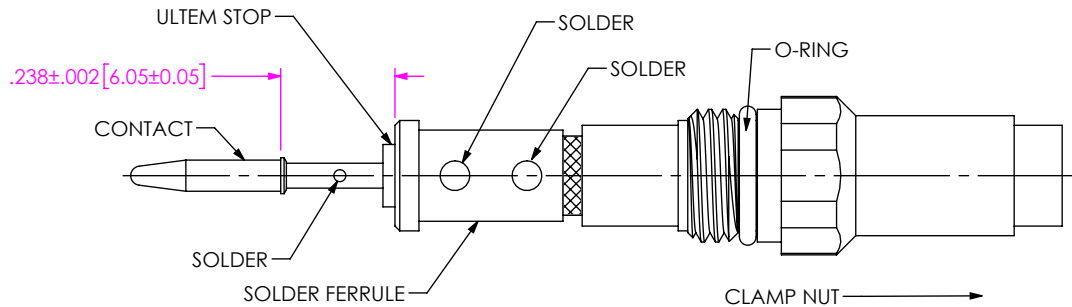
<p>UNLESS OTHERWISE SPECIFIED, DIMENSIONS ARE IN INCHES. TOLERANCES ARE:</p> <p>DECIMALS      ANGLES</p> <p>.XX: ±.01 [0.3]      1°</p> <p>.XXX: ±.005 [0.13]</p> <p>.XXXX: ±.0005 [0.013]</p>	<p><b>PROPRIETARY NOTE</b></p> <p>THIS DOCUMENT CONTAINS CONFIDENTIAL AND PROPRIETARY INFORMATION AND ALL DESIGN, MANUFACTURING, REPRODUCTION, USE, PATENT RIGHTS AND SALES RIGHTS ARE EXPRESSLY RESERVED BY SAMTEC, INC. THIS DOCUMENT SHALL NOT BE DISCLOSED, IN WHOLE OR PART, TO ANY UNAUTHORIZED PERSON OR ENTITY NOR REPRODUCED, TRANSFERRED OR INCORPORATED IN ANY OTHER PROJECT IN ANY MANNER WITHOUT THE EXPRESS WRITTEN CONSENT OF SAMTEC, INC.</p>	<p><b>samtec</b></p> <p>520 PARK EAST BLVD., NEW ALBANY, IN 47150 PHONE: 812-944-6733    FAX: 812-948-5047 e-Mail: info@SAMTEC.com    code 55322</p>	
		<p>MATERIAL: DO NOT SCALE DRAWING      SHEET SCALE: 2.5:1</p>	<p>DESCRIPTION: N PLUG SOLDER CLAMP FOR HARBOUR SB142 CABLE</p> <p>DWG. NO. <b>PRF06-P-C-EP-142A-SS</b></p> <p>BY: JESUS M    5/3/2019    SHEET 1 OF 2</p>

# CABLE APPLICATION VIEWS



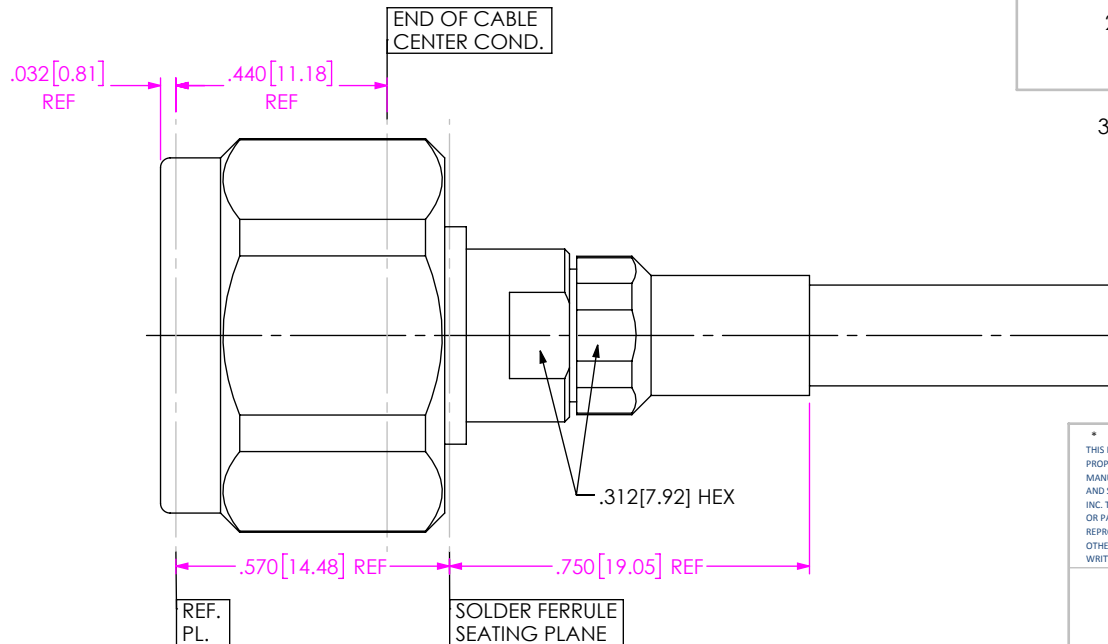
IN-PROCESS VIEW 1

1. TRIM CABLE AS SHOWN



IN-PROCESS VIEW 2

- 2A. SLIDE CLAMP NUT OVER CABLE AS SHOWN.
- 2B. INSERT CABLE INTO SOLDER FERRULE UNTIL CABLE DIELECTRIC IS FLUSH WITH FACE OF FERRULE. THEN SOLDER BOTH CABLE BRAIDS WHERE SHOWN.
- 2C. SLIDE DIELECTRIC STOP OVER CABLE CENTER CONDUCTOR AND SOLDER CONTACT FLUSH AGAINST STOP TO DIMENSION SHOWN.



- 3A. INSERT CABLE/CONTACT SUB-ASSEMBLY INTO CONNNECTOR UNTIL SEATED AND TIGHTEN CLAMP NUT TO 35-45 IN.-LBS.

IN-PROCESS VIEW 3

**PROPRIETARY NOTE**  
 THIS DOCUMENT CONTAINS CONFIDENTIAL AND PROPRIETARY INFORMATION AND ALL DESIGN, MANUFACTURING, REPRODUCTION, USE, PATENT RIGHTS AND SALES RIGHTS ARE EXPRESSLY RESERVED BY SAMTEC, INC. THIS DOCUMENT SHALL NOT BE DISCLOSED, IN WHOLE OR PART, TO ANY UNAUTHORIZED PERSON OR ENTITY NOR REPRODUCED, TRANSFERRED OR INCORPORATED IN ANY OTHER PROJECT IN ANY MANNER WITHOUT THE EXPRESS WRITTEN CONSENT OF SAMTEC, INC.



520 PARK EAST BLVD, NEW ALBANY, IN 47150  
 PHONE: 812-944-6733 FAX: 812-948-5047  
 e-Mail info@SAMTEC.com code 55322

DO NOT SCALE DRAWING

SHEET SCALE: 2.5:1

DESCRIPTION: N PLUG SOLDER CLAMP FOR HARBOUR SB142 CABLE

DWG. NO. PRF06-P-C-EP-142A-SS

BY: JESUS M 5/3/2019 SHEET 2 OF 2