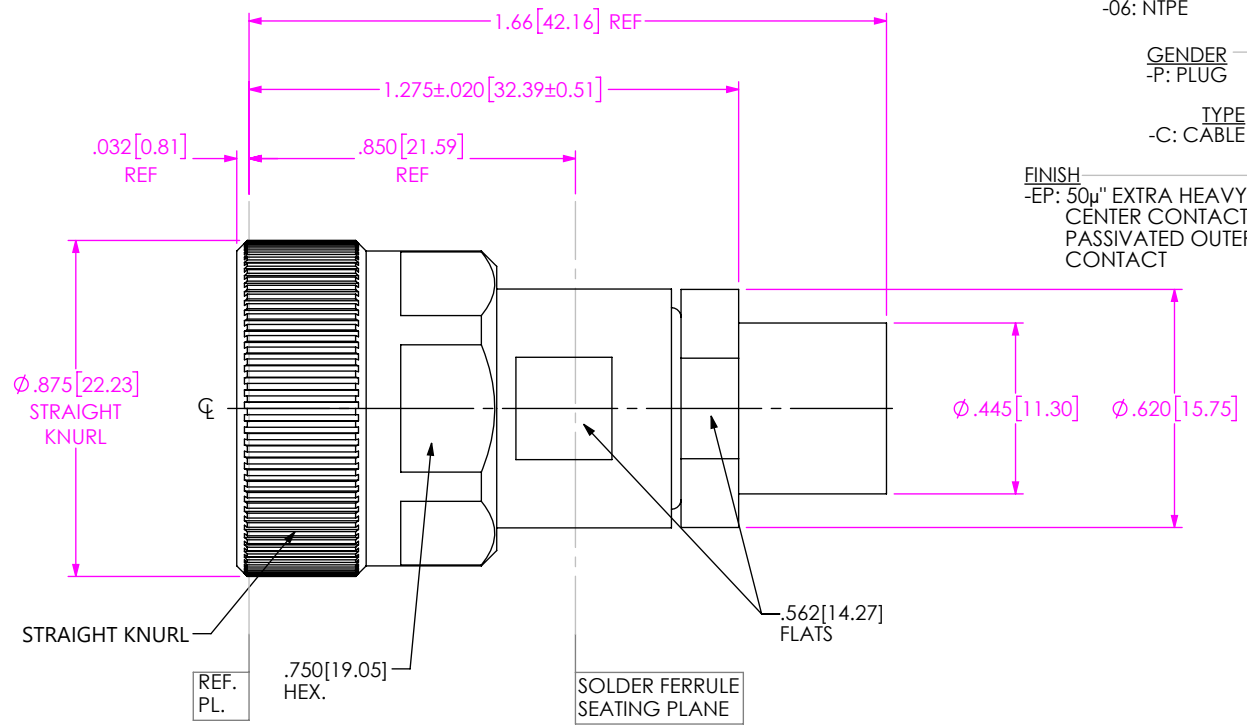


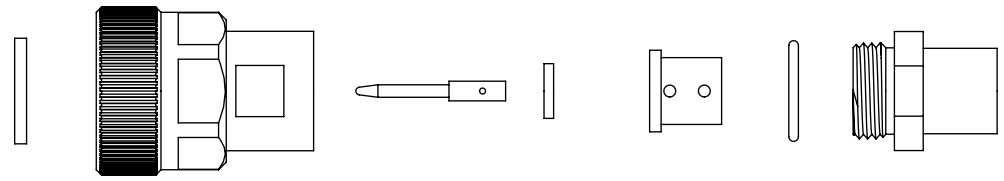
DO NOT SCALE FROM THIS PRINT

DESIGNED & DIMENSIONED IN INCHES[MILLIMETERS]

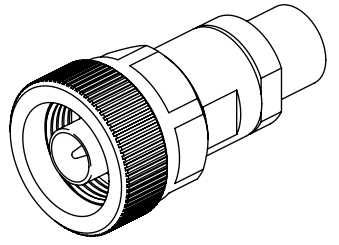
PRF06-P-C-EP-290B-SS



SERIES -06: NTPE
 GENDER -P: PLUG
 TYPE -C: CABLE
 FINISH -EP: 50µ" EXTRA HEAVY GOLD CENTER CONTACT, PASSIVATED OUTER CONTACT
 TERMINATION -S: SOLDER CLAMP
 ORIENTATION -S: STRAIGHT
 CABLE TYPE -290B: DYNAWAVE DF418W



EXPLODED VIEW
 NOT TO SCALE
 (FOR CLARITY ONLY)



NOTES:

- MATERIALS:**
 BODY, COUPLING & CLAMP NUT: STAINLESS STEEL.
 CONTACT & LOCK RING: BERYLLIUM COPPER.
 SOLDER FERRULE: BRASS.
 INSULATOR: PTFE.
 DIELECTRIC BEAD: ULTEM.
 GASKET & O-RING: SILICONE RUBBER.
- FINISH:**
 CONTACT & SOLDER FERRULE: GOLD OVER NICKEL PLATE,
 50 µ" MIN GOLD OVER 50 µIN MIN NICKEL.
 BODY, COUPLING & CLAMP NUT: PASSIVATE.
- INTERFACE:**
 TYPE N PLUG PER PCI-PNP-TL.
- PCI P/N: 3660.

c:\enterprise\vault\DWG\MISC\MKTG\PRF06-P-C-EP-290B-SS-MKT.SLDDRW

UNLESS OTHERWISE SPECIFIED, DIMENSIONS ARE IN INCHES. TOLERANCES ARE:
 DECIMALS .XX: ±.02
 .XXX: ±.005
 .XXXX: ±.0005
 ANGLES 2°

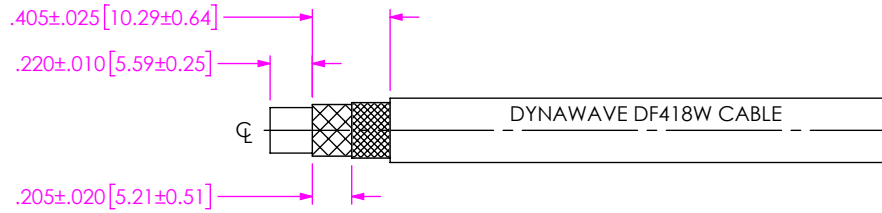
PROPRIETARY NOTE
 THIS DOCUMENT CONTAINS CONFIDENTIAL AND PROPRIETARY INFORMATION AND ALL DESIGN, MANUFACTURING, REPRODUCTION, USE, PATENT RIGHTS AND SALES RIGHTS ARE EXPRESSLY RESERVED BY SAMTEC, INC. THIS DOCUMENT SHALL NOT BE DISCLOSED, IN WHOLE OR PART, TO ANY UNAUTHORIZED PERSON OR ENTITY NOR REPRODUCED, TRANSFERRED OR INCORPORATED IN ANY OTHER PROJECT IN ANY MANNER WITHOUT THE EXPRESS WRITTEN CONSENT OF SAMTEC, INC.



520 PARK EAST BLVD, NEW ALBANY, IN 47150
 PHONE: 812-944-6733 FAX: 812-948-5047
 e-Mail info@SAMTEC.com code 55322

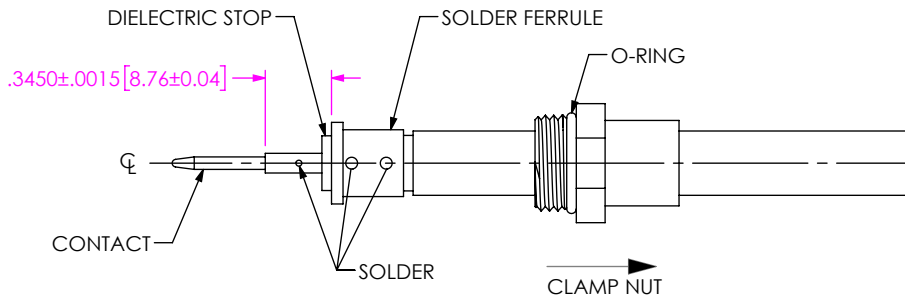
DO NOT SCALE DRAWING SHEET SCALE: 3:1

DESCRIPTION: N PLUG (18 GHZ), SOLDER CLAMP FOR DYNAWAVE DF418W CABLE, KNURL/HEX NUT
 DWG. NO. PRF06-P-C-EP-290B-SS
 BY: WILLY Y 5/8/2023 SHEET 1 OF 2



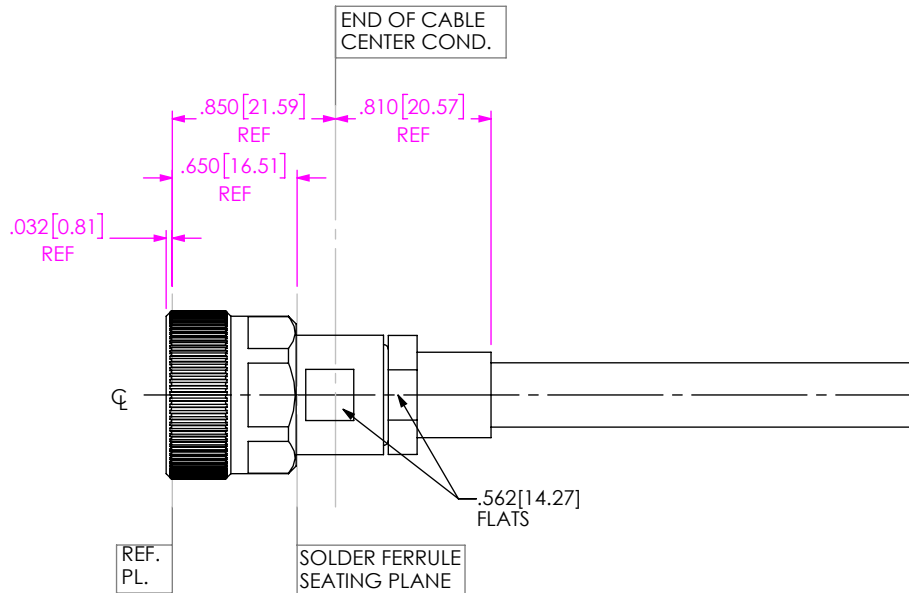
IN-PROCESS VIEW 1

1. TRIM CABLE TO EXPOSE DIELECTRIC CORE AND BRAIDS AS SHOWN.



IN-PROCESS VIEW 2

- 2A. SLIDE CLAMP NUT OVER CABLE AS SHOWN.
- 2B. INSERT CABLE INTO SOLDER FERRULE UNTIL INNER BRAID SEATS IN FERRULE, THEN SOLDER BOTH CABLE BRAIDS WHERE SHOWN.
- 2C. TRIM CABLE DIELECTRIC FLUSH WITH FACE OF FERRULE.
- 2D. SLIDE DIELECTRIC STOP OVER CABLE CENTER CONDUCTOR AND SOLDER CONTACT FLUSH AGAINST STOP TO DIMENSION SHOWN.



IN-PROCESS VIEW 3

3. INSERT CABLE/CONTACT SUB-ASSEMBLY INTO CONNECTOR UNTIL SEATED AND TIGHTEN CLAMP NUT TO 35-45 IN-LBS.

PROPRIETARY NOTE
 THIS DOCUMENT CONTAINS CONFIDENTIAL AND PROPRIETARY INFORMATION AND ALL DESIGN, MANUFACTURING, REPRODUCTION, USE, PATENT RIGHTS AND SALES RIGHTS ARE EXPRESSLY RESERVED BY SAMTEC, INC. THIS DOCUMENT SHALL NOT BE DISCLOSED, IN WHOLE OR PART, TO ANY UNAUTHORIZED PERSON OR ENTITY NOR REPRODUCED, TRANSFERRED OR INCORPORATED IN ANY OTHER PROJECT IN ANY MANNER WITHOUT THE EXPRESS WRITTEN CONSENT OF SAMTEC, INC.



520 PARK EAST BLVD, NEW ALBANY, IN 47150
 PHONE: 812-944-6733 FAX: 812-948-5047
 e-Mail: info@SAMTEC.com code 55322

DO NOT SCALE DRAWING

SHEET SCALE: 2:1

DESCRIPTION: N PLUG (18 GHZ), SOLDER CLAMP FOR DYNAWAVE DF418W CABLE, KNURL/HEX NUT

DWG. NO. PRF06-P-C-EP-290B-SS

BY: WILLY Y 5/8/2023 SHEET 2 OF 2