

DO NOT SCALE FROM THIS PRINT

PRF06-P-C-EP-300A-SS

SERIES
-06: NTPE

GENDER
-P: PLUG

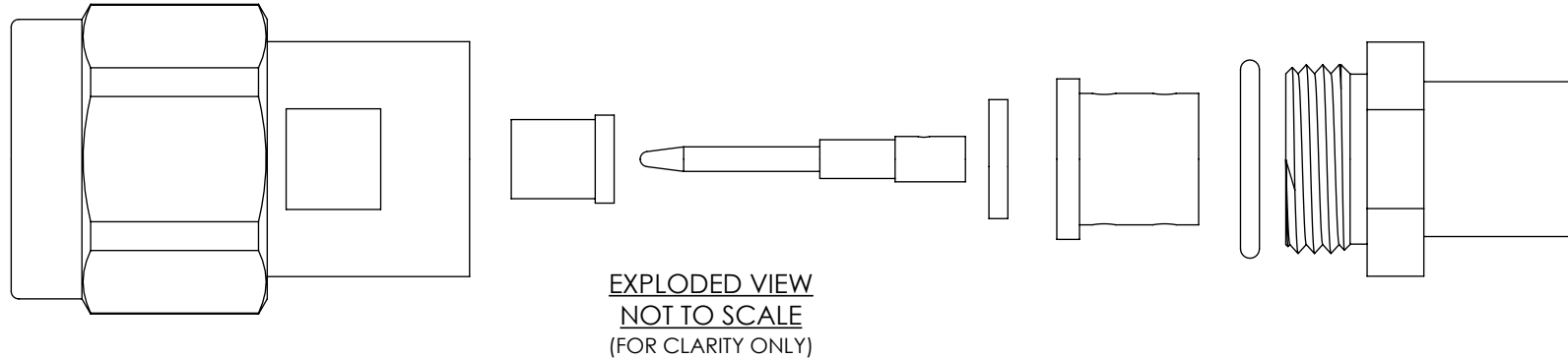
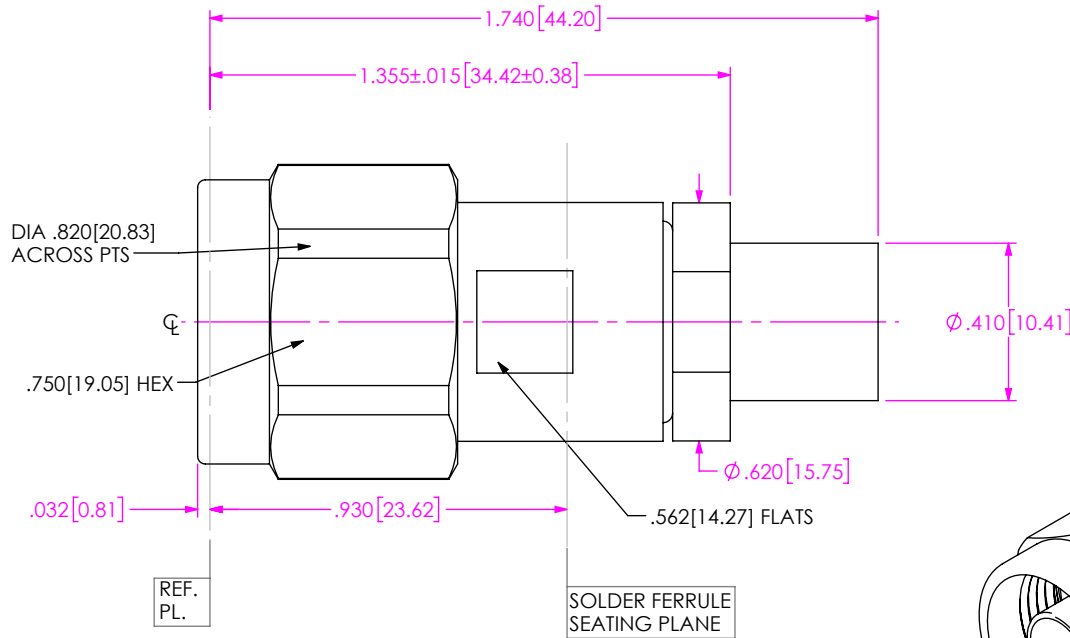
TYPE
-C: CABLE

TERMINATION
S: SOLDER CLAMP

ORIENTATION
-S: STRAIGHT

CABLE TYPE
-300A: CABLE (MAXGAIN 300)


FINISH
-EP: 50µ" EXTRA HEAVY GOLD
CENTER CONTACT, PASSIVATED
OUTER CONTACT



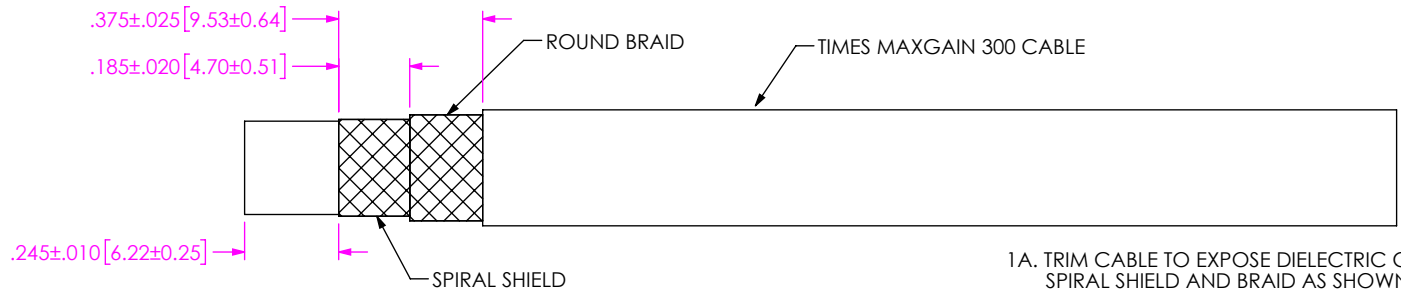
NOTES:

- MATERIAL:
 BODY, CLAMP NUT, COUPLING NUT: STAINLESS STEEL
 LOCK RING, PIN: BERYLLIUM COPPER
 SOLDER FERRULE: BRASS ALLOY
 BEAD: PEI
 INSULATOR: PTFE
 O-RING, GASKET: SILICONE RUBBER
- FINISH:
 BODY, CLAMP NUT, COUPLING NUT: PASSIVATED
 PIN, SOLDER FERRULE: 50µ" MIN. GOLD OVER 50µ" MIN. NICKEL PLATE
- PCI P/N: 3950

F:\DWG\MISC\MKTG\PRF06-P-C-EP-300A-SS-MKT.SLDDRW

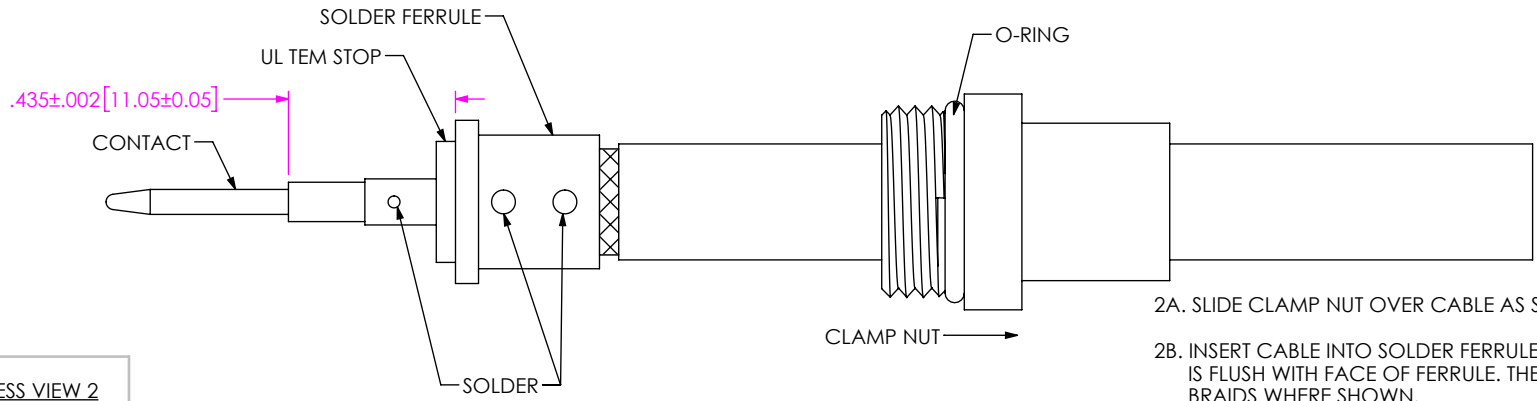
UNLESS OTHERWISE SPECIFIED, DIMENSIONS ARE IN INCHES. TOLERANCES ARE: DECIMALS ANGLES .XX: ±.02[0.5] 1° .XXX: ±.005[0.13] .XXXX: ±.0005[0.013]	* PROPRIETARY NOTE * THIS DOCUMENT CONTAINS CONFIDENTIAL AND PROPRIETARY INFORMATION AND ALL DESIGN, MANUFACTURING, REPRODUCTION, USE, PATENT RIGHTS AND SALES RIGHTS ARE EXPRESSLY RESERVED BY SAMTEC, INC. THIS DOCUMENT SHALL NOT BE DISCLOSED, IN WHOLE OR PART, TO ANY UNAUTHORIZED PERSON OR ENTITY NOR REPRODUCED, TRANSFERRED OR INCORPORATED IN ANY OTHER PROJECT IN ANY MANNER WITHOUT THE EXPRESS WRITTEN CONSENT OF SAMTEC, INC.	 520 PARK EAST BLVD, NEW ALBANY, IN 47150 PHONE: 812-944-6733 FAX: 812-948-5047 e-Mail: info@SAMTEC.com code 55322
		MATERIAL: DO NOT SCALE DRAWING SHEET SCALE: 2:1

CABLE APPLICATION VIEWS



IN-PROCESS VIEW 1

1A. TRIM CABLE TO EXPOSE DIELECTRIC CORE SPIRAL SHIELD AND BRAID AS SHOWN.

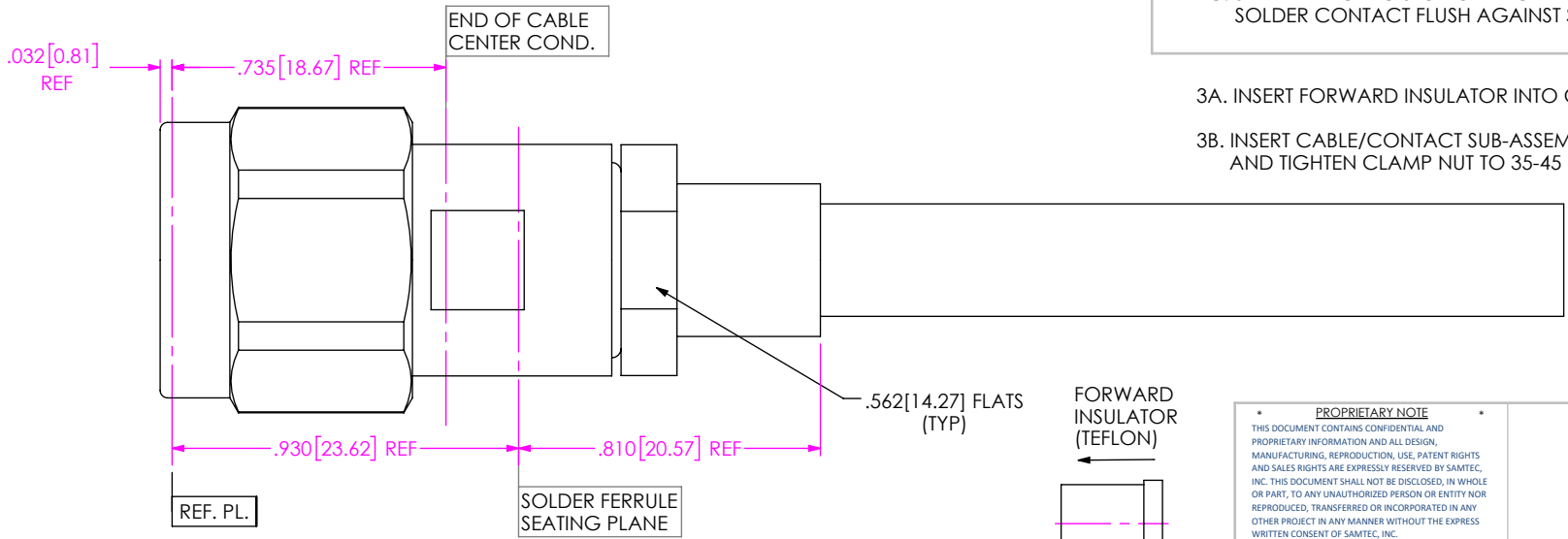


IN-PROCESS VIEW 2

2A. SLIDE CLAMP NUT OVER CABLE AS SHOWN.

2B. INSERT CABLE INTO SOLDER FERRULE UNTIL CABLE DIELECTRIC IS FLUSH WITH FACE OF FERRULE. THEN SOLDER BOTH CABLE BRAIDS WHERE SHOWN.

2C. SLIDE DIELECTRIC STOP OVER CABLE CENTER CONDUCTOR AND SOLDER CONTACT FLUSH AGAINST STOP TO DIMENSION SHOWN.



IN-PROCESS VIEW 3

3A. INSERT FORWARD INSULATOR INTO CONNECTOR IN ORIENTATION SHOWN.

3B. INSERT CABLE/CONTACT SUB-ASSEMBLY INTO CONNECTOR UNTIL SEATED AND TIGHTEN CLAMP NUT TO 35-45 IN-LBS.

PROPRIETARY NOTE
 THIS DOCUMENT CONTAINS CONFIDENTIAL AND PROPRIETARY INFORMATION AND ALL DESIGN, MANUFACTURING, REPRODUCTION, USE, PATENT RIGHTS AND SALES RIGHTS ARE EXPRESSLY RESERVED BY SAMTEC, INC. THIS DOCUMENT SHALL NOT BE DISCLOSED, IN WHOLE OR PART, TO ANY UNAUTHORIZED PERSON OR ENTITY NOR REPRODUCED, TRANSFERRED OR INCORPORATED IN ANY OTHER PROJECT IN ANY MANNER WITHOUT THE EXPRESS WRITTEN CONSENT OF SAMTEC, INC.



520 PARK EAST BLVD, NEW ALBANY, IN 47150
 PHONE: 812-944-6733 FAX: 812-948-5047
 e-Mail: info@SAMTEC.com code 55322

DO NOT SCALE DRAWING

SHEET SCALE: 2:1

DESCRIPTION: N PLUG (18 GHZ), SOLDER CLAMP FOR TIMES MAXGAIN 300 CABLE

DWG. NO. PRF06-P-C-EP-300A-SS

BY: HENSON T 05/17/2019 SHEET 2 OF 2