

DESIGNED & DIMENSIONED
IN INCHES[MILLIMETERS]

DO NOT
SCALE FROM
THIS PRINT

PRF06-P-C-EP-335-RS-1

SERIES
-06: NTPC

GENDER
-P: PLUG

TYPE
-C: CABLE

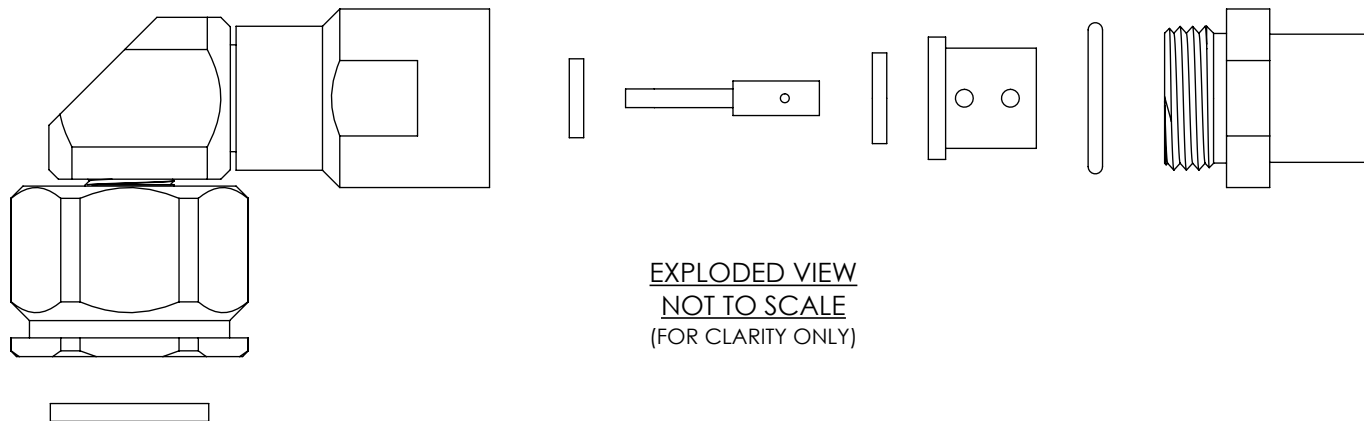
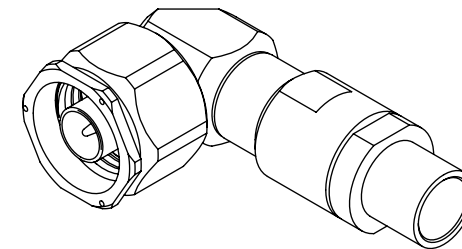
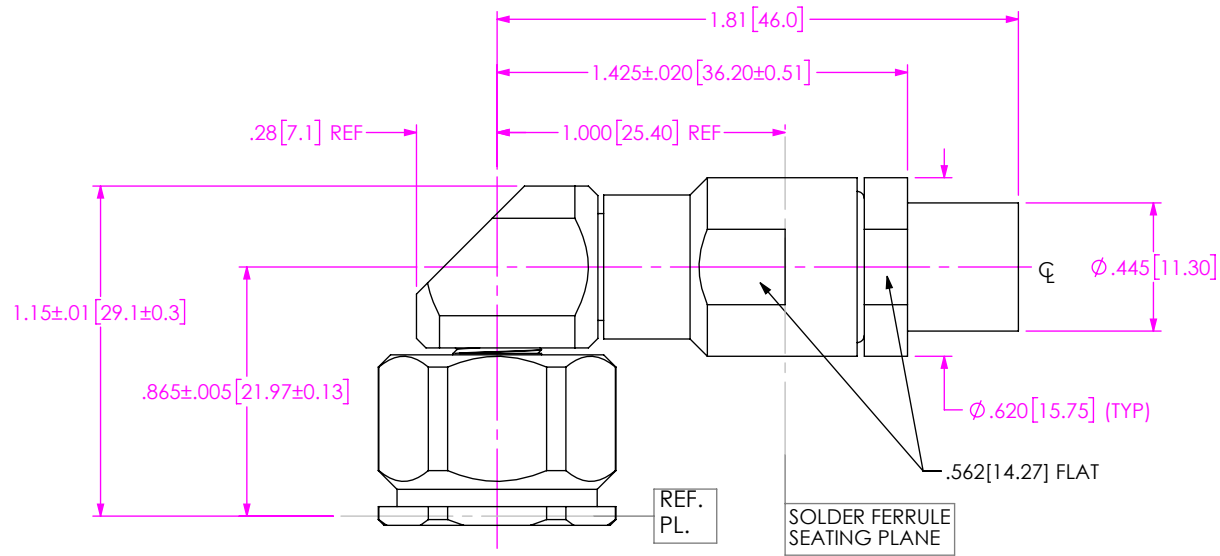
FINISH
-EP: 50µ" EXTRA HEAVY GOLD
CENTER CONTACT, PASSIVATED
OUTER CONTACT

OPTION
-1

TERMINATION
-S: SOLDER CLAMP

ORIENTATION
-R: RIGHT ANGLE

CABLE TYPE
-335: HARBOUR LL335



EXPLODED VIEW
NOT TO SCALE
(FOR CLARITY ONLY)

NOTES:

1. MATERIAL:
BODIES, COUPLING NUT, CLAMP NUT: STAINLESS STEEL.
CONTACTS: BERYLLIUM COPPER.
SOLDER FERRULE: BRASS ALLOY.
INSULATORS: PTFE.
BEADS: PEI.
GASKET, O-RING: SILICONE RUBBER.
2. FINISH:
BODIES, COUPLING NUT, CLAMP NUT: PASSIVATED
CONTACTS: 50µ" MIN. GOLD OVER 50µ" MIN. NICKEL PLATE
SOLDER FERRULE: 10µ" MIN. GOLD OVER 50µ" MIN. NICKEL PLATE
3. PCI P/N: 3270-X

UNLESS OTHERWISE SPECIFIED,
DIMENSIONS ARE IN INCHES.
TOLERANCES ARE:
DECIMALS ANGLES
.XX: ±.01 [0.3] 1°
.XXX: ±.005 [0.13]
.XXXX: ±.0005 [0.013]

PROPRIETARY NOTE
* THIS DOCUMENT CONTAINS CONFIDENTIAL AND PROPRIETARY INFORMATION AND ALL DESIGN, MANUFACTURING, REPRODUCTION, USE, PATENT RIGHTS AND SALES RIGHTS ARE EXPRESSLY RESERVED BY SAMTEC, INC. THIS DOCUMENT SHALL NOT BE DISCLOSED, IN WHOLE OR PART, TO ANY UNAUTHORIZED PERSON OR ENTITY NOR REPRODUCED, TRANSFERRED OR INCORPORATED IN ANY OTHER PROJECT IN ANY MANNER WITHOUT THE EXPRESS WRITTEN CONSENT OF SAMTEC, INC.



520 PARK EAST BLVD, NEW ALBANY, IN 47150
PHONE: 812-944-6733 FAX: 812-948-5047
e-Mail info@SAMTEC.com code 55322

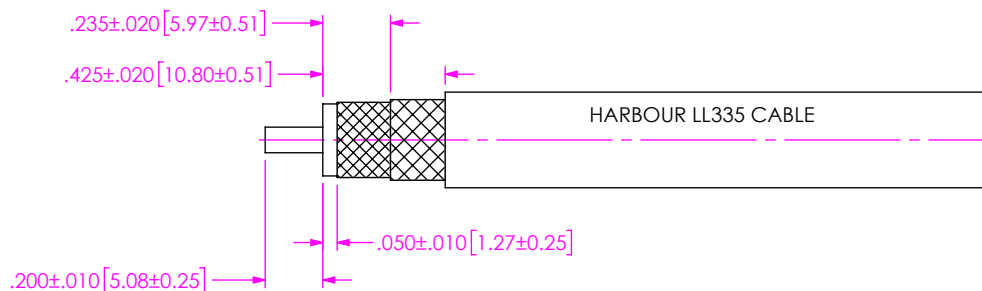
DO NOT SCALE DRAWING

SHEET SCALE: 3:2

DESCRIPTION: TYPE N RA PLUG, SOLDER CLAMP
FOR HARBOUR LL335 CABLE

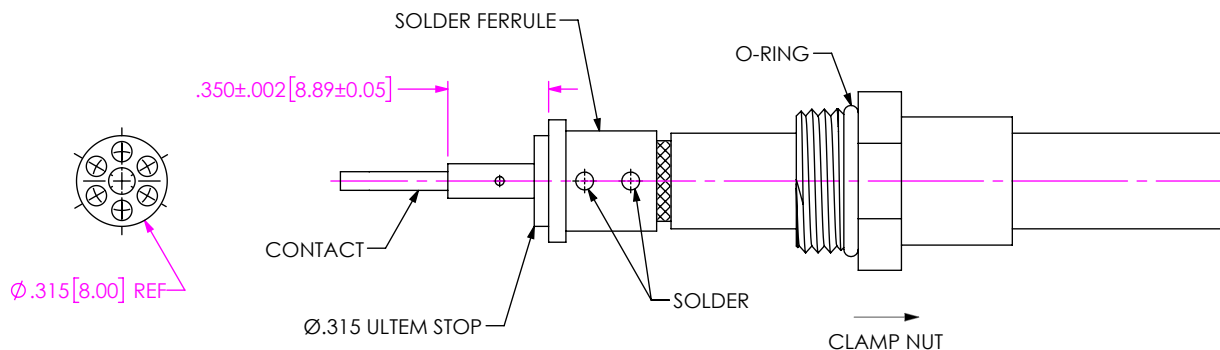
DWG. NO. PRF06-P-C-EP-335-RS-1

BY: EVE L 08/19/2021 SHEET 1 OF 3



1. TRIM CABLE AS SHOWN

IN-PROCESS 1



2A. SLIDE CLAMP NUT OVER CABLE AS SHOWN.

2B. INSERT CABLE INTO SOLDER FERRULE UNTIL CABLE DIELECTRIC IS FLUSH WITH FACE OF FERRULE. THEN SOLDER BOTH CABLE BRAIDS WHERE SHOWN.

2C. SLIDE Ø.315 ULTEM STOP OVER CABLE CENTER CONDUCTORS AND SOLDER CONTACT FLUSH AGAINST STOP TO DIMENSION SHOWN

IN-PROCESS 2

PROPRIETARY NOTE
 THIS DOCUMENT CONTAINS CONFIDENTIAL AND PROPRIETARY INFORMATION AND ALL DESIGN, MANUFACTURING, REPRODUCTION, USE, PATENT RIGHTS AND SALES RIGHTS ARE EXPRESSLY RESERVED BY SAMTEC, INC. THIS DOCUMENT SHALL NOT BE DISCLOSED, IN WHOLE OR PART, TO ANY UNAUTHORIZED PERSON OR ENTITY NOR REPRODUCED, TRANSFERRED OR INCORPORATED IN ANY OTHER PROJECT IN ANY MANNER WITHOUT THE EXPRESS WRITTEN CONSENT OF SAMTEC, INC.



520 PARK EAST BLVD, NEW ALBANY, IN 47150
 PHONE: 812-944-6733 FAX: 812-948-5047
 e-Mail info@SAMTEC.com code 55322

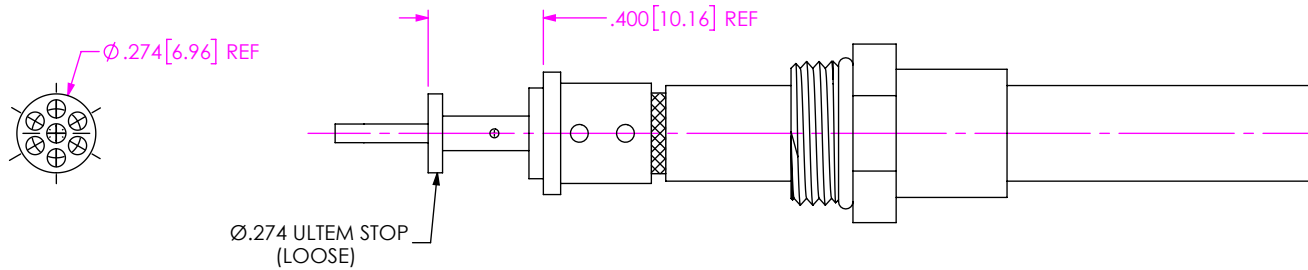
DO NOT SCALE DRAWING

SHEET SCALE: 3:2

DESCRIPTION: TYPE N RA PLUG, SOLDER CLAMP FOR HARBOUR LL335 CABLE

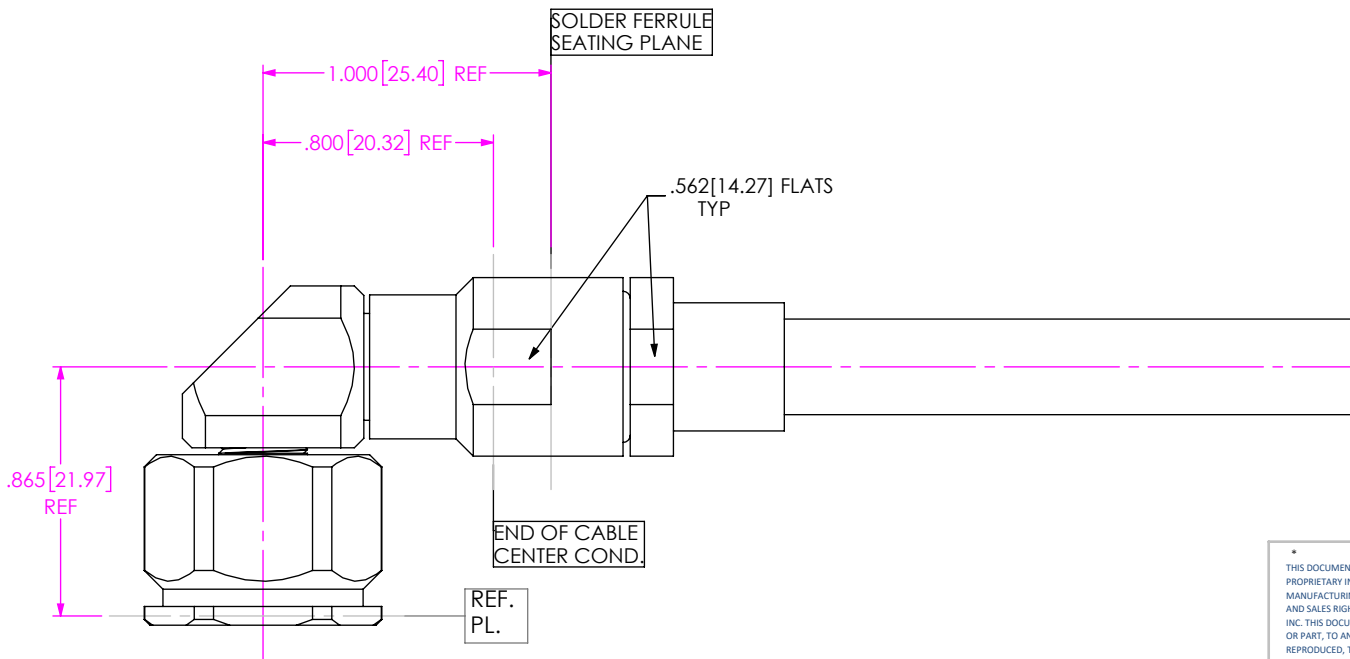
DWG. NO. PRF06-P-C-EP-335-RS-1

BY: EVE L 08/19/2021 SHEET 2 OF 3



3. SLIDE Ø.274 ULTEM STOP OVER CONTACT AGAINST SHOULDER AS SHOWN.

IN-PROCESS 3



4. INSERT CABLE/CONTACT SUB-ASSEMBLY INTO CONNECTOR UNTIL SEATED AND TIGHTEN CLAMP NUT TO 35-45 IN-LBS.

IN-PROCESS 4

PROPRIETARY NOTE
 THIS DOCUMENT CONTAINS CONFIDENTIAL AND PROPRIETARY INFORMATION AND ALL DESIGN, MANUFACTURING, REPRODUCTION, USE, PATENT RIGHTS AND SALES RIGHTS ARE EXPRESSLY RESERVED BY SAMTEC, INC. THIS DOCUMENT SHALL NOT BE DISCLOSED, IN WHOLE OR PART, TO ANY UNAUTHORIZED PERSON OR ENTITY NOR REPRODUCED, TRANSFERRED OR INCORPORATED IN ANY OTHER PROJECT IN ANY MANNER WITHOUT THE EXPRESS WRITTEN CONSENT OF SAMTEC, INC.



520 PARK EAST BLVD, NEW ALBANY, IN 47150
 PHONE: 812-944-6733 FAX: 812-948-5047
 e-Mail info@SAMTEC.com code 55322

DO NOT SCALE DRAWING

SHEET SCALE: 3:2

DESCRIPTION: TYPE N RA PLUG, SOLDER CLAMP FOR HARBOUR LL335 CABLE

DWG. NO. PRF06-P-C-EP-335-RS-1

BY: EVE L 08/19/2021 SHEET 3 OF 3