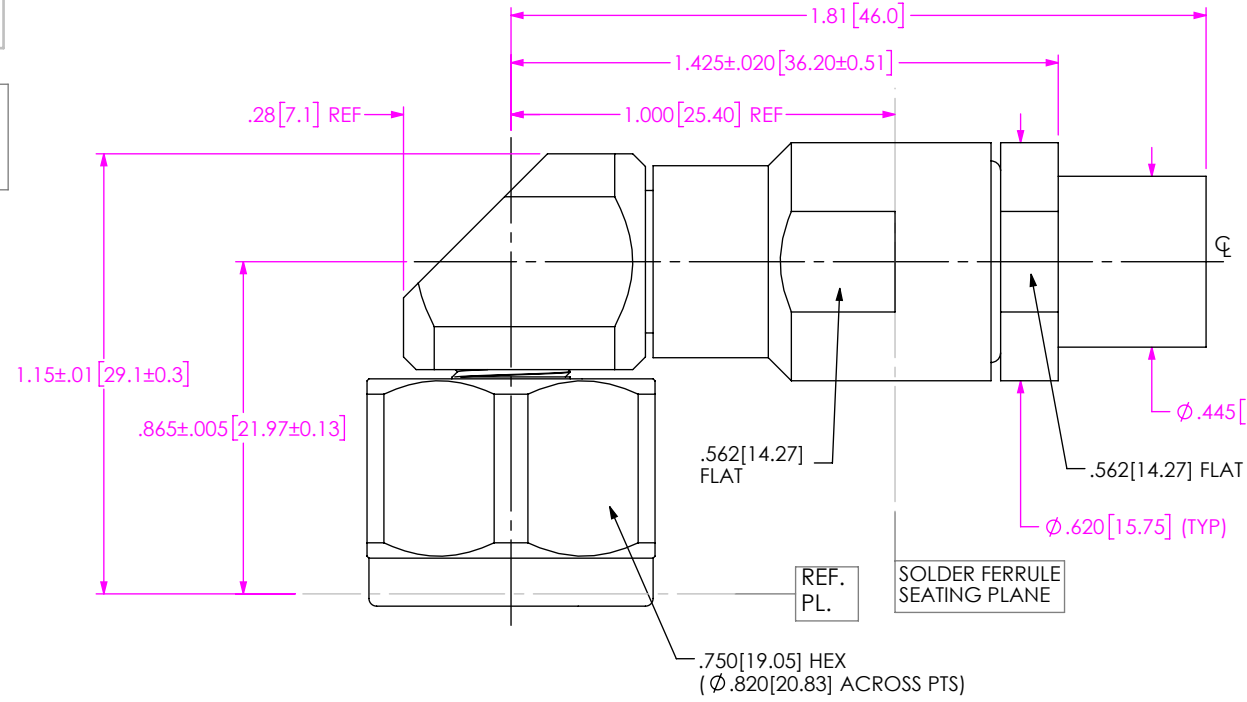


DO NOT SCALE FROM THIS PRINT



**PRF06-P-C-EP-335-RS**

SERIES  
 -06: NTPE

GENDER  
 -P: PLUG

TYPE  
 -C: CABLE

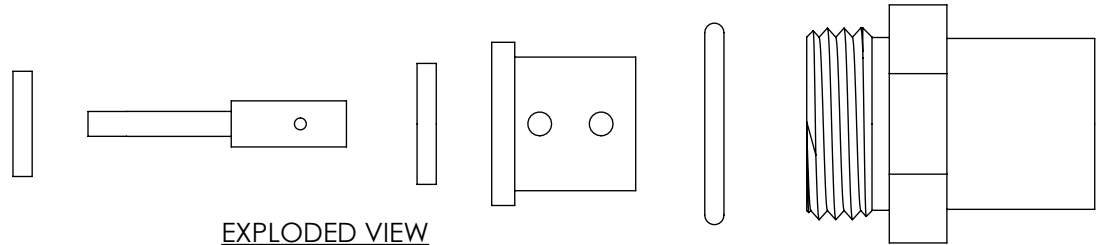
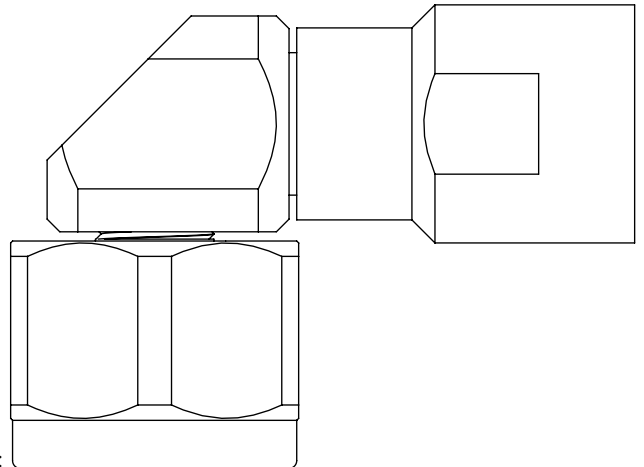
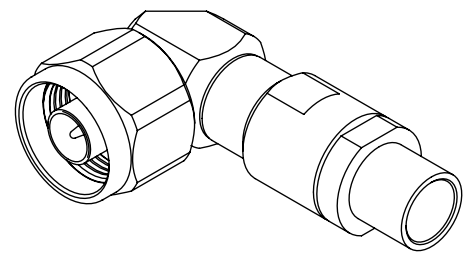
FINISH  
 -EP: 50µ" EXTRA HEAVY GOLD  
 CENTER CONTACT, PASSIVATED  
 OUTER CONTACT

TERMINATION  
 -S: SOLDER CLAMP

ORIENTATION  
 -R: RIGHT ANGLE

CABLE TYPE  
 -335: HARBOUR LL335

**DESIGNED & DIMENSIONED  
 IN INCHES[MILLIMETERS]**



**EXPLODED VIEW  
 NOT TO SCALE  
 (FOR CLARITY ONLY)**

NOTES:

- MATERIAL:**  
 BODIES, COUPLING NUT, CLAMP NUT: STAINLESS STEEL  
 CONTACTS: BERYLLIUM COPPER  
 SOLDER FERRULE: BRASS ALLOY  
 INSULATORS: PTFE  
 BEADS: PEI  
 GASKET, O-RING: SILICONE RUBBER
- FINISH:**  
 BODIES, COUPLING NUT, CLAMP NUT: PASSIVATED  
 CONTACTS, SOLDER FERRULE: 50µ" MIN. GOLD OVER 50µ" MIN. NICKEL PLATE
- PERFORMANCE:**  
 IMPEDANCE: 50 Ω  
 FREQUENCY: DC TO 18 GHZ  
 VSWR: 1.16:1 MAXIMUM  
 INSERTION LOSS: 0.05 X √F(GHZ)  
 DWV: 1500 VRMS
- PCI P/N: 3270**

UNLESS OTHERWISE SPECIFIED,  
 DIMENSIONS ARE IN INCHES.  
 TOLERANCES ARE:  
 DECIMALS ANGLES  
 .XX: ±.01 [0.3] 1°  
 .XXX: ±.005 [0.13]  
 .XXXX: ±.0005 [0.013]

**PROPRIETARY NOTE**  
 THIS DOCUMENT CONTAINS CONFIDENTIAL AND PROPRIETARY INFORMATION AND ALL DESIGN, MANUFACTURING, REPRODUCTION, USE, PATENT RIGHTS AND SALES RIGHTS ARE EXPRESSLY RESERVED BY SAMTEC, INC. THIS DOCUMENT SHALL NOT BE DISCLOSED, IN WHOLE OR PART, TO ANY UNAUTHORIZED PERSON OR ENTITY NOR REPRODUCED, TRANSFERRED OR INCORPORATED IN ANY OTHER PROJECT IN ANY MANNER WITHOUT THE EXPRESS WRITTEN CONSENT OF SAMTEC, INC.



520 PARK EAST BLVD., NEW ALBANY, IN 47150  
 PHONE: 812-944-6733 FAX: 812-948-5047  
 e-Mail: info@SAMTEC.com code 55322

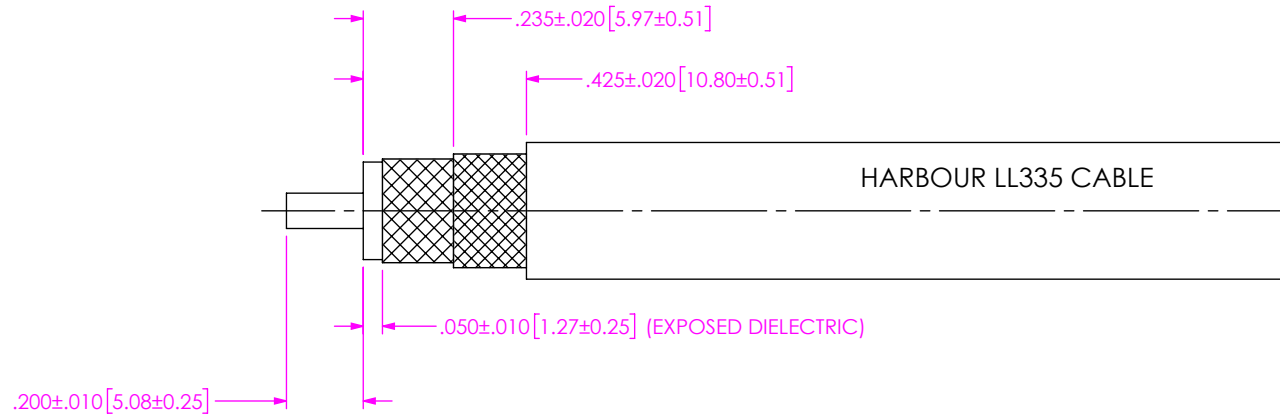
DO NOT SCALE DRAWING SHEET SCALE: 2:1

DESCRIPTION: TYPE N RA PLUG, SOLDER CLAMP FOR HARBOUR LL335 CABLE

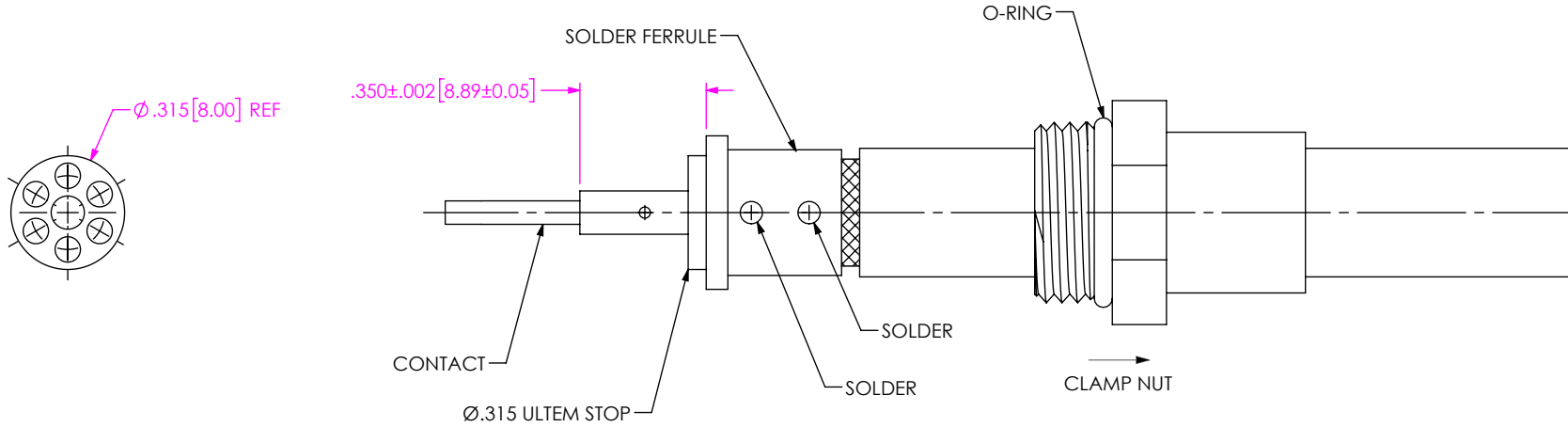
DWG. NO. PRF06-P-C-EP-335-RS

BY: JESUS M 5/8/2019 SHEET 1 OF 3

1. TRIM CABLE AS SHOWN



IN-PROCESS VIEW 1



- 2A. SLIDE CLAMP NUT OVER CABLE AS SHOWN.
- 2B. INSERT CABLE INTO SOLDER FERRULE UNTIL CABLE DIELECTRIC IS FLUSH WITH FACE OF FERRULE. THEN SOLDER BOTH CABLE BRAIDS WHERE SHOWN.
- 2C. SLIDE Ø.315 ULTEM STOP OVER CABLE CENTER CONDUCTORS AND SOLDER CONTACT FLUSH AGAINST STOP TO DIMENSION SHOWN

IN-PROCESS VIEW 2

**PROPRIETARY NOTE**  
 THIS DOCUMENT CONTAINS CONFIDENTIAL AND PROPRIETARY INFORMATION AND ALL DESIGN, MANUFACTURING, REPRODUCTION, USE, PATENT RIGHTS AND SALES RIGHTS ARE EXPRESSLY RESERVED BY SAMTEC, INC. THIS DOCUMENT SHALL NOT BE DISCLOSED, IN WHOLE OR PART, TO ANY UNAUTHORIZED PERSON OR ENTITY NOR REPRODUCED, TRANSFERRED OR INCORPORATED IN ANY OTHER PROJECT IN ANY MANNER WITHOUT THE EXPRESS WRITTEN CONSENT OF SAMTEC, INC.



520 PARK EAST BLVD, NEW ALBANY, IN 47150  
 PHONE: 812-944-6733 FAX: 812-948-5047  
 e-Mail: info@SAMTEC.com code 55322

DO NOT SCALE DRAWING

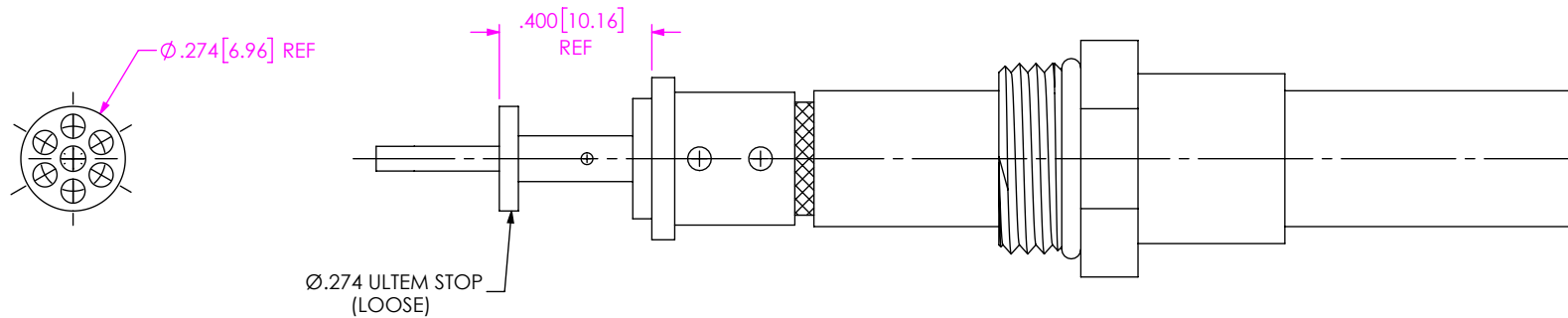
SHEET SCALE: 2:1

DESCRIPTION: TYPE N RA PLUG, SOLDER CLAMP FOR HARBOUR LL355 CABLE

DWG. NO. PRF06-P-C-EP-335-RS

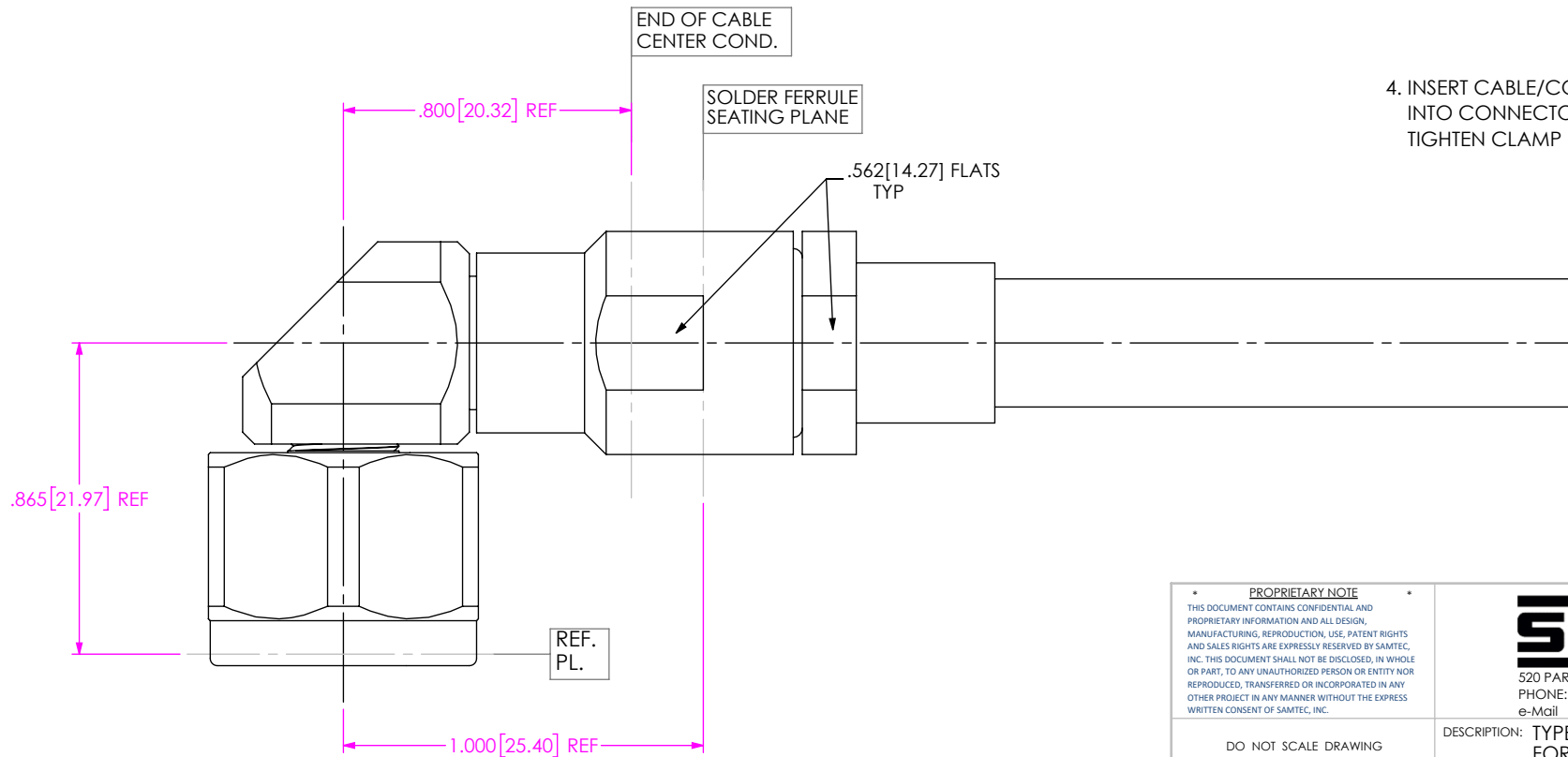
BY: JESUS M 5/8/2019 SHEET 2 OF 3

# CABLE APPLICATION VIEWS



3. SLIDE Ø.274 ULTEM STOP OVER CONTACT AGAINST SHOULDER AS SHOWN.

IN-PROCESS VIEW 3



4. INSERT CABLE/CONTACT SUB-ASSEMBLY INTO CONNECTOR UNTIL SEATED AND TIGHTEN CLAMP NUT TO 35-45 IN-LBS.

IN-PROCESS VIEW 4

**PROPRIETARY NOTE**  
 THIS DOCUMENT CONTAINS CONFIDENTIAL AND PROPRIETARY INFORMATION AND ALL DESIGN, MANUFACTURING, REPRODUCTION, USE, PATENT RIGHTS AND SALES RIGHTS ARE EXPRESSLY RESERVED BY SAMTEC, INC. THIS DOCUMENT SHALL NOT BE DISCLOSED, IN WHOLE OR PART, TO ANY UNAUTHORIZED PERSON OR ENTITY NOR REPRODUCED, TRANSFERRED OR INCORPORATED IN ANY OTHER PROJECT IN ANY MANNER WITHOUT THE EXPRESS WRITTEN CONSENT OF SAMTEC, INC.



520 PARK EAST BLVD, NEW ALBANY, IN 47150  
 PHONE: 812-944-6733 FAX: 812-948-5047  
 e-Mail info@SAMTEC.com code 55322

DO NOT SCALE DRAWING

SHEET SCALE: 2:1

DESCRIPTION: TYPE N RA PLUG, SOLDER CLAMP FOR HARBOUR LL335 CABLE

DWG. NO. PRF06-P-C-EP-335-RS

BY: JESUS M 5/8/2019 SHEET 3 OF 3