

DESIGNED & DIMENSIONED
IN INCHES[MILLIMETERS]

PRF06-P-C-EP-335A-RS

DO NOT
SCALE FROM
THIS PRINT

SERIES
-06: NTPE

GENDER
-P: PLUG

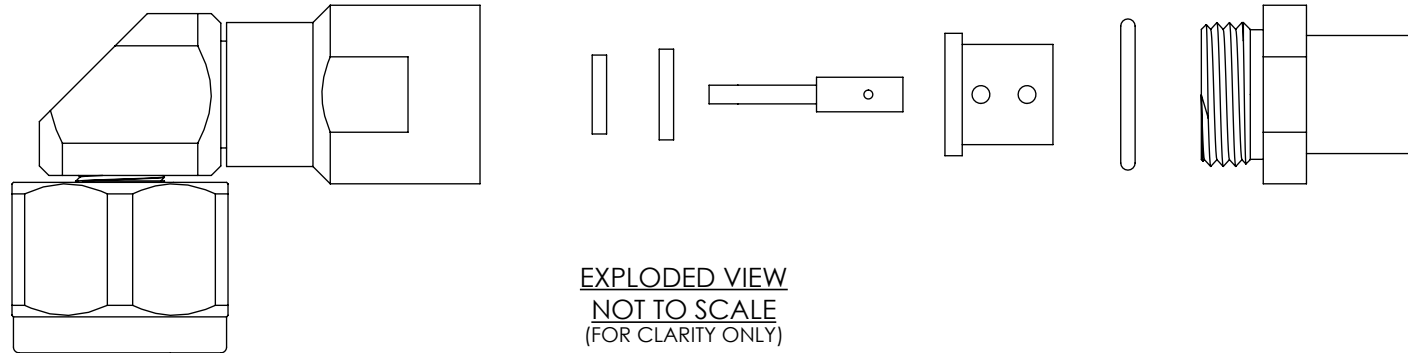
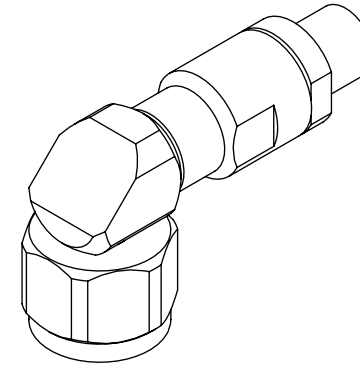
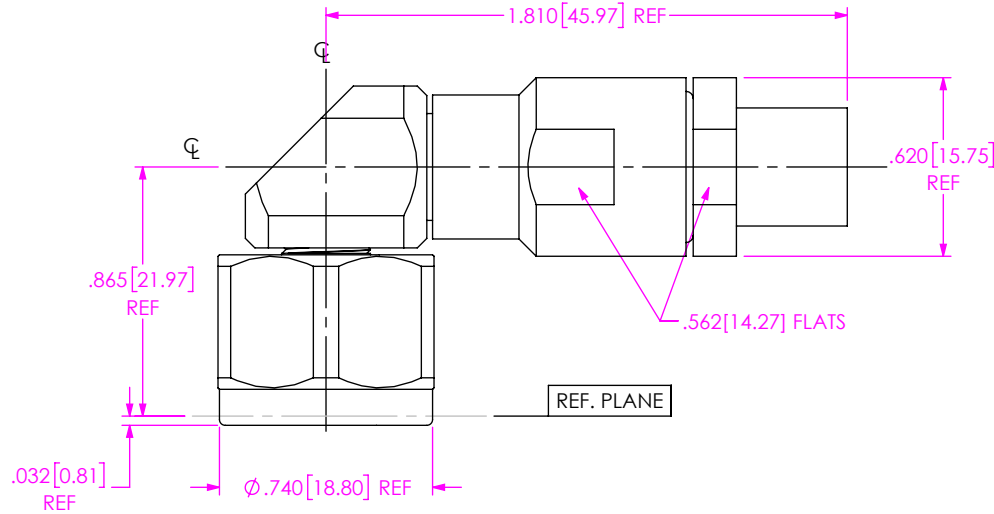
TYPE
-C: CABLE

FINISH
-EP: 50µ" EXTRA HEAVY GOLD
CENTER CONTACT, PASSIVATED
OUTER CONTACT

TERMINATION
-S: SOLDER CLAMP

ORIENTATION
-R: RIGHT ANGLE

CABLE TYPE
-335A: HARBOUR LL335I



EXPLODED VIEW
NOT TO SCALE
(FOR CLARITY ONLY)

NOTES:

- MATERIAL:
BODY, COUPLING & CLAMP NUTS: STAINLESS STEEL.
SOCKET: BERYLLIUM COPPER.
SOLDER FERRULE: BRASS.
GASKET & O-RING: SILICONE RUBBER.
INSULATORS: PTFE.
DIELECTRIC BEADS: ULTEM 1000.
- FINISH:
BODY, COUPLING & CLAMP NUTS: PASSIVATED.
CONTACT: 50µ" MIN. GOLD OVER 50µ" MIN. NICKEL PLATE.
SOLDER FERRULE: 10µ" MIN. GOLD OVER 50µ" MIN. NICKEL PLATE.
- PCI P/N: 3563.

UNLESS OTHERWISE SPECIFIED,
DIMENSIONS ARE IN INCHES.
TOLERANCES ARE:
DECIMALS ANGLES
.XX: ±.01 [0.3] 1°
.XXX: ±.005 [0.13]
.XXXX: ±.0005 [0.013]

PROPRIETARY NOTE
THIS DOCUMENT CONTAINS CONFIDENTIAL AND
PROPRIETARY INFORMATION AND ALL DESIGN,
MANUFACTURING, REPRODUCTION, USE, PATENT RIGHTS
AND SALES RIGHTS ARE EXPRESSLY RESERVED BY SAMTEC,
INC. THIS DOCUMENT SHALL NOT BE DISCLOSED, IN WHOLE
OR PART, TO ANY UNAUTHORIZED PERSON OR ENTITY NOR
REPRODUCED, TRANSFERRED OR INCORPORATED IN ANY
OTHER PROJECT IN ANY MANNER WITHOUT THE EXPRESS
WRITTEN CONSENT OF SAMTEC, INC.



520 PARK EAST BLVD, NEW ALBANY, IN 47150
PHONE: 812-944-6733 FAX: 812-948-5047
e-Mail: info@SAMTEC.com code 55322

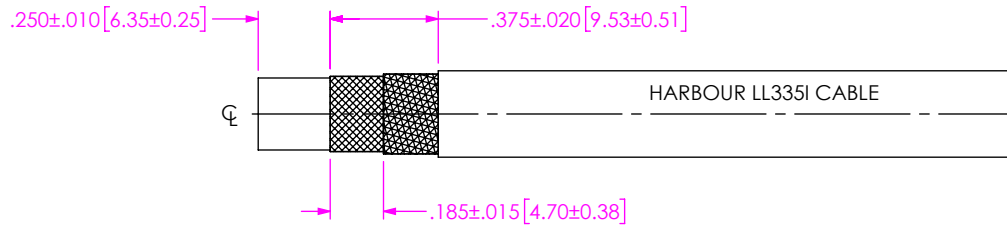
DO NOT SCALE DRAWING

SHEET SCALE: 1.5:1

DESCRIPTION: NTPE RA PLUG, SOLDER CLAMP FOR
HARBOUR LL335I CABLE

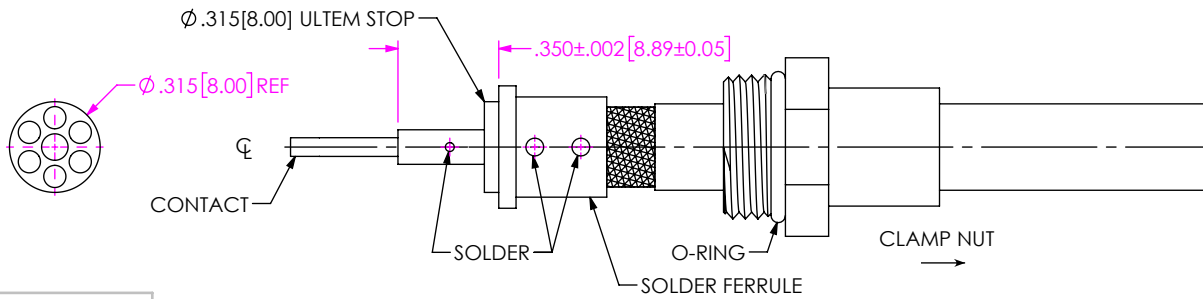
DWG. NO. PRF06-P-C-EP-335A-RS

BY: SAMUEL C 07/24/2020 SHEET 1 OF 2



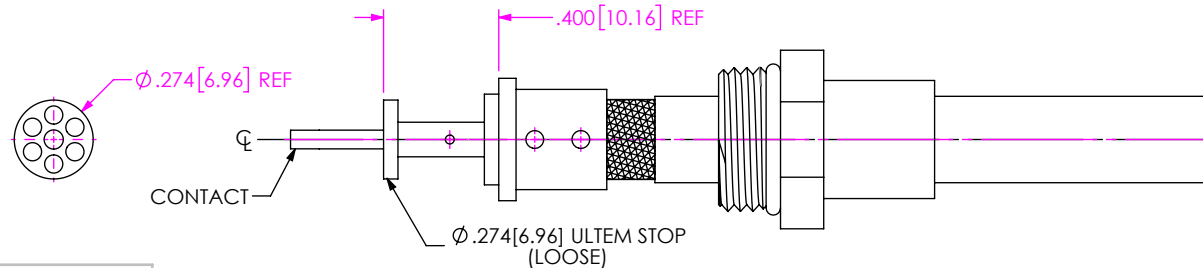
1. TRIM CABLE TO EXPOSE BRAIDS AND DIELECTRIC AS SHOWN.

IN-PROCESS 1



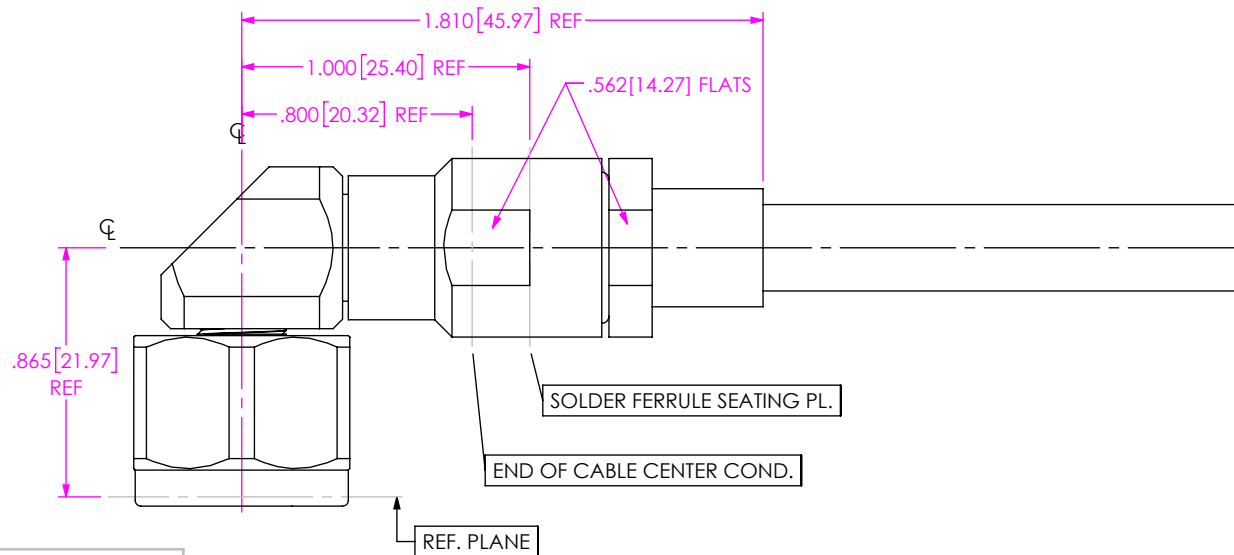
- 2A. SLIDE CLAMP NUT OVER CABLE AS SHOWN.
- 2B. INSERT CABLE INTO SOLDER FERRULE UNTIL CABLE DIELECTRIC IS FLUSH WITH FACE OF FERRULE. THEN SOLDER BOTH CABLE BRAIDS WHERE SHOWN.
- 2C. TRIM CABLE DIELECTRIC FLUSH WITH FACE OF FERRULE.
- 2D. SLIDE $\text{Ø}.315 [8.00]$ ULTEM STOP ONTO CABLE CENTER CONDUCTOR AND SOLDER CONTACT FLUSH AGAINST STOP TO DIMENSION SHOWN.

IN-PROCESS 2



3. SLIDE $\text{Ø}.274 [6.96]$ ULTEM STOP OVER CONTACT AGAINST SHOULDER AS SHOWN.

IN-PROCESS 3



4. INSERT CABLE/CONTACT SUB-ASSEMBLY INTO CONNECTOR UNTIL SEATED AND TIGHTEN CLAMP NUT TO 35-45 IN-LBS.

IN-PROCESS 4

PROPRIETARY NOTE
 THIS DOCUMENT CONTAINS CONFIDENTIAL AND PROPRIETARY INFORMATION AND ALL DESIGN, MANUFACTURING, REPRODUCTION, USE, PATENT RIGHTS AND SALES RIGHTS ARE EXPRESSLY RESERVED BY SAMTEC, INC. THIS DOCUMENT SHALL NOT BE DISCLOSED, IN WHOLE OR PART, TO ANY UNAUTHORIZED PERSON OR ENTITY NOR REPRODUCED, TRANSFERRED OR INCORPORATED IN ANY OTHER PROJECT IN ANY MANNER WITHOUT THE EXPRESS WRITTEN CONSENT OF SAMTEC, INC.



520 PARK EAST BLVD, NEW ALBANY, IN 47150
 PHONE: 812-944-6733 FAX: 812-948-5047
 e-Mail info@SAMTEC.com code 55322

DO NOT SCALE DRAWING

SHEET SCALE: 1.5:1

DESCRIPTION: NTPE RA PLUG, SOLDER CLAMP FOR HARBOUR LL335I CABLE

DWG. NO. PRF06-P-C-EP-335A-RS

BY: SAMUEL C 07/24/2020 SHEET 2 OF 2