

DO NOT SCALE FROM THIS PRINT

DESIGNED & DIMENSIONED IN INCHES[MILLIMETERS]  
ALL DIMENSIONS REFERENCE EXCEPT AS SHOWN

PRF10-J-C-VP-047A-BS-X

**SERIES**  
-10: 1.0 MM

**GENDER**  
-J: JACK

**TYPE**  
-C: CABLE

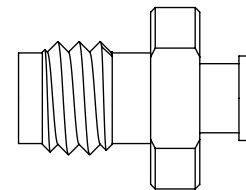
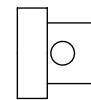
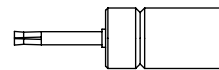
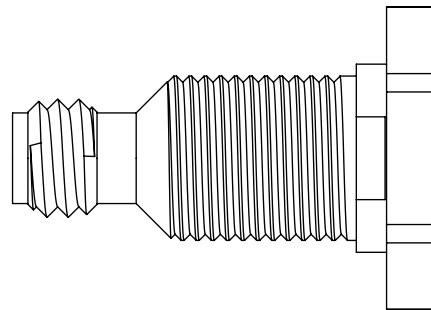
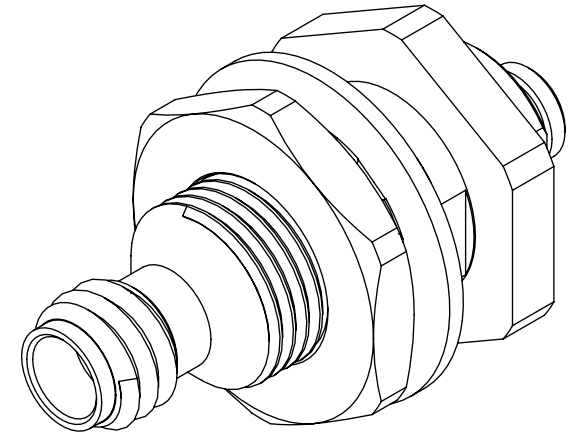
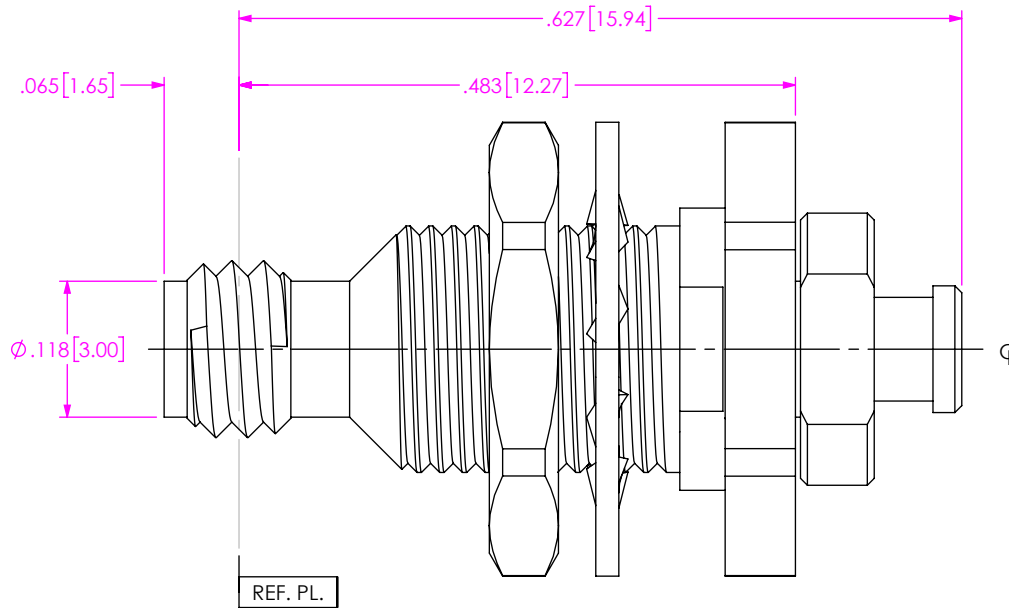
**PLATING**  
-VP: 50µ"-75µ" PRECISION GOLD CENTER CONTACT, PASSIVATED OUTER CONTACT

**PACKAGING**  
-B: BULK (IN INCREMENTS OF 50)  
(BLANK): STANDARD PACKAGING

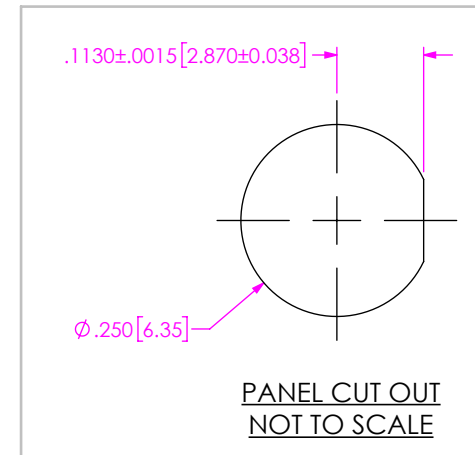
**TERMINATION**  
-S: SOLDER CLAMP

**ORIENTATION**  
-B: BULKHEAD

**CABLE TYPE**  
-047A: CCA-047-PFA



EXPLODED VIEW  
NOT TO SCALE  
(FOR CLARITY ONLY)



NOTES:

- MATERIALS:**  
BODY, CLAMP NUT, JAM NUT & LOCK WASHER: STAINLESS STEEL.  
CONTACT, SOLDER FERRULE & BUSHING: BERYLLIUM COPPER.  
FORWARD BEAD: ULTEM 1000.  
REAR BEAD: PCTFE (KEL-F).
- FINISH:**  
BODY, CLAMP NUT, JAM NUT & LOCK WASHERT: PASSIVATED.  
CONTACT, SOLDER FERRULE & BUSHING: 50µ"-75µ" GOLD OVER 50µ"-75µ" NICKEL PLATE.
- BULK PACKAGING OPTION (-B) FOR ORDERS IN INCREMENTS OF 50 PCS.**

F:\DWG\MISC\MKTG\PRF10-J-C-VP-047A-BS-X-MKT.SLDDRW

UNLESS OTHERWISE SPECIFIED, DIMENSIONS ARE IN INCHES. TOLERANCES ARE:  
DECIMALS ANGLES  
.XX: ±.01 [0.3] 1°  
.XXX: ±.005 [0.13]  
.XXXX: ±.0005 [0.013]

**PROPRIETARY NOTE**  
THIS DOCUMENT CONTAINS CONFIDENTIAL AND PROPRIETARY INFORMATION AND ALL DESIGN, MANUFACTURING, REPRODUCTION, USE, PATENT RIGHTS AND SALES RIGHTS ARE EXPRESSLY RESERVED BY SAMTEC, INC. THIS DOCUMENT SHALL NOT BE DISCLOSED, IN WHOLE OR PART, TO ANY UNAUTHORIZED PERSON OR ENTITY NOR REPRODUCED, TRANSFERRED OR INCORPORATED IN ANY OTHER PROJECT IN ANY MANNER WITHOUT THE EXPRESS WRITTEN CONSENT OF SAMTEC, INC.

DO NOT SCALE DRAWING

SHEET SCALE: 6:1



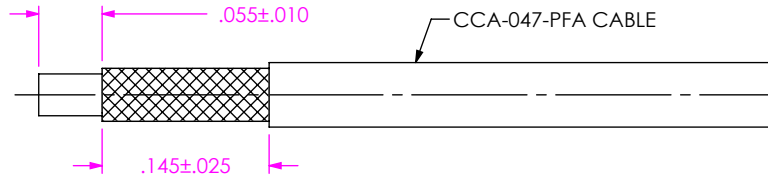
520 PARK EAST BLVD, NEW ALBANY, IN 47150  
PHONE: 812-944-6733 FAX: 812-948-5047  
e-Mail info@SAMTEC.com code 55322

DESCRIPTION: 1.0MM JACK, SOLDER CLAMP FOR CCA-047-PFA CABLE

DWG. NO. PRF10-J-C-VP-047A-BS-X

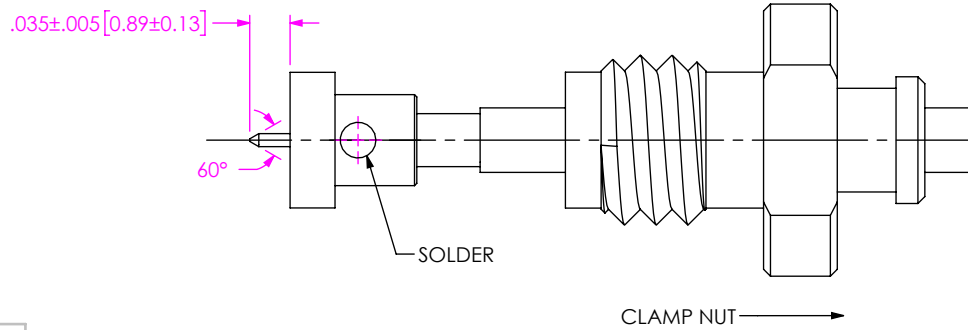
BY: EVE L 11/04/2021 SHEET 1 OF 3

# CABLE APPLICATION VIEWS



1. TRIM CABLE AS SHOWN.

IN-PROCESS VIEW 1



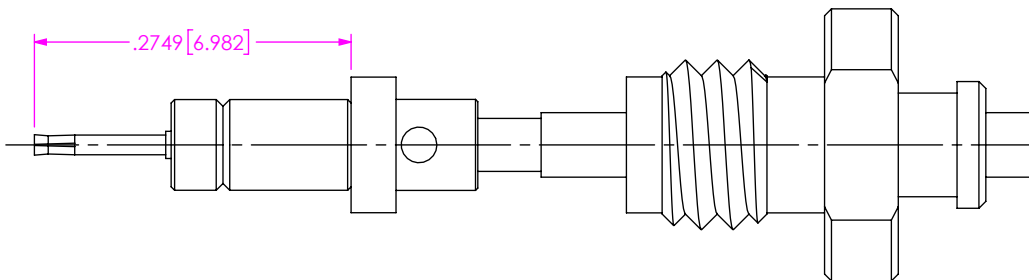
2A. SLIDE CLAMP NUT ONTO CABLE AS SHOWN.

2B. INSTALL CABLE INTO SOLDER FERRULE UNTIL CABLE IS FULLY SEATED. THEN SOLDER CABLE TO FERRULE WHERE SHOWN

2C. TRIM DIELECTRIC CORE FLUSH TO SOLDER FERRULE TO EXPOSE CONDUCTOR.

2D. POINT CENTER CONDUCTOR AS SHOWN.

IN-PROCESS VIEW 2



3. INSERT CABLE SUB-ASSEMBLY INTO BUSHING AS SHOWN.

IN-PROCESS VIEW 3

**PROPRIETARY NOTE**  
 THIS DOCUMENT CONTAINS CONFIDENTIAL AND PROPRIETARY INFORMATION AND ALL DESIGN, MANUFACTURING, REPRODUCTION, USE, PATENT RIGHTS AND SALES RIGHTS ARE EXPRESSLY RESERVED BY SAMTEC, INC. THIS DOCUMENT SHALL NOT BE DISCLOSED, IN WHOLE OR PART, TO ANY UNAUTHORIZED PERSON OR ENTITY NOR REPRODUCED, TRANSFERRED OR INCORPORATED IN ANY OTHER PROJECT IN ANY MANNER WITHOUT THE EXPRESS WRITTEN CONSENT OF SAMTEC, INC.



520 PARK EAST BLVD, NEW ALBANY, IN 47150  
 PHONE: 812-944-6733 FAX: 812-948-5047  
 e-Mail info@SAMTEC.com code 55322

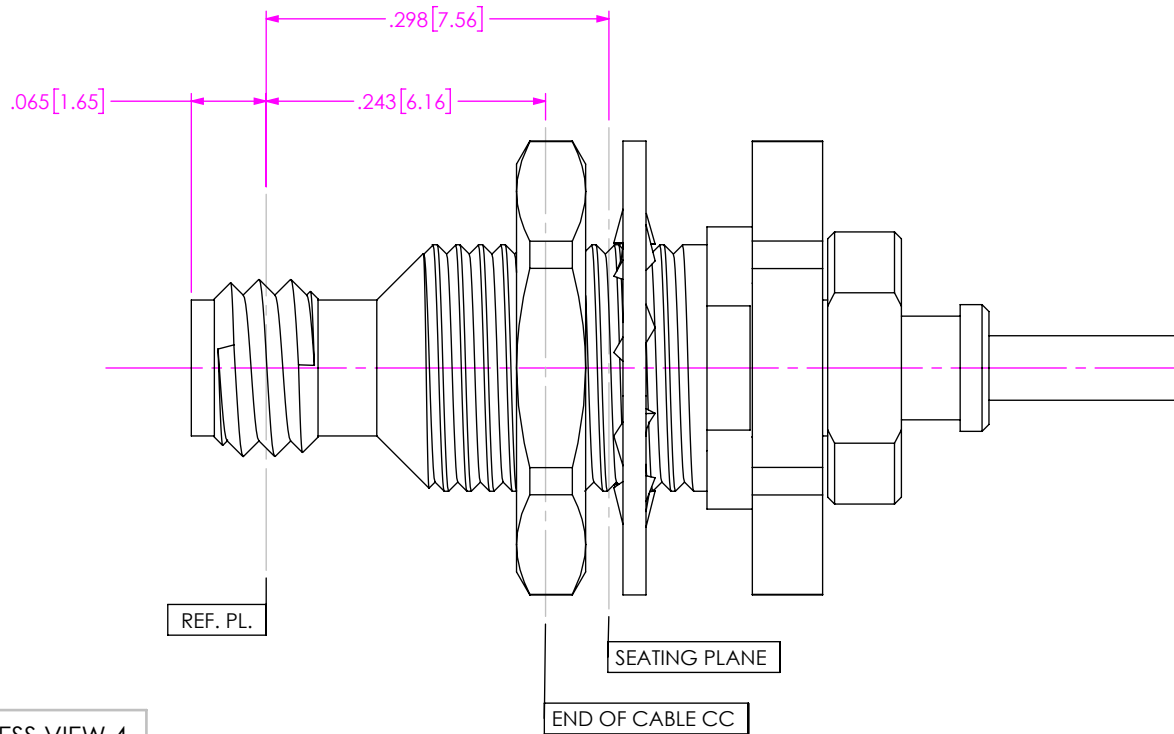
DO NOT SCALE DRAWING

SHEET SCALE: 6:1

DESCRIPTION: 1.0MM JACK, SOLDER CLAMP FOR CCA-047-PFA CABLE

DWG. NO. PRF10-J-C-VP-047A-BS-X

BY: EVE L 11/04/2021 SHEET 2 OF 3



REF. PL.

SEATING PLANE

END OF CABLE CC

4. INSERT CABLE SUB-ASSEMBLY INTO CONNECTOR AND TIGHTEN CLAMP NUT TO 5-7 IN-LBS.

IN-PROCESS VIEW 4

**PROPRIETARY NOTE**  
 THIS DOCUMENT CONTAINS CONFIDENTIAL AND PROPRIETARY INFORMATION AND ALL DESIGN, MANUFACTURING, REPRODUCTION, USE, PATENT RIGHTS AND SALES RIGHTS ARE EXPRESSLY RESERVED BY SAMTEC, INC. THIS DOCUMENT SHALL NOT BE DISCLOSED, IN WHOLE OR PART, TO ANY UNAUTHORIZED PERSON OR ENTITY NOR REPRODUCED, TRANSFERRED OR INCORPORATED IN ANY OTHER PROJECT IN ANY MANNER WITHOUT THE EXPRESS WRITTEN CONSENT OF SAMTEC, INC.



520 PARK EAST BLVD, NEW ALBANY, IN 47150  
 PHONE: 812-944-6733 FAX: 812-948-5047  
 e-Mail info@SAMTEC.com code 55322

DO NOT SCALE DRAWING

SHEET SCALE: 6:1

DESCRIPTION: 1.0MM JACK, SOLDER CLAMP FOR CCA-047-PFA CABLE

DWG. NO. PRF10-J-C-VP-047A-BS-X

BY: EVE L 11/04/2021 SHEET 3 OF 3