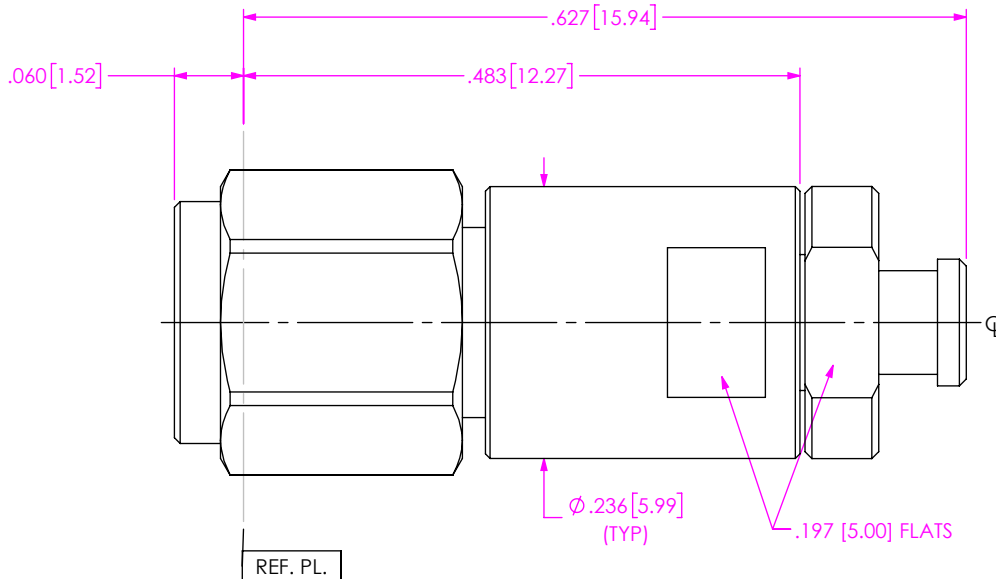


DESIGNED & DIMENSIONED IN INCHES[MILLIMETERS]
ALL DIMENSIONS REFERENCE EXCEPT AS SHOWN

DO NOT
SCALE FROM
THIS PRINT



PRF10-P-C-VP-047A-SS

SERIES
-10: 1.0 MM

GENDER
-P: PLUG

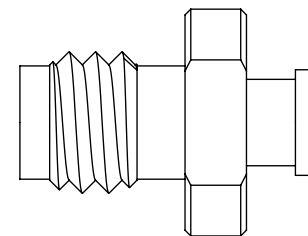
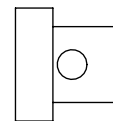
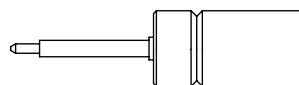
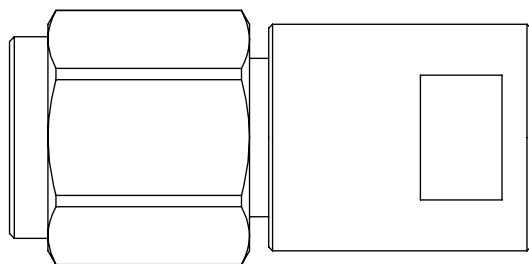
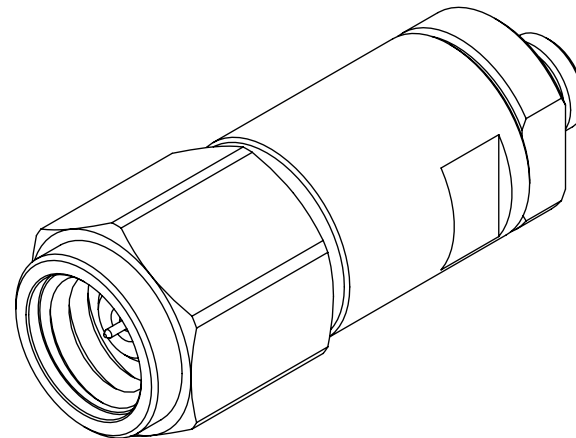
TYPE
-C: CABLE

PLATING
-VP: 50µ"-75µ" PRECISION GOLD
CENTER CONTACT,
PASSIVATED OUTER CONTACT

TERMINATION
-S: SOLDER CLAMP

ORIENTATION
-S: STRAIGHT

CABLE TYPE
-047A: CCA-047-PFA




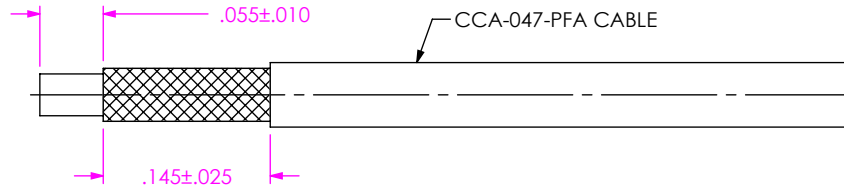
EXPLODED VIEW
NOT TO SCALE
(FOR CLARITY ONLY)

NOTES:

- MATERIALS:
BODY, CLAMP NUT & COUPLING NUT: STAINLESS STEEL.
CONTACT, SOLDER FERRULE & BUSHING: BERYLLIUM COPPER.
FORWARD BEAD: ULTEM 1000.
REAR BEAD: PCTFE (KEL-F).
LOCK RING: COPPER ALLOY.
GASKET: SILICONE RUBBER.
- FINISH:
BODY, CLAMP NUT, COUPLING NUT: PASSIVATED.
CONTACT, SOLDER FERRULE & BUSHING: 50µ"-75µ" GOLD OVER 50µ"-75µ" NICKEL PLATE.

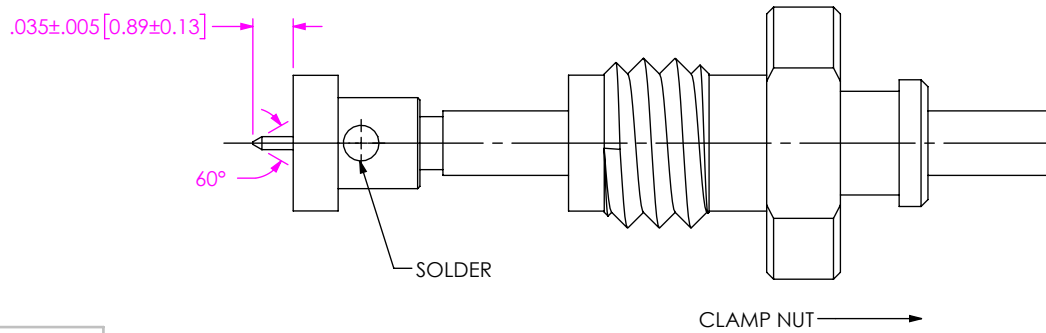
c:\enterprise\vauf\DWG\MISC\MKTG\PRF10-P-C-VP-047A-SS-MKT.SLDDRW

UNLESS OTHERWISE SPECIFIED, DIMENSIONS ARE IN INCHES. TOLERANCES ARE: DECIMALS ANGLES .XX: ±.01 [0.3] 1° .XXX: ±.005 [0.13] .XXXX: ±.0005 [0.013]	* PROPRIETARY NOTE * THIS DOCUMENT CONTAINS CONFIDENTIAL AND PROPRIETARY INFORMATION AND ALL DESIGN, MANUFACTURING, REPRODUCTION, USE, PATENT RIGHTS AND SALES RIGHTS ARE EXPRESSLY RESERVED BY SAMTEC, INC. THIS DOCUMENT SHALL NOT BE DISCLOSED, IN WHOLE OR PART, TO ANY UNAUTHORIZED PERSON OR ENTITY NOR REPRODUCED, TRANSFERRED OR INCORPORATED IN ANY OTHER PROJECT IN ANY MANNER WITHOUT THE EXPRESS WRITTEN CONSENT OF SAMTEC, INC.	 520 PARK EAST BLVD, NEW ALBANY, IN 47150 PHONE: 812-944-6733 FAX: 812-948-5047 e-Mail: info@SAMTEC.com code 55322
		DO NOT SCALE DRAWING SHEET SCALE: 6:1



1. TRIM CABLE AS SHOWN.

IN-PROCESS VIEW 1



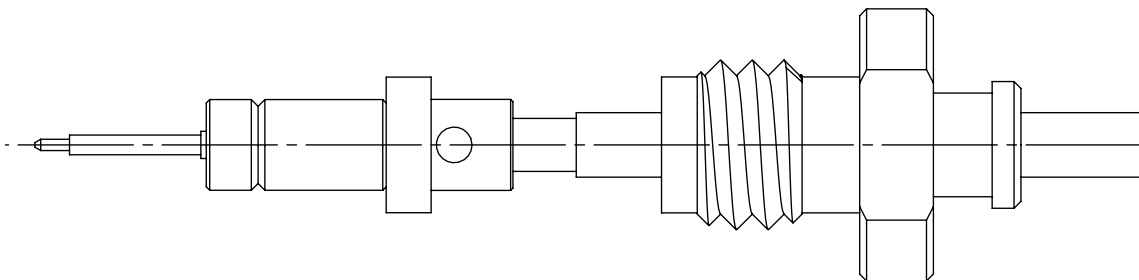
2A. SLIDE CLAMP NUT ONTO CABLE AS SHOWN.

2B. INSTALL CABLE INTO SOLDER FERRULE UNTIL CABLE IS FULLY SEATED. THEN SOLDER CABLE TO FERRULE WHERE SHOWN

2C. TRIM DIELECTRIC CORE FLUSH TO SOLDER FERRULE TO EXPOSE CONDUCTOR.

2D. POINT CENTER CONDUCTOR AS SHOWN.

IN-PROCESS VIEW 2



3. INSERT CABLE SUB-ASSEMBLY INTO BUSHING AS SHOWN.

IN-PROCESS VIEW 3

PROPRIETARY NOTE
 THIS DOCUMENT CONTAINS CONFIDENTIAL AND PROPRIETARY INFORMATION AND ALL DESIGN, MANUFACTURING, REPRODUCTION, USE, PATENT RIGHTS AND SALES RIGHTS ARE EXPRESSLY RESERVED BY SAMTEC, INC. THIS DOCUMENT SHALL NOT BE DISCLOSED, IN WHOLE OR PART, TO ANY UNAUTHORIZED PERSON OR ENTITY NOR REPRODUCED, TRANSFERRED OR INCORPORATED IN ANY OTHER PROJECT IN ANY MANNER WITHOUT THE EXPRESS WRITTEN CONSENT OF SAMTEC, INC.



520 PARK EAST BLVD, NEW ALBANY, IN 47150
 PHONE: 812-944-6733 FAX: 812-948-5047
 e-Mail info@SAMTEC.com code 55322

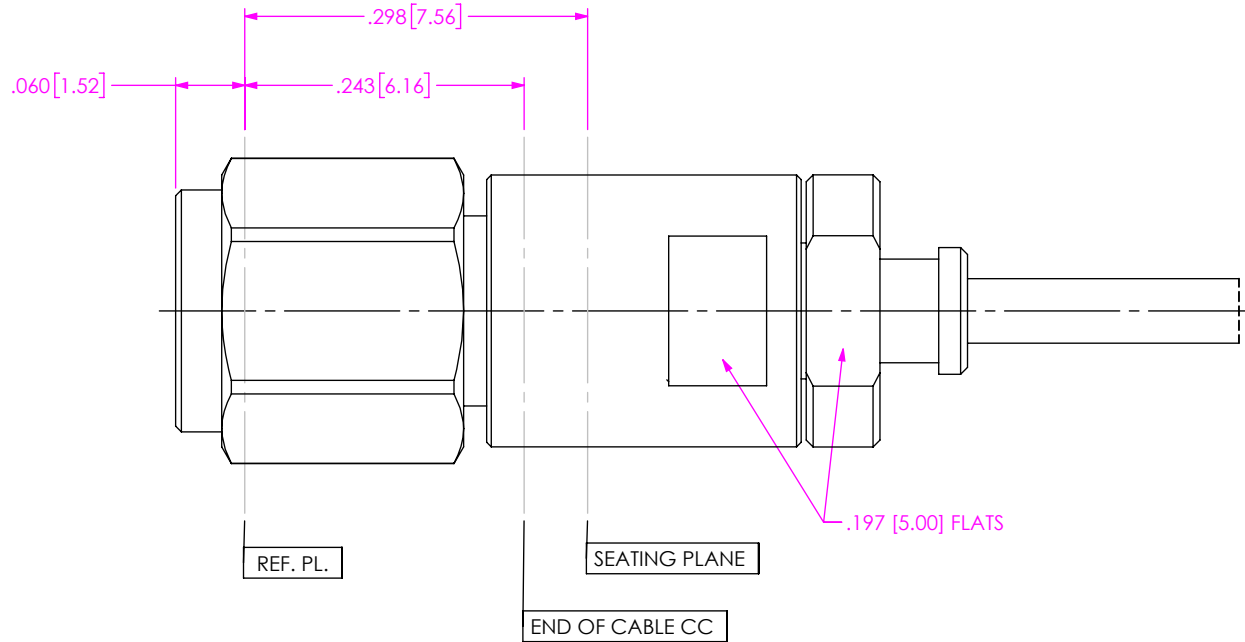
DO NOT SCALE DRAWING

SHEET SCALE: 6:1

DESCRIPTION: 1.0MM PLUG, SOLDER CLAMP FOR CCA-047-PFA CABLE

DWG. NO. PRF10-P-C-VP-047A-SS

BY: EVE L 11/02/2021 SHEET 2 OF 3



4. INSERT CABLE SUB-ASSEMBLY INTO CONNECTOR AND TIGHTEN CLAMP NUT TO 5-7 IN-LBS.

IN-PROCESS VIEW 4

PROPRIETARY NOTE
 THIS DOCUMENT CONTAINS CONFIDENTIAL AND PROPRIETARY INFORMATION AND ALL DESIGN, MANUFACTURING, REPRODUCTION, USE, PATENT RIGHTS AND SALES RIGHTS ARE EXPRESSLY RESERVED BY SAMTEC, INC. THIS DOCUMENT SHALL NOT BE DISCLOSED, IN WHOLE OR PART, TO ANY UNAUTHORIZED PERSON OR ENTITY NOR REPRODUCED, TRANSFERRED OR INCORPORATED IN ANY OTHER PROJECT IN ANY MANNER WITHOUT THE EXPRESS WRITTEN CONSENT OF SAMTEC, INC.



520 PARK EAST BLVD, NEW ALBANY, IN 47150
 PHONE: 812-944-6733 FAX: 812-948-5047
 e-Mail info@SAMTEC.com code 55322

DO NOT SCALE DRAWING

SHEET SCALE: 6:1

DESCRIPTION: 1.0MM PLUG, SOLDER CLAMP FOR CCA-047-PFA CABLE

DWG. NO. PRF10-P-C-VP-047A-SS

BY: EVE L 11/02/2021 SHEET 3 OF 3