

DO NOT SCALE FROM THIS PRINT

DESIGNED AND DIMENSIONED IN INCHES[MILLIMETERS]
ALL DIMENSIONS REFERENCE EXCEPT AS SHOWN

PRF24-P-C-EP-085-SS

SERIES
-24: 2.4MM

GENDER
-P: PLUG

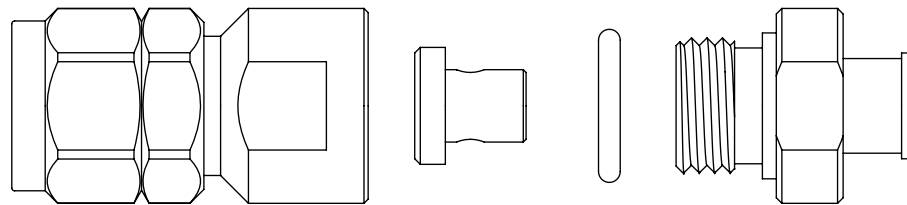
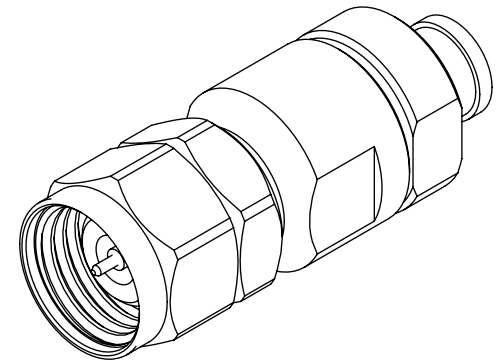
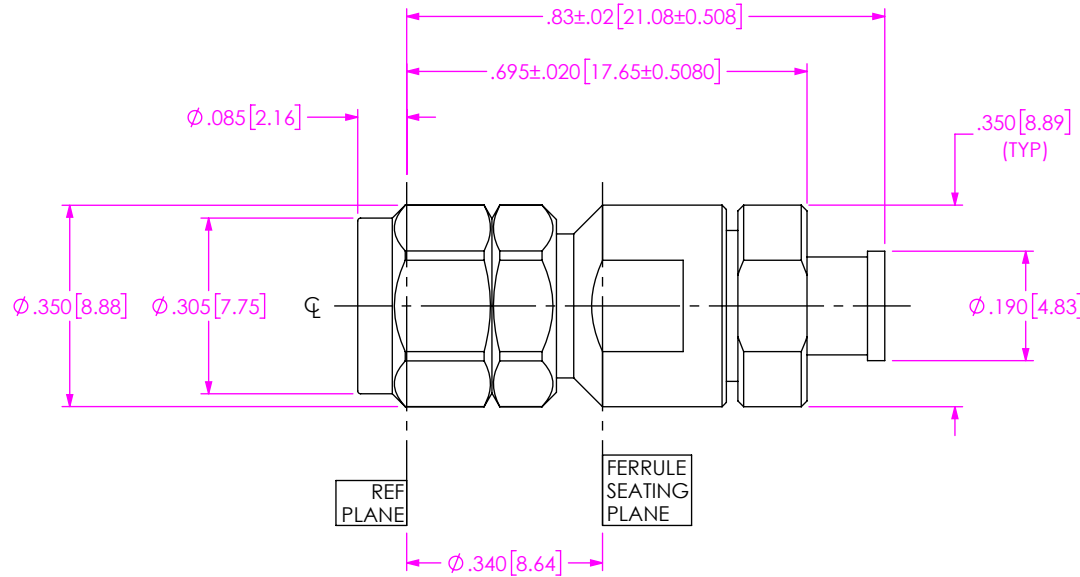
TYPE
-C: CABLE

TERMINATION
-S: SOLDER CLAMP

ORIENTATION
-S: STRAIGHT

FINISH
-EP: 50µ" EXTRA HEAVY GOLD CENTER CONTACT, PASSIVATED OUTER CONTACT

CABLE TYPE
-085: HARBOUR SS405



EXPLODED VIEW
NOT TO SCALE
(FOR CLARITY ONLY)

NOTES:

- MATERIAL:
BODY, BUSHING, CLAMP NUT, COUPLING NUT: STAINLESS STEEL.
GASKET: SILICONE RUBBER.
BEAD: ULTEM.
SOLDER FERRULE: BRASS
CONTACT, LOCK RING: BERYLLIUM COPPER.
- FINISH:
BODY, BUSHING, CLAMP NUT, COUPLING NUT: PASSIVATED.
CONTACT: 50 µ" MIN GOLD OVER 50 µ" MIN NICKEL.
SOLDER FERRULE: 10 µ" MIN GOLD OVER 50 µ" MIN NICKEL.

PROPRIETARY NOTE
THIS DOCUMENT CONTAINS CONFIDENTIAL AND PROPRIETARY INFORMATION AND ALL DESIGN, MANUFACTURING, REPRODUCTION, USE, PATENT RIGHTS AND SALES RIGHTS ARE EXPRESSLY RESERVED BY SAMTEC, INC. THIS DOCUMENT SHALL NOT BE DISCLOSED, IN WHOLE OR PART, TO ANY UNAUTHORIZED PERSON OR ENTITY NOR REPRODUCED, TRANSFERRED OR INCORPORATED IN ANY OTHER PROJECT IN ANY MANNER WITHOUT THE EXPRESS WRITTEN CONSENT OF SAMTEC, INC.



520 PARK EAST BLVD, NEW ALBANY, IN 47150
PHONE: 812-944-6733 FAX: 812-948-5047
e-Mail info@SAMTEC.com code 55322

DO NOT SCALE DRAWING
SHEET SCALE: 3:1

DESCRIPTION:
2.4MM PLUG, SOLDER CLAMP ASSEMBLY

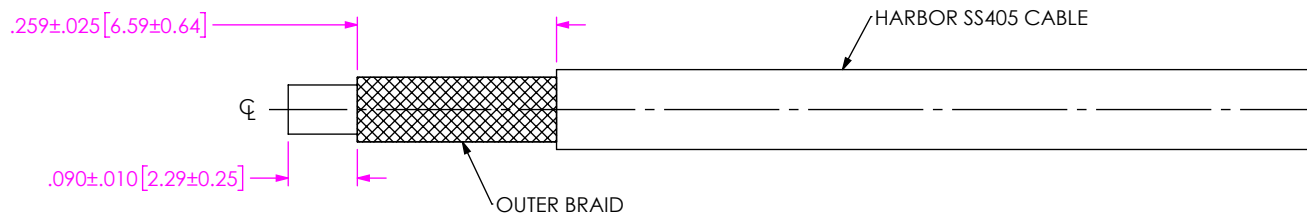
DWG. NO.
PRF24-P-C-EP-085-SS

BY: ADAM H. 9/20/2019 SHEET 1 OF 2

CABLE APPLICATION VIEWS

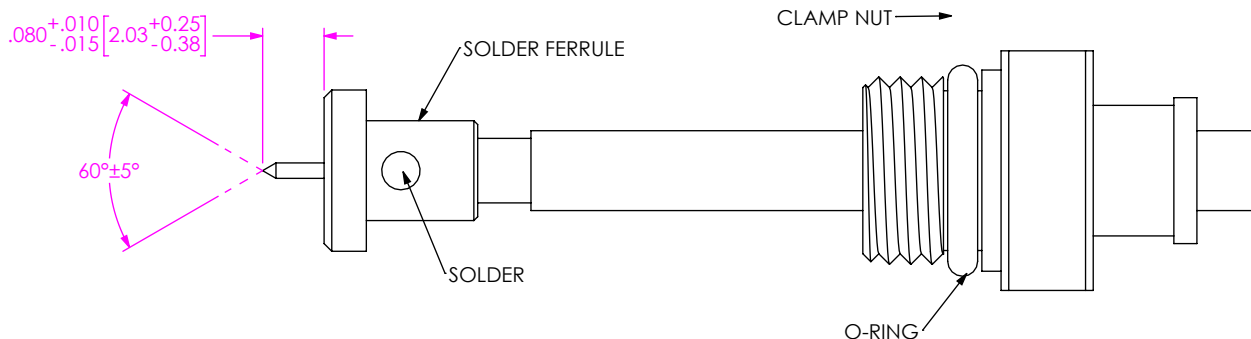
1A: TRIM CABLE TO EXPOSE OUTER BRAID AND DIELECTRIC CORE AS SHOWN.

IN-PROCESS VIEW 1



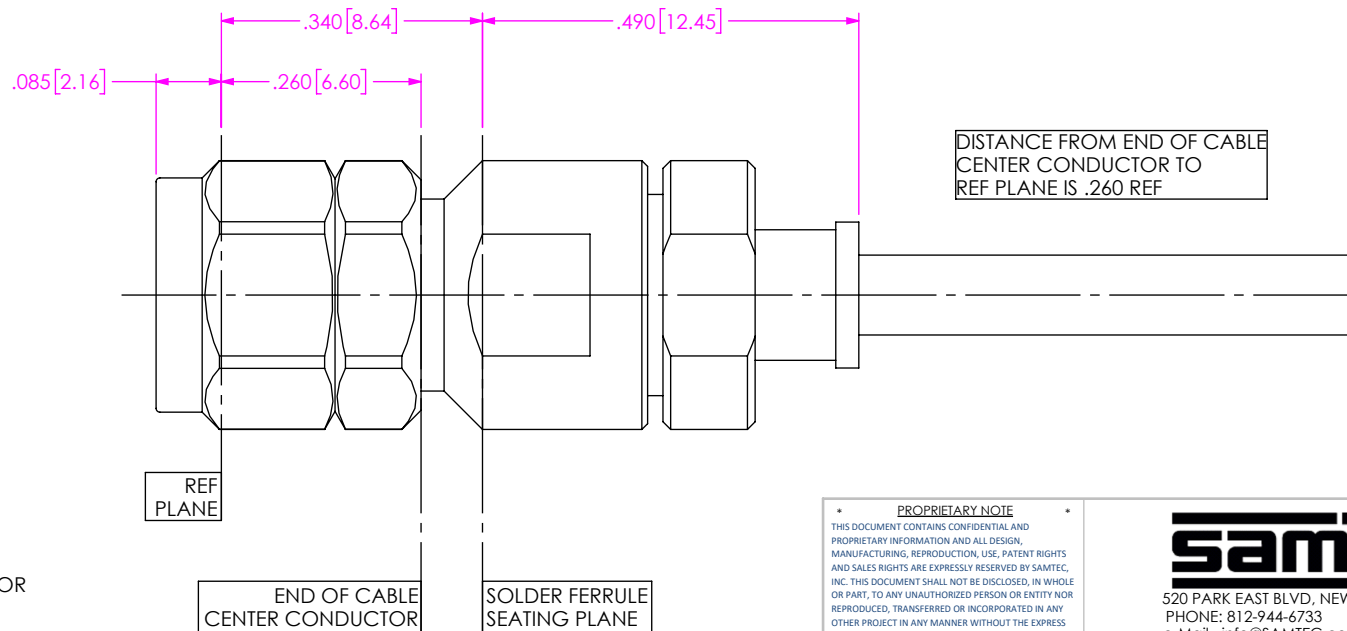
2A: SLIDE CLAMP NUT ONTO CABLE AS SHOWN.
 2B: INSERT CABLE INTO SOLDER FERRULE UNTIL BRAID SEATS IN FERRULE. THEN SOLDER CABLE TO FERRULE WHERE SHOWN.
 2C: TRIM CABLE DIELECTRIC FLUSH WITH FERRULE FACE AND POINT CENTER CONDUCTOR SHOWN.

IN-PROCESS VIEW 2



3A: INSERT CABLE SUB-ASSEMBLY INTO CONNECTOR BODY UNTIL SOLDER FERRULE IS SEATED AND CABLE CENTER CONDUCTOR PLUGS IN, THEN TIGHTEN CLAMP NUT TO 25-35 IN-LBS.

IN-PROCESS VIEW 3



<p>PROPRIETARY NOTE</p> <p>THIS DOCUMENT CONTAINS CONFIDENTIAL AND PROPRIETARY INFORMATION AND ALL DESIGN, MANUFACTURING, REPRODUCTION, USE, PATENT RIGHTS AND SALES RIGHTS ARE EXPRESSLY RESERVED BY SAMTEC, INC. THIS DOCUMENT SHALL NOT BE DISCLOSED, IN WHOLE OR PART, TO ANY UNAUTHORIZED PERSON OR ENTITY NOR REPRODUCED, TRANSFERRED OR INCORPORATED IN ANY OTHER PROJECT IN ANY MANNER WITHOUT THE EXPRESS WRITTEN CONSENT OF SAMTEC, INC.</p>		
	<p>520 PARK EAST BLVD, NEW ALBANY, IN 47150 PHONE: 812-944-6733 FAX: 812-948-5047 e-Mail info@SAMTEC.com code 55322</p>	
	<p>DO NOT SCALE DRAWING</p>	<p>DESCRIPTION: 2.4MM PLUG, SOLDER CLAMP ASSEMBLY</p>
<p>SHEET SCALE: 4:1</p>	<p>DWG. NO. PRF24-P-C-EP-085-SS</p>	<p>BY: ADAM H. 9/20/2019 SHEET 2 OF 2</p>