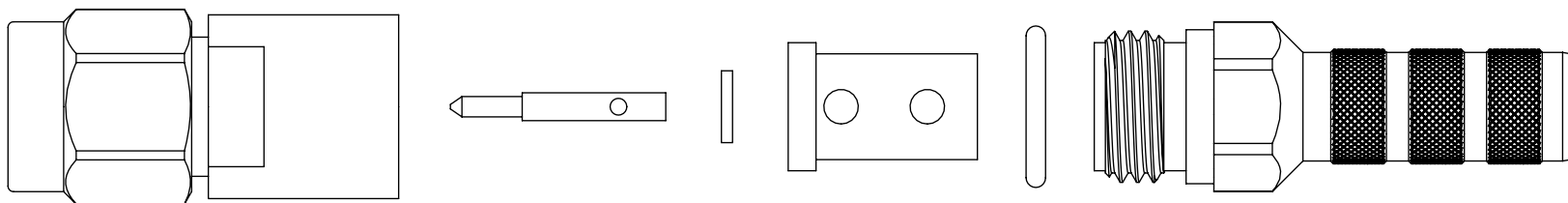
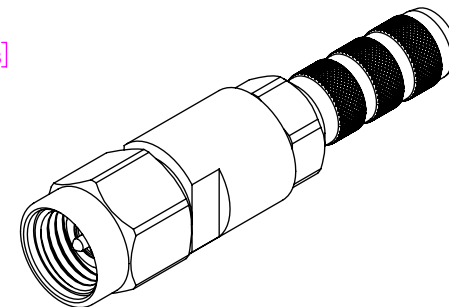
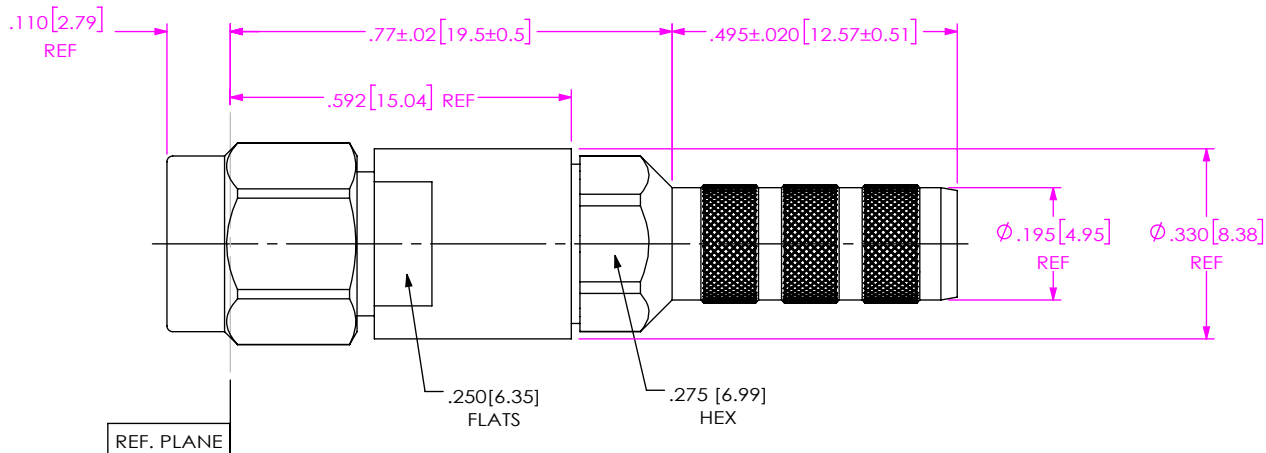


DO NOT SCALE FROM THIS PRINT

DESIGNED & DIMENSIONED IN INCHES[MILLIMETERS]

PRF92-P-C-EP-135A-SS

SERIES -92: 2.92MM
 GENDER -P: PLUG
 TYPE -C: CABLE
 FINISH -EP: 50µ" EXTRA HEAVY GOLD CENTER CONTACT, PASSIVATED OUTER BODY
 TERMINATION -S: SOLDER CLAMP
 ORIENTATION -S: STRAIGHT
 CABLE TYPE -135A: ARMORED A89TK



EXPLODED VIEW
 NOT TO SCALE
 (FOR CLARITY ONLY)

NOTES:

- MATERIAL:
 BODY, ARMOR CLAMP NUT & COUPLING NUT: STAINLESS STEEL.
 CONTACT & LOCK RING: BeCu.
 GASKET: SILICONE RUBBER.
 BEAD: PCTFE.
 SOLDER FERRULE: BRASS ALLOY 360.
 DIELECTRIC STOP: ULTEM 1000.
 O-RING: SILICONE RUBBER.
- FINISH:
 BODY, ARMOR CLAMP NUT & COUPLING NUT: PASSIVATED.
 CONTACT & SOLDER FERRULE: GOLD OVER NICKEL PLATE,
 50 µ" MIN GOLD OVER 50 µ" MIN NICKEL.
- PCI P/N: 4184.

UNLESS OTHERWISE SPECIFIED, DIMENSIONS ARE IN INCHES.
 TOLERANCES ARE:
 DECIMALS .XX: ±.01 [0.3]
 .XXX: ±.005 [0.13]
 .XXXX: ±.0005 [0.013]

PROPRIETARY NOTE
 THIS DOCUMENT CONTAINS CONFIDENTIAL AND PROPRIETARY INFORMATION AND ALL DESIGN, MANUFACTURING, REPRODUCTION, USE, PATENT RIGHTS AND SALES RIGHTS ARE EXPRESSLY RESERVED BY SAMTEC, INC. THIS DOCUMENT SHALL NOT BE DISCLOSED, IN WHOLE OR PART, TO ANY UNAUTHORIZED PERSON OR ENTITY NOR REPRODUCED, TRANSFERRED OR INCORPORATED IN ANY OTHER PROJECT IN ANY MANNER WITHOUT THE EXPRESS WRITTEN CONSENT OF SAMTEC, INC.



520 PARK EAST BLVD, NEW ALBANY, IN 47150
 PHONE: 812-944-6733 FAX: 812-948-5047
 e-Mail: info@SAMTEC.com code 55322

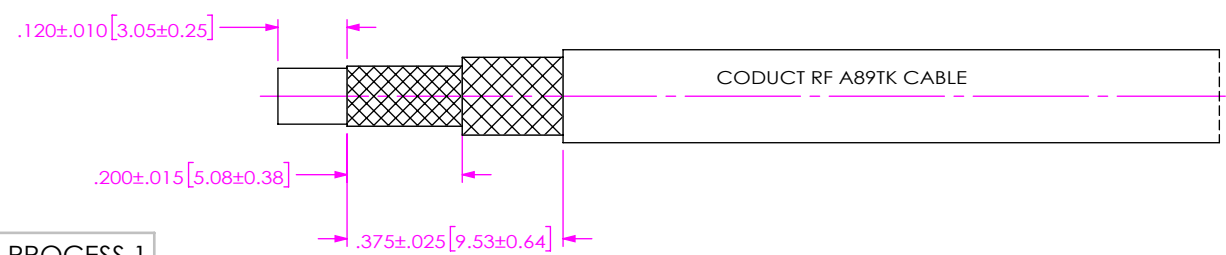
DO NOT SCALE DRAWING

SHEET SCALE: 3:1

DESCRIPTION: 2.92MM PLUG, SOLDER CLAMP FOR ARMORED A89TK CABLE. LOW PROFILE

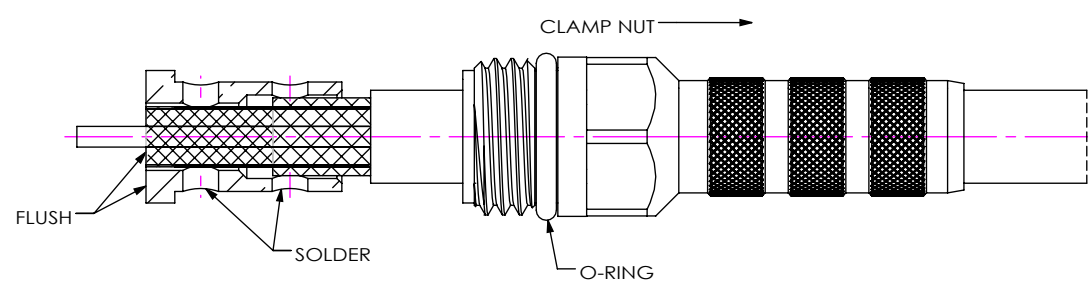
DWG. NO. PRF92-P-C-EP-135A-SS

BY: EVE L 02/25/2021 SHEET 1 OF 3



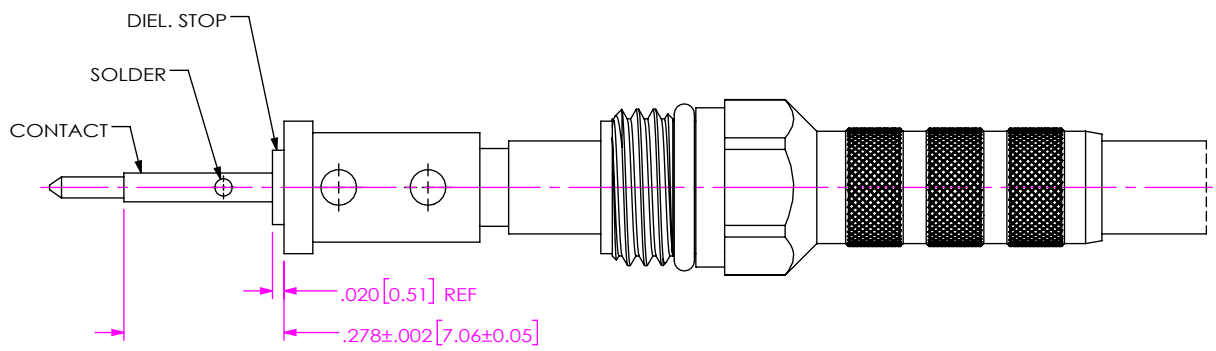
1A. TRIM CABLE TO EXPOSE BRAID, FOIL AND CENTER CONDUCTOR AS SHOWN.

IN-PROCESS 1



2A. INSTALL O-RING ONTO CLAMP NUT WHERE SHOWN AND SLIDE CLAMP NUT OVER CABLE IN ORIENTATION SHOWN.
 2B. INSERT CABLE INTO SOLDER FERRULE UNTIL CABLE DIELECTRIC IS FLUSH WITH SOLDER FERRULE FACE AND SOLER CABLE FOIL AND BRAID WHERE SHOWN.

IN-PROCESS 2



3A. SLIDE DIELECTRIC STOP OVER CABLE CENTER CONDUCTOR AND SOLDER CONTACT FLUSH TO STOP TO DIMENSION SHOWN.

IN-PROCESS 3

PROPRIETARY NOTE
 THIS DOCUMENT CONTAINS CONFIDENTIAL AND PROPRIETARY INFORMATION AND ALL DESIGN, MANUFACTURING, REPRODUCTION, USE, PATENT RIGHTS AND SALES RIGHTS ARE EXPRESSLY RESERVED BY SAMTEC, INC. THIS DOCUMENT SHALL NOT BE DISCLOSED, IN WHOLE OR PART, TO ANY UNAUTHORIZED PERSON OR ENTITY NOR REPRODUCED, TRANSFERRED OR INCORPORATED IN ANY OTHER PROJECT IN ANY MANNER WITHOUT THE EXPRESS WRITTEN CONSENT OF SAMTEC, INC.

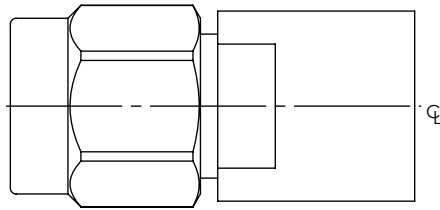


DO NOT SCALE DRAWING
 SHEET SCALE: 3:1

DESCRIPTION: 2.92MM PLUG, SOLDER CLAMP FOR ARMORED A89TK CABLE. LOW PROFILE

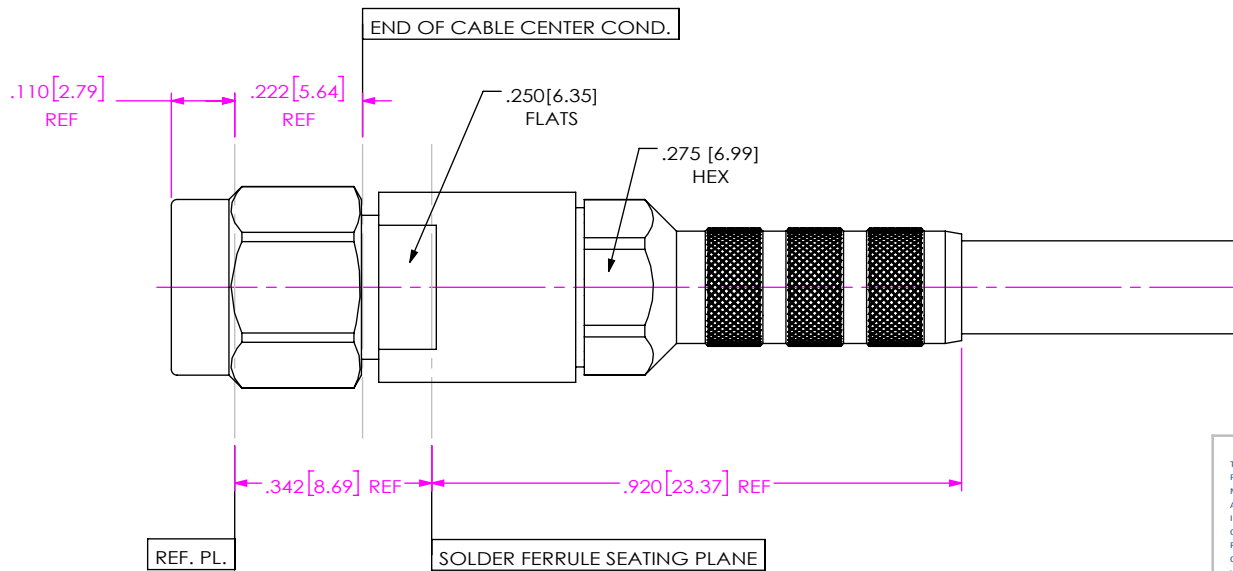
DWG. NO. PRF92-P-C-EP-135A-SS

BY: EVE L 02/25/2021 SHEET 2 OF 3




4A. DRILL BEAD INNER DIAMETER TO $\varnothing .037''$.

IN-PROCESS 4



5A. INSERT CABLE/CONTACT SUB-ASSEMBLY INTO CONNECTOR UNTIL SEATED AND TIGHTEN CLAMP NUT TO 25-35 IN-LBS.

IN-PROCESS 5

<p>DO NOT SCALE DRAWING</p> <p>SHEET SCALE: 3:1</p>	<p>PROPRIETARY NOTE</p> <p>THIS DOCUMENT CONTAINS CONFIDENTIAL AND PROPRIETARY INFORMATION AND ALL DESIGN, MANUFACTURING, REPRODUCTION, USE, PATENT RIGHTS AND SALES RIGHTS ARE EXPRESSLY RESERVED BY SAMTEC, INC. THIS DOCUMENT SHALL NOT BE DISCLOSED, IN WHOLE OR PART, TO ANY UNAUTHORIZED PERSON OR ENTITY NOR REPRODUCED, TRANSFERRED OR INCORPORATED IN ANY OTHER PROJECT IN ANY MANNER WITHOUT THE EXPRESS WRITTEN CONSENT OF SAMTEC, INC.</p>	 <p>520 PARK EAST BLVD, NEW ALBANY, IN 47150 PHONE: 812-944-6733 FAX: 812-948-5047 e-Mail info@SAMTEC.com code 55322</p>
	<p>DESCRIPTION:</p> <p>2.92MM PLUG, SOLDER CLAMP FOR ARMORED A89TK CABLE. LOW PROFILE</p>	
	<p>DWG. NO. PRF92-P-C-EP-135A-SS</p>	
<p>BY: EVE L</p>	<p>02/25/2021</p>	<p>SHEET 3 OF 3</p>