

DO NOT SCALE FROM THIS PRINT

DESIGNED & DIMENSIONED IN INCHES[MILLIMETERS]

PRF92-P-C-EP-135B-SS

SERIES
-92: 2.92MM

GENDER
-P: PLUG

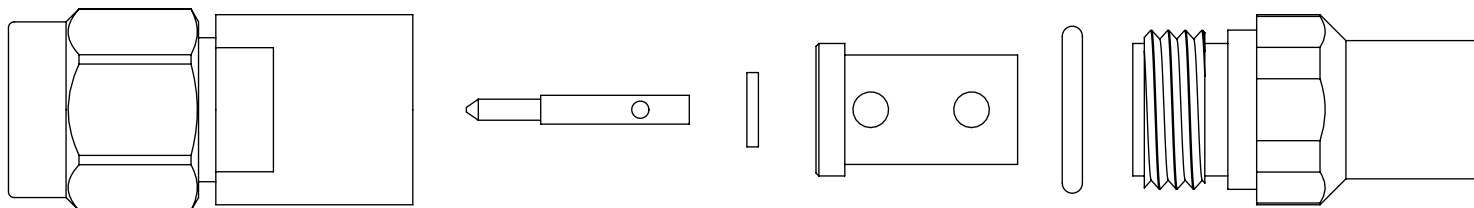
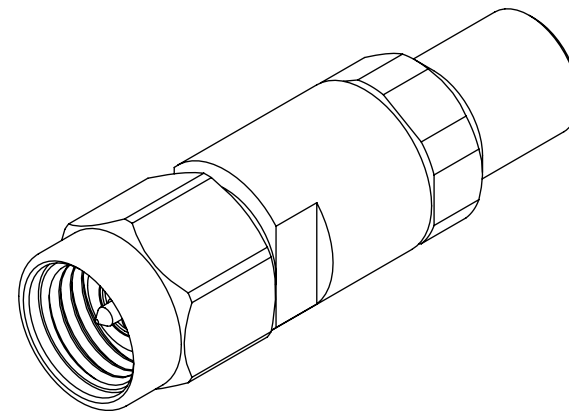
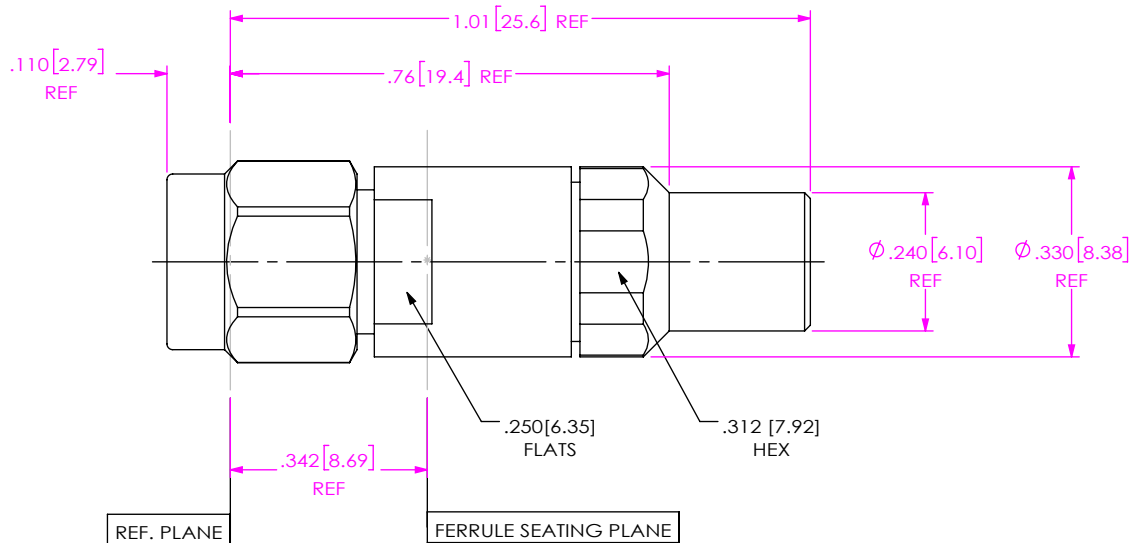
TYPE
-C: CABLE

FINISH
-EP: 50µ" EXTRA HEAVY GOLD CENTER CONTACT, PASSIVATED OUTER BODY

TERMINATION
-S: SOLDER CLAMP

ORIENTATION
-S: STRAIGHT

CABLE TYPE
-135B: LAB-FLEX 160S



EXPLODED VIEW
NOT TO SCALE
(FOR CLARITY ONLY)

NOTES:

- MATERIAL:
BODY, CLAMP NUT & COUPLING NUT: STAINLESS STEEL.
CONTACT & LOCK RING: BeCu.
GASKET: SILICONE RUBBER.
BEAD: NORLYL.
SOLDER FERRULE: BRASS ALLOY 360.
DIELECTRIC STOP: ULTEM 1000.
O-RING: SILICONE RUBBER.
- FINISH:
BODY, CLAMP NUT & COUPLING NUT: PASSIVATED.
CONTACT & SOLDER FERRULE: GOLD OVER NICKEL PLATE,
50 µ" MIN GOLD OVER 50 µ" MIN NICKEL.
- PCI P/N: 4083.

UNLESS OTHERWISE SPECIFIED,
DIMENSIONS ARE IN INCHES.
TOLERANCES ARE:
DECIMALS ANGLES
.XX: ±.01 [0.3] 1°
.XXX: ±.005 [0.13]
.XXXX: ±.0005 [0.013]

PROPRIETARY NOTE
THIS DOCUMENT CONTAINS CONFIDENTIAL AND PROPRIETARY INFORMATION AND ALL DESIGN, MANUFACTURING, REPRODUCTION, USE, PATENT RIGHTS AND SALES RIGHTS ARE EXPRESSLY RESERVED BY SAMTEC, INC. THIS DOCUMENT SHALL NOT BE DISCLOSED, IN WHOLE OR PART, TO ANY UNAUTHORIZED PERSON OR ENTITY NOR REPRODUCED, TRANSFERRED OR INCORPORATED IN ANY OTHER PROJECT IN ANY MANNER WITHOUT THE EXPRESS WRITTEN CONSENT OF SAMTEC, INC.



520 PARK EAST BLVD, NEW ALBANY, IN 47150
PHONE: 812-944-6733 FAX: 812-948-5047
e-Mail: info@SAMTEC.com code 55322

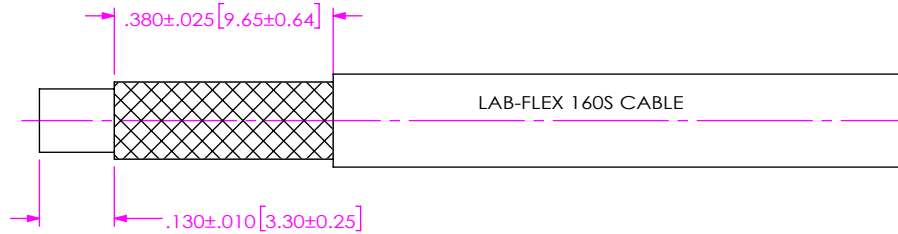
DO NOT SCALE DRAWING

SHEET SCALE: 3:1

DESCRIPTION: 2.92MM PLUG, SOLDER CLAMP FOR LAB-FLEX 160S CABLE

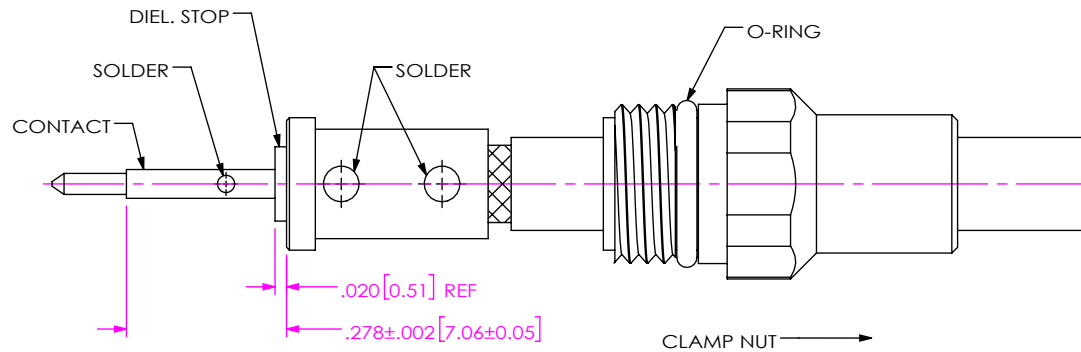
DWG. NO. PRF92-P-C-EP-135B-SS

BY: EVE L 07/13/2021 SHEET 1 OF 2



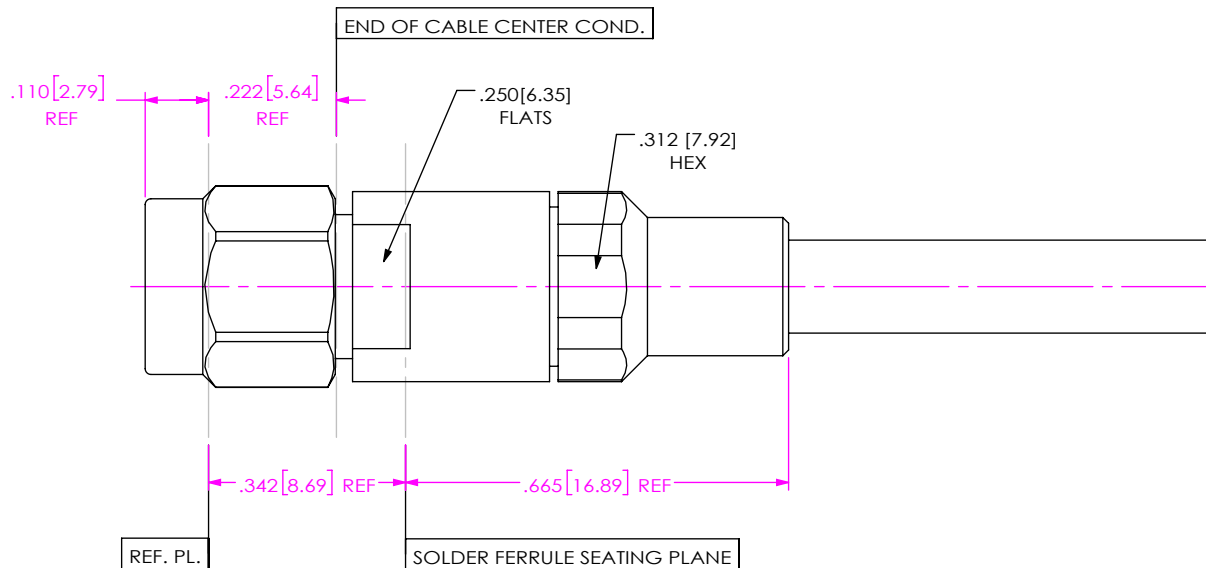
1A. TRIM CABLE TO EXPOSE DIELECTRIC AND OUTER BRAID AS SHOWN.

IN-PROCESS 1



- 2A. SLIDE CLAMP NUT ONTO CABLE IN ORIENTATION SHOWN.
- 2B. INSERT CABLE INTO SOLDER FERRULE UNTIL FULLY SEATED. THEN SOLDER CABLE TO FERRULE WHERE SHOWN.
- 2C. TRIM CABLE DIELECTRIC FLUSH WITH FERRULE FACE. (DO NOT SOCRE CENTER CONDUCTOR)
- 2B. SLIDE DIELECTRIC STOP OVER CABLE CENTER CONDUCTOR AND SOLDER CONTACT FLUSH TO STOP TO DIMENSION SHOWN.

IN-PROCESS 2



3A. INSERT CABLE/CONTACT SUB-ASSEMBLY INTO CONNECTOR UNTIL SEATED AND TIGHTEN CLAMP NUT TO 25-35 IN-LBS.

IN-PROCESS 3

<p>DO NOT SCALE DRAWING</p> <p>SHEET SCALE: 3:1</p>	<p>PROPRIETARY NOTE</p> <p>THIS DOCUMENT CONTAINS CONFIDENTIAL AND PROPRIETARY INFORMATION AND ALL DESIGN, MANUFACTURING, REPRODUCTION, USE, PATENT RIGHTS AND SALES RIGHTS ARE EXPRESSLY RESERVED BY SAMTEC, INC. THIS DOCUMENT SHALL NOT BE DISCLOSED, IN WHOLE OR PART, TO ANY UNAUTHORIZED PERSON OR ENTITY NOR REPRODUCED, TRANSFERRED OR INCORPORATED IN ANY OTHER PROJECT IN ANY MANNER WITHOUT THE EXPRESS WRITTEN CONSENT OF SAMTEC, INC.</p>	
	<p>samtec</p> <p>520 PARK EAST BLVD, NEW ALBANY, IN 47150 PHONE: 812-944-6733 FAX: 812-948-5047 e-Mail info@SAMTEC.com code 55322</p>	
	<p>DESCRIPTION:</p> <p>2.92MM PLUG, SOLDER CLAMP FOR LAB-FLEX 160S CABLE</p>	<p>DWG. NO.</p> <p>PRF92-P-C-EP-135B-SS</p>
<p>BY: EVE L</p>	<p>07/13/2021</p>	<p>SHEET 2 OF 2</p>