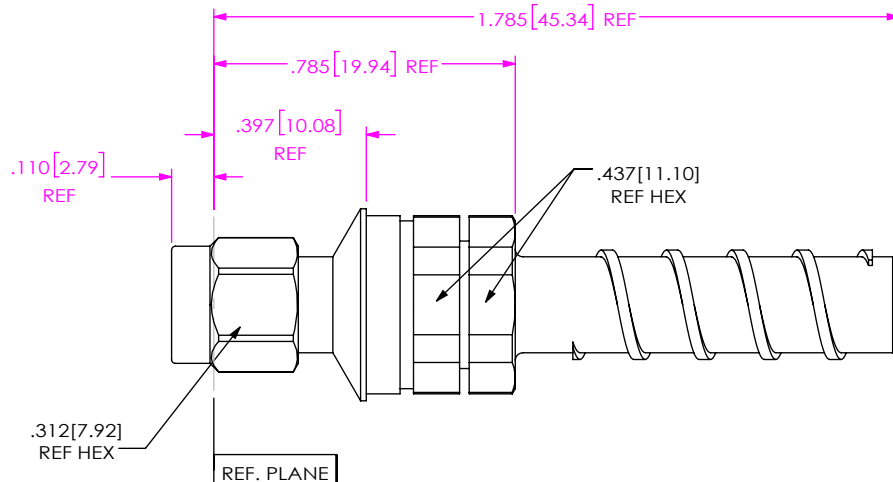


DO NOT SCALE FROM THIS PRINT

DESIGNED & DIMENSIONED IN INCHES[MILLIMETERS]



PRF92-P-C-EP-140C-SS

SERIES
-92: 2.92MM

GENDER
-P: PLUG

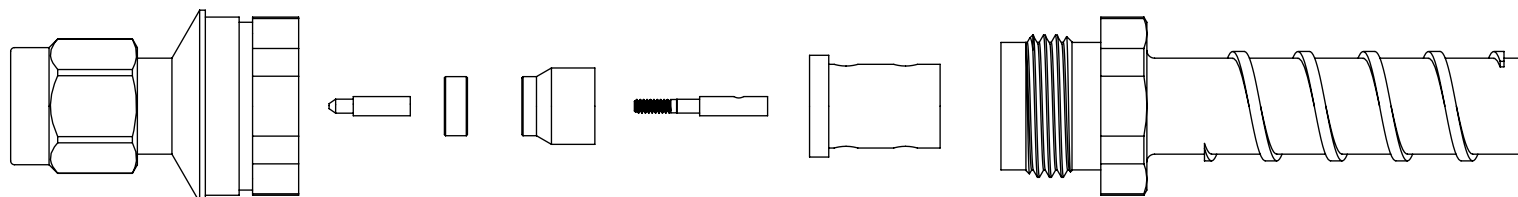
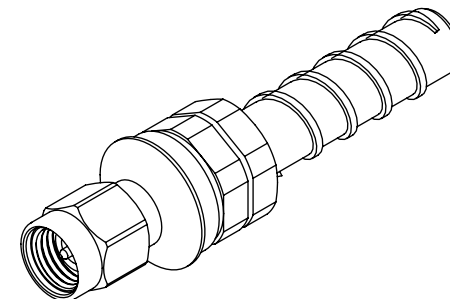
TYPE
-C: CABLE

TERMINATION
-S: SOLDER CLAMP

ORIENTATION
-S: STRAIGHT

CABLE TYPE
-140C: TIMES 510-0064

FINISH
-EP: 50µ" EXTRA HEAVY GOLD CENTER CONTACT, PASSIVATED OUTER BODY



EXPLODED VIEW
NOT TO SCALE
(FOR CLARITY ONLY)

NOTES:

- MATERIAL:
BODY, BUSHING, COUPLING & CLAMP NUTS: STAINLESS STEEL.
CONTACTS & LOCK RING: BERYLLIUM COPPER.
GASKET: SILICONE RUBBER.
INSULATORS: ULTEM.
- FINISH:
BODY, BUSHING, COUPLING CLAMP NUTS: PASSIVATED.
CONTACTS: GOLD OVER NICKEL PLATE,
50 µ" MIN GOLD OVER 50 µ" MIN NICKEL.
- PCI P/N: 3850.

UNLESS OTHERWISE SPECIFIED,
DIMENSIONS ARE IN INCHES.
TOLERANCES ARE:
DECIMALS ANGLES
.XX: ±.01 [0.3] 1°
.XXX: ±.005 [0.13]
.XXXX: ±.0005 [0.013]

PROPRIETARY NOTE
THIS DOCUMENT CONTAINS CONFIDENTIAL AND PROPRIETARY INFORMATION AND ALL DESIGN, MANUFACTURING, REPRODUCTION, USE, PATENT RIGHTS AND SALES RIGHTS ARE EXPRESSLY RESERVED BY SAMTEC, INC. THIS DOCUMENT SHALL NOT BE DISCLOSED, IN WHOLE OR PART, TO ANY UNAUTHORIZED PERSON OR ENTITY NOR REPRODUCED, TRANSFERRED OR INCORPORATED IN ANY OTHER PROJECT IN ANY MANNER WITHOUT THE EXPRESS WRITTEN CONSENT OF SAMTEC, INC.



520 PARK EAST BLVD, NEW ALBANY, IN 47150
PHONE: 812-944-6733 FAX: 812-948-5047
e-Mail: info@SAMTEC.com code 55322

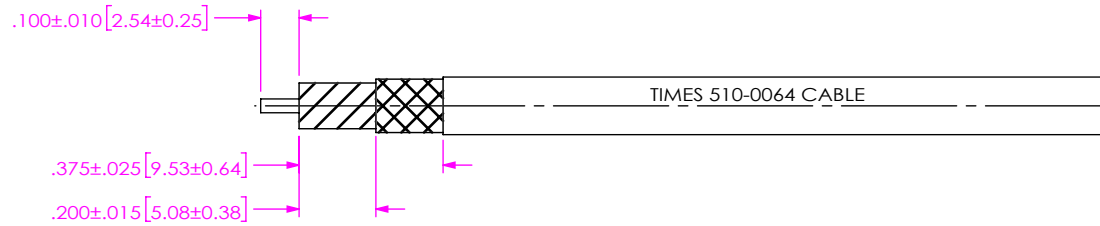
DO NOT SCALE DRAWING

SHEET SCALE: 2:1

DESCRIPTION: 2.92MM PLUG, SOLDER CLAMP FOR TIMES 510-0064 CABLE

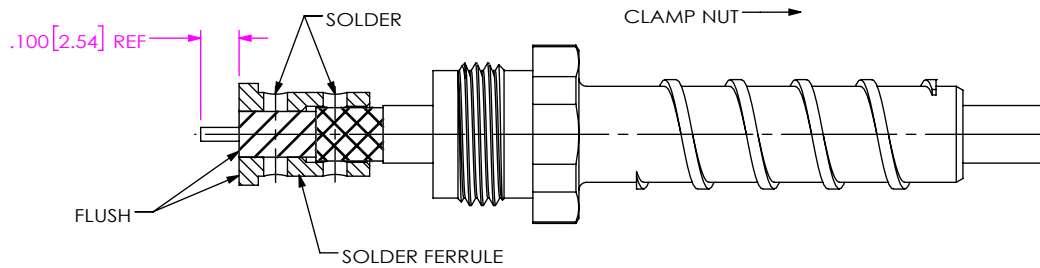
DWG. NO. PRF92-P-C-EP-140C-SS

BY: HENSON T 08/31/2020 SHEET 1 OF 3



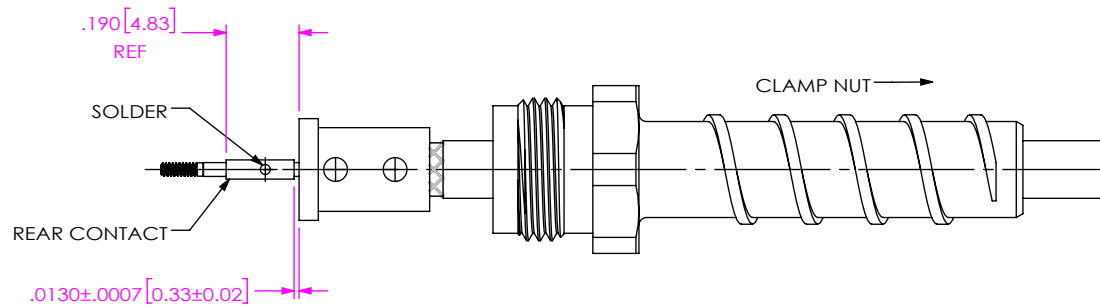
1. TRIM CABLE TO EXPOSE BRAID, FOIL AND CENTER CONDUCTOR AS SHOWN.

IN-PROCESS 1




- 2A. SLIDE CLAMP NUT OVER CABLE AS SHOWN.
- 2B. INSERT CABLE INTO FERRULE UNTIL FLUSH WITH FACE INDICATED AND SOLDER TO CABLE BRAID AND FOIL WHERE INDICATED.

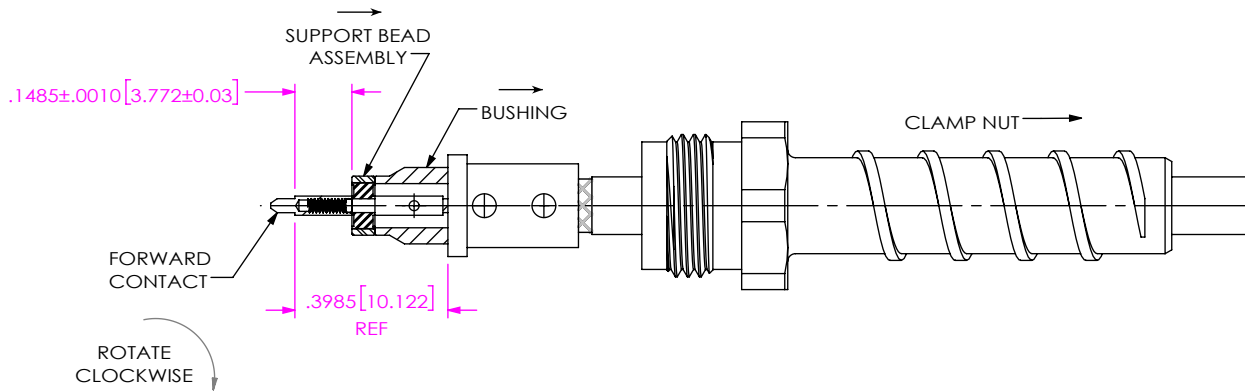
IN-PROCESS 2



3. PRE-TIN EXPOSED CABLE CENTER CONDUCTOR AND SOLDER REAR CONTACT WHERE SHOWN WITH GAP INDICATED.

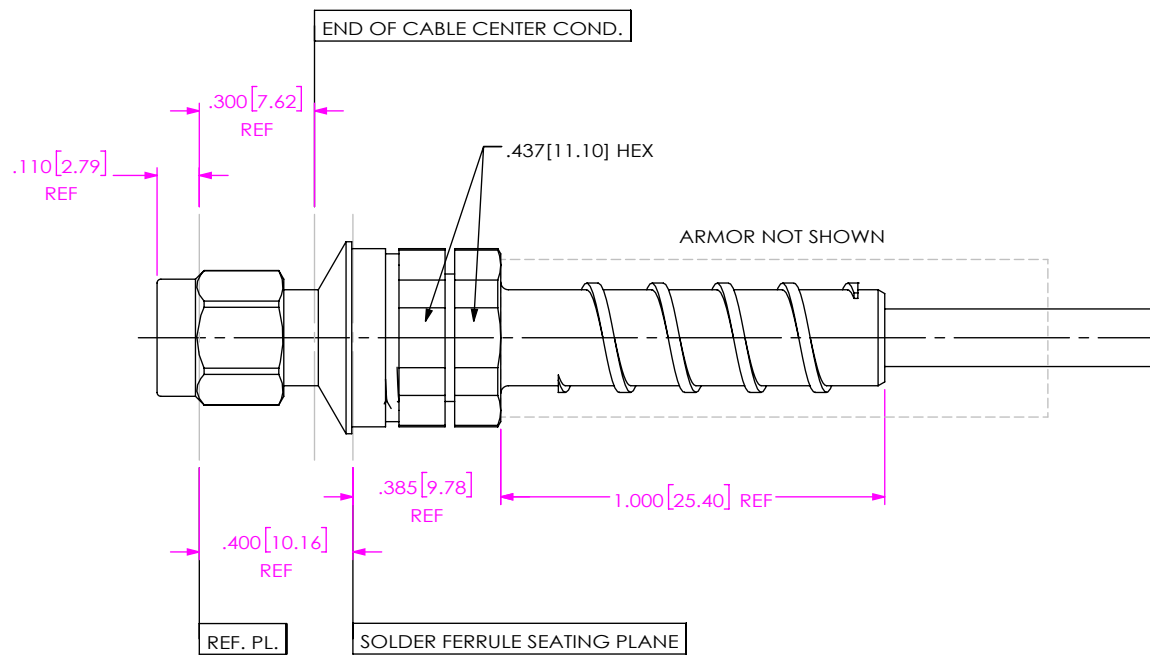
IN-PROCESS 3

<p>PROPRIETARY NOTE</p> <p>THIS DOCUMENT CONTAINS CONFIDENTIAL AND PROPRIETARY INFORMATION AND ALL DESIGN, MANUFACTURING, REPRODUCTION, USE, PATENT RIGHTS AND SALES RIGHTS ARE EXPRESSLY RESERVED BY SAMTEC, INC. THIS DOCUMENT SHALL NOT BE DISCLOSED, IN WHOLE OR PART, TO ANY UNAUTHORIZED PERSON OR ENTITY NOR REPRODUCED, TRANSFERRED OR INCORPORATED IN ANY OTHER PROJECT IN ANY MANNER WITHOUT THE EXPRESS WRITTEN CONSENT OF SAMTEC, INC.</p>	 <p>520 PARK EAST BLVD, NEW ALBANY, IN 47150 PHONE: 812-944-6733 FAX: 812-948-5047 e-Mail info@SAMTEC.com code 55322</p>
<p>DO NOT SCALE DRAWING</p> <p>SHEET SCALE: 2:1</p>	<p>DESCRIPTION: 2.92MM PLUG, SOLDER CLAMP FOR TIMES 510-0064 CABLE</p>
	<p>DWG. NO. PRF92-P-C-EP-140C-SS</p> <p>BY: HENSON T 08/31/2020 SHEET 2 OF 3</p>



- 4A. INSERT BUSHING AGAINST FERRULE FACE IN ORIENTATION SHOWN.
- 4B. INSTALL SUPPORT BEAD ASSEMBLY ONTO REAR CONTACT STUD AGAINST FACE OF BUSHING AS SHOWN.
- 4C. APPLY CONDUCTIVE EPOXY TO REAR CONTACT EXTERNAL THREADS AND THREAD ON FWD CONTACT UNTIL FIRMLY SEATED AGAINST SUPPORT BEAD AND BUSHING IS HELD FIRMLY AGAINST FERRULE FACE.

IN-PROCESS 4



- 5A. THREAD CABLE ARMOR ONTO CLAMP NUT UNTIL SEATED.
- 5B. INSERT CABLE, CONTACT & BUSHING SUB-ASSEMBLY INTO CONNECTOR UNTIL SEATED AND TIGHTEN CLAMP NUT TO 35-45 IN-LBS.

IN-PROCESS 5

<p>DO NOT SCALE DRAWING</p> <p>SHEET SCALE: 4:1</p>	<p>PROPRIETARY NOTE</p> <p>THIS DOCUMENT CONTAINS CONFIDENTIAL AND PROPRIETARY INFORMATION AND ALL DESIGN, MANUFACTURING, REPRODUCTION, USE, PATENT RIGHTS AND SALES RIGHTS ARE EXPRESSLY RESERVED BY SAMTEC, INC. THIS DOCUMENT SHALL NOT BE DISCLOSED, IN WHOLE OR PART, TO ANY UNAUTHORIZED PERSON OR ENTITY NOR REPRODUCED, TRANSFERRED OR INCORPORATED IN ANY OTHER PROJECT IN ANY MANNER WITHOUT THE EXPRESS WRITTEN CONSENT OF SAMTEC, INC.</p>	<p>samtec</p> <p>520 PARK EAST BLVD, NEW ALBANY, IN 47150 PHONE: 812-944-6733 FAX: 812-948-5047 e-Mail info@SAMTEC.com code 55322</p>
	<p>DESCRIPTION: 2.92MM PLUG, SOLDER CLAMP FOR TIMES 510-0064 CABLE</p>	
	<p>DWG. NO. PRF92-P-C-EP-140C-SS</p>	
<p>BY: HENSON T 08/31/2020</p>		<p>SHEET 3 OF 3</p>