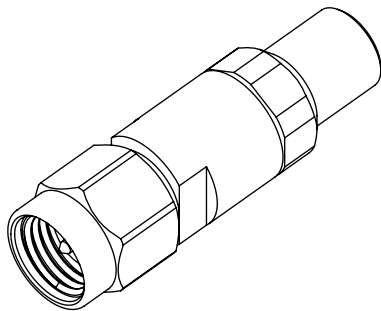


DO NOT SCALE FROM THIS PRINT



DESIGNED & DIMENSIONED IN INCHES[MILLIMETERS]

PRF92-P-C-EP-160A-SS

SERIES  
-92: 2.92MM

GENDER  
-P: PLUG

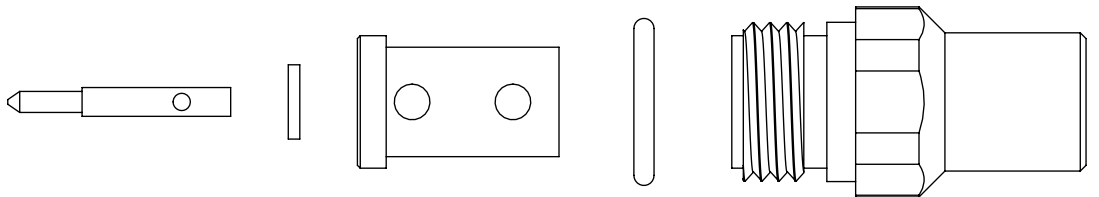
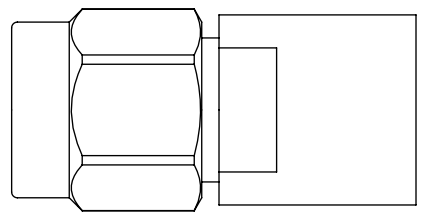
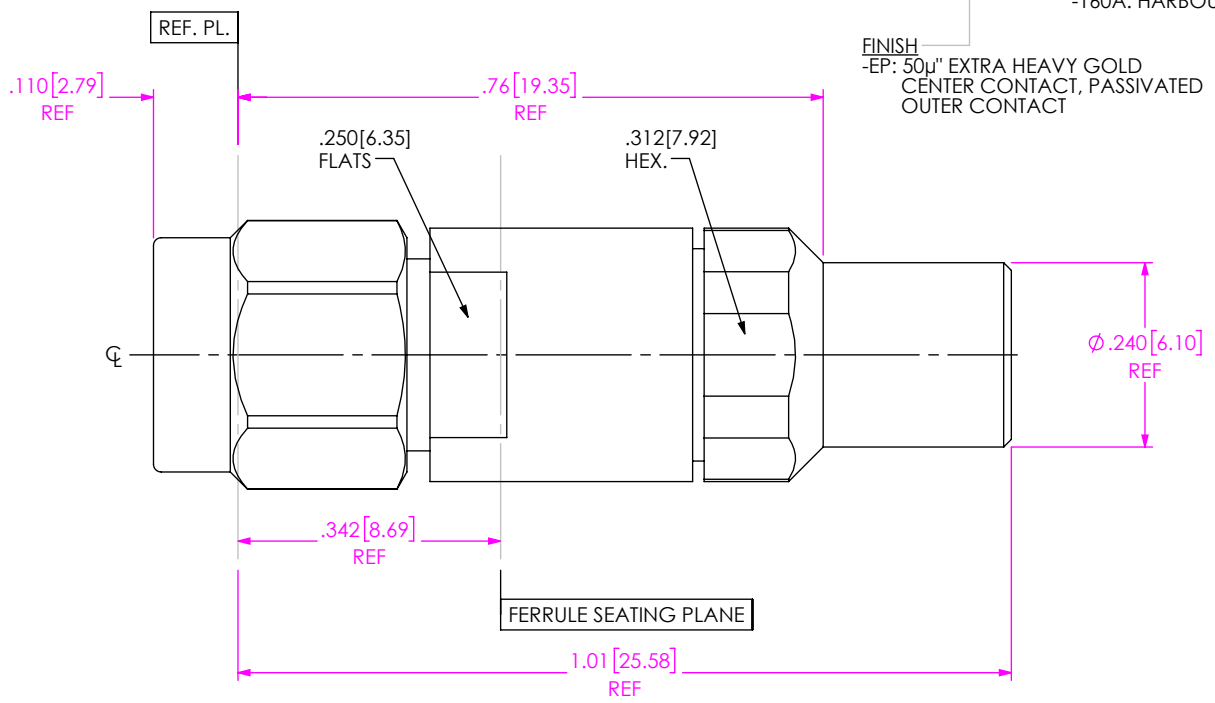
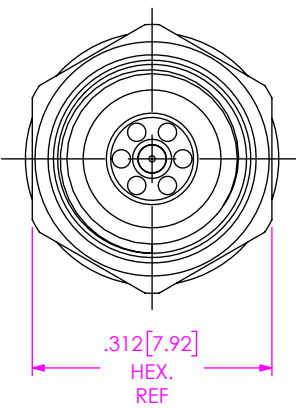
TYPE  
-C: CABLE

TERMINATION  
-S: SOLDER CLAMP

ORIENTATION  
-S: STRAIGHT


CABLE TYPE  
-160A: HARBOUR LL160-40GHZ

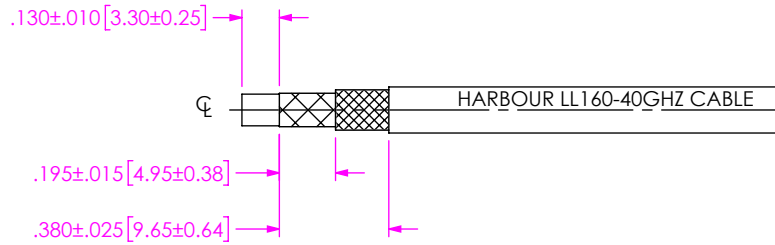
FINISH  
-EP: 50µ" EXTRA HEAVY GOLD CENTER CONTACT, PASSIVATED OUTER CONTACT



EXPLODED VIEW  
NOT TO SCALE  
(FOR CLARITY ONLY)

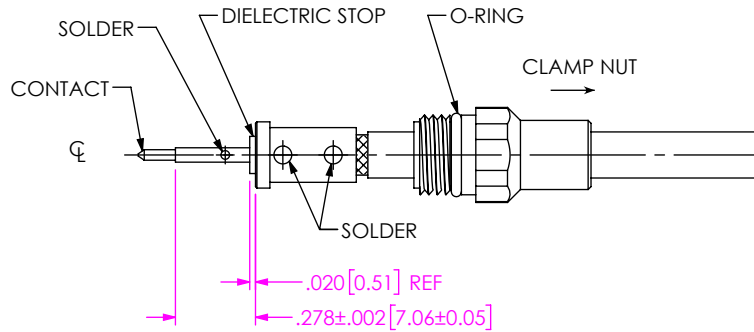
- NOTES:
- MATERIAL:  
BODIES, COUPLING & CLAMP NUTS: STAINLESS STEEL.  
CONTACT & LOCK RING: BERYLLIUM COPPER.  
SOLDER FERRULE: BRASS.  
GASKET & O-RING: SILICONE RUBBER.  
DIELECTRIC BEADS: ULTEM.
  - FINISH:  
BODIES, COUPLING & CLAMP NUTS: PASSIVATED.  
CONTACT & SOLDER FERRULE: GOLD OVER NICKEL PLATE, 50 µIN MIN GOLD OVER 50 µIN MIN NICKEL.
  - PCI P/N: 4059.

UNLESS OTHERWISE SPECIFIED, DIMENSIONS ARE IN INCHES. TOLERANCES ARE: DECIMALS                      ANGLES .XX: ±.01 [0.3] .XXX: ±.005 [0.13] .XXXX: ±.0005 [0.013]	* PROPRIETARY NOTE * THIS DOCUMENT CONTAINS CONFIDENTIAL AND PROPRIETARY INFORMATION AND ALL DESIGN, MANUFACTURING, REPRODUCTION, USE, PATENT RIGHTS AND SALES RIGHTS ARE EXPRESSLY RESERVED BY SAMTEC, INC. THIS DOCUMENT SHALL NOT BE DISCLOSED, IN WHOLE OR PART, TO ANY UNAUTHORIZED PERSON OR ENTITY NOR REPRODUCED, TRANSFERRED OR INCORPORATED IN ANY OTHER PROJECT IN ANY MANNER WITHOUT THE EXPRESS WRITTEN CONSENT OF SAMTEC, INC.	 520 PARK EAST BLVD, NEW ALBANY, IN 47150 PHONE: 812-944-6733    FAX: 812-948-5047 e-Mail: info@SAMTEC.com    code 55322	
		DO NOT SCALE DRAWING                      SHEET SCALE: 3:1	DESCRIPTION: 2.92MM PLUG, SOLDER CLAMP FOR HARBOUR LL160-40GHZ CABLE
		DWG. NO. PRF92-P-C-EP-160A-SS	BY: WILLY Y                      4/8/2022                      SHEET 1 OF 2



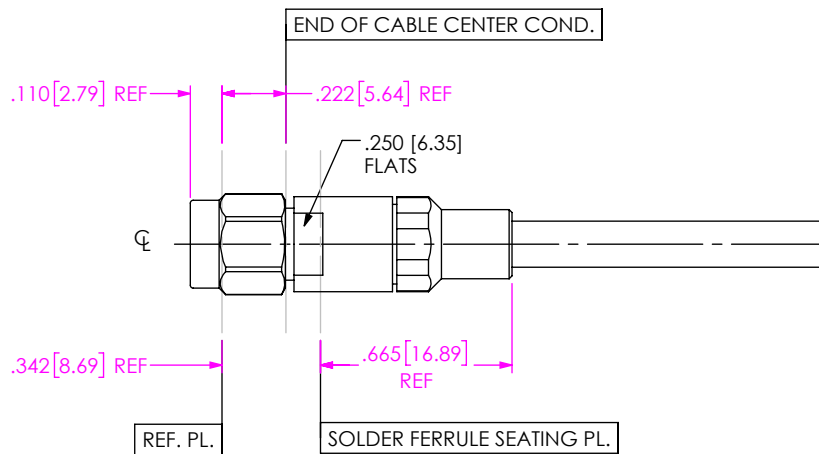
1. TRIM CABLE TO EXPOSE DIELECTRIC AND BRAIDS AS SHOWN.

IN-PROCESS 1



- 2A. INSTALL O-RING ONTO CLAMP NUT WHERE SHOWN AND SLIDE CLAMP NUT OVER CABLE IN ORIENTATION SHOWN.
- 2B. INSERT CABLE INTO SOLDER FERRULE UNTIL INNER BRAID IS SEATED AND SOLDER CABLE BRAIDS WHERE SHOWN.
- 2C. TRIM CABLE DIELECTRIC FLUSH WITH FACE OF SOLDER FERRULE.
- 2D. SLIDE DIELECTRIC STOP ( $\phi .129 \text{ OD}$ ) OVER CABLE CENTER CONDUCTOR AND SOLDER CONTACT FLUSH TO STOP TO DIMENSION SHOWN.

IN-PROCESS 2



3. INSERT CABLE/CONTACT SUB-ASSEMBLY INTO CONNECTOR UNTIL SEATED AND TIGHTEN CLAMP NUT TO 25-35 IN-LBS.

IN-PROCESS 3

<p>DO NOT SCALE DRAWING</p> <p>SHEET SCALE: 1.5:1</p>	<p><b>PROPRIETARY NOTE</b></p> <p>THIS DOCUMENT CONTAINS CONFIDENTIAL AND PROPRIETARY INFORMATION AND ALL DESIGN, MANUFACTURING, REPRODUCTION, USE, PATENT RIGHTS AND SALES RIGHTS ARE EXPRESSLY RESERVED BY SAMTEC, INC. THIS DOCUMENT SHALL NOT BE DISCLOSED, IN WHOLE OR PART, TO ANY UNAUTHORIZED PERSON OR ENTITY NOR REPRODUCED, TRANSFERRED OR INCORPORATED IN ANY OTHER PROJECT IN ANY MANNER WITHOUT THE EXPRESS WRITTEN CONSENT OF SAMTEC, INC.</p>	<p><b>samtec</b></p> <p>520 PARK EAST BLVD, NEW ALBANY, IN 47150                  PHONE: 812-944-6733 FAX: 812-948-5047                  e-Mail info@SAMTEC.com code 55322</p>
	<p>DESCRIPTION: 2.92MM PLUG, SOLDER CLAMP FOR HARBOUR LL160-40GHZ CABLE</p>	
	<p>DWG. NO. PRF92-P-C-EP-160A-SS</p>	
<p>BY: WILLY Y</p>	<p>4/8/2022</p>	<p>SHEET 2 OF 2</p>