

DO NOT
SCALE FROM
THIS PRINT

DESIGNED & DIMENSIONED
IN INCHES[MILLIMETERS]

PRF92-P-C-EP-200-SS

SERIES
-92: 2.92mm

GENDER
-P: PLUG

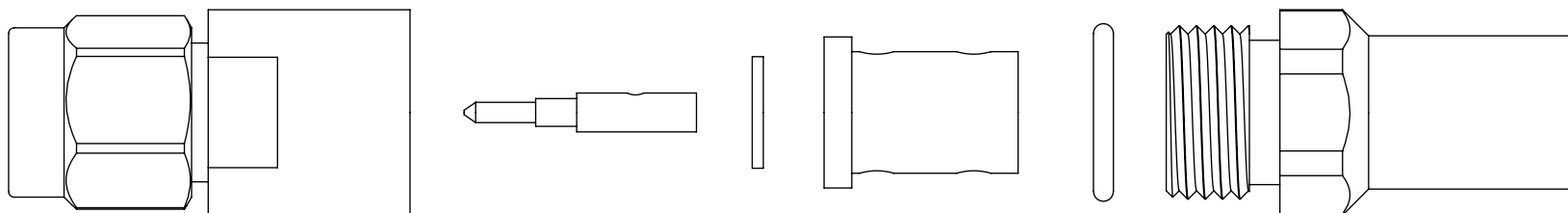
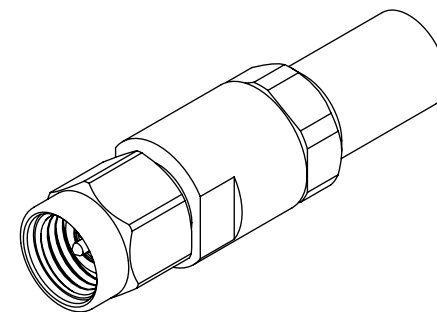
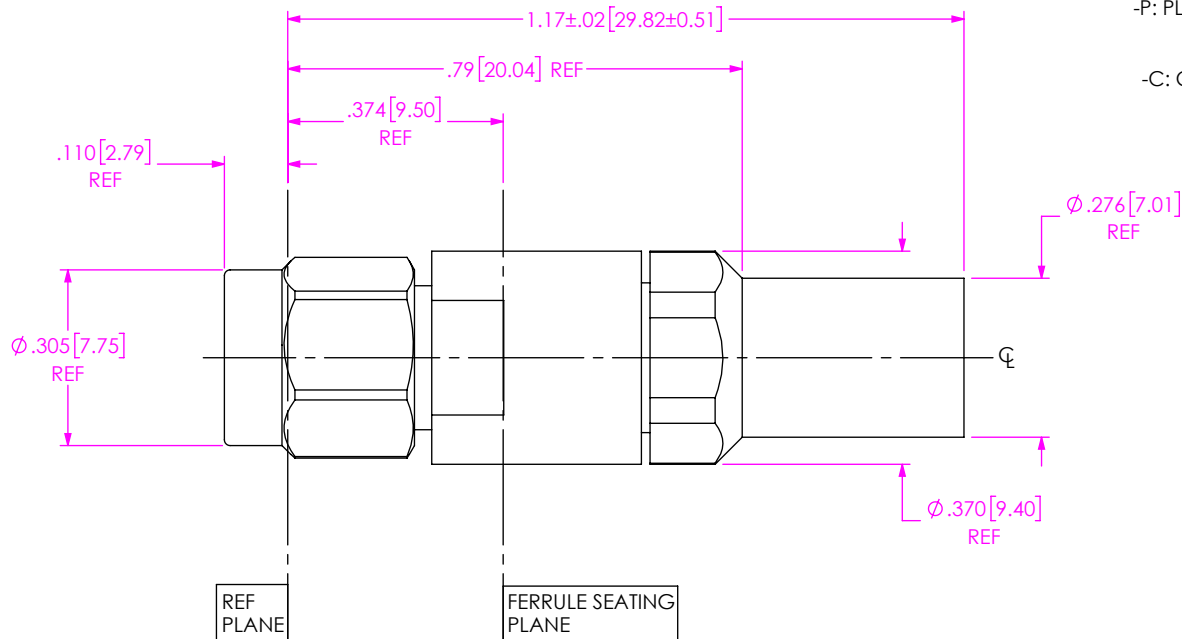
TYPE
-C: CABLE

TERMINATION
-S: SOLDER CLAMP

ORIENTATION
-S: STRAIGHT

CABLE TYPE
-200: TIMES MICRO MAX GAIN 200

PLATING
-EP: 50µ" EXTRA HEAVY GOLD
CENTER CONTACT, PASSIVATED
OUTER CONTACT



EXPLODED VIEW
NOT TO SCALE
(FOR CLARITY ONLY)

NOTES:

1. MATERIAL:

BODY, CLAMP NUT, COUPLING NUT, LOCK RING: STAINLESS STEEL.
GASKET, O-RING: SILICONE RUBBER.
BEAD: POLYPHENYLENE OXIDE.
SOLDER FERRULE: BRASS ALLOY
CONTACT, LOCK RING: BERYLLIUM COPPER.

2. FINISH:

BODY, CLAMP NUT, COUPLING NUT, LOCK RING: PASSIVATED.
CONTACT, SOLDER FERRULE: GOLD OVER NICKEL PLATE,
50 µIN MIN GOLD OVER 50 µIN MIN NICKEL.

3. PCI P/N: 3963.

UNLESS OTHERWISE SPECIFIED,
DIMENSIONS ARE IN INCHES.

TOLERANCES ARE:

DECIMALS ANGLES
.XX: ±.01
.XXX: ±.005
.XXXX: ±.0005

PROPRIETARY NOTE

THIS DOCUMENT CONTAINS CONFIDENTIAL AND PROPRIETARY INFORMATION AND ALL DESIGN, MANUFACTURING, REPRODUCTION, USE, PATENT RIGHTS AND SALES RIGHTS ARE EXPRESSLY RESERVED BY SAMTEC, INC. THIS DOCUMENT SHALL NOT BE DISCLOSED, IN WHOLE OR PART, TO ANY UNAUTHORIZED PERSON OR ENTITY NOR REPRODUCED, TRANSFERRED OR INCORPORATED IN ANY OTHER PROJECT IN ANY MANNER WITHOUT THE EXPRESS WRITTEN CONSENT OF SAMTEC, INC.



520 PARK EAST BLVD., NEW ALBANY, IN 47150
PHONE: 812-944-6733 FAX: 812-948-5047
e-Mail: info@SAMTEC.com code 55322

DO NOT SCALE DRAWING

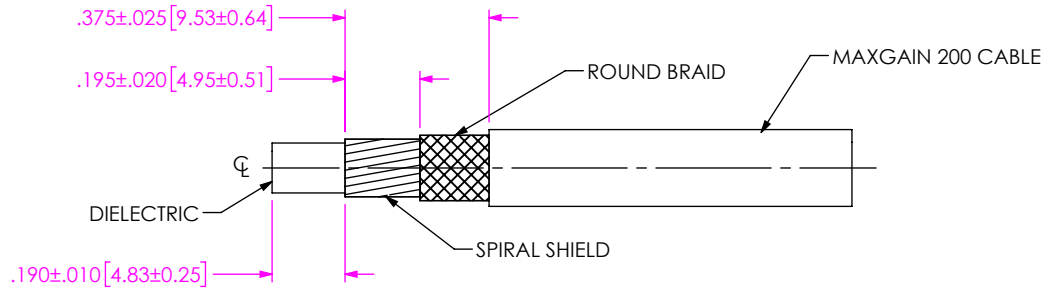
SHEET SCALE: 3:1

DESCRIPTION: 2.92MM PLUG, SOLDER CLAMP
FOR TIMES MAXGAIN 200 CABLE

DWG. NO. PRF92-P-C-EP-200-SS

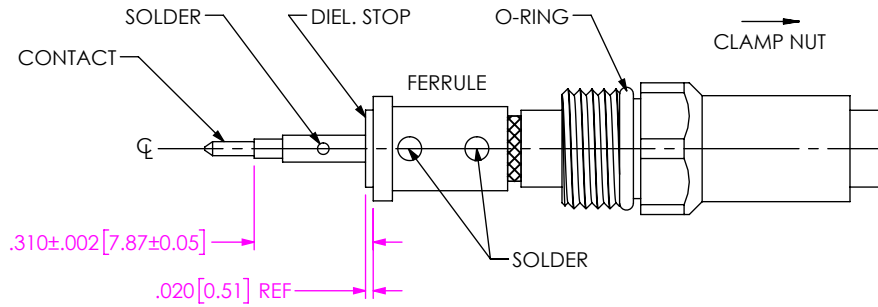
BY: SAMUEL C 05/18/2019 SHEET 1 OF 2

REVISION A



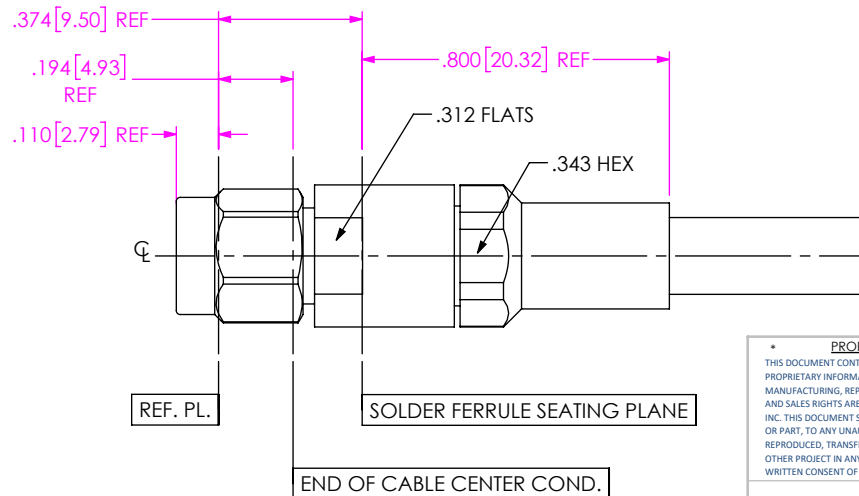
1A. TRIM CABLE TO EXPOSE DIELECTRIC CORE.
SPIRAL SHIELD AND BRAID AS SHOWN.

IN-PROCESS VIEW 1



- 2A. SLIDE CLAMP NUT OVER CABLE IN ORIENTATION AS SHOWN.
- 2B. INSERT CABLE INTO SOLDER FERRULE UNTIL INNER SHIELD SEATS AND SOLDER TO BRAIDS WHERE SHOWN.
- 2C. TRIM CABLE DIELECTRIC FLUSH WITH FACE OF FERRULE.
- 2D. SLIDE DIELECTRIC STOP OVER CABLE CENTER CONDUCTOR AND SOLDER CONTACT FLUSH TO STOP TO DIMENSION SHOWN.

IN-PROCESS VIEW 2



3A. INSERT CABLE/CONTACT SUB-ASSEMBLY INTO CONNECTOR UNTIL SEATED AND TIGHTEN CLAMP NUT TO 25-35 IN-LBS.

IN-PROCESS VIEW 3

PROPRIETARY NOTE
THIS DOCUMENT CONTAINS CONFIDENTIAL AND PROPRIETARY INFORMATION AND ALL DESIGN, MANUFACTURING, REPRODUCTION, USE, PATENT RIGHTS AND SALES RIGHTS ARE EXPRESSLY RESERVED BY SAMTEC, INC. THIS DOCUMENT SHALL NOT BE DISCLOSED, IN WHOLE OR PART, TO ANY UNAUTHORIZED PERSON OR ENTITY NOR REPRODUCED, TRANSFERRED OR INCORPORATED IN ANY OTHER PROJECT IN ANY MANNER WITHOUT THE EXPRESS WRITTEN CONSENT OF SAMTEC, INC.

DO NOT SCALE DRAWING
SHEET SCALE: 2:1



520 PARK EAST BLVD, NEW ALBANY, IN 47150
PHONE: 812-944-6733 FAX: 812-948-5047
e-Mail info@SAMTEC.com code 55322

DESCRIPTION: 2.92MM PLUG, SOLDER CLAMP FOR TIMES MAXGAIN 200 CABLE

DWG. NO. PRF92-P-C-EP-200-SS

BY: SAMUEL C 05/18/2019 SHEET 2 OF 2