

DO NOT SCALE FROM THIS PRINT

DESIGNED & DIMENSIONED IN INCHES[MILLIMETERS]

PRFBA-292-J-SMPM-J-S-1

ADAPTER TYPE
-BA: BETWEEN SERIES ADAPTER

END 1 SERIES
-292: 2.92mm

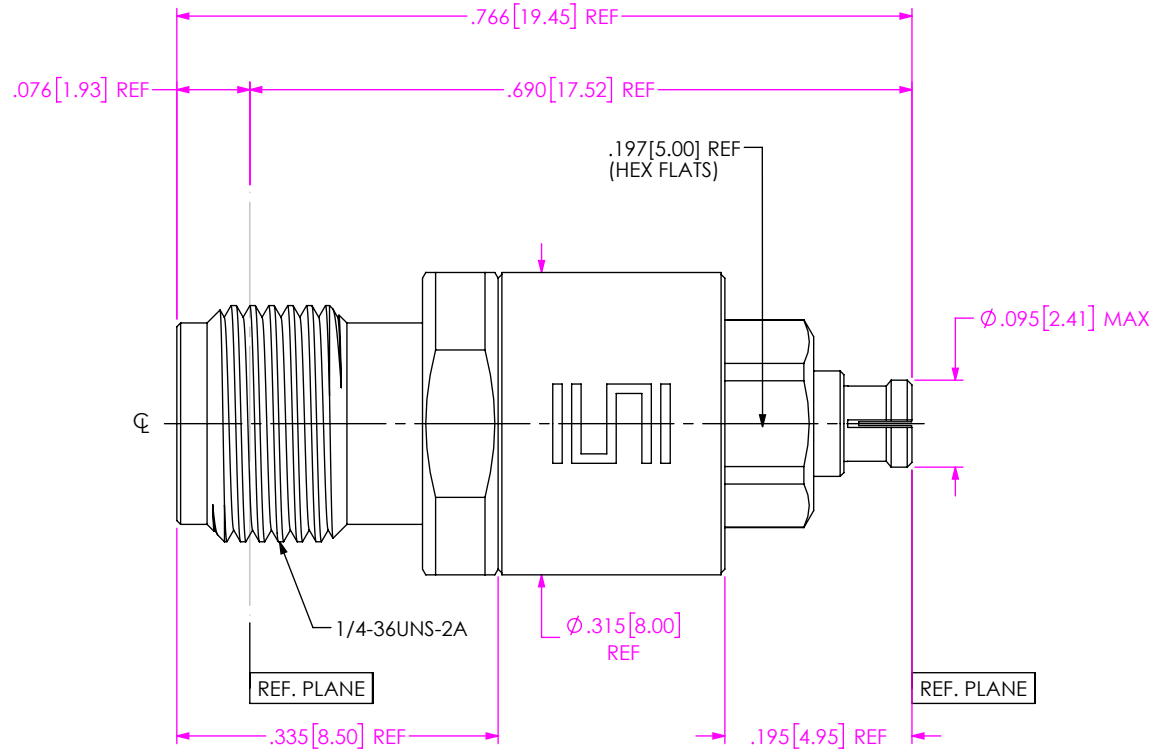
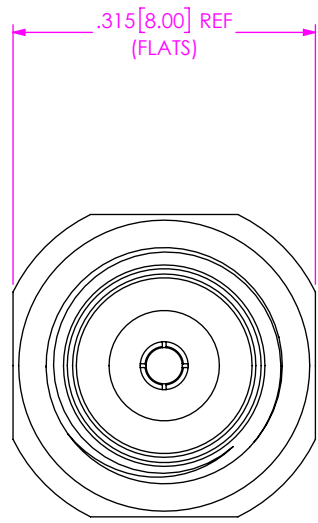
END 1 GENDER
-J: JACK

OPTION
-1


ORIENTATION
-S: STRAIGHT

END 2 GENDER
-J: JACK

END 2 SERIES
-SMPM



- NOTES:
- MATERIAL:
BODY: STAINLESS STEEL (2.92MM JACK), BERYLLIUM COPPER (SMPM JACK)
SOCKET: BERYLLIUM COPPER
BEAD: PEI
 - FINISH:
BODY: PASSIVATED (2.92MM JACK), GOLD (SMPM JACK)
SOCKET: GOLD
 - VSWR DC – 40GHz ___ 1.30:1 MAX
 - INSERTION LOSS .06XSQRT(MAX FREQ) MAX

<p>UNLESS OTHERWISE SPECIFIED, DIMENSIONS ARE IN INCHES.</p> <p>TOLERANCES ARE:</p> <p>DECIMALS ANGLES</p> <p>.XX: ±.01 [0.3] 1°</p> <p>.XXX: ±.005 [0.13]</p> <p>.XXXX: ±.0005 [0.013]</p>	<p>PROPRIETARY NOTE</p> <p>THIS DOCUMENT CONTAINS CONFIDENTIAL AND PROPRIETARY INFORMATION AND ALL DESIGN, MANUFACTURING, REPRODUCTION, USE, PATENT RIGHTS AND SALES RIGHTS ARE EXPRESSLY RESERVED BY SAMTEC, INC. THIS DOCUMENT SHALL NOT BE DISCLOSED, IN WHOLE OR PART, TO ANY UNAUTHORIZED PERSON OR ENTITY NOR REPRODUCED, TRANSFERRED OR INCORPORATED IN ANY OTHER PROJECT IN ANY MANNER WITHOUT THE EXPRESS WRITTEN CONSENT OF SAMTEC, INC.</p>	 <p>520 PARK EAST BLVD, NEW ALBANY, IN 47150 PHONE: 812-944-6733 FAX: 812-948-5047 e-Mail: info@SAMTEC.com code 55322</p>
<p>DO NOT SCALE DRAWING</p>	<p>SHEET SCALE: 5:1</p>	<p>DESCRIPTION: ADAPTER, 2.92MM JACK TO SMPM JACK</p>
<p>DWG. NO. PRFBA-292-J-SMPM-J-S-1</p>		<p>BY: WILLY Y 3/9/2022 SHEET 1 OF 1</p>