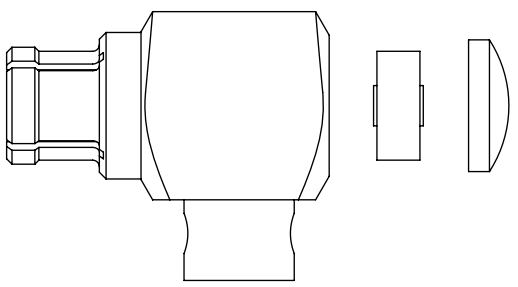
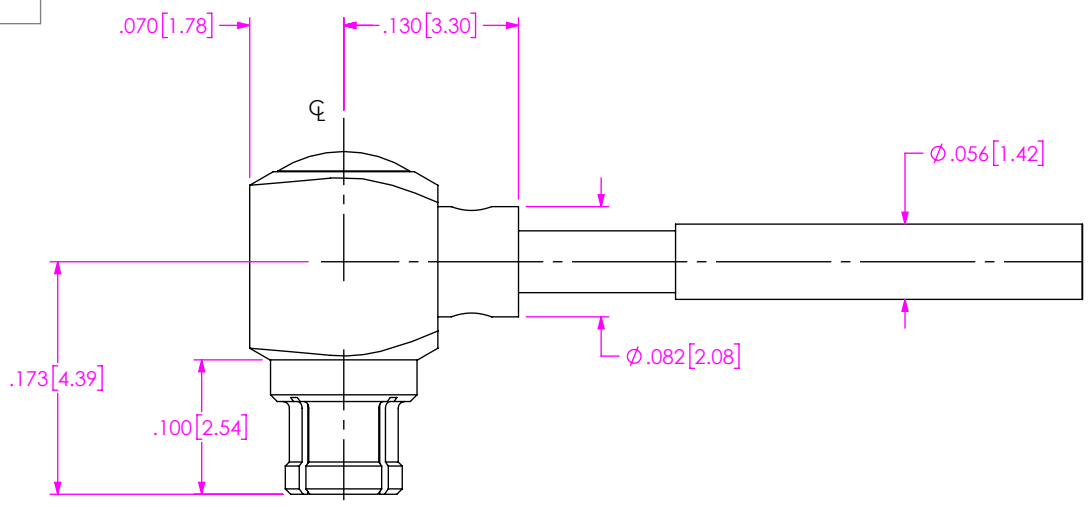


DO NOT SCALE FROM THIS PRINT

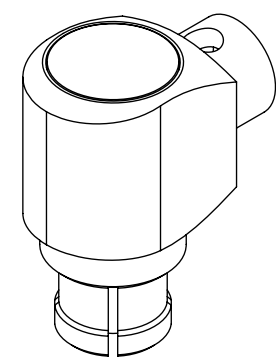
DESIGNED & DIMENSIONED IN INCHES[MILLIMETERS]  
ALL DIMENSIONS REFERENCE EXCEPT AS SHOWN



EXPLODED VIEW  
NOT TO SCALE  
(FOR CLARITY ONLY)

PRFM0-J-C-XX-047A-RD-1

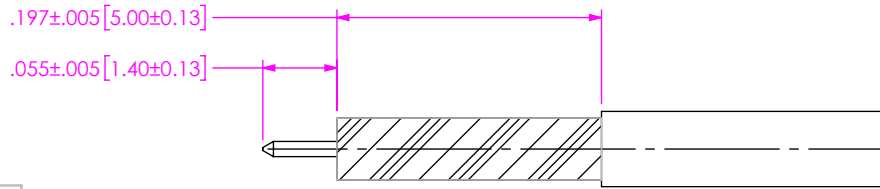
- SERIES  
-M0: SMPM
- GENDER  
-J: JACK
- TYPE  
-C: CABLE
- PLATING  
-EE: 50µ" EXTRA HEAVY GOLD  
CENTER CONTACT, 50µ" EXTRA HEAVY GOLD OUTER CONTACT
- OPTION  
-1
- TERMINATION  
-D: DIRECT SOLDER
- ORIENTATION  
-R: RIGHT ANGLE
- CABLE TYPE  
-047A: CCA-047-PFA



NOTES:

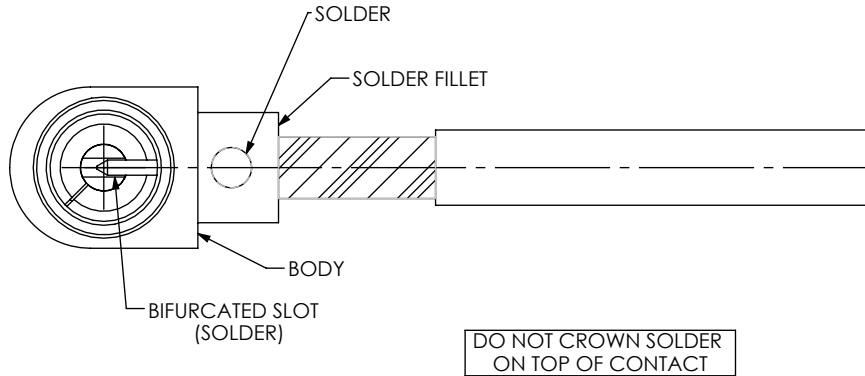
1. MATERIAL:  
BODY, CONTACT: BERYLLIUM COPPER  
END CAP: BRASS ALLOY  
INSULATOR: PTFE  
BEAD: ULTE 1000
2. FINISH:  
BODY, CONTACT, END CAP: 50µ" MIN. GOLD OVER 50µ" MIN. NICKEL PLATE

UNLESS OTHERWISE SPECIFIED, DIMENSIONS ARE IN INCHES. TOLERANCES ARE: DECIMALS                      ANGLES .XX: ±.01 [0.3]                      1° .XXX: ±.005 [0.13] .XXXX: ±.0005 [0.013]	* PROPRIETARY NOTE * THIS DOCUMENT CONTAINS CONFIDENTIAL AND PROPRIETARY INFORMATION AND ALL DESIGN, MANUFACTURING, REPRODUCTION, USE, PATENT RIGHTS AND SALES RIGHTS ARE EXPRESSLY RESERVED BY SAMTEC, INC. THIS DOCUMENT SHALL NOT BE DISCLOSED, IN WHOLE OR PART, TO ANY UNAUTHORIZED PERSON OR ENTITY NOR REPRODUCED, TRANSFERRED OR INCORPORATED IN ANY OTHER PROJECT IN ANY MANNER WITHOUT THE EXPRESS WRITTEN CONSENT OF SAMTEC, INC.	520 PARK EAST BLVD, NEW ALBANY, IN 47150 PHONE: 812-944-6733    FAX: 812-948-5047 e-Mail: info@SAMTEC.com    code 55322



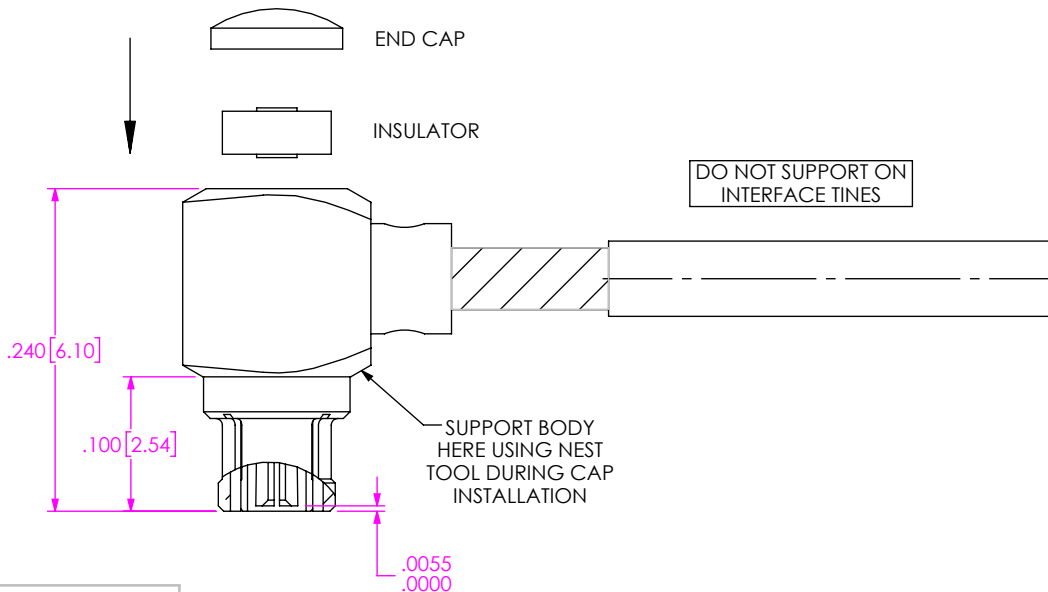
1. TRIM CABLE AS SHOWN.

IN-PROCESS 1



- 2A. INSERT CABLE INTO BODY. SOLDER CABLE BRAIDS TO BODY WHERE SHOWN.
- 2B. SOLDER CABLE CENTER CONDUCTOR TO CONTACT SLOT COMPLETELY FILLING SLOT BUT MINIMIZING EXCESS FLOW ONTO CONTACT OUTER SURFACE.

IN-PROCESS 2



- 3A. INSTALL INSULATOR AND END CAP INTO BODY AS SHOWN AND PRESS CAP FLUSH TO BODY.
- 3B. INSPECT CONNECTOR CONTACT INTERFACE RECESSION.

IN-PROCESS 3

**PROPRIETARY NOTE**  
 THIS DOCUMENT CONTAINS CONFIDENTIAL AND PROPRIETARY INFORMATION AND ALL DESIGN, MANUFACTURING, REPRODUCTION, USE, PATENT RIGHTS AND SALES RIGHTS ARE EXPRESSLY RESERVED BY SAMTEC, INC. THIS DOCUMENT SHALL NOT BE DISCLOSED, IN WHOLE OR PART, TO ANY UNAUTHORIZED PERSON OR ENTITY NOR REPRODUCED, TRANSFERRED OR INCORPORATED IN ANY OTHER PROJECT IN ANY MANNER WITHOUT THE EXPRESS WRITTEN CONSENT OF SAMTEC, INC.



520 PARK EAST BLVD, NEW ALBANY, IN 47150  
 PHONE: 812-944-6733 FAX: 812-948-5047  
 e-Mail info@SAMTEC.com code 55322

DO NOT SCALE DRAWING

SHEET SCALE: 7:1

DESCRIPTION: SMPM SOCKET, MITER RT. ANGLE, DIRECT SOLDER FOR TEMP-FLEX 047SC-2901 CABLE

DWG. NO.

**PRFM0-J-C-XX-047A-RD-1**

BY: WILLY Y 12/14/2023 SHEET 2 OF 2