

DO NOT  
SCALE FROM  
THIS PRINT

PRFM0-J-C-XX-047A-SD-1

SERIES  
-M0: SMPM

GENDER  
-J: JACK

TYPE  
-C: CABLE

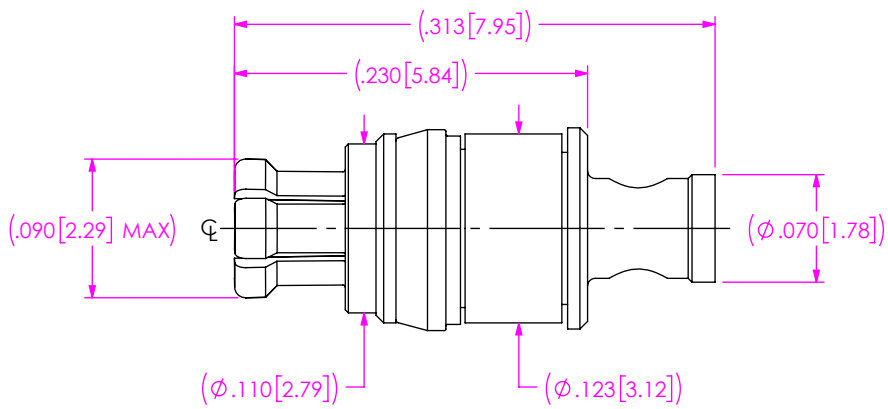
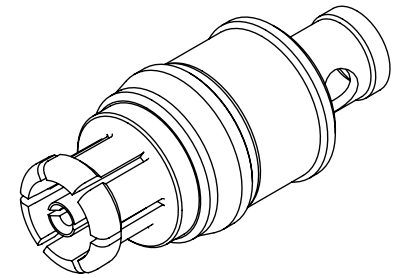
FINISH  
-EE: 50µ" HEAVY GOLD  
CENTER CONTACT, 50µ" EXTRA  
HEAVY GOLD OUTER BODY

OPTION  
-1


TERMINATION  
-D: DIRECT SOLDER

ORIENTATION  
-S: STRAIGHT

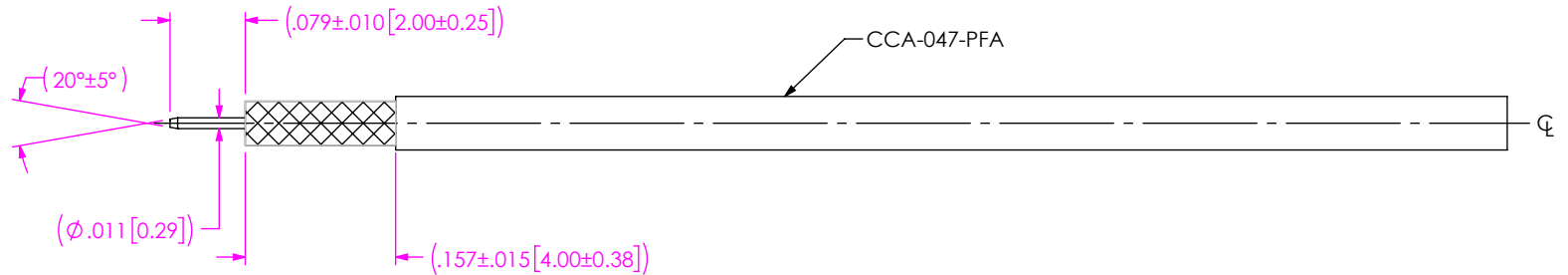
CABLE CALLOUT  
-047A: .047 STANDARD  
CCA-047-PFA



- NOTES:
- MATERIAL:  
BEAD: ULTEM.  
CONTACT, FERRULE, OUTER CONTACT: BERYLLIUM COPPER.  
RETAINING RING: STAINLESS STEEL.
  - FINISH:  
CONTACT, FERRULE, OUTER CONTACT: GOLD OVER NICKEL PLATE,  
50 µIN MIN GOLD OVER 50 µIN MIN NICKEL.  
RETAINING RING: 50 µIN MIN NICKEL PLATE.

<p>UNLESS OTHERWISE SPECIFIED, DIMENSIONS ARE IN INCHES. TOLERANCES ARE:</p> <p>DECIMALS      ANGLES</p> <p>.XX: ±.01            1°</p> <p>.XXX: ±.002</p> <p>.XXXX: ±.0005</p>	<p><b>PROPRIETARY NOTE</b></p> <p>THIS DOCUMENT CONTAINS CONFIDENTIAL AND PROPRIETARY INFORMATION AND ALL DESIGN, MANUFACTURING, REPRODUCTION, USE, PATENT RIGHTS AND SALES RIGHTS ARE EXPRESSLY RESERVED BY SAMTEC, INC. THIS DOCUMENT SHALL NOT BE DISCLOSED, IN WHOLE OR PART, TO ANY UNAUTHORIZED PERSON OR ENTITY NOR REPRODUCED, TRANSFERRED OR INCORPORATED IN ANY OTHER PROJECT IN ANY MANNER WITHOUT THE EXPRESS WRITTEN CONSENT OF SAMTEC, INC.</p>	 <p>520 PARK EAST BLVD, NEW ALBANY, IN 47150 PHONE: 812-944-6733    FAX: 812-948-5047 e-Mail: info@SAMTEC.com    code 55322</p>
<p>DO NOT SCALE DRAWING</p>	<p>SHEET SCALE: 8:1</p>	<p>DESCRIPTION: GANGED SMPM JACK ASSEMBLY FOR RF047-A</p> <p>DWG. NO. <b>PRFM0-J-C-XX-047A-SD-1</b></p> <p>BY: SAM H      1/22/2026      SHEET 1 OF 2</p>

# CABLE APPLICATION VIEWS




- 1A. TRIM CABLE TO EXPOSE OUTER BRAID AND CENTER CONDUCTOR AS SHOWN.
- 1B. POINT CENTER CONDUCTOR AS SHOWN.

## IN-PROCESS VIEW 1



- 2A. INSERT CABLE/STOP INTO CONNECTOR UNTIL SEATED (DO NOT FORCE) AND SOLDER AS SHOWN.

## IN-PROCESS VIEW 2

<p>PROPRIETARY NOTE</p> <p>THIS DOCUMENT CONTAINS CONFIDENTIAL AND PROPRIETARY INFORMATION AND ALL DESIGN, MANUFACTURING, REPRODUCTION, USE, PATENT RIGHTS AND SALES RIGHTS ARE EXPRESSLY RESERVED BY SAMTEC, INC. THIS DOCUMENT SHALL NOT BE DISCLOSED, IN WHOLE OR PART, TO ANY UNAUTHORIZED PERSON OR ENTITY NOR REPRODUCED, TRANSFERRED OR INCORPORATED IN ANY OTHER PROJECT IN ANY MANNER WITHOUT THE EXPRESS WRITTEN CONSENT OF SAMTEC, INC.</p>	 <p>520 PARK EAST BLVD, NEW ALBANY, IN 47150                  PHONE: 812-944-6733 FAX: 812-948-5047                  e-Mail: info@SAMTEC.com code 55322</p>		
	<p>DESCRIPTION:                  GANGED SMPM JACK ASSEMBLY FOR RF047-A</p>		
	<p>DWG. NO.                  PRFM0-J-C-XX-047A-SD-1</p>		
<p>DO NOT SCALE DRAWING</p> <p>SHEET SCALE: 5:1</p>	<p>BY: SAM H</p>	<p>1/22/2026</p>	<p>SHEET 2 OF 2</p>