

DO NOT  
SCALE FROM  
THIS PRINT

PRFM0-J-C-XX-047A-SD-3

SERIES  
-M0: SMPM

GENDER  
-J: JACK

TYPE  
-C: CABLE

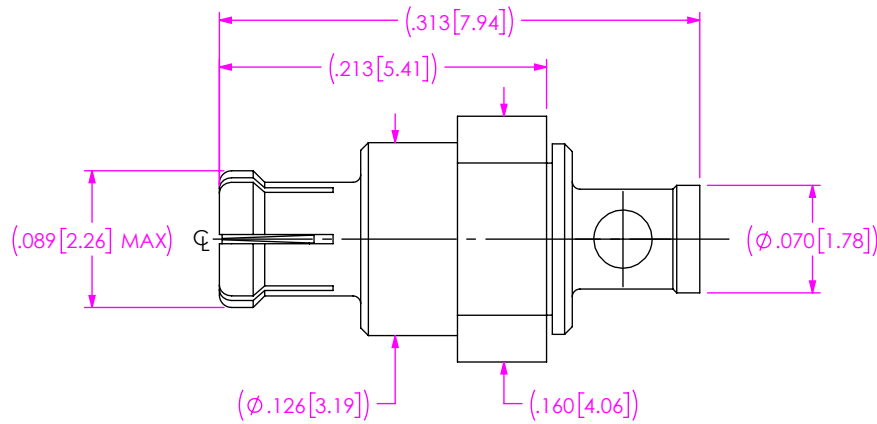
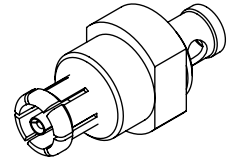
FINISH  
-EE: 50µ" HEAVY GOLD  
CENTER CONTACT, 50µ" EXTRA  
HEAVY GOLD OUTER BODY

OPTION  
-3

TERMINATION  
-D: DIRECT SOLDER

ORIENTATION  
-S: STRAIGHT

CABLE CALLOUT  
-047A: .047 STANDARD  
CCA-047-PFA



- NOTES:
- MATERIAL:  
BEAD: ULTEM.  
CONTACT, FERRULE, OUTER CONTACT: BERYLLIUM COPPER.
  - FINISH:  
CONTACT, FERRULE, OUTER CONTACT: GOLD OVER NICKEL PLATE,  
50 µIN MIN GOLD OVER 50 µIN MIN NICKEL.

UNLESS OTHERWISE SPECIFIED,  
DIMENSIONS ARE IN INCHES.

TOLERANCES ARE:

DECIMALS	ANGLES
.XX: ±.01	1°
.XXX: ±.002	
.XXXX: ±.0005	

**PROPRIETARY NOTE**

THIS DOCUMENT CONTAINS CONFIDENTIAL AND PROPRIETARY INFORMATION AND ALL DESIGN, MANUFACTURING, REPRODUCTION, USE, PATENT RIGHTS AND SALES RIGHTS ARE EXPRESSLY RESERVED BY SAMTEC, INC. THIS DOCUMENT SHALL NOT BE DISCLOSED, IN WHOLE OR PART, TO ANY UNAUTHORIZED PERSON OR ENTITY NOR REPRODUCED, TRANSFERRED OR INCORPORATED IN ANY OTHER PROJECT IN ANY MANNER WITHOUT THE EXPRESS WRITTEN CONSENT OF SAMTEC, INC.



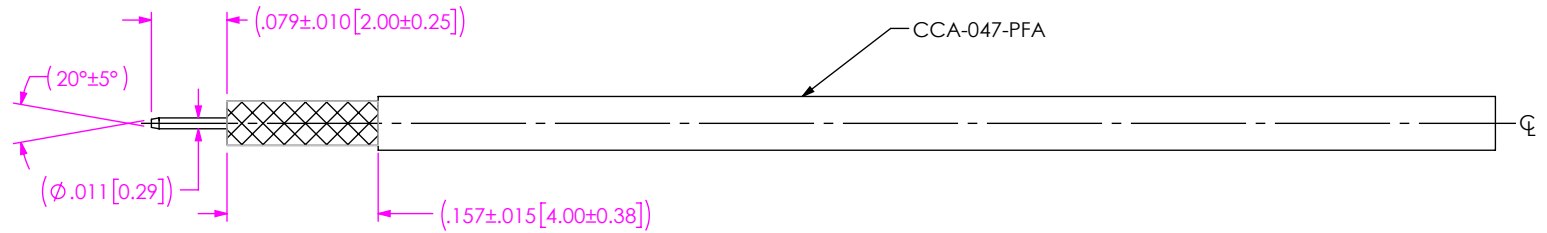
520 PARK EAST BLVD, NEW ALBANY, IN 47150  
PHONE: 812-944-6733 FAX: 812-948-5047  
e-Mail info@SAMTEC.com code 55322

DO NOT SCALE DRAWING SHEET SCALE: 8:1

DESCRIPTION:  
SMPM JACK ASSEMBLY FOR URSA

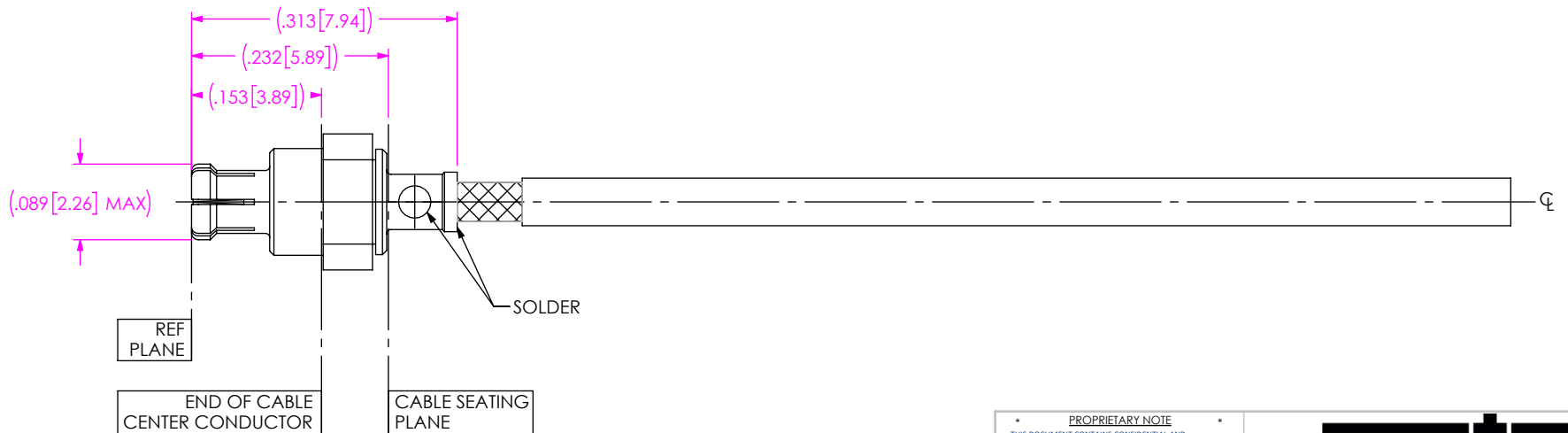
DWG. NO.  
PRFM0-J-C-XX-047A-SD-3

BY: SAM H 1/22/2026 SHEET 1 OF 2



- 1A. TRIM CABLE TO EXPOSE OUTER BRAID AND CENTER CONDUCTOR AS SHOWN.
- 1B. POINT CENTER CONDUCTOR AS SHOWN.

**IN-PROCESS VIEW 1**



- 2A. INSERT CABLE/STOP INTO CONNECTOR UNTIL SEATED (DO NOT FORCE) AND SOLDER AS SHOWN.

**IN-PROCESS VIEW 2**

**PROPRIETARY NOTE**  
 THIS DOCUMENT CONTAINS CONFIDENTIAL AND PROPRIETARY INFORMATION AND ALL DESIGN, MANUFACTURING, REPRODUCTION, USE, PATENT RIGHTS AND SALES RIGHTS ARE EXPRESSLY RESERVED BY SAMTEC, INC. THIS DOCUMENT SHALL NOT BE DISCLOSED, IN WHOLE OR PART, TO ANY UNAUTHORIZED PERSON OR ENTITY NOR REPRODUCED, TRANSFERRED OR INCORPORATED IN ANY OTHER PROJECT IN ANY MANNER WITHOUT THE EXPRESS WRITTEN CONSENT OF SAMTEC, INC.



520 PARK EAST BLVD, NEW ALBANY, IN 47150  
 PHONE: 812-944-6733 FAX: 812-948-5047  
 e-Mail info@SAMTEC.com code 55322

DO NOT SCALE DRAWING

SHEET SCALE: 5:1

DESCRIPTION: SMPM JACK ASSEMBLY FOR URSA

DWG. NO. PRFM0-J-C-XX-047A-SD-3

BY: SAM H 1/22/2026 SHEET 2 OF 2