

DO NOT SCALE FROM THIS PRINT

DESIGNED & DIMENSIONED IN INCHES[MILLIMETERS]

PRFS1-P-C-EP-141A-SS

**SERIES**  
-S1: SSMA

**GENDER**  
-P: PLUG

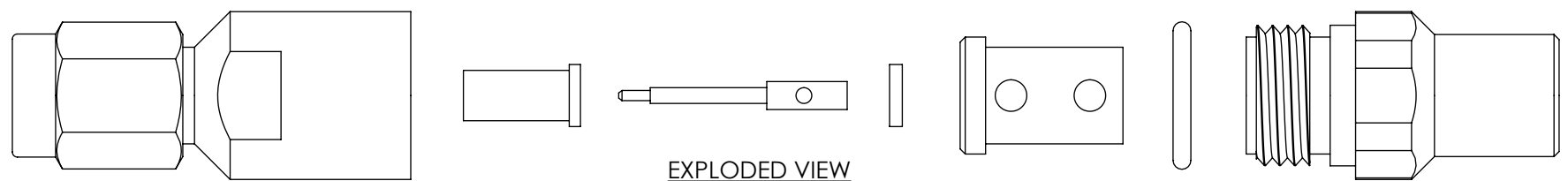
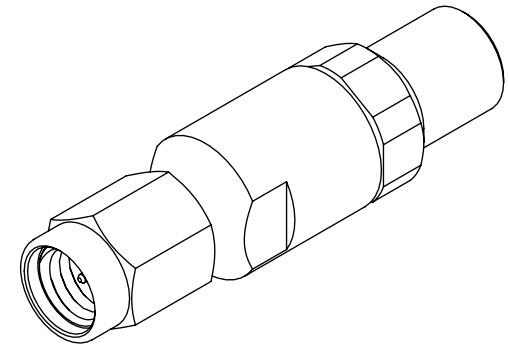
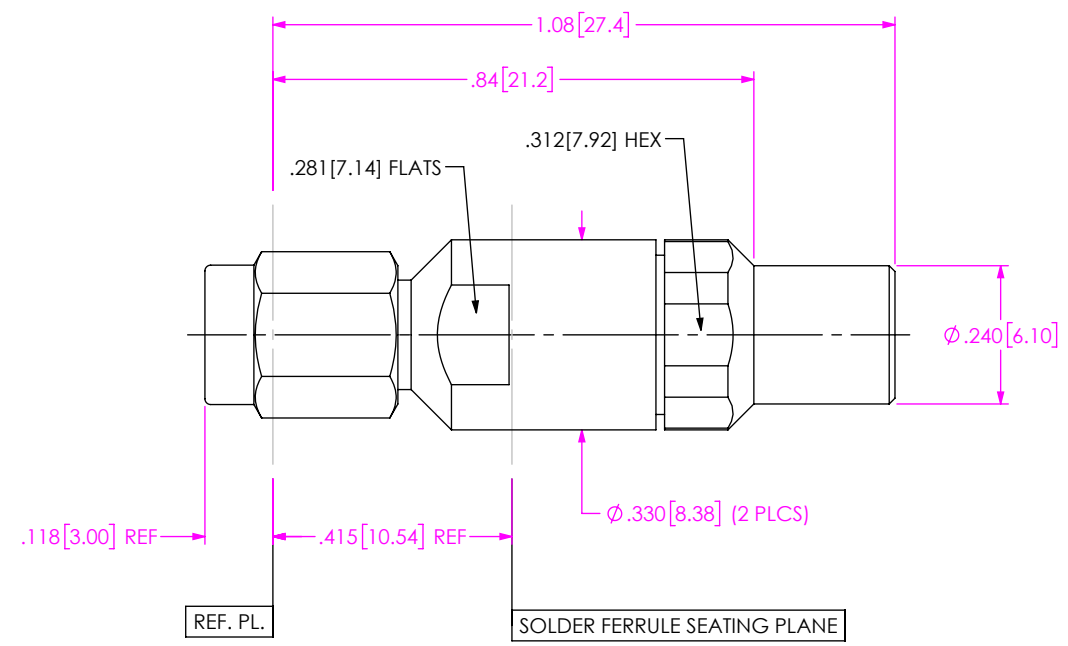
**TYPE**  
-C: CABLE

**TERMINATION**  
-S: SOLDER CLAMP

**ORIENTATION**  
-S: STRAIGHT

**CABLE TYPE**  
-141A: HARBOUR SS402

**FINISH**  
-EP: 50µ" EXTRA HEAVY GOLD CENTER CONTACT, PASSIVATED OUTER CONTACT




EXPLODED VIEW  
NOT TO SCALE  
(FOR CLARITY ONLY)

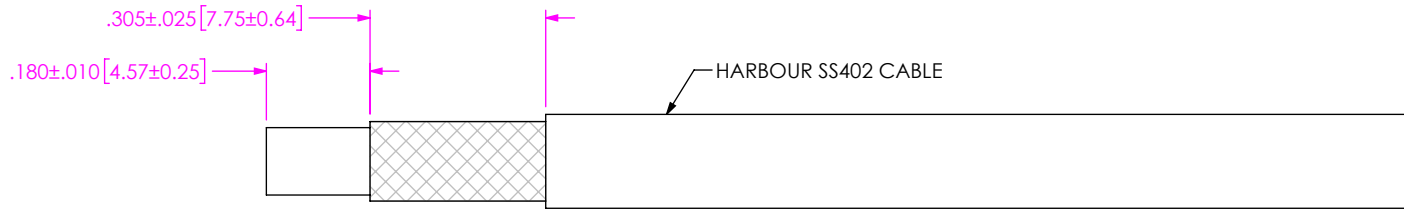
NOTES:

- MATERIAL:**  
BODY, CLAMP NUT, COUPLING NUT: STAINLESS STEEL  
CONTACT, LOCK RING: BERYLLIUM COPPER  
SOLDER FERRULE: BRASS ALLOY  
BEAD: PCTFE  
INSULATOR:  
O-RING, GASKET: SILICONE RUBBER
- FINISH:**  
BODY, CLAMP NUT, COUPLING NUT: PASSIVATED  
CONTACT, SOLDER FERRULE: 50µ" MIN. GOLD OVER 50µ" MIN. NICKEL PLATE
- PCI P/N: 3403

F:\DWG\MISC\MKTG\PRFS1-P-C-EP-141A-SS-MKT.SLDDRW

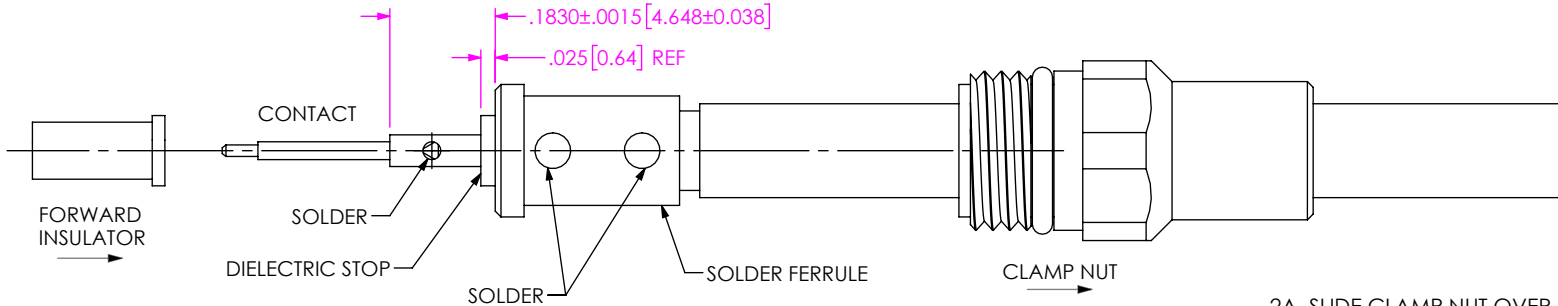
UNLESS OTHERWISE SPECIFIED, DIMENSIONS ARE IN INCHES. TOLERANCES ARE: DECIMALS      ANGLES .XX: ±.02[0.5]      1° .XXX: ±.005[0.13] .XXXX: ±.0005[0.013]	<b>PROPRIETARY NOTE</b> * THIS DOCUMENT CONTAINS CONFIDENTIAL AND PROPRIETARY INFORMATION AND ALL DESIGN, MANUFACTURING, REPRODUCTION, USE, PATENT RIGHTS AND SALES RIGHTS ARE EXPRESSLY RESERVED BY SAMTEC, INC. THIS DOCUMENT SHALL NOT BE DISCLOSED, IN WHOLE OR PART, TO ANY UNAUTHORIZED PERSON OR ENTITY NOR REPRODUCED, TRANSFERRED OR INCORPORATED IN ANY OTHER PROJECT IN ANY MANNER WITHOUT THE EXPRESS WRITTEN CONSENT OF SAMTEC, INC.	 520 PARK EAST BLVD, NEW ALBANY, IN 47150 PHONE: 812-944-6733      FAX: 812-948-5047 e-Mail: info@SAMTEC.com      code 55322
		DESCRIPTION: SSMA PLUG SOLDER CLAMP FOR HARBOUR SS402 CABLE
		DWG. NO. PRFS1-P-C-EP-141A-SS
DO NOT SCALE DRAWING      SHEET SCALE: 3:1		BY: CANDY W 05/05/2019      SHEET 1 OF 2

# CABLE APPLICATION VIEWS



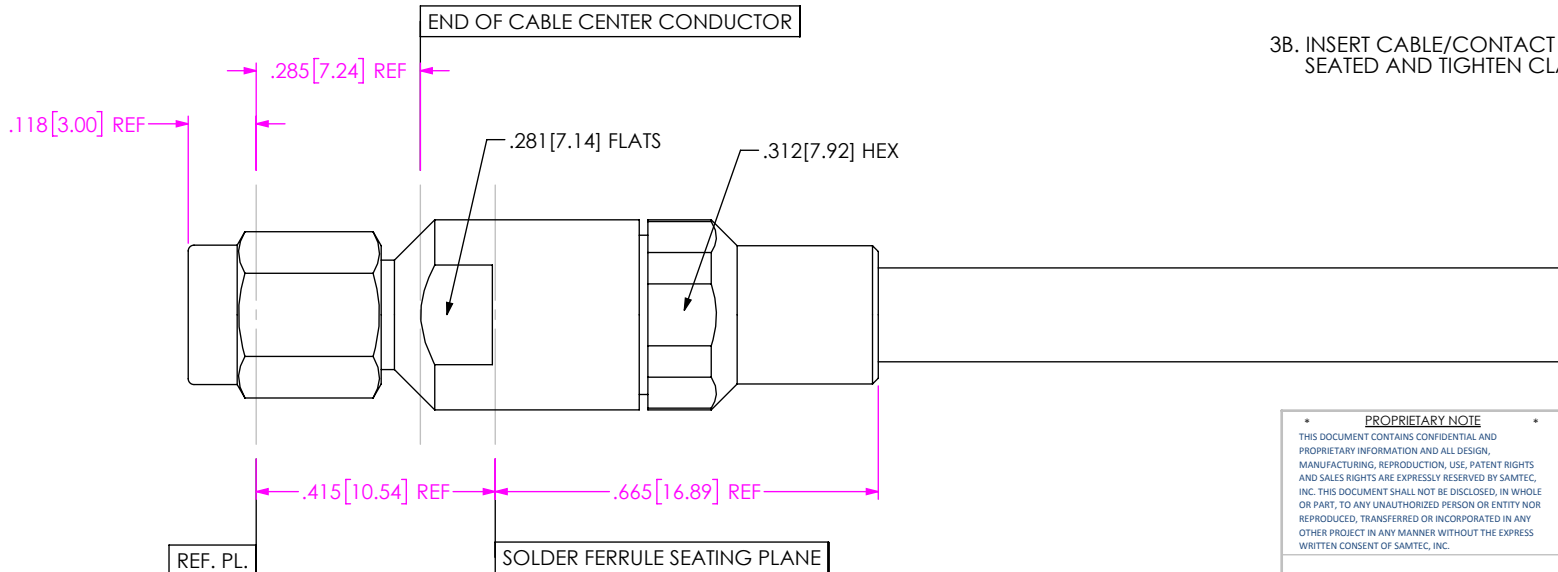
1A. TRIM CABLE AS SHOWN.

IN-PROCESS VIEW 1



- 2A. SLIDE CLAMP NUT OVER CABLE AS SHOWN.
- 2B. INSERT CABLE INTO SOLDER FERRULE AS SHOWN THEN SOLDER BRAIDS TO FERRULE WHERE INDICATED.
- 2C. TRIM EXPOSED CABLE DIELECTRIC FLUSH WITH SOLDER FERRULE FACE.
- 2D. SLIDE DIELECTRIC STOP OVER CABLE CENTER CONDUCTOR AGAINST STOP TO DIMENSION SHOWN.
- 2E. SLIDE FORWARD INSULATOR ONTO CONTACT.

IN-PROCESS VIEW 2



- 3B. INSERT CABLE/CONTACT SUB-ASSEMBLY INTO CONNECTOR UNTIL SEATED AND TIGHTEN CLAMP NUT TO 25-35 IN-LBS.

DISTANCE FROM END OF CABLE CENTER COND. TO REF. PL. IS .285 (REF.)

IN-PROCESS VIEW 3

**PROPRIETARY NOTE**  
 THIS DOCUMENT CONTAINS CONFIDENTIAL AND PROPRIETARY INFORMATION AND ALL DESIGN, MANUFACTURING, REPRODUCTION, USE, PATENT RIGHTS AND SALES RIGHTS ARE EXPRESSLY RESERVED BY SAMTEC, INC. THIS DOCUMENT SHALL NOT BE DISCLOSED, IN WHOLE OR PART, TO ANY UNAUTHORIZED PERSON OR ENTITY NOR REPRODUCED, TRANSFERRED OR INCORPORATED IN ANY OTHER PROJECT IN ANY MANNER WITHOUT THE EXPRESS WRITTEN CONSENT OF SAMTEC, INC.



520 PARK EAST BLVD, NEW ALBANY, IN 47150  
 PHONE: 812-944-6733 FAX: 812-948-5047  
 e-Mail info@SAMTEC.com code 55322

DO NOT SCALE DRAWING

SHEET SCALE: 3:1

DESCRIPTION: SSMA PLUG SOLDER CLAMP FOR HARBOUR SS402 CABLE

DWG. NO. PRFS1-P-C-EP-141A-SS

BY: CANDY W 05/05/2019 SHEET 2 OF 2