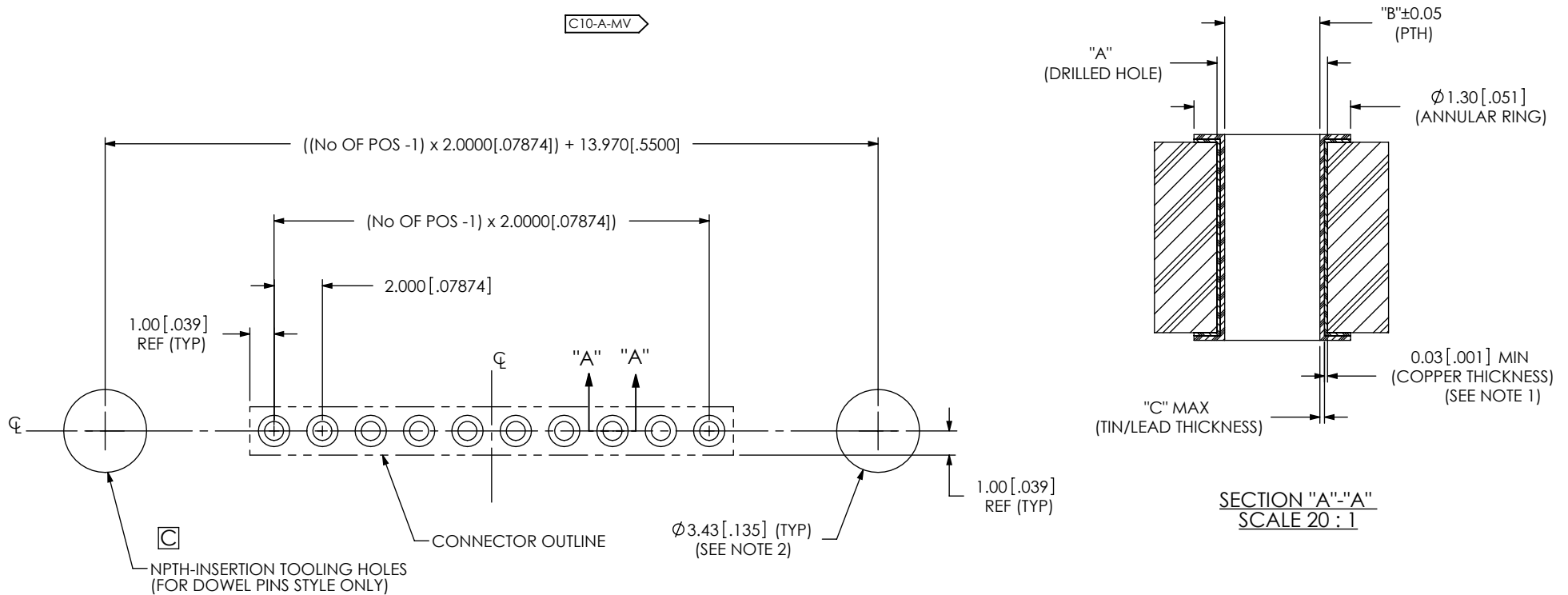


DESIGNED & DIMENSIONED
IN MILLIMETERS [INCHES]

C10-A-MV



SECTION "A"- "A"
SCALE 20 : 1

	"A"		"B"		"C"	
HASL	0.89	[0.035]	0.76	[0.030]	0.127	[0.005]
GOLD	0.89	[0.035]	0.81	[0.032]	N/A	
SILVER	0.89	[0.035]	0.81	[0.032]	N/A	
TIN	0.89	[0.035]	0.81	[0.032]	N/A	

NOTE:

1. MAX HARDNESS OF COPPER LAYER: 150 KNOOP.
2. ALL DIMENSIONS ARE SYMMETRICAL ABOUT CENTERLINE WITHIN .05 UNLESS OTHERWISE STATED.
3. CONTACT SAMTEC FOR INSERTION TOOLING: P/N CAT-PT-PTX-1XX-X-1.

PROPRIETARY NOTE

THIS DOCUMENT CONTAINS INFORMATION CONFIDENTIAL AND PROPRIETARY TO SAMTEC, INC. AND SHALL NOT BE REPRODUCED OR TRANSFERRED TO OTHER DOCUMENTS OR DISCLOSED TO OTHERS OR USED FOR ANY PURPOSE OTHER THAN THAT WHICH IT WAS OBTAINED WITHOUT THE EXPRESSED WRITTEN CONSENT OF SAMTEC, INC.



520 PARK EAST BLVD., NEW ALBANY, IN 47150
PHONE: 812-944-6733 FAX: 812-948-5047
e-Mail info@SAMTEC.com code 55322