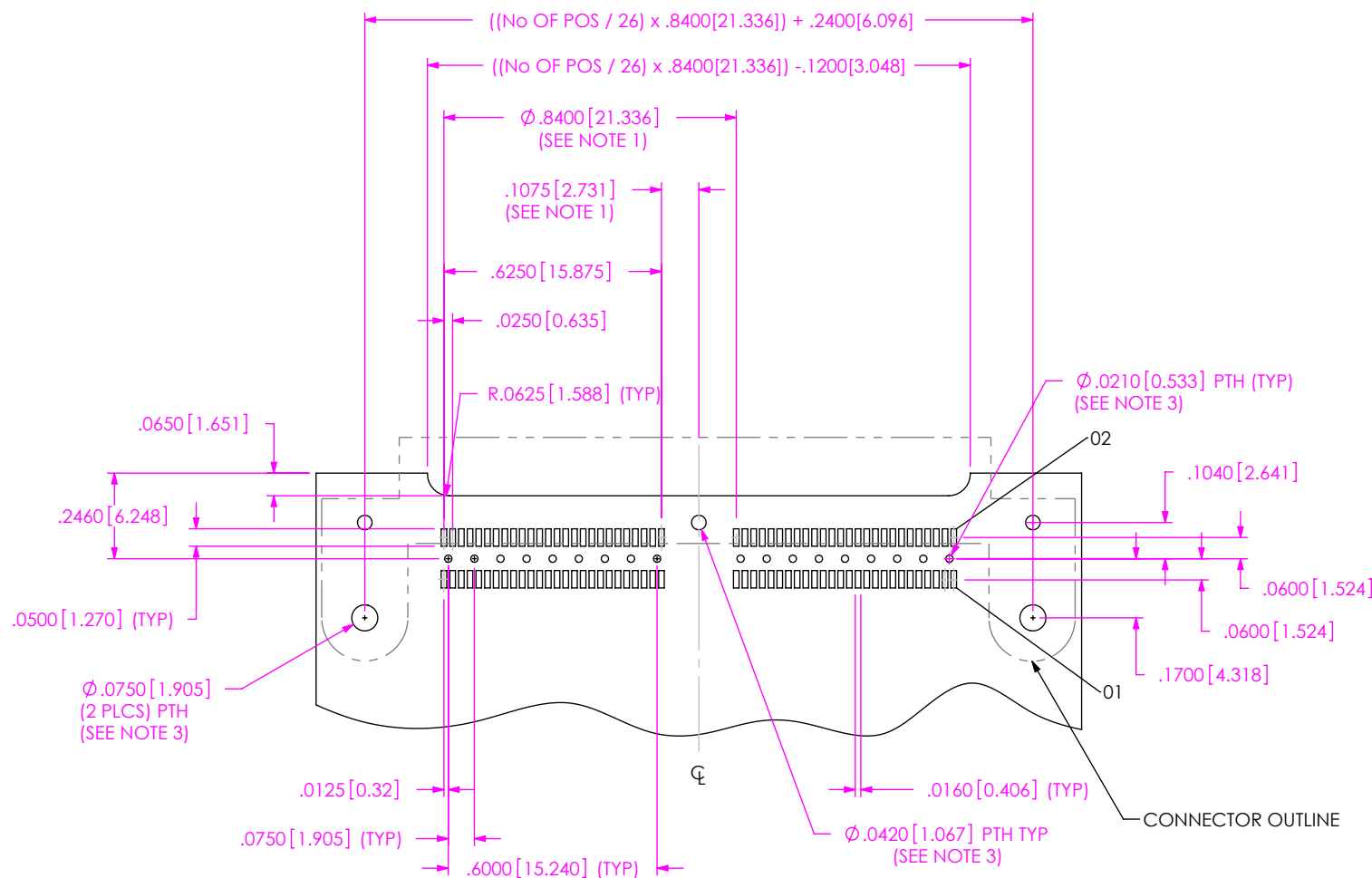


FIG 1  
(QFS-052-01-XX-D-RA SHOWN)



ALL DIMENSIONS ARE SYMMETRIC ABOUT THE CENTERLINE.

NOTES:

1. NOT REQUIRED FOR ONE BANK PART CONNECTOR.
2. DESIGNED IN ENGLISH.
3. TO BE SOLDERED USING PASTE IN HOLE TECHNOLOGY.
4. NOT RECOMMENDED FOR INVERTED REFLOW SOLDERING.

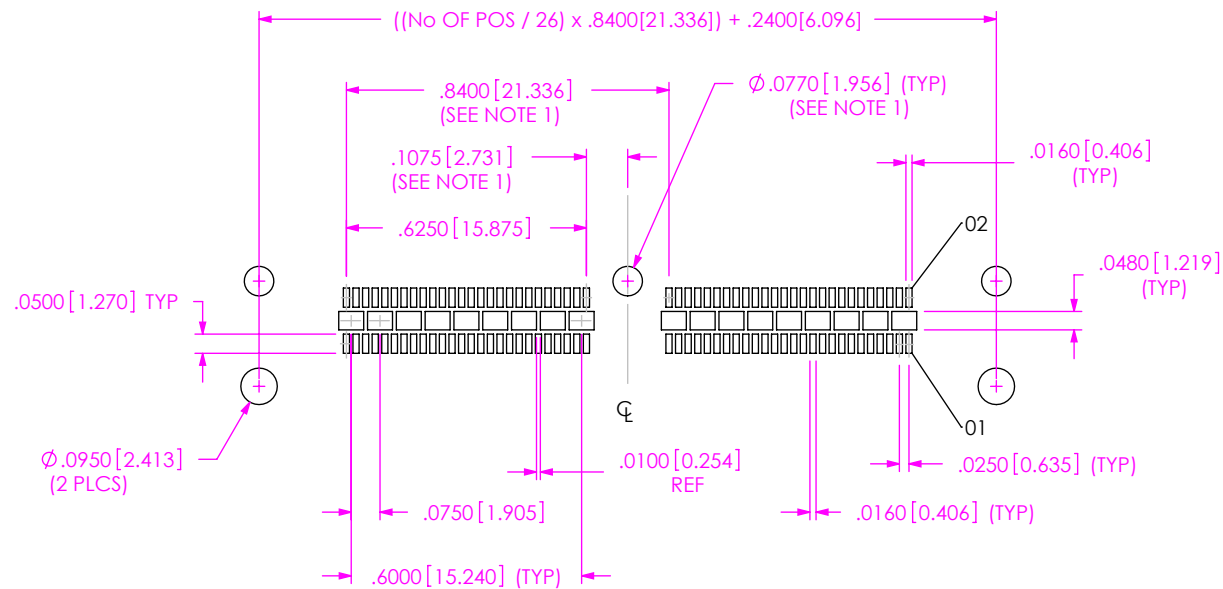
PROPRIETARY NOTE

THIS DOCUMENT CONTAINS INFORMATION  
CONFIDENTIAL AND PROPRIETARY TO  
SAMTEC, INC. AND SHALL NOT BE REPRODUCED  
OR TRANSFERRED TO OTHER DOCUMENTS OR  
DISCLOSED TO OTHERS OR USED FOR ANY  
PURPOSE OTHER THAN THAT WHICH IT WAS  
OBTAINED WITHOUT THE EXPRESSED WRITTEN  
CONSENT OF SAMTEC, INC.

**samtec**

520 PARK EAST BLVD, NEW ALBANY, IN 47150  
PHONE: 812-944-6733 FAX: 812-948-5047  
e-Mail: info@SAMTEC.com code: 55322

FIG 2  
(QFS-052-01-XX-D-RA SHOWN)



ALL DIMENSIONS ARE SYMMETRIC ABOUT THE CENTERLINE.

THIS DOCUMENT CONTAINS INFORMATION  
CONFIDENTIAL AND PROPRIETARY TO  
SAMTEC, INC. AND SHALL NOT BE REPRODUCED  
OR TRANSFERRED TO OTHER DOCUMENTS OR  
DISCLOSED TO OTHERS OR USED FOR ANY  
PURPOSE OTHER THAN THAT WHICH IT WAS  
OBTAINED WITHOUT THE EXPRESSED WRITTEN  
CONSENT OF SAMTEC, INC.

**samtec**  
520 PARK EAST BLVD, NEW ALBANY, IN 47150  
PHONE: 812-944-6733 FAX: 812-948-5017  
e-Mail: [info@SAMTEC.com](mailto:info@SAMTEC.com) code: 55322

FIG 3  
(QFS-052-01-XX-D-RA-PC4 SHOWN)  
(SAME AS FIG 1, DIFFERENT AS SHOWN)

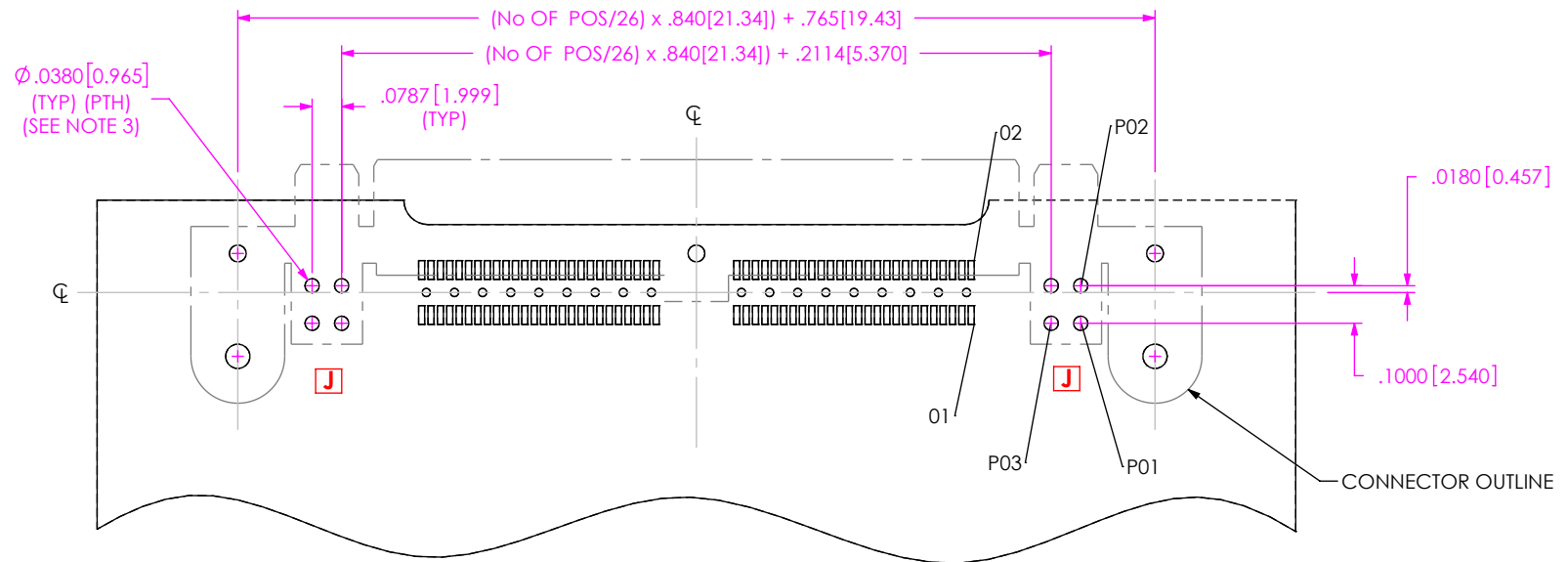
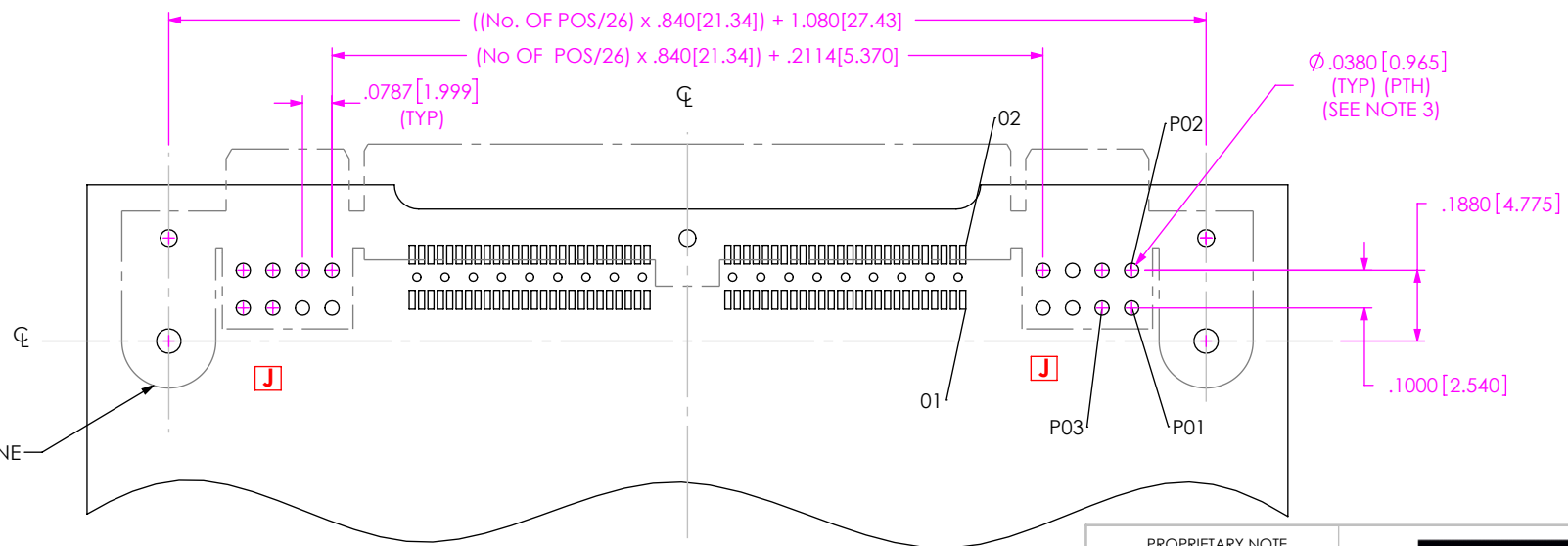


FIG 4  
(QFS-052-01-XX-D-RA-PC8 SHOWN)  
(SAME AS FIG 1, DIFFERENT AS SHOWN)



PROPRIETARY NOTE

THIS DOCUMENT CONTAINS INFORMATION  
CONFIDENTIAL AND PROPRIETARY TO  
SAMTEC, INC. AND SHALL NOT BE REPRODUCED  
OR TRANSFERRED TO OTHER DOCUMENTS OR  
DISCLOSED TO OTHERS OR USED FOR ANY  
PURPOSE OTHER THAN THAT WHICH IT WAS  
OBTAINED WITHOUT THE EXPRESSED WRITTEN  
CONSENT OF SAMTEC, INC.

**samtec**

520 PARK EAST BLVD, NEW ALBANY, IN 47150  
PHONE: 812-944-6733 FAX: 812-948-5047  
e-Mail: info@SAMTEC.com code: 55322

FIG 5  
(QFS-052-01-XX-D-RA-PC4 SHOWN)  
(SAME AS FIG 2, DIFFERENT AS SHOWN)

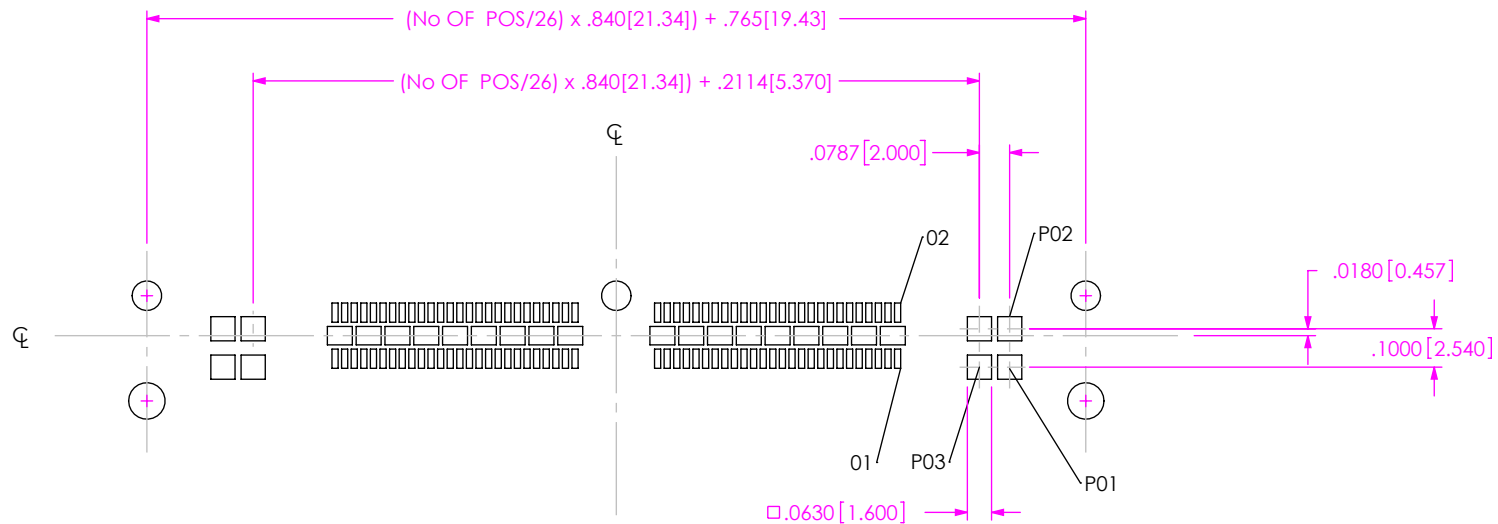
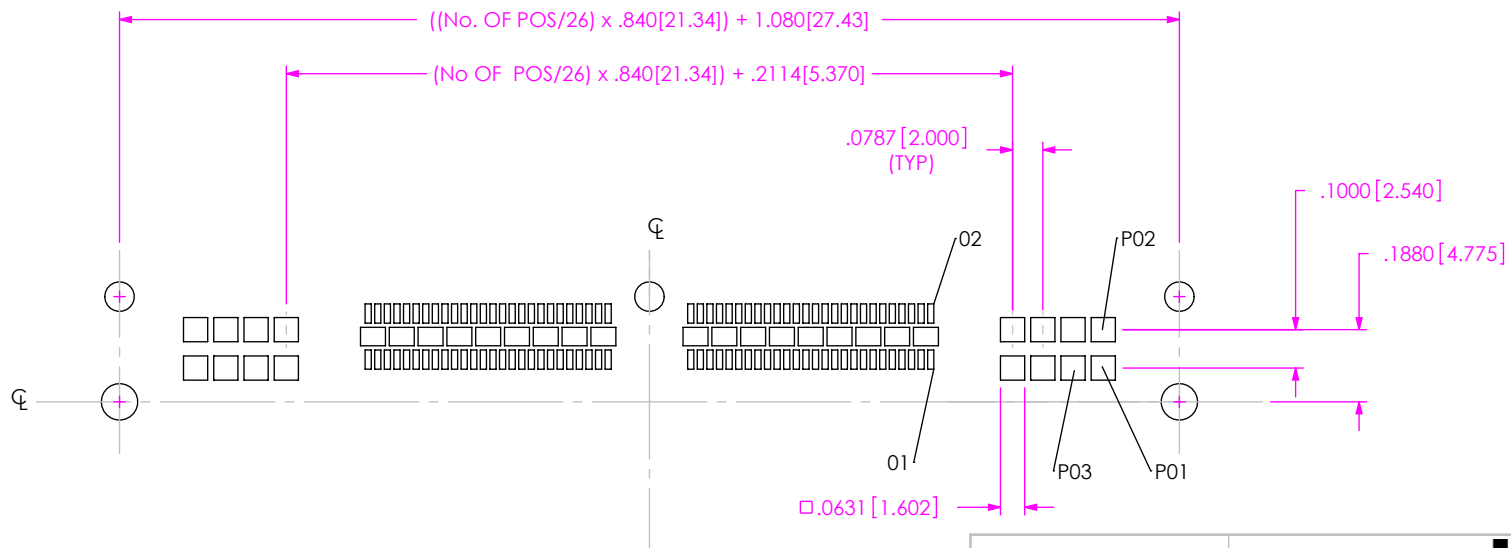


FIG 6  
(QFS-052-01-XX-D-RA-PC8 SHOWN)  
(SAME AS FIG 2, DIFFERENT AS SHOWN)



PROPRIETARY NOTE

THIS DOCUMENT CONTAINS INFORMATION  
CONFIDENTIAL AND PROPRIETARY TO  
SAMTEC, INC. AND SHALL NOT BE REPRODUCED  
OR TRANSFERRED TO OTHER DOCUMENTS OR  
DISCLOSED TO OTHERS OR USED FOR ANY  
PURPOSE OTHER THAN THAT WHICH IT WAS  
OBTAINED WITHOUT THE EXPRESSED WRITTEN  
CONSENT OF SAMTEC, INC.

**samtec**

520 PARK EAST BLVD, NEW ALBANY, IN 47150  
PHONE: 812-944-6733 FAX: 812-948-5047  
e-Mail: info@SAMTEC.com code: 55322