

NO OF POSITIONS  
-026, -052, -078, -104  
(PER ROW)

LEAD STYLE  
-01: .062[1.57]  
-02: .093[2.36]

BLANK: TRAY (SEE NOTES 4 & 8)  
 -TR: TAPE & REEL (SEE NOTES 8 & 9)  
 -FR: FULL REEL QTY TAPE & REEL  
 (SEE NOTES 8 & 9)  
 (-TR & -FR PACKAGING AVAILABLE FOR:  
 -026 & -052 WITH NO OPTIONS,  
 -026 & -052 WITH -PC4,  
 -026 WITH -PC8)

-K: POLYAMIDE FILM  
(USE K-DOT-.310-.406-.005)

-PC4: 4 POWER PINS  
(SEE FIG 2, SHEET 5)  
(NOT AVAILABLE WITH -104 POS)  
-PC8: 8 POWER PINS  
(SEE FIG 3, SHEET 5)  
(NOT AVAILABLE WITH -104 POS)

— -RA: RIGHT ANGLE

— ROW SPECIFICATION

-D: DOUBLE (USE QFS-26-01-D-XX-RA)

## —PLATING SPECIFICATION

(SEE TABLE 6, SHEET 4)

-SL: 10µ" GOLD IN CONTACT AREA, MATTE TIN TAIL  
 -S: 30µ" GOLD IN CONTACT AREA, MATTE TIN TAIL  
 -L: 10µ" GOLD IN CONTACT AREA, 3µ" GOLD ON TAIL  
 -H: 30µ" GOLD IN CONTACT AREA, 3µ" GOLD ON TAIL

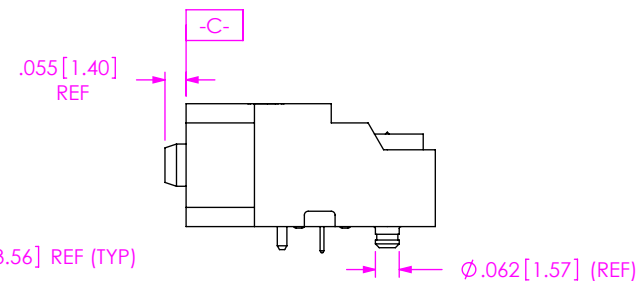
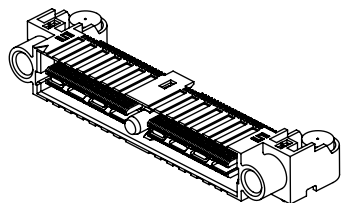
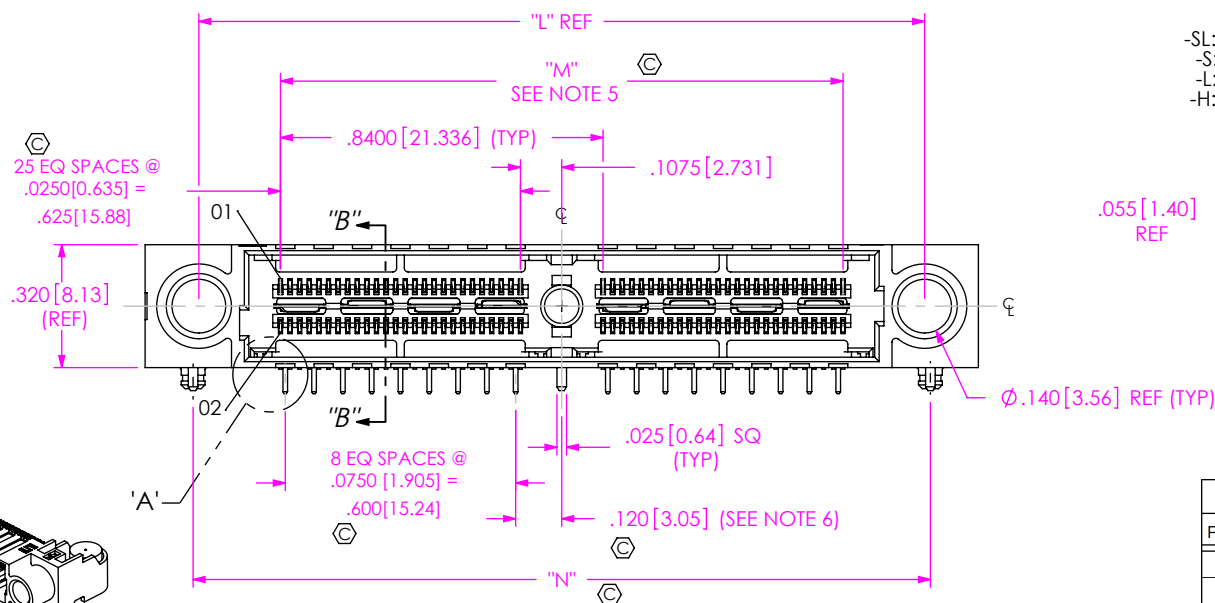
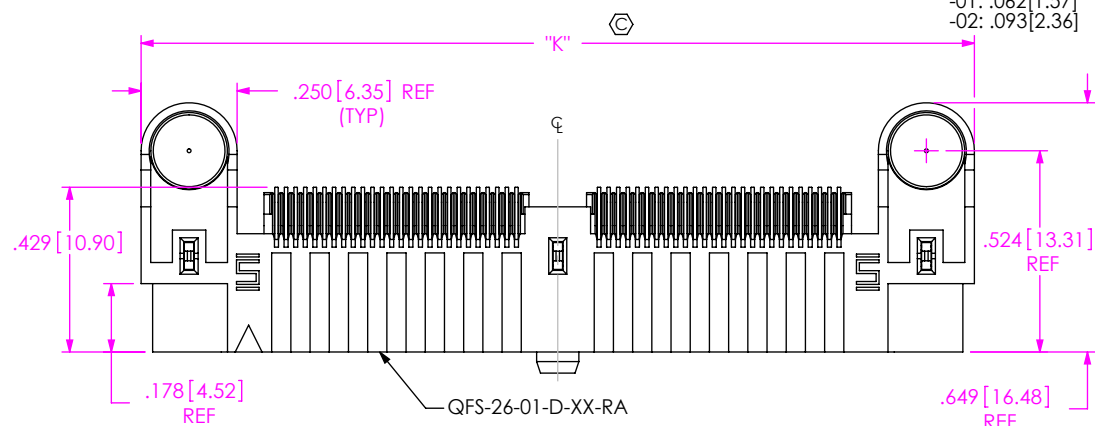



FIG 1  
(QFS-052-01-XX-D-RA SHOWN)

POSITION	"K"	"L"	"M"	"N"
-026	1.330 [33.78]	1.050 [26.67]	.625 [15.88]	1.080 [27.43]
-052	2.170 [55.12]	1.890 [48.01]	1.465 [37.21]	1.920 [48.77]
-078	3.010 [76.45]	2.730 [69.34]	2.305 [58.55]	2.760 [70.10]
-104	3.850 [97.79]	3.570 [90.68]	3.145 [79.88]	3.600 [91.44]

NOTES:

1.  REPRESENTS A CRITICAL DIMENSION.
2. MAXIMUM BURR ALLOWANCE: .0010[0.02].
3. MINIMUM PUSHOUT FORCE: SIGNAL: .5 LB [2.22 N],  
SHIELD/GROUND, POWER PIN AND COUNTERWEIGHT: 1 LB [4.45 N].
4. TRAYS ARE STANDARD PACKAGING.
5. PLUS .007" ALLOWED ON 4 BANK.
6. DOES NOT APPLY TO 1 BANK.
7. USE -Z- DATUM ZONE FOR ONLY MEASUREMENTS.
8. ORDERS WILL BE PACKAGED ACCORDING TO THE SAMTEC PACKAGING EFFICIENCY  
STANDARDS (SPES) FOUND ON [WWW.SAMTEC.COM](http://WWW.SAMTEC.COM).
9. ATTACH LABEL-4X2 TO EACH REEL.

UNLESS OTHERWISE SPECIFIED,  
DIMENSIONS ARE IN INCHES.

TOLERANCES ARE:

DECIMALS	ANGLES
----------	--------

XX: +.01 [.3]

.XXX:  $\pm .005$  [.13]

.XXX:  $\pm .0020$  [.051]

PROPRIETARY NOTE

THIS DOCUMENT CONTAINS CONFIDENTIAL AND PROPRIETARY INFORMATION AND ALL DESIGN, MANUFACTURING, REPRODUCTION, USE, PATENT RIGHTS AND SALES RIGHTS ARE EXPRESSLY RESERVED BY SAMTEC, INC. THIS DOCUMENT SHALL NOT BE DISCLOSED, IN WHOLE OR PART, TO ANY UNAUTHORIZED PERSON OR ENTITY NOR REPRODUCED, TRANSFERRED OR INCORPORATED IN ANY OTHER PROJECT IN ANY MANNER WITHOUT THE EXPRESS WRITTEN CONSENT OF SAMTEC, INC.

**MATERIAL:** DO NOT SCALE DRAWING SHEET SCALE: 2:  
INSULATOR: LCP, COLOR BLACK  
CONTACT, POWER PIN & GROUND PLANE: PHOS BRONZE  
COUNTERWEIGHT: BRASS

SHEET SCALE: 2:1

DESCRIPTION:

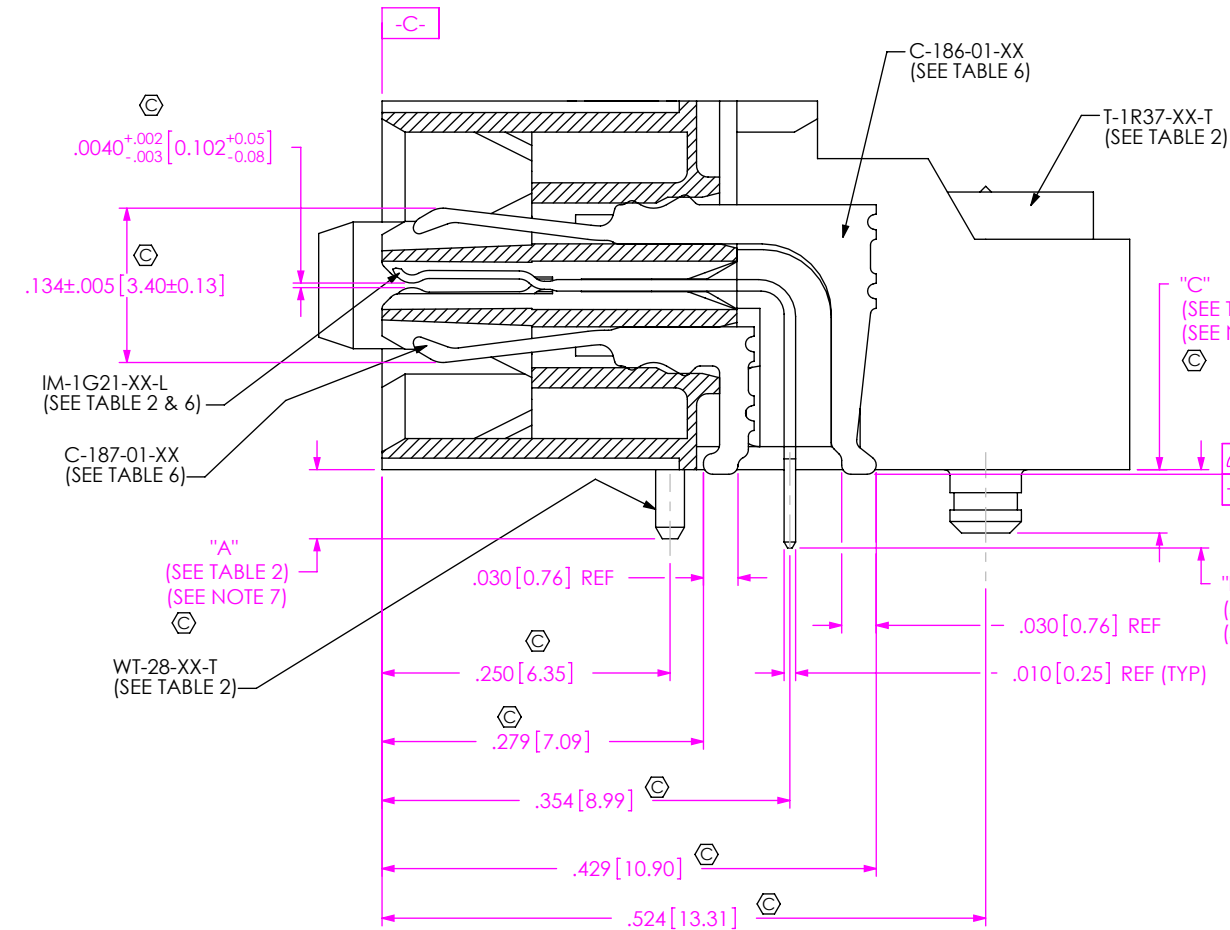
.635mm DUAL ROW RIGHT ANGLE SOCKET ASSEMBLY

DWG. NO.

QFS-XXX-XX-XX-D-RA-XXX-X-XX

BY: CLAY W	8/25/2006	SHEET 1 OF 6
------------	-----------	--------------

F:\DWG\SW\Exisprod\Assembly\Pt635mm\QFS-XXX-XX-XX-D-RA-XXX-X-XX-ASM.SLDDRW



SECTION "B"-"B"  
SCALE 6:1

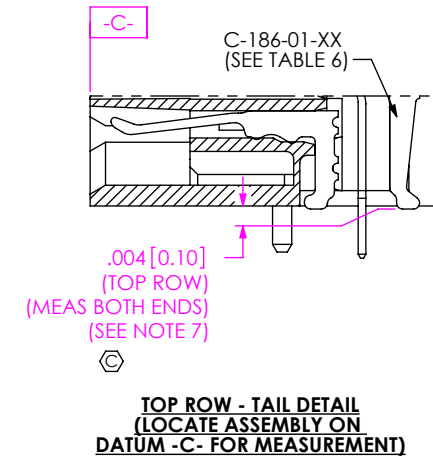
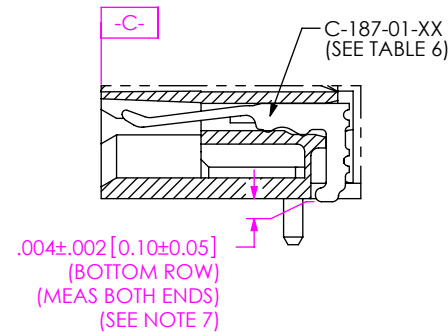
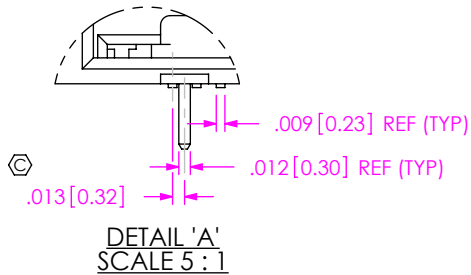


TABLE 1

No OF POSITIONS	COPLANARITY	STRAIGHTNESS ROW 1	STRAIGHTNESS ROW 2
-026 THRU -052	.004[.10]	.004[.10]	.004[.10]
-078 THRU -104	.006[.15]	.006[.15]	.006[.15]

TABLE 2

LEAD STYLE	"A"	"B"	"C"	WT-28-XX-T	IM-1G21-XX-L	T-1R37-XX-T
-01	.060[1.52]	.068[1.73]	.055[1.40]	WT-28-01-T	IM-1G21-01-L	T-1R37-01-T
-02	.091[2.31]	.099[2.51]	.086[2.18]	WT-28-02-T	IM-1G21-02-L	T-1R37-02-T

• PROPRIETARY NOTE •  
THIS DOCUMENT CONTAINS CONFIDENTIAL AND PROPRIETARY INFORMATION AND ALL DESIGN, MANUFACTURING, REPRODUCTION, USE, PATENT RIGHTS AND SALES RIGHTS ARE EXPRESSLY RESERVED BY SAMTEC, INC. THIS DOCUMENT SHALL NOT BE DISCLOSED, IN WHOLE OR PART, TO ANY UNAUTHORIZED PERSON OR ENTITY NOR REPRODUCED, TRANSFERRED OR INCORPORATED IN ANY OTHER PROJECT IN ANY MANNER WITHOUT THE EXPRESS WRITTEN CONSENT OF SAMTEC, INC.

DO NOT SCALE DRAWING

SHEET SCALE: 6:1

**samtec**

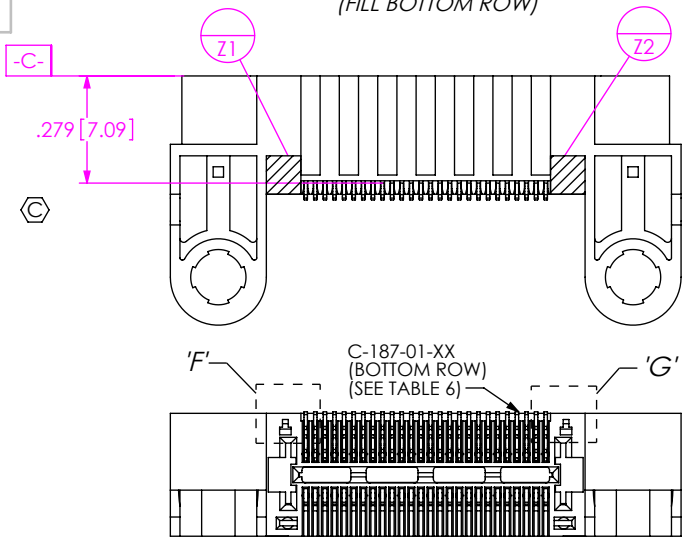
520 PARK EAST BLVD, NEW ALBANY, IN 47150  
PHONE: 812-944-6733 FAX: 812-948-5047  
e-Mail: info@SAMTEC.com code 55322

DESCRIPTION:  
.635mm DUAL ROW RIGHT ANGLE SOCKET ASSEMBLY

DWG. NO.  
QFS-XXX-XX-XX-D-RA-XXX-X-XX

BY: CLAY W 8/25/2006 SHEET 2 OF 6

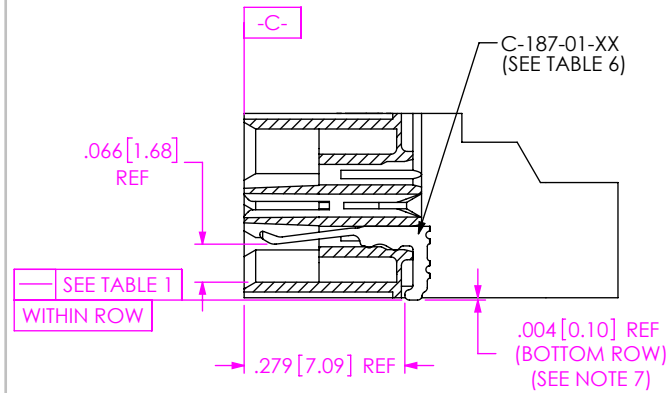
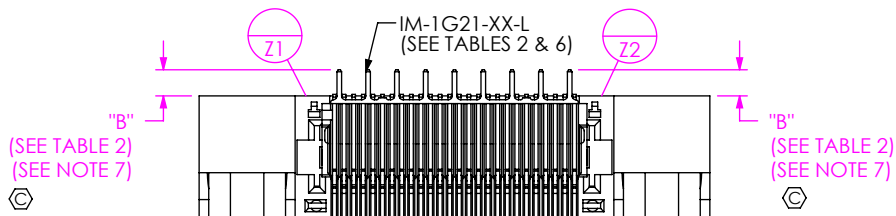
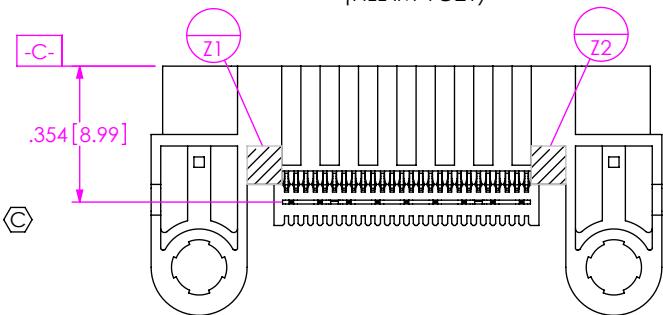
INSPECTION VIEW 1  
(FILL BOTTOM ROW)



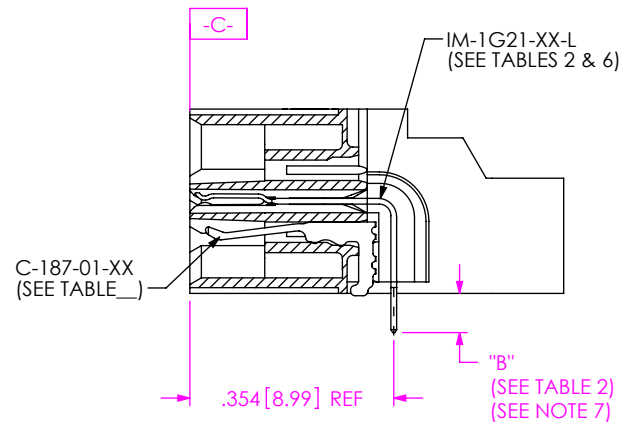
DETAIL 'F'  
SCALE 8:1

DETAIL 'G'  
SCALE 8:1

INSPECTION VIEW 2  
(FILL IM-1G21)



IN-PROCESS 1  
(FILL BOTTOM ROW)  
(SEE INSPECTION VIEW 1 FOR ORIENTATION AND CPC'S)



IN-PROCESS 2  
(FILL IM-1G21)  
(SEE INSPECTION VIEW 2 FOR ORIENTATION AND CPC'S)

PROPRIETARY NOTE  
THIS DOCUMENT CONTAINS CONFIDENTIAL AND PROPRIETARY INFORMATION AND ALL DESIGN, MANUFACTURING, REPRODUCTION, USE, PATENT RIGHTS AND SALES RIGHTS ARE EXPRESSLY RESERVED BY SAMTEC, INC. THIS DOCUMENT SHALL NOT BE DISCLOSED, IN WHOLE OR PART, TO ANY UNAUTHORIZED PERSON OR ENTITY NOR REPRODUCED, TRANSFERRED OR INCORPORATED IN ANY OTHER PROJECT IN ANY MANNER WITHOUT THE EXPRESS WRITTEN CONSENT OF SAMTEC, INC.

DO NOT SCALE DRAWING

SHEET SCALE: 2:1

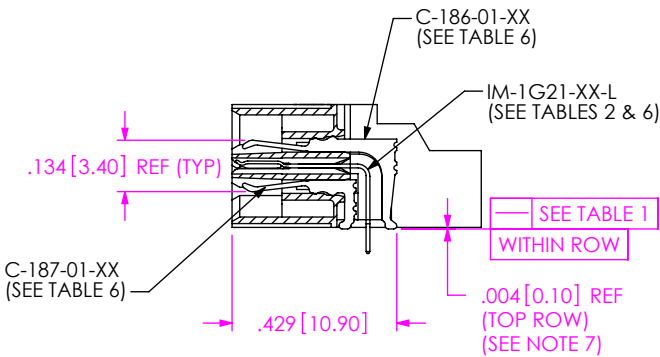
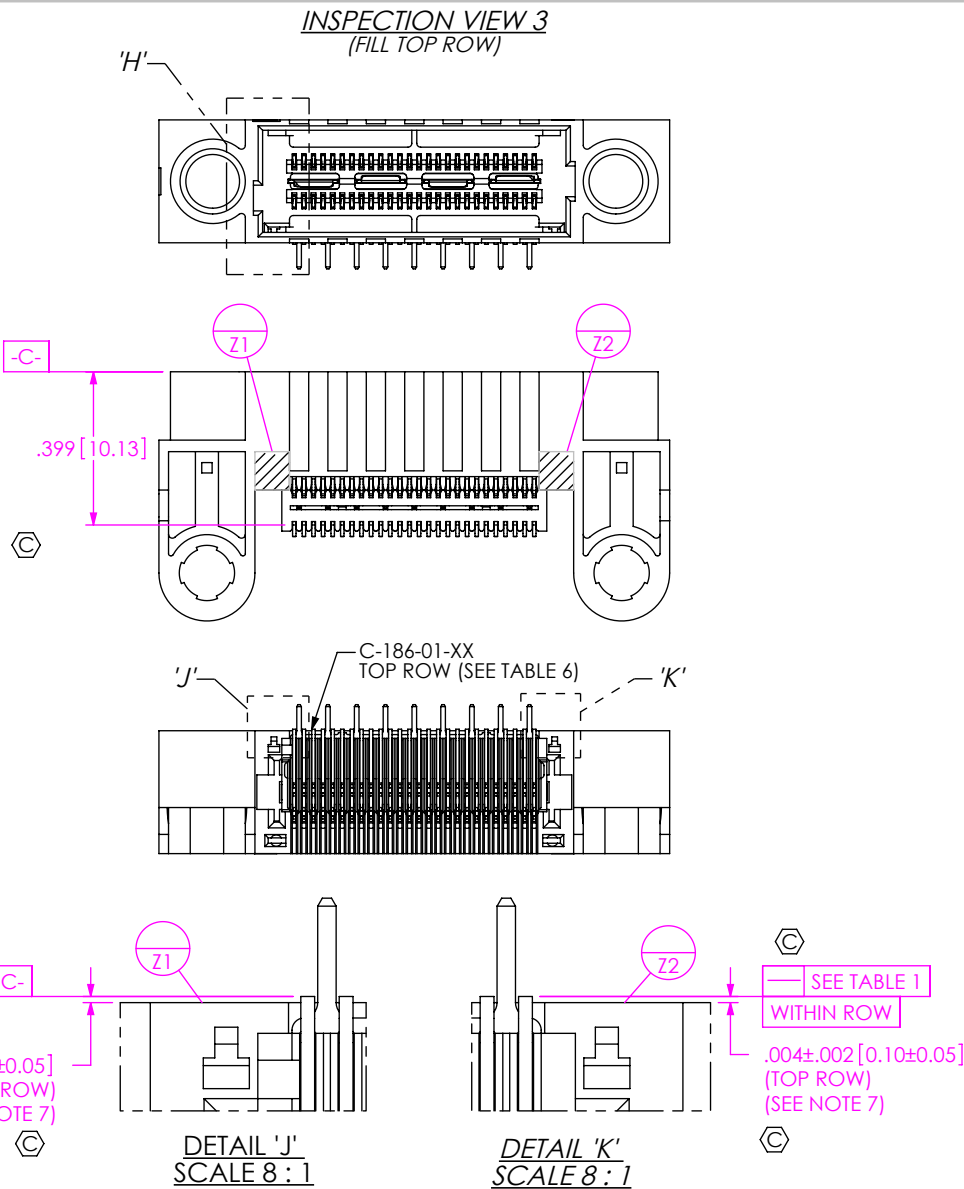
**samtec**

520 PARK EAST BLVD, NEW ALBANY, IN 47150  
PHONE: 812-944-6733 FAX: 812-948-5047  
e-Mail info@SAMTEC.com code 55322

DESCRIPTION:  
.635mm DUAL ROW RIGHT ANGLE SOCKET ASSEMBLY

DWG. NO.  
QFS-XXX-XX-XX-D-RA-XXX-X-XX

BY: CLAY W 8/25/2006 SHEET 3 OF 6



**IN-PROCESS 3**  
(FILL TOP ROW)  
(SEE INSPECTION VIEW 3 FOR ORIENTATION AND CPC'S)

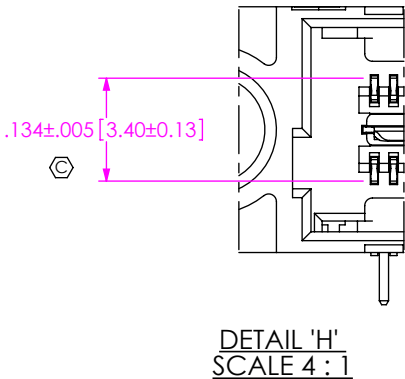


TABLE 6: PLATING SPECIFICATIONS				
	CONTACT	CONTACT	GROUND PLANE	PCX CONTACTS
-SL	C-186-01-SL: 10µ" GOLD CONTACT, MATTE TIN TAIL	C-187-01-SL: 10µ" GOLD CONTACT, MATTE TIN TAIL	IM-1G21-XX-L: 10µ" GOLD CONTACT, MATTE TIN TAIL	C-79-XX-L: 10µ" GOLD CONTACT, MATTE TIN TAIL
-S	C-186-01-S: 30µ" GOLD CONTACT, MATTE TIN TAIL	C-187-01-S: 30µ" GOLD CONTACT, MATTE TIN TAIL	IM-1G21-XX-L: 10µ" GOLD CONTACT, MATTE TIN TAIL	C-79-XX-S: 30µ" GOLD CONTACT, MATTE TIN TAIL
-L	C-186-01-L: 10µ" GOLD CONTACT, 3µ" GOLD TAIL	C-187-01-L: 10µ" GOLD CONTACT, 3µ" GOLD TAIL	IM-1G21-XX-L: 10µ" GOLD CONTACT, MATTE TIN TAIL	C-79-XX-L: 10µ" GOLD CONTACT, MATTE TIN TAIL
-H	C-186-01-H: 30µ" GOLD CONTACT, 3µ" GOLD TAIL	C-187-01-H: 30µ" GOLD CONTACT, 3µ" GOLD TAIL	IM-1G21-XX-L: 10µ" GOLD CONTACT, MATTE TIN TAIL	C-79-XX-H: 50µ" GOLD CONTACT, 3µ" LIGHT GOLD TAIL

**PROPRIETARY NOTE**  
THIS DOCUMENT CONTAINS CONFIDENTIAL AND PROPRIETARY INFORMATION AND ALL DESIGN, MANUFACTURING, REPRODUCTION, USE, PATENT RIGHTS AND SALES RIGHTS ARE EXPRESSLY RESERVED BY SAMTEC, INC. THIS DOCUMENT SHALL NOT BE DISCLOSED, IN WHOLE OR PART, TO ANY UNAUTHORIZED PERSON OR ENTITY NOR REPRODUCED, TRANSFERRED OR INCORPORATED IN ANY OTHER PROJECT IN ANY MANNER WITHOUT THE EXPRESS WRITTEN CONSENT OF SAMTEC, INC.

DO NOT SCALE DRAWING

SHEET SCALE: 1:1

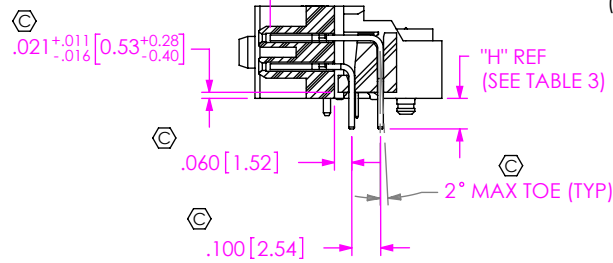
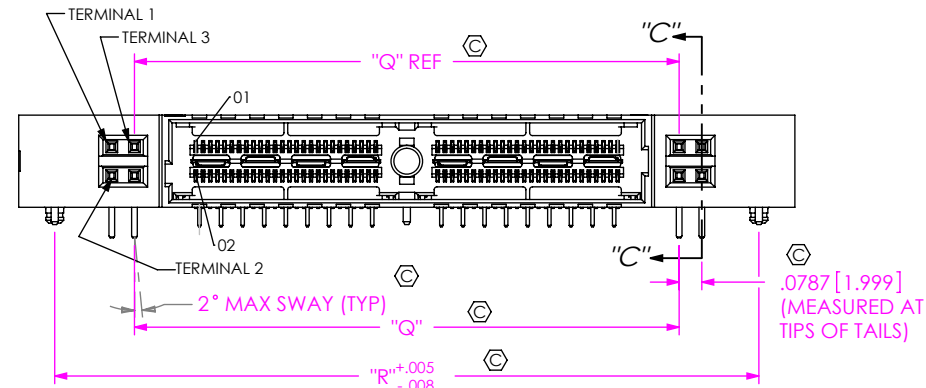
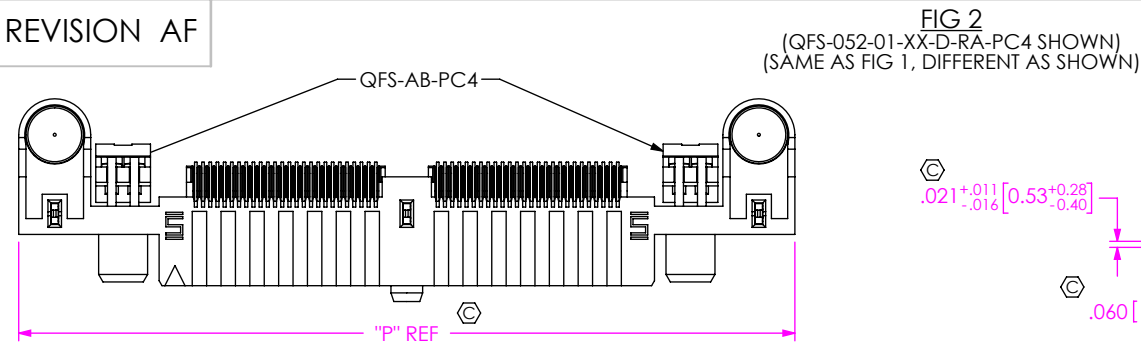


520 PARK EAST BLVD, NEW ALBANY, IN 47150  
PHONE: 812-944-6733 FAX: 812-948-5047  
e-Mail info@SAMTEC.com code 55322

DESCRIPTION:  
.635mm DUAL ROW RIGHT ANGLE SOCKET ASSEMBLY

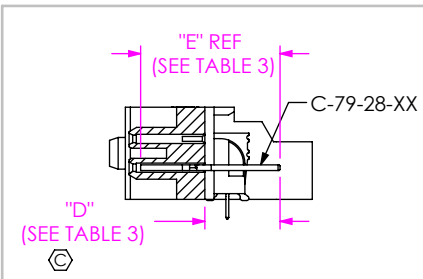
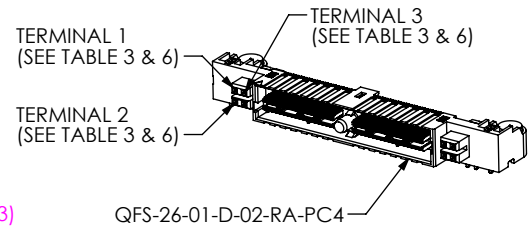
DWG. NO.  
**QFS-XXX-XX-XX-D-RA-XXX-X-XX**

BY: CLAY W 8/25/2006 SHEET 4 OF 6

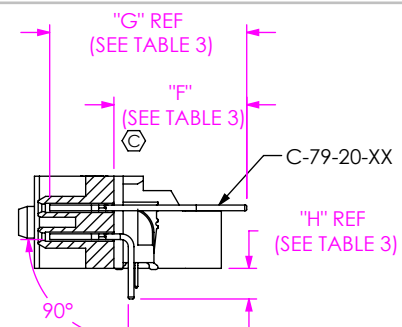


SECTION "C"- "C"  
SCALE 1.5:1

TABLE 3							
LEAD STYLE	TERMINAL 1	TERMINAL 2	"D"	"E"	"F"	"G"	"H"
-01	C-79-28-XX	C-79-29-XX	.261 [6.63]	.484 [12.29]	.461 [11.71]	.684 [17.37]	.106 [2.69]
-02	C-79-20-XX	C-79-20A-XX	.287 [7.29]	.510 [12.95]	.487 [12.37]	.710 [18.03]	.132 [3.35]



IN-PROCESS 4



IN-PROCESS 5

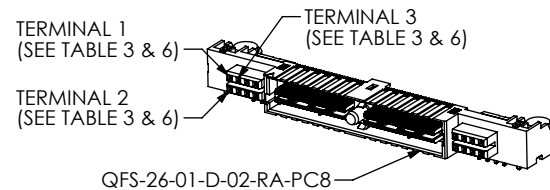
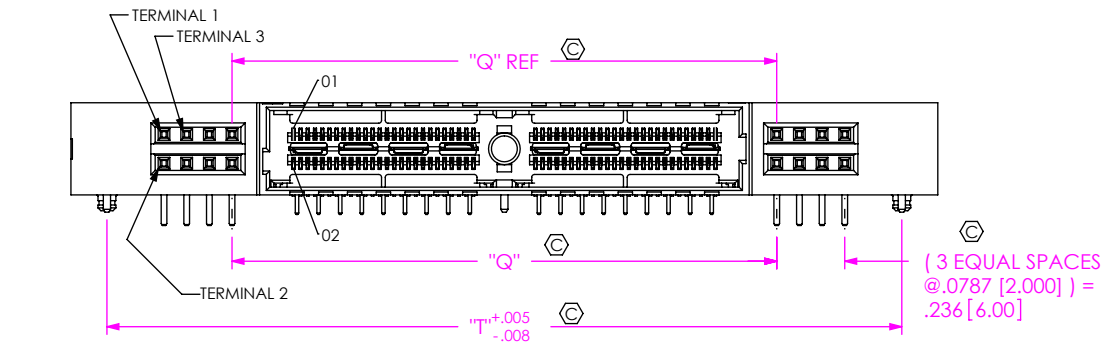
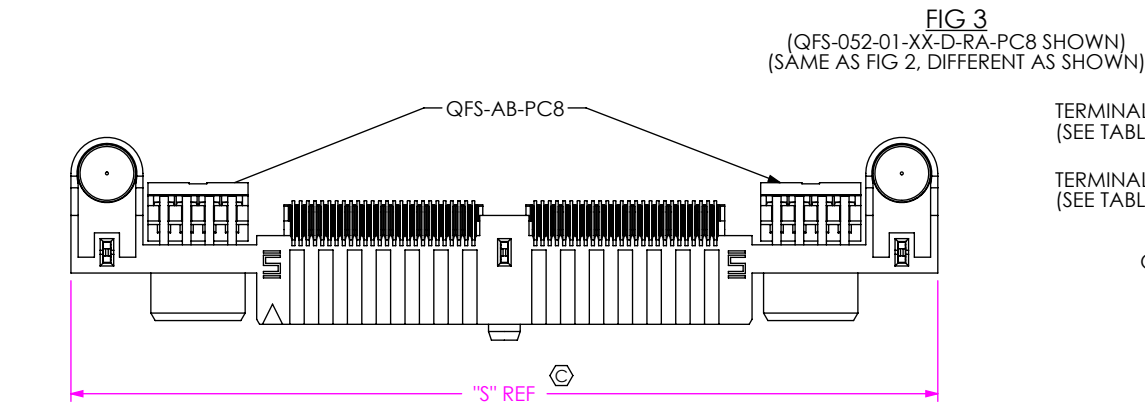


TABLE 7					
POSITION	"P"	"Q"	"R"	"S"	"T"
-026	1.855 [47.12]	1.051 [26.70]	1.605 [40.77]	2.170 [55.12]	1.920 [48.77]
-052	2.695 [68.45]	1.891 [48.03]	2.445 [62.10]	3.010 [76.45]	2.760 [70.10]
-078	3.535 [89.79]	2.731 [69.37]	3.285 [83.44]	3.850 [97.79]	3.600 [91.44]
-104	4.375 [111.13]	3.571 [90.70]	4.125 [104.78]	4.690 [119.13]	4.440 [112.78]

PROPRIETARY NOTE  
THIS DOCUMENT CONTAINS CONFIDENTIAL AND PROPRIETARY INFORMATION AND ALL DESIGN, MANUFACTURING, REPRODUCTION, USE, PATENT RIGHTS AND SALES RIGHTS ARE EXPRESSLY RESERVED BY SAMTEC, INC. THIS DOCUMENT SHALL NOT BE DISCLOSED, IN WHOLE OR PART, TO ANY UNAUTHORIZED PERSON OR ENTITY NOR REPRODUCED, TRANSFERRED OR INCORPORATED IN ANY OTHER PROJECT IN ANY MANNER WITHOUT THE EXPRESS WRITTEN CONSENT OF SAMTEC, INC.

DO NOT SCALE DRAWING

SHEET SCALE: 1.5:1



520 PARK EAST BLVD, NEW ALBANY, IN 47150  
PHONE: 812-944-6733 FAX: 812-948-5047  
e-Mail info@SAMTEC.com code 55322

DESCRIPTION:  
.635mm DUAL ROW RIGHT ANGLE SOCKET ASSEMBLY

DWG. NO.

QFS-XXX-XX-XX-D-RA-XXX-X-XX

BY: CLAY W 8/25/2006 SHEET 5 OF 6

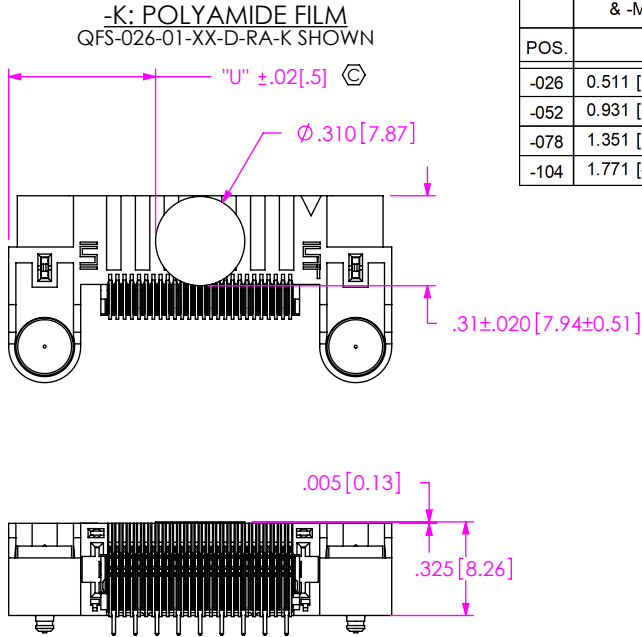
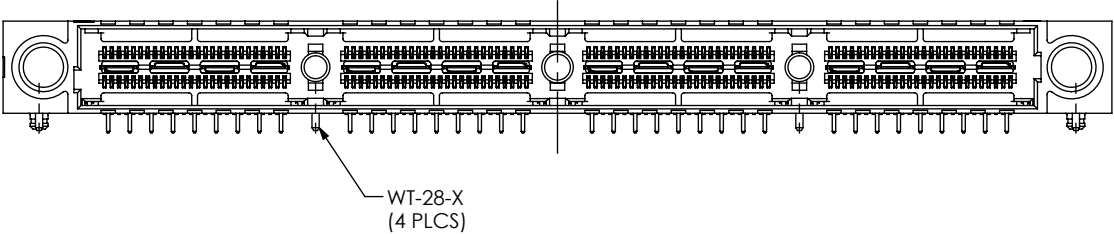
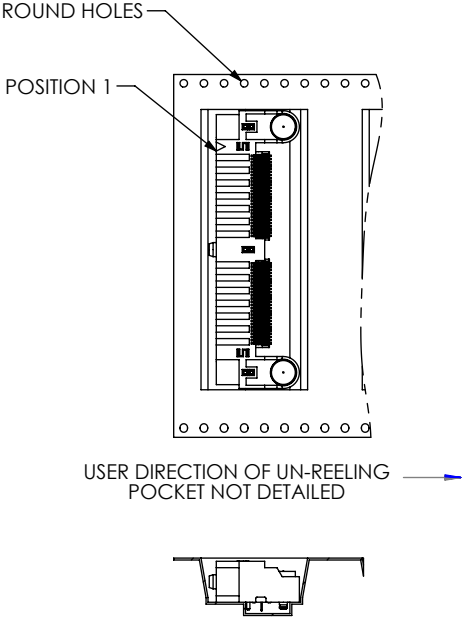


TABLE 4			
	STANDARD & -MG	-PC4	-PC8
POS.	"U"		
-026	0.511 [12.98]	0.774 [19.66]	0.931 [23.65]
-052	0.931 [23.65]	1.194 [30.33]	1.351 [34.32]
-078	1.351 [34.32]	1.614 [41.00]	1.771 [44.98]
-104	1.771 [44.98]	2.033 [51.65]	2.091 [53.11]

FIG 4  
(QFS-104-01-XX-D-RA SHOWN)  
(SAME AS FIG 1, DIFFERENT AS SHOWN)



PACKAGING VIEW  
-TR: TAPE & REEL OPTION  
(QFS-052-01-XX-D-RA-TR SHOWN)



• PROPRIETARY NOTE •  
THIS DOCUMENT CONTAINS CONFIDENTIAL AND PROPRIETARY INFORMATION AND ALL DESIGN, MANUFACTURING, REPRODUCTION, USE, PATENT RIGHTS AND SALES RIGHTS ARE EXPRESSLY RESERVED BY SAMTEC, INC. THIS DOCUMENT SHALL NOT BE DISCLOSED, IN WHOLE OR PART, TO ANY UNAUTHORIZED PERSON OR ENTITY NOR REPRODUCED, TRANSFERRED OR INCORPORATED IN ANY OTHER PROJECT IN ANY MANNER WITHOUT THE EXPRESS WRITTEN CONSENT OF SAMTEC, INC.

DO NOT SCALE DRAWING

SHEET SCALE: 6:1

**samtec**

520 PARK EAST BLVD, NEW ALBANY, IN 47150  
PHONE: 812-944-6733 FAX: 812-948-5047  
e-Mail info@SAMTEC.com code 55322

DESCRIPTION:  
.635mm DUAL ROW RIGHT ANGLE SOCKET ASSEMBLY

DWG. NO.  
QFS-XXX-XX-XX-D-RA-XXX-X-XX

BY: CLAY W 8/25/2006 SHEET 6 OF 6