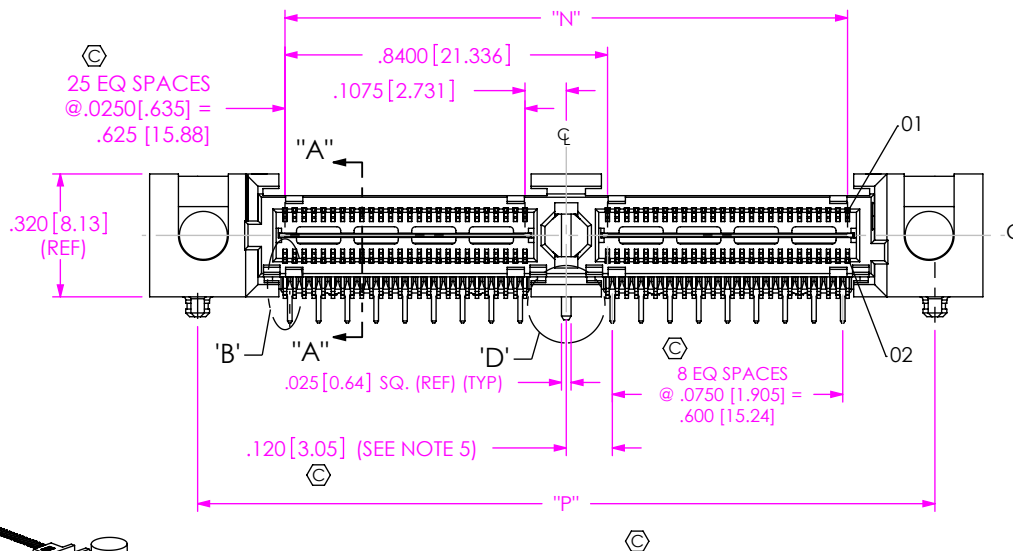
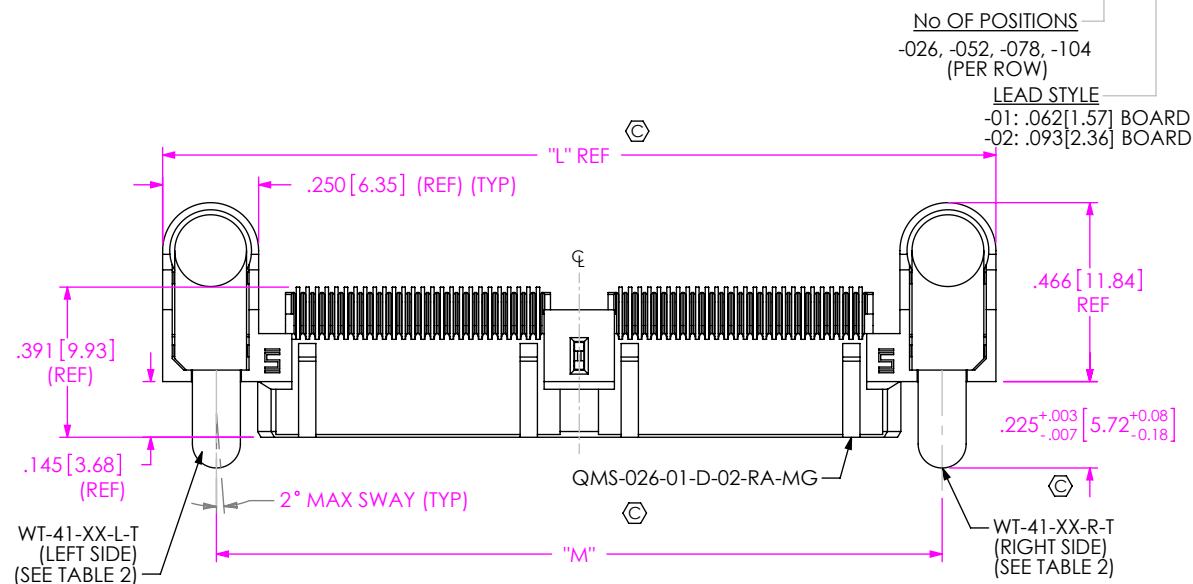


DO NOT
SCALE FROM
THIS PRINT

QMS-XXX-XX-XX-D-RA-XX-XXX-X-XX

FIG. 1
(QMS-052-XX-XX-D-RA-MG SHOWN)

NOTES:

1. REPRESENTS A CRITICAL DIMENSION.
2. MAXIMUM BURR ALLOWANCE: .0010 [0.02]
3. MINIMUM PUSHOUT FORCE: SIGNAL: .5 LB. [2.22N] SHIELD/GROUND, POWER PIN, COUNTERWEIGHT AND METAL GUIDE POST: 1 LB. [4.45N]
4. PARTS TO BE PACKAGED IN TRAYS AS STANDARD.
5. DOES NOT APPLY TO 1 BANK.
6. WT-28-XX-T NOT PRESENT ON SINGLE BANK WITH THE -MG OPTION
7. USE -Z- DATUM ZONE ONLY FOR MEASUREMENTS.
8. ORDERS WILL BE PACKAGED ACCORDING TO THE SAMTEC PACKAGING EFFICIENCY STANDARDS (SPES) FOUND ON WWW.SAMTEC.COM
9. ATTACH LABEL -4X2 TO EACH REEL

No OF POSITIONS

-026, -052, -078, -104
(PER ROW)

LEAD STYLE

-01: .062 [1.57] BOARD
-02: .093 [2.36] BOARD

PACKAGING (SEE NOTES 8 & 9)

BLANK: TRAY (SEE NOTE 4)

-TR: TAPE & REEL PACKAGING
 (-026 & -052 WITH NO OPTIONS)
 (-026 & -052 WITH -PC4)
 (-026 WITH -PC8)
 -FR: FULL REEL QTY TAPE & REEL
 (-026 & -052 WITH NO OPTIONS)
 (-026 & -052 WITH -PC4)
 (-026 WITH -PC8)

PICK & PLACE PAD

-K: KAPTON PAD (USE K-DOT-.310-.406-.005)

OPTION

-PC4: 4 POWER PINS
 (SEE FIG. 2, SHEET 5)
 (NOT AVAILABLE WITH -104 POS)
 (NOT AVAILABLE WITH -MG)
 -PC8: 8 POWER PINS
 (SEE FIG. 3, SHEET 5)
 (NOT AVAILABLE WITH -104 POS)
 (NOT AVAILABLE WITH -MG)

GUIDE POST

-MG: METAL GUIDE POST
 (LEAVE BLANK FOR PLASTIC OR PCX.
 PLASTIC AVAILABLE AS ASO ONLY.)

-RA: RIGHT ANGLE

ROW SPECIFICATION

-D: DOUBLE (USE QMS-XXX-01-D-XX-RA)

PLATING SPECIFICATION
(SEE TABLE 6, SHEET 4)

-SL: 10μ" GOLD IN CONTACT AREA, MATTE TIN TAIL
 -S: 30μ" GOLD IN CONTACT AREA, MATTE TIN TAIL
 -L: 10μ" GOLD IN CONTACT AREA, 3μ" GOLD ON TAIL
 -H: 30μ" GOLD IN CONTACT AREA, 3μ" GOLD ON TAIL

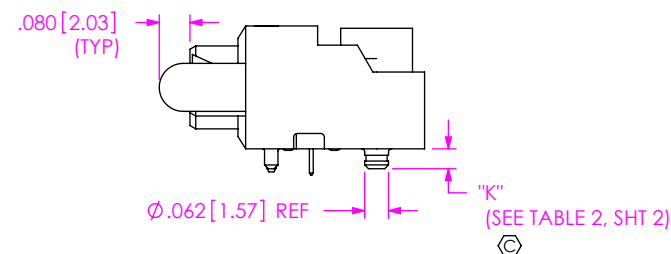


TABLE 5

POSITION	"L"	"M"	"N"	"P"
-026	1.330 [33.78]	1.050 [26.67]	.625 [15.88]	1.080 [27.43]
-052	2.170 [55.12]	1.890 [48.01]	1.465 [37.21]	1.920 [48.77]
-078	3.010 [76.45]	2.730 [69.34]	2.305 [58.55]	2.760 [70.10]
-104	3.850 [97.79]	3.570 [90.68]	3.145 [79.88]	3.600 [91.44]

UNLESS OTHERWISE SPECIFIED,
DIMENSIONS ARE IN INCHES.

TOLERANCES ARE:

DECIMALS ANGLES
 .XX: ±.01 [.3] 2°
 .XXX: ±.005 [.13]
 .XXXX: ±.0020 [.051]

PROPRIETARY NOTE

THIS DOCUMENT CONTAINS INFORMATION
 CONFIDENTIAL AND PROPRIETARY TO
 SAMTEC, INC. AND SHALL NOT BE REPRODUCED
 OR TRANSFERRED TO OTHER DOCUMENTS OR
 DISCLOSED TO OTHERS OR USED FOR ANY
 PURPOSE OTHER THAN THAT WHICH IT WAS
 OBTAINED WITHOUT THE EXPRESSED WRITTEN
 CONSENT OF SAMTEC, INC.

MATERIAL:

DO NOT SCALE DRAWING

SHEET SCALE: 2:1

INSULATOR: LCP, COLOR BLACK

CONTACT, POWER PIN, & GROUND PLANE: PHOS BRONZE
 COUNTERWEIGHT: BRASS
 METAL GUIDE POST: ZINC

DESCRIPTION:

.635mm DUAL ROW RIGHT ANGLE PLUG ASSEMBLY

DWG. NO.

QMS-XXX-XX-XX-D-RA-XX-XXX-X-XX

BY: KNOWLDEN 8/25/2006

SHEET 1 OF 6

c:\enterprisevault\DWG\MISC\MKTG\QMS-XXX-XX-XX-D-RA-XX-XXX-X-XX-MKT.SLDDRW

520 PARK EAST BLVD, NEW ALBANY, IN 47150
 PHONE: 812-944-6733 FAX: 812-948-5047
 e-Mail: info@SAMTEC.COM code 55322

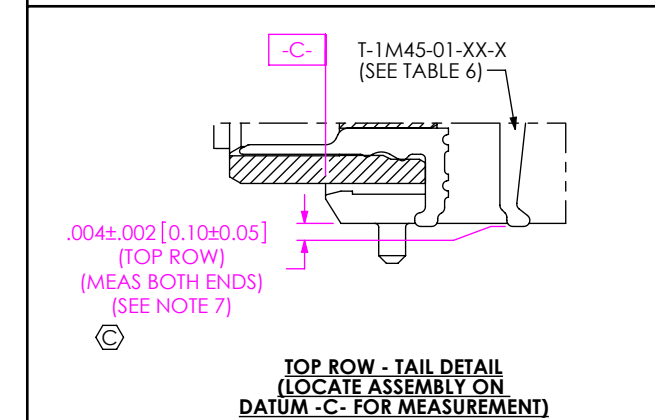
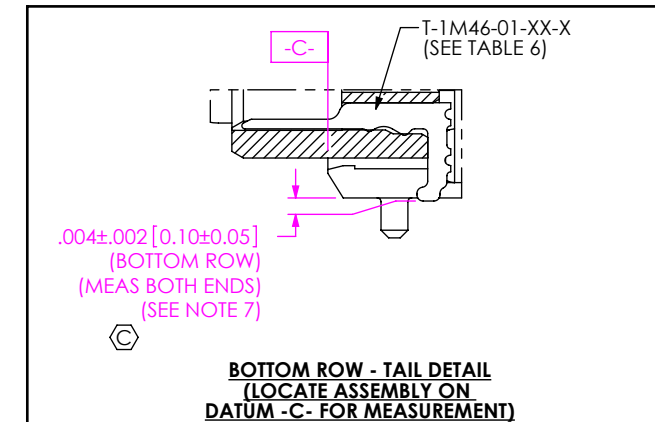
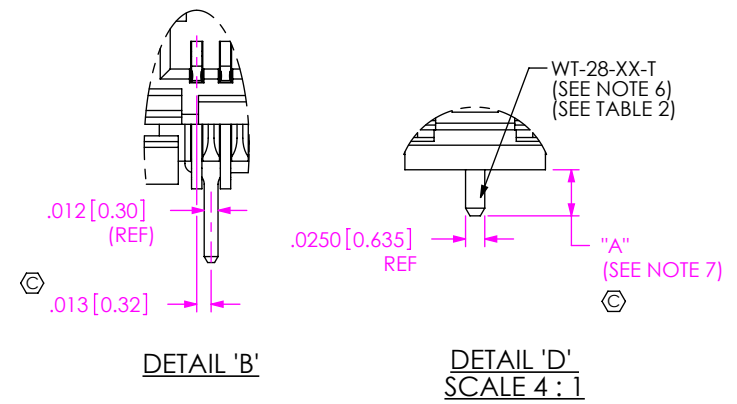
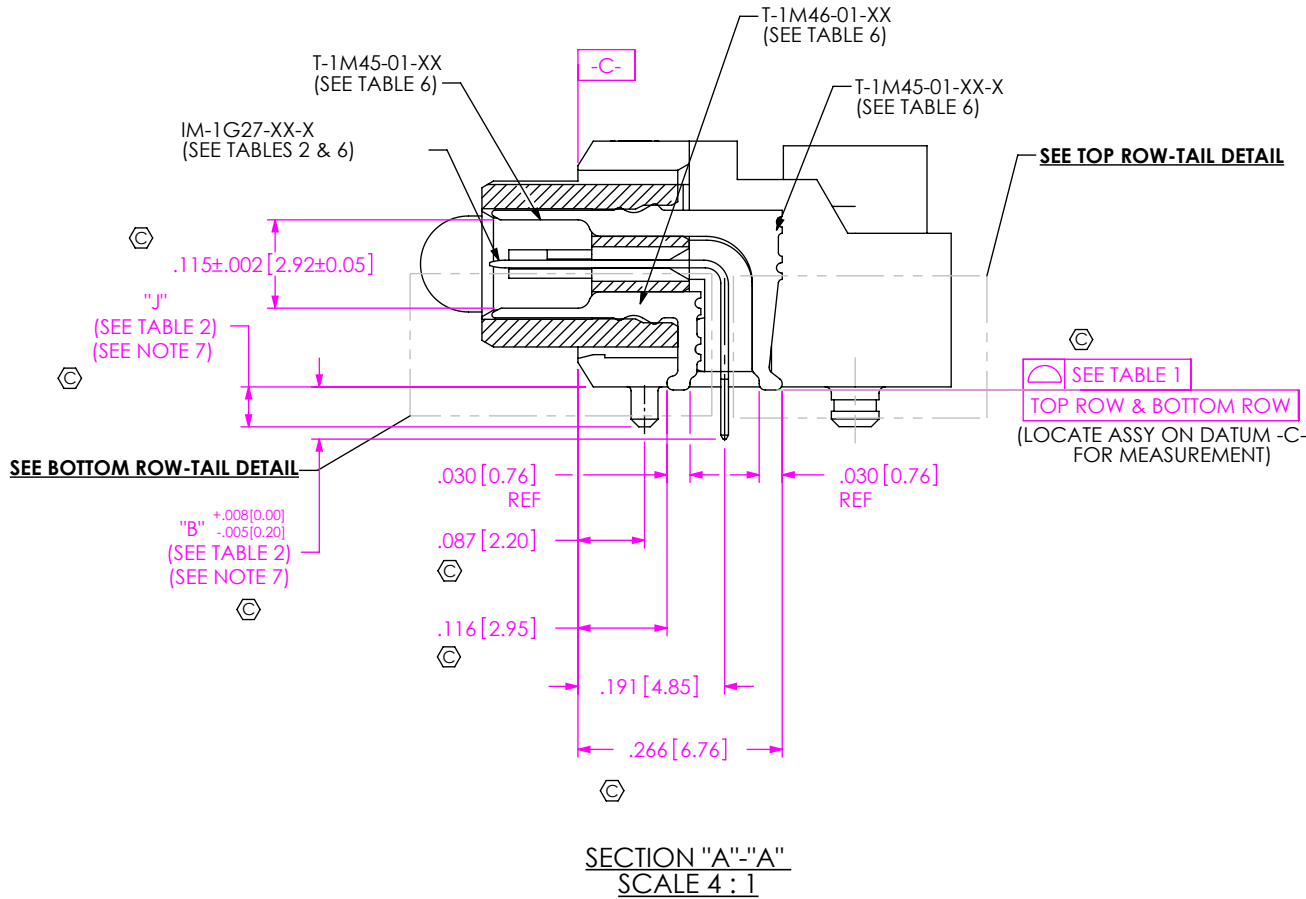


TABLE 1			
NO OF POSITIONS	COPLANARITY	STRAIGHTNESS ROW 1	STRAIGHTNESS ROW 2
-026 THRU -052	.004[.10]	.004[.10]	.004[.10]
-078 THRU -104	.006[.15]	.006[.15]	.006[.15]

TABLE 2									
LEAD STYLE	"A"	"B"	"C"	"J"	"K"	WT-28-XX-T	IM-1G27-XX-L	T-1R37-XX-T	WT-41-XX-X-T
-01	.060 [1.52]	.068 [1.73]	.055 [1.40]	.052 [1.32]	.052 [1.32]	WT-28-01-T	IM-1G27-01-L	T-1R37-01-T	WT-41-01-X-T
-02	.091 [2.31]	.099 [2.51]	.086 [2.18]	.083 [2.11]	.083 [2.11]	WT-28-02-T	IM-1G27-02-L	T-1R37-02-T	WT-41-02-X-T

PROPRIETARY NOTE
THIS DOCUMENT CONTAINS INFORMATION
CONFIDENTIAL AND PROPRIETARY TO
SAMTEC, INC. AND SHALL NOT BE REPRODUCED
OR TRANSFERRED TO OTHER DOCUMENTS OR
DISCLOSED TO OTHERS OR USED FOR ANY
PURPOSE OTHER THAN THAT WHICH IT WAS
OBTAINED WITHOUT THE EXPRESSED WRITTEN
CONSENT OF SAMTEC, INC.

DO NOT SCALE DRAWING

SHEET SCALE: 1:0.166667

samtec

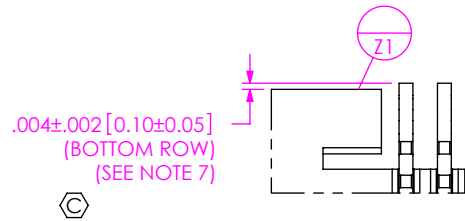
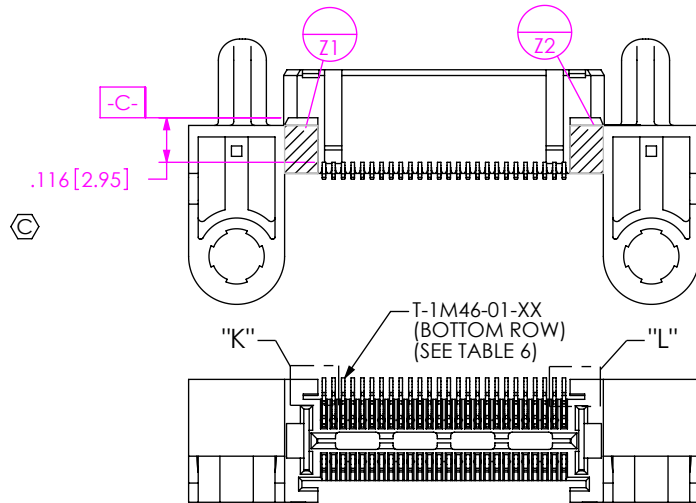
520 PARK EAST BLVD, NEW ALBANY, IN 47150
PHONE: 812-944-6733 FAX: 812-948-5047
e-Mail: info@SAMTEC.com code 55322

DESCRIPTION:
.635mm DUAL ROW RIGHT ANGLE PLUG ASSEMBLY
DWG. NO.

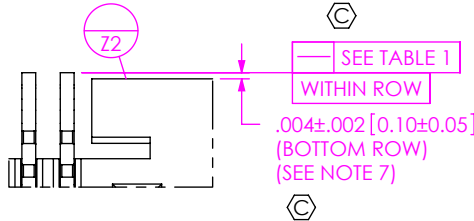
QMS-XXX-XX-XX-D-RA-XX-XXX-X-XX

BY: KNOWLDEN 8/25/2006 SHEET 2 OF 6

INSPECTION VIEW 1
(FILL BOTTOM ROW)

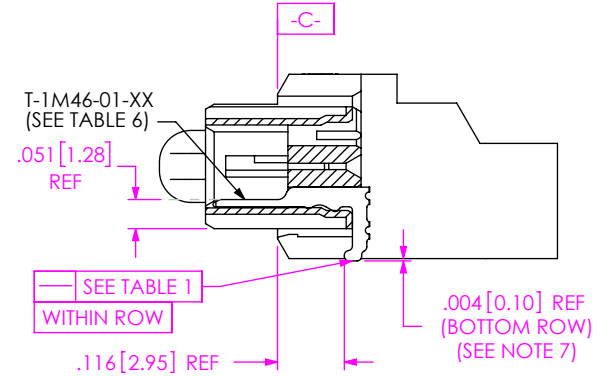
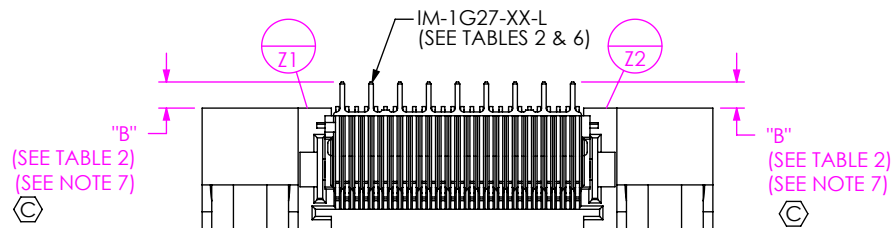
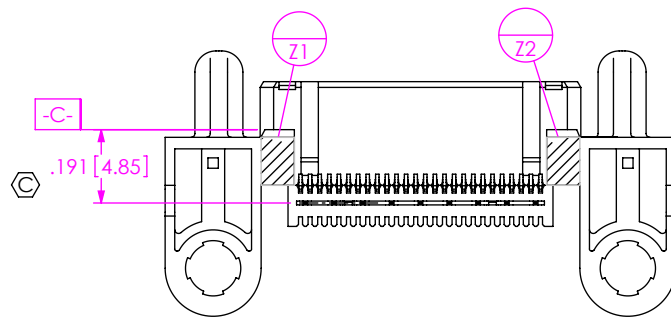


DETAIL "K"
SCALE 8:1

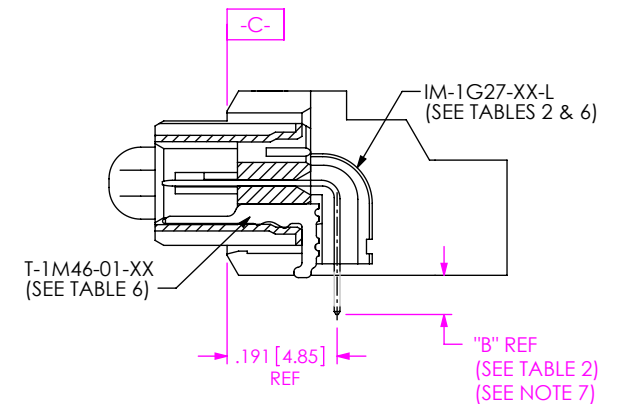


DETAIL "L"
SCALE 8:1

INSPECTION VIEW 2
(FILL IM-1G27)



IN-PROCESS 1
(FILL BOTTOM ROW)
(SEE INSPECTION VIEW 1 FOR ORIENTATION AND CPC'S)



IN-PROCESS 2
(FILL IM-1G27)
(SEE INSPECTION VIEW 2 FOR ORIENTATION AND CPC'S)

PROPRIETARY NOTE

THIS DOCUMENT CONTAINS INFORMATION
CONFIDENTIAL AND PROPRIETARY TO
SAMTEC, INC. AND SHALL NOT BE REPRODUCED
OR TRANSFERRED TO OTHER DOCUMENTS OR
DISCLOSED TO OTHERS OR USED FOR ANY
PURPOSE OTHER THAN THAT WHICH IT WAS
OBTAINED WITHOUT THE EXPRESSED WRITTEN
CONSENT OF SAMTEC, INC.

DO NOT SCALE DRAWING

SHEET SCALE: 1:0.166667

samtec

520 PARK EAST BLVD, NEW ALBANY, IN 47150
PHONE: 812-944-6733 FAX: 812-948-5047
e-Mail info@SAMTEC.com code 55322

DESCRIPTION:
.635mm DUAL ROW RIGHT ANGLE PLUG ASSEMBLY

DWG. NO.
QMS-XXX-XX-XX-D-RA-XX-XXX-X-XX

BY: KNOWLDEN 8/25/2006 SHEET 3 OF 6

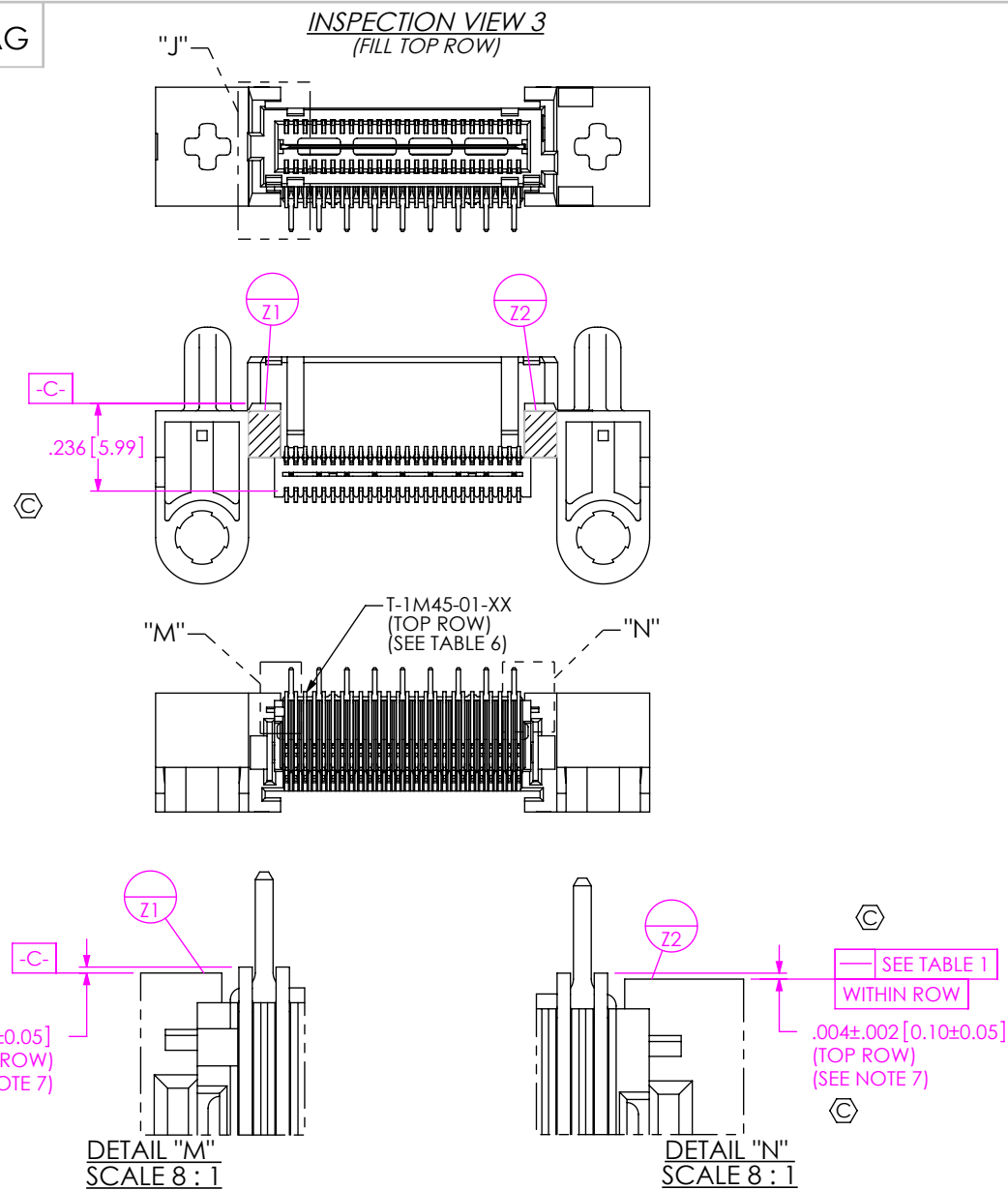
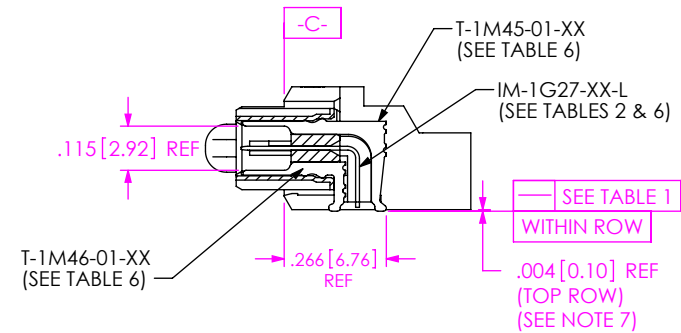
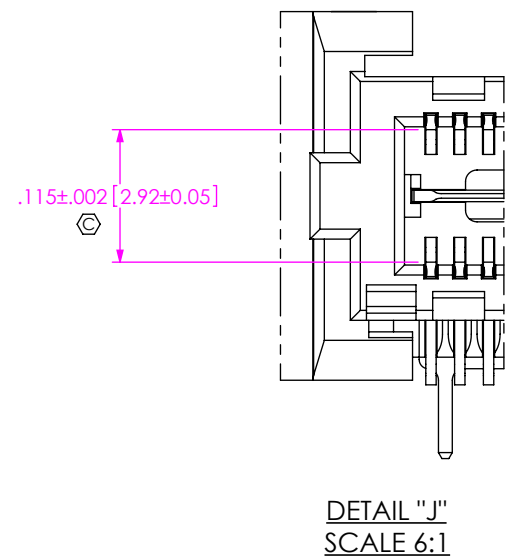


	TABLE 6: PLATING SPECIFICATIONS			
	CONTACT	CONTACT	GROUND PLANE	PCX CONTACTS
-SL	T-1M45-01-SL: 10µ" GOLD CONTACT, MATTE TIN TAIL	T-1M46-01-SL: 10µ" GOLD CONTACT, MATTE TIN TAIL	IM-1G27-XX-L: 10µ" GOLD CONTACT, MATTE TIN TAIL	T-1S69-XX-SL: 10µ" GOLD CONTACT, MATTE TIN TAIL
-S	T-1M45-01-S: 30µ" GOLD CONTACT, MATTE TIN TAIL	T-1M46-01-S: 30µ" GOLD CONTACT, MATTE TIN TAIL	IM-1G27-XX-L: 10µ" GOLD CONTACT, MATTE TIN TAIL	T-1S69-XX-S: 30µ" GOLD CONTACT, MATTE TIN TAIL
-L	T-1M45-01-L: 10µ" GOLD CONTACT, 3µ" GOLD TAIL	T-1M46-01-L: 10µ" GOLD CONTACT, 3µ" GOLD TAIL	IM-1G27-XX-L: 10µ" GOLD CONTACT, MATTE TIN TAIL	T-1S69-XX-SL: 10µ" GOLD CONTACT, MATTE TIN TAIL
-H	T-1M45-01-H: 30µ" GOLD CONTACT, 3µ" GOLD TAIL	T-1M46-01-H: 30µ" GOLD CONTACT, 3µ" GOLD TAIL	IM-1G27-XX-L: 10µ" GOLD CONTACT, MATTE TIN TAIL	T-1S69-XX-S: 30µ" GOLD CONTACT, MATTE TIN TAIL



IN-PROCESS 3
(FILL TOP ROW)
(SEE INSPECTION VIEW 3 FOR ORIENTATION AND CPC'S)



PROPRIETARY NOTE

THIS DOCUMENT CONTAINS INFORMATION
CONFIDENTIAL AND PROPRIETARY TO
SAMTEC, INC. AND SHALL NOT BE REPRODUCED
OR TRANSFERRED TO OTHER DOCUMENTS OR
DISCLOSED TO OTHERS OR USED FOR ANY
PURPOSE OTHER THAN THAT WHICH IT WAS
OBTAINED WITHOUT THE EXPRESSED WRITTEN
CONSENT OF SAMTEC, INC.

DO NOT SCALE DRAWING

SHEET SCALE: 1:0.166667

samtec

520 PARK EAST BLVD, NEW ALBANY, IN 47150
PHONE: 812-944-6733 FAX: 812-948-5047
e-Mail: info@SAMTEC.com code 55322

DESCRIPTION:
.635mm DUAL ROW RIGHT ANGLE PLUG ASSEMBLY

DWG. NO.
QMS-XXX-XX-XX-D-RA-XX-XXX-X-XX

BY: KNOWLDEN 8/25/2006 SHEET 4 OF 6

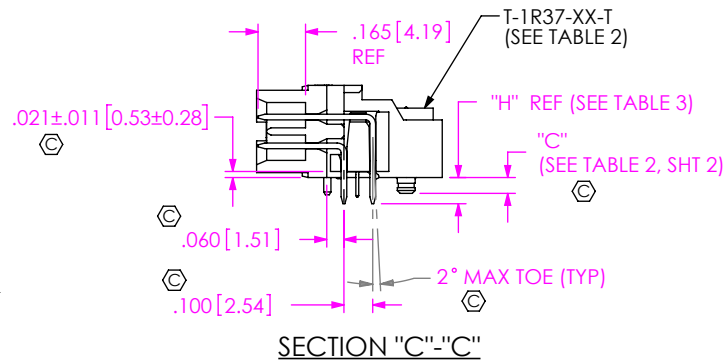
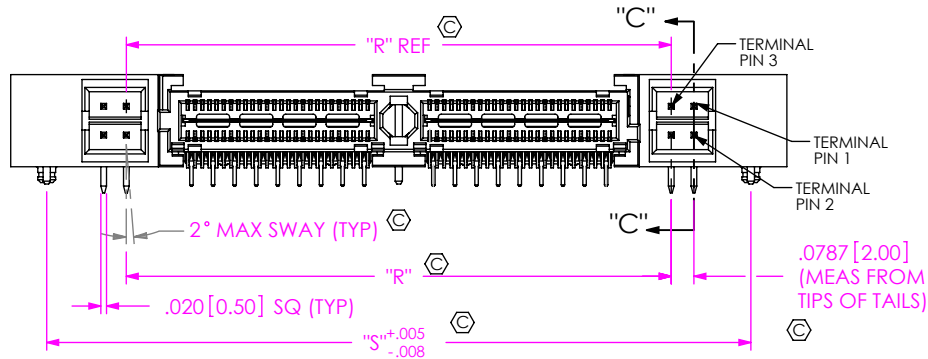
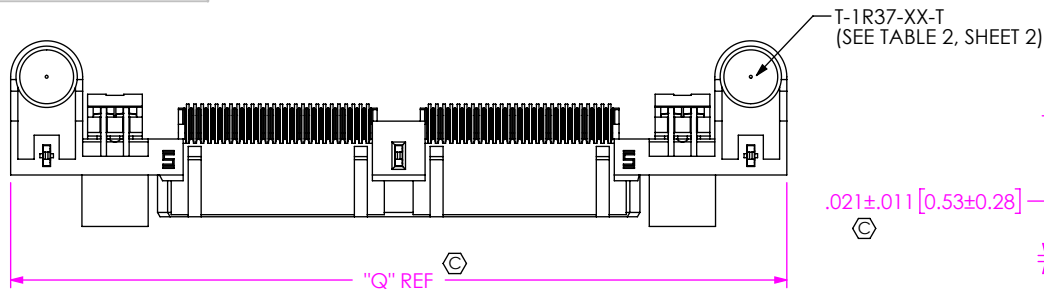
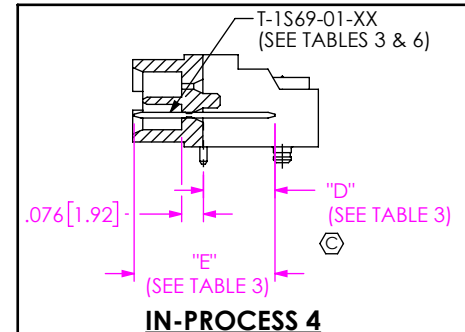
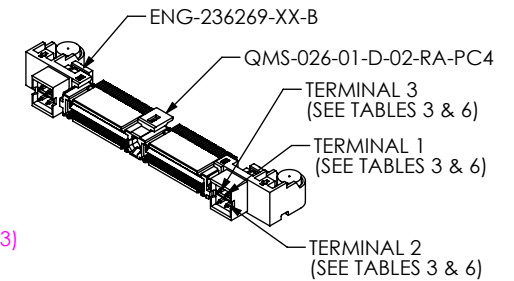
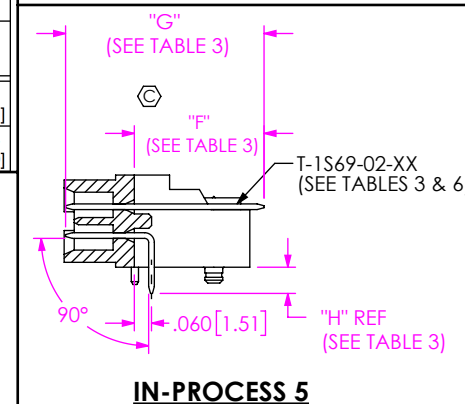


FIG 2
(QMS-052-XX-XX-D-RA-PC4 SHOWN)
(SAME AS FIG 1, DIFFERENT AS SHOWN)

TABLE 3							
LEAD STYLE	TERMINAL 1	TERMINAL 2	"D"	"E"	"F"	"G"	"H"
-01	T-1S69-01-XX	T-1S69-02-XX	.248 [6.30]	.489 [12.42]	.450 [11.43]	.689 [17.50]	.091 [2.31]
-02	T-1S69-03-XX	T-1S69-04-XX	.279 [7.09]	.520 [13.21]	.481 [12.22]	.720 [18.29]	.122 [3.10]



IN-PROCESS 4



IN-PROCESS 5

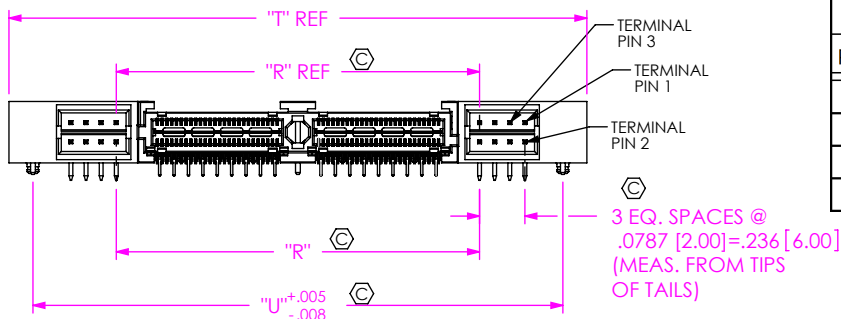
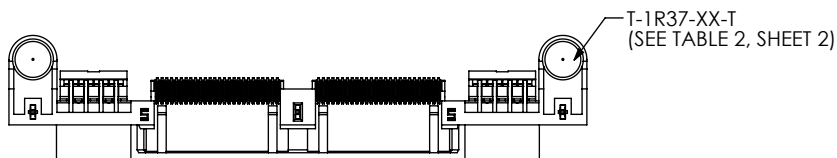


FIG 3
(QMS-052-XX-XX-D-RA-PC8 SHOWN)
(SAME AS FIG 2, DIFFERENT AS SHOWN)

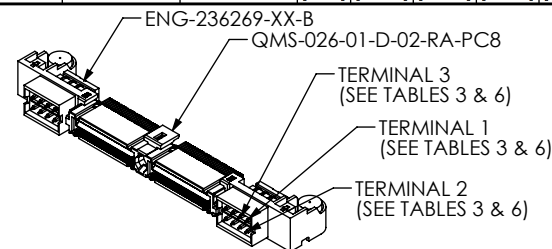


TABLE 7							
POSITION	"Q"	"R"	"S"	"T"	"U"	"V"	"W"
-026	1.855 [47.12]	1.052 [26.72]	1.605 [40.77]	2.170 [55.12]	1.920 [48.77]	1.050 [26.67]	1.080 [27.43]
-052	2.695 [68.45]	1.892 [48.06]	2.445 [62.10]	3.010 [76.45]	2.760 [70.10]	1.890 [48.01]	1.920 [48.77]
-078	3.535 [89.79]	2.732 [69.39]	3.285 [83.44]	3.850 [97.79]	3.600 [91.44]	2.730 [69.34]	2.760 [70.10]
-104	4.375 [111.13]	3.572 [90.73]	4.125 [104.78]	4.690 [119.13]	4.440 [112.78]	3.570 [90.68]	3.600 [91.44]

PROPRIETARY NOTE
THIS DOCUMENT CONTAINS INFORMATION
CONFIDENTIAL AND PROPRIETARY TO
SAMTEC, INC. AND SHALL NOT BE REPRODUCED
OR TRANSFERRED TO OTHER DOCUMENTS OR
DISCLOSED TO OTHERS OR USED FOR ANY
PURPOSE OTHER THAN THAT WHICH IT WAS
OBTAINED WITHOUT THE EXPRESSED WRITTEN
CONSENT OF SAMTEC, INC.

DO NOT SCALE DRAWING

SHEET SCALE: 1.5:1

samtec

520 PARK EAST BLVD, NEW ALBANY, IN 47150
PHONE: 812-944-6733 FAX: 812-948-5047
e-Mail: info@SAMTEC.com code 55322

DESCRIPTION:
.635mm DUAL ROW RIGHT ANGLE PLUG ASSEMBLY
DWG. NO.
QMS-XXX-XX-XX-D-RA-XX-XXX-X-XX
BY: KNOWLDEN 8/25/2006 SHEET 5 OF 6

REVISION AG

T-1R37-XX-T
(SEE TABLE 2, SHEET 2)

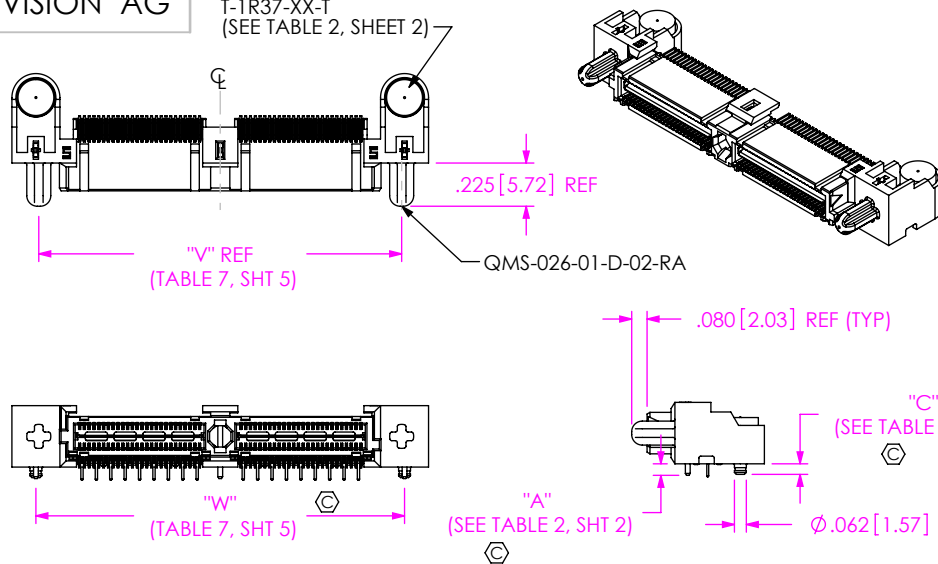
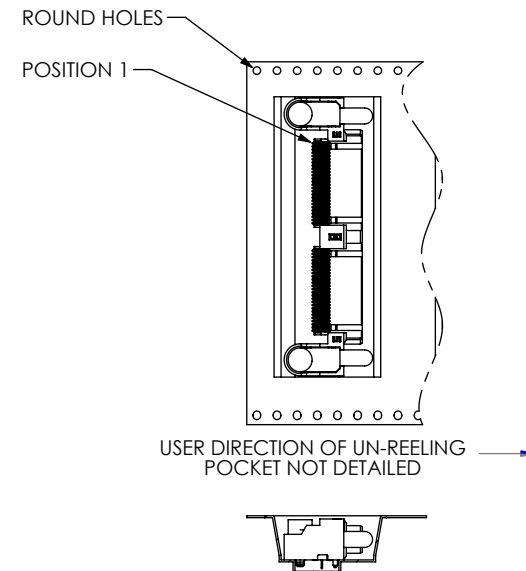


FIG 4
(QMS-052-01-XX-D-RA SHOWN)
(SAME AS FIG 1, DIFFERENT AS SHOWN)
AVAILABLE AS ASO ONLY

PACKAGING VIEW
-TR: TAPE & REEL OPTION
(QMS-052-01-XX-D-RA-MG-TR SHOWN)



-K: KAPTON PAD
QMS-026-01-XX-D-RA-MG-K SHOWN
(USE K-DOT-.310-.406-.005)
(FOR 1 AND 3 BANKS ONLY)

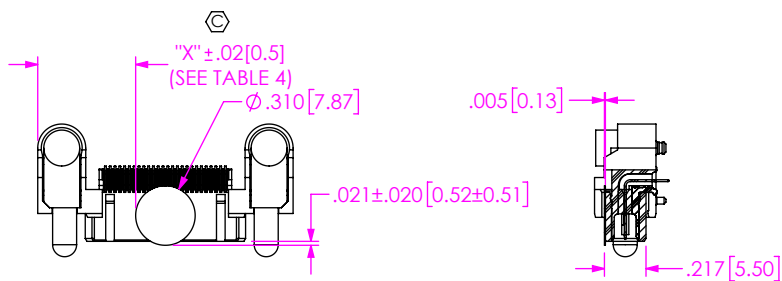
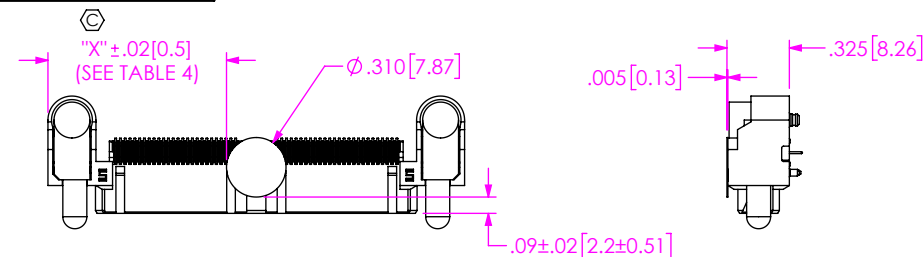


TABLE 4				
	STANDARD & -MG		-PC4	-PC8
POS.	"X"			
-026	0.511 [12.97]	0.774 [19.65]	0.931 [23.65]	
-052	0.931 [23.63]	1.194 [30.31]	1.351 [34.32]	
-078	1.351 [34.30]	1.614 [40.98]	1.771 [44.98]	
-104	1.771 [44.97]	2.034 [51.65]	2.191 [55.65]	

-K: KAPTON PAD
QMS-052-01-XX-D-RA-MG-K SHOWN
(USE K-DOT-.310-.406-.005)
(FOR 2 AND 4 BANKS ONLY)



PROPRIETARY NOTE

THIS DOCUMENT CONTAINS INFORMATION
CONFIDENTIAL AND PROPRIETARY TO
SAMTEC, INC. AND SHALL NOT BE REPRODUCED
OR TRANSFERRED TO OTHER DOCUMENTS OR
DISCLOSED TO OTHERS OR USED FOR ANY
PURPOSE OTHER THAN THAT WHICH IT WAS
OBTAINED WITHOUT THE EXPRESSED WRITTEN
CONSENT OF SAMTEC, INC.

DO NOT SCALE DRAWING

SHEET SCALE: 1:1

samtec

520 PARK EAST BLVD, NEW ALBANY, IN 47150
PHONE: 812-944-6733 FAX: 812-948-5047
e-Mail: info@SAMTEC.com code 55322

DESCRIPTION:
.635mm DUAL ROW RIGHT ANGLE PLUG ASSEMBLY

DWG. NO.
QMS-XXX-XX-XX-D-RA-XX-XXX-X-XX

BY: KNOWLDEN 8/25/2006 SHEET 6 OF 6