

FIG 1
QMSS-052-01-X-XX-EM2 DESIGN SHOWN

NOTES:

1. NOTE DELETED.
2. DIMENSION NOT AVAILABLE ON -026 POSITIONS.
3. DESIGNED IN ENGLISH

TABLE 1			
POSITION	"A"	"B"	"C"
-026	1.210[30.73]	---	1.330[33.78]
-052	2.050[52.07]	1.465[37.21]	2.170[55.12]
-078	2.890[73.41]	2.305[58.55]	3.010[76.45]
-104	3.730[94.74]	3.145[79.88]	3.850[97.79]
* -130	4.570[116.08]	3.985[101.22]	4.690[119.13]

* = NOT TOOLED

PROPRIETARY NOTE

THIS DOCUMENT CONTAINS INFORMATION
CONFIDENTIAL AND PROPRIETARY TO
SAMTEC, INC. AND SHALL NOT BE REPRODUCED
OR TRANSFERRED TO OTHER DOCUMENTS OR
DISCLOSED TO OTHERS OR USED FOR ANY
PURPOSE OTHER THAN THAT WHICH IT WAS
OBTAINED WITHOUT THE EXPRESSED WRITTEN
CONSENT OF SAMTEC, INC.

samtec

520 PARK EAST BLVD, NEW ALBANY, IN 47150
PHONE: 812-944-6733 FAX: 812-948-5047
e-Mail: info@SAMTEC.com code: 55322

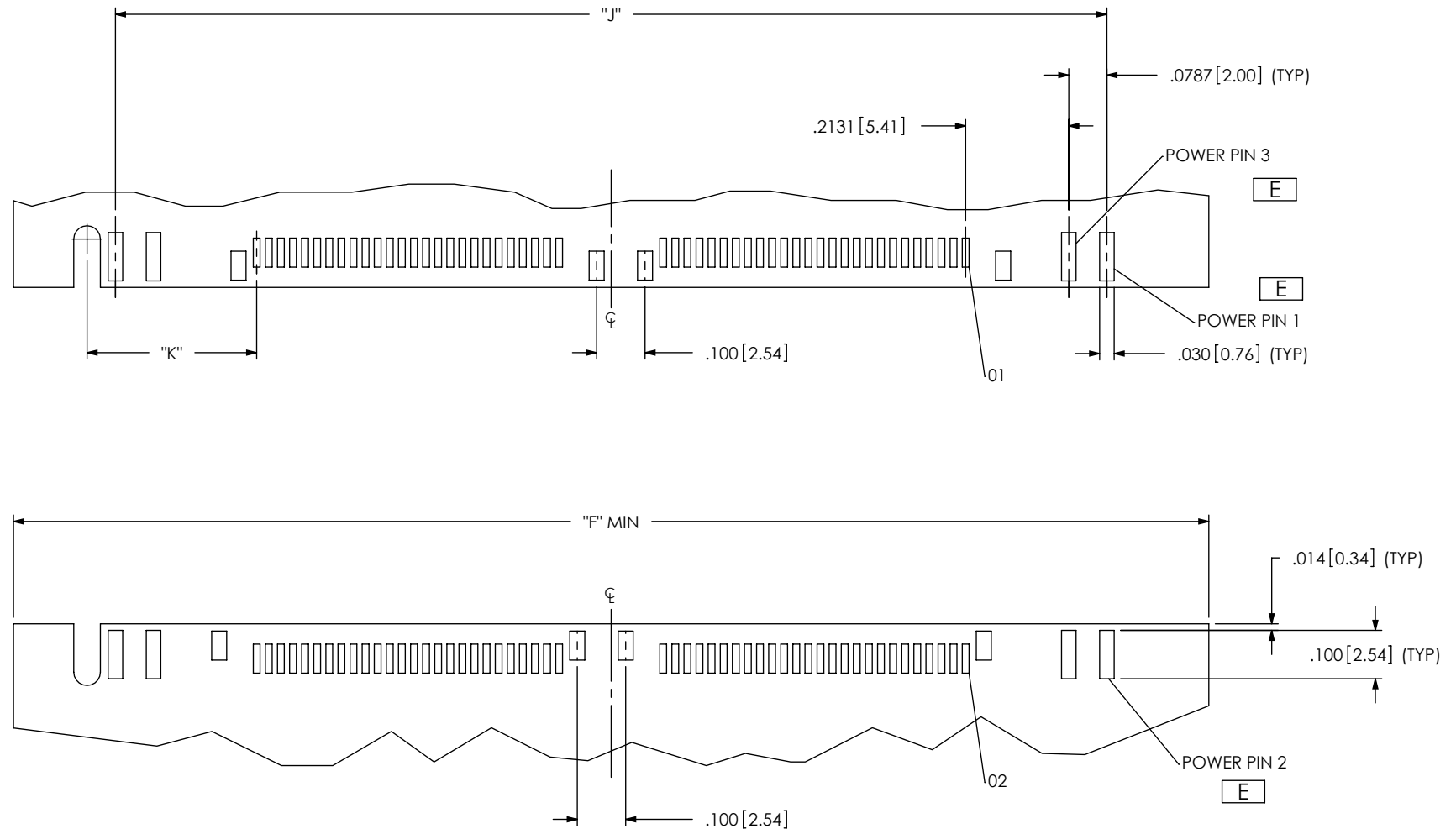


FIG 2

QMSS-052-01-X-XX-EM2-PC4 DESIGN SHOWN
[DIFFERENT AS SHOWN, OTHERWISE SAME AS FIGURE 1]

NOTES:

1. NOTE DELETED
2. DIMENSION NOT AVAILABLE ON -026 POSITIONS.
3. DESIGNED IN ENGLISH.

POSITION	-PCX	"F"	"J"	"K"
-026	-PC4	1.616[41.05]	1.209[30.70]	.3505
	-PC8	1.931[49.05]	1.524[38.70]	.5080
-052	-PC4	2.456[62.38]	2.049[52.04]	.3505
	-PC8	2.771[70.38]	2.364[60.04]	.5080
-078	-PC4	3.296[83.72]	2.889[73.37]	.3505
	-PC8	3.611[91.72]	3.204[81.37]	.5080

F:\DWG\MISC\Mktg\Footprint\QMSS-XXX-XX-X-XX-EM2-FOOTPRINT.SLDDRW

PROPRIETARY NOTE

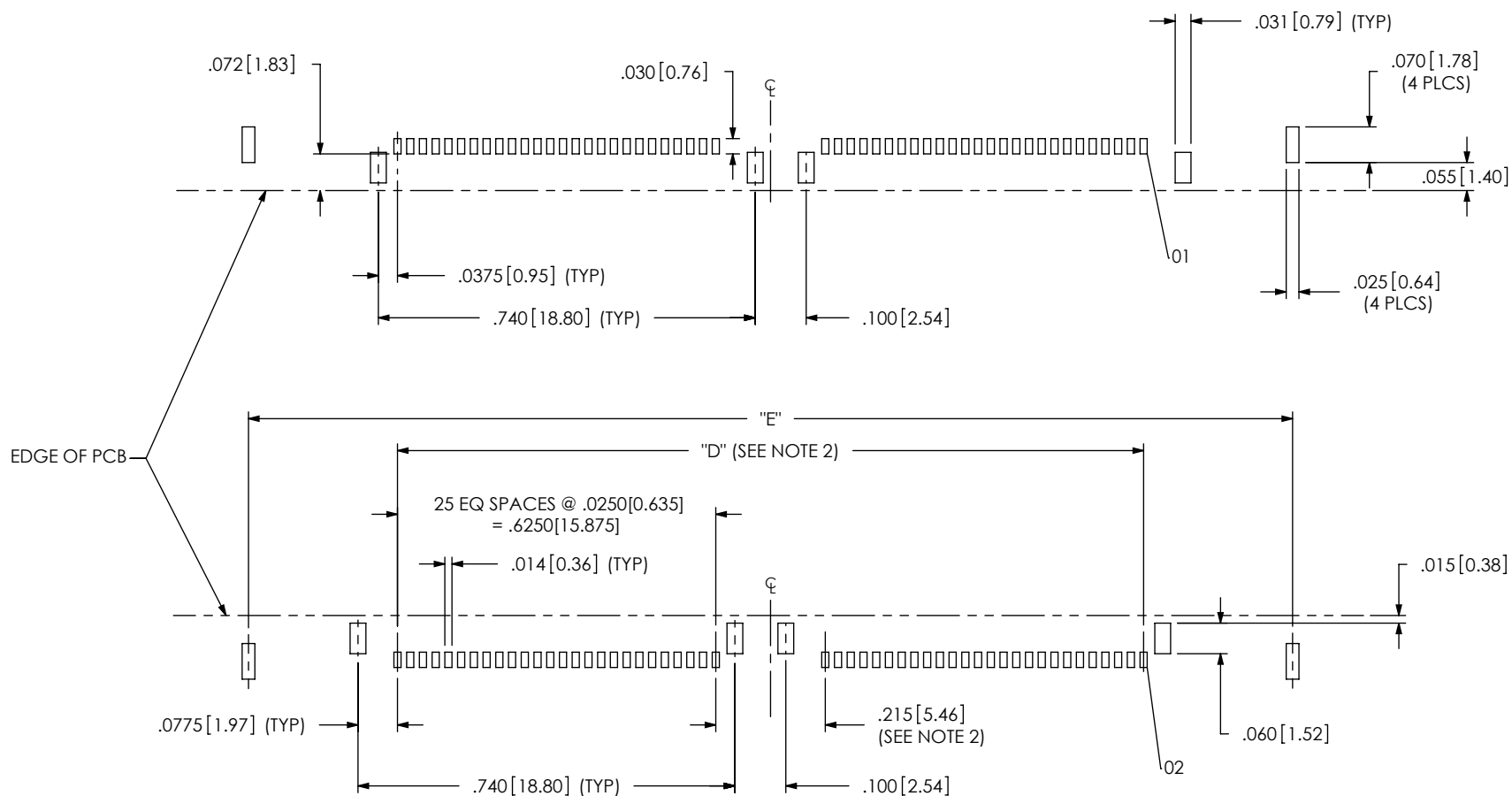
THIS DOCUMENT CONTAINS INFORMATION
CONFIDENTIAL AND PROPRIETARY TO
SAMTEC, INC. AND SHALL NOT BE REPRODUCED
OR TRANSFERRED TO OTHER DOCUMENTS OR
DISCLOSED TO OTHERS OR USED FOR ANY
PURPOSE OTHER THAN THAT WHICH IT WAS
OBTAINED WITHOUT THE EXPRESSED WRITTEN
CONSENT OF SAMTEC, INC.

samtec

520 PARK EAST BLVD, NEW ALBANY, IN 47150
PHONE: 812-944-6733 FAX: 812-948-5047
e-Mail: info@SAMTEC.com code: 55322

FIG 3

QMSS-052-01-X-XX-EM2 STENCIL DESIGN SHOWN



NOTES:

1. NOTE DELETED
2. DIMENSION NOT AVAILABLE ON -026 POSITIONS.
3. DESIGNED IN ENGLISH.
4. STENCIL TO BE .0060 [1.52] THICK.

TABLE 2		
POSITION	"D"	"E"
-026	—	1.210 [30.73]
-052	1.465 [37.21]	2.050 [52.07]
-078	2.305 [58.55]	2.890 [73.41]
-104	3.145 [79.88]	3.730 [94.74]
* -130	3.985 [101.22]	4.570 [116.08]

* = NOT TOOLED

PROPRIETARY NOTE

THIS DOCUMENT CONTAINS INFORMATION
CONFIDENTIAL AND PROPRIETARY TO
SAMTEC, INC. AND SHALL NOT BE REPRODUCED
OR TRANSFERRED TO OTHER DOCUMENTS OR
DISCLOSED TO OTHERS OR USED FOR ANY
PURPOSE OTHER THAN THAT WHICH IT WAS
OBTAINED WITHOUT THE EXPRESSED WRITTEN
CONSENT OF SAMTEC, INC.

samtec

520 PARK EAST BLVD, NEW ALBANY, IN 47150
PHONE: 812-944-6733 FAX: 812-948-5047
e-Mail: info@SAMTEC.com code: 55322

FIG 4

QMSS-052-01-X-XX-EM2-PC4 STENCIL DESIGN SHOWN
[DIFFERENT AS SHOWN, OTHERWISE SAME AS FIGURE 3]

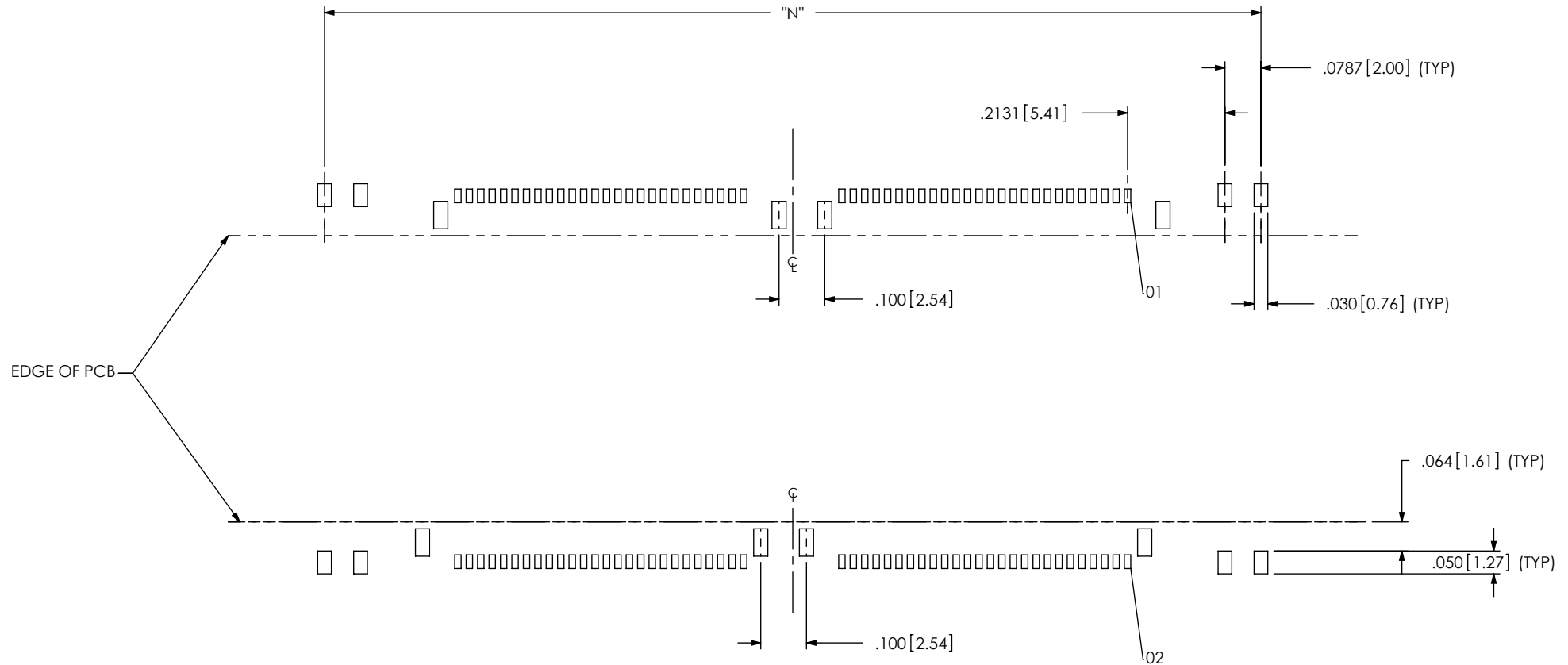


TABLE 4- PCX OPTION		
POSITION	-PCX	"N"
-026	-PC4	1.209[30.70]
	-PC8	1.524[38.70]
-052	-PC4	2.049[52.04]
	-PC8	2.364[60.04]
-078	-PC4	2.889[73.37]
	-PC8	3.204[81.37]

NOTES:

1. NOTE DELETED.
2. DIMENSION NOT AVAILABLE ON -026 POSITIONS.
3. DESIGNED IN ENGLISH.
4. STENCIL TO BE .0060[.152] THICK.

PROPRIETARY NOTE

THIS DOCUMENT CONTAINS INFORMATION
CONFIDENTIAL AND PROPRIETARY TO
SAMTEC, INC. AND SHALL NOT BE REPRODUCED
OR TRANSFERRED TO OTHER DOCUMENTS OR
DISCLOSED TO OTHERS OR USED FOR ANY
PURPOSE OTHER THAN THAT WHICH IT WAS
OBTAINED WITHOUT THE EXPRESSED WRITTEN
CONSENT OF SAMTEC, INC.

samtec

520 PARK EAST BLVD, NEW ALBANY, IN 47150
PHONE: 812-944-6733 FAX: 812-948-5047
e-Mail: info@SAMTEC.com code: 55322