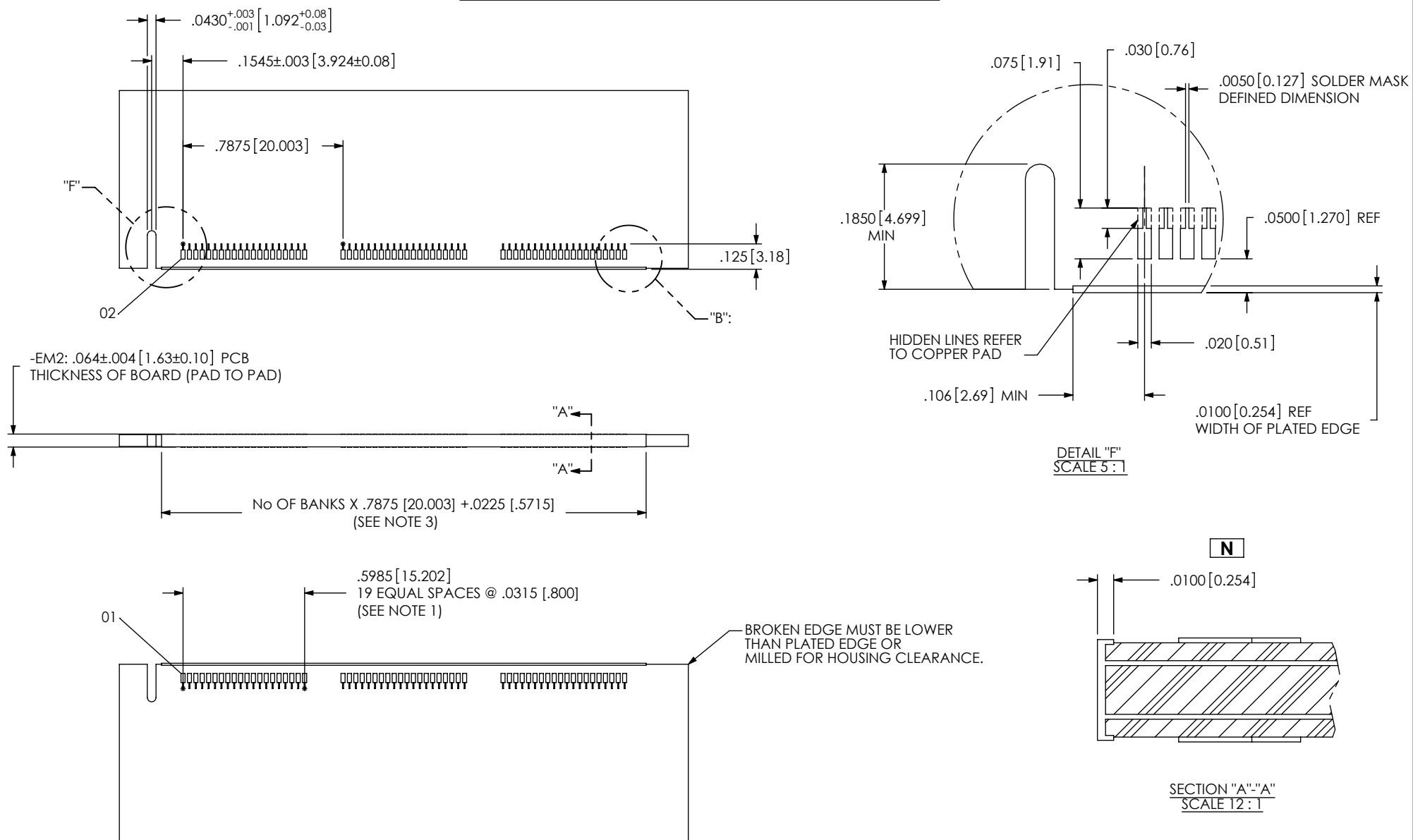


FIG 1: RECOMMENDED PCB LAYOUT FOR STANDARD DESIGNS



NOTES:

1. 1 BANK = 20 POSITIONS/SIDE FOR STANDARD VERSION.
2. NOTE DELETED.
3. PLATED EDGE MAY BE DIVIDED UP IN BANKS DEPENDING UPON DESIGNED FUNCTION.
4. REVIEW THE "EDGE MOUNT Q1 INTERFACES" ON THE PROCESSING LITERATURE SECTION OF SAMTEC.COM.

N

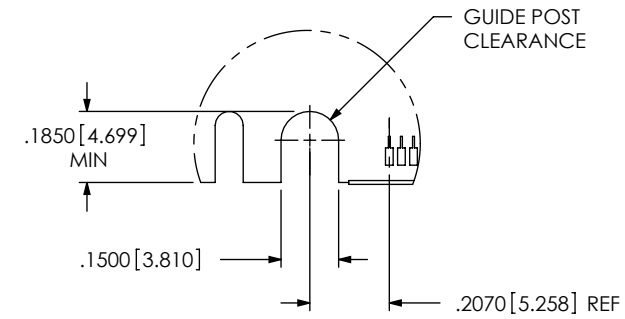
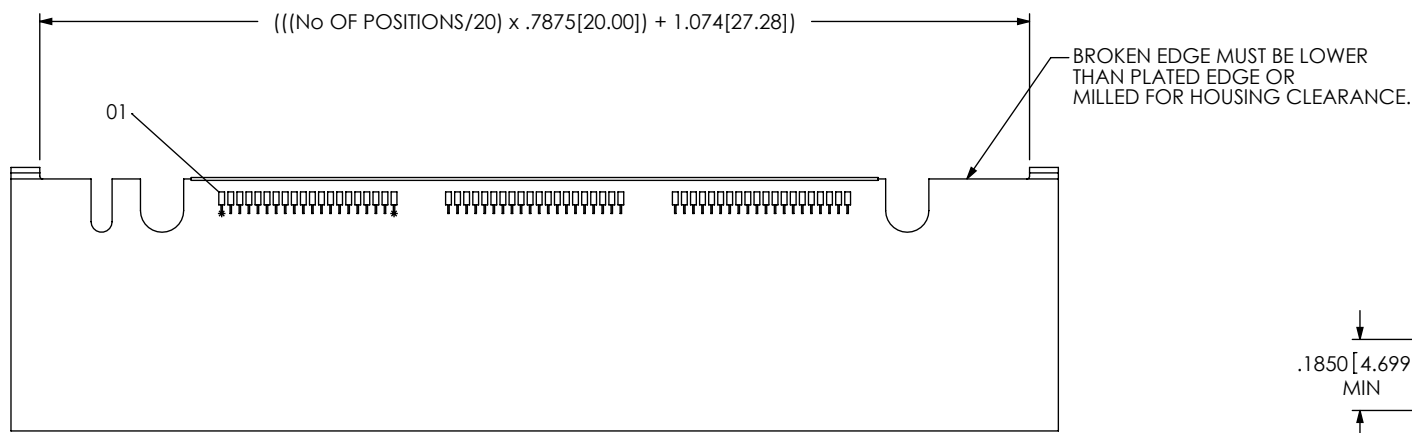
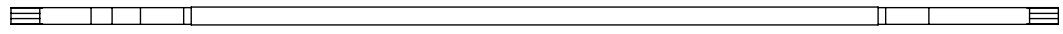
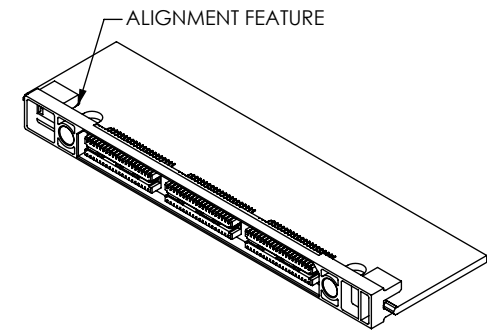
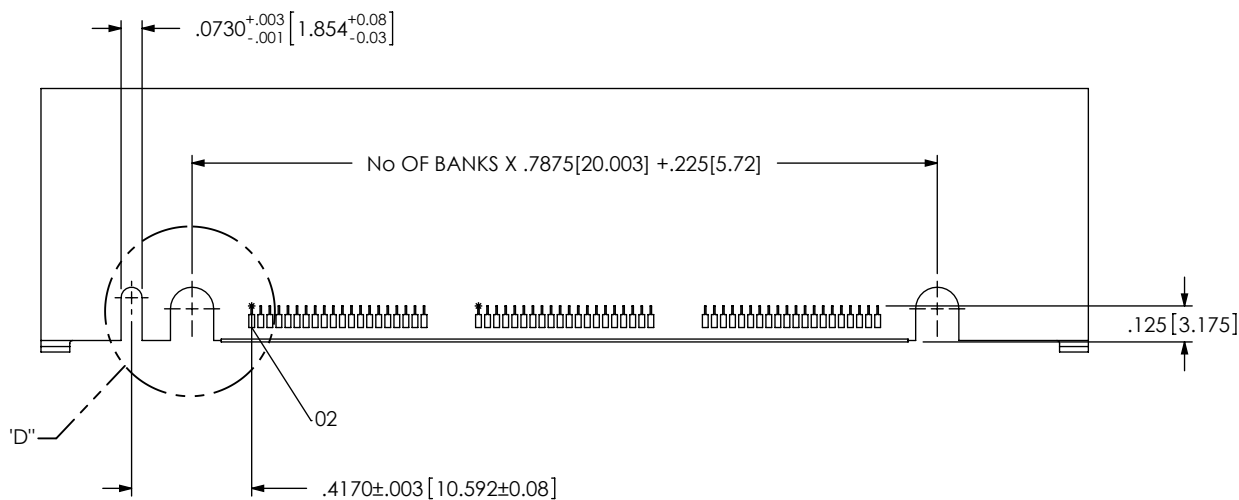
PROPRIETARY NOTE
 THIS DOCUMENT CONTAINS INFORMATION CONFIDENTIAL AND PROPRIETARY TO SAMTEC, INC. AND SHALL NOT BE REPRODUCED OR TRANSFERRED TO OTHER DOCUMENTS OR DISCLOSED TO OTHERS OR USED FOR ANY PURPOSE OTHER THAN THAT WHICH IT WAS OBTAINED WITHOUT THE EXPRESSED WRITTEN CONSENT OF SAMTEC, INC.

samtec

520 PARK EAST BLVD, NEW ALBANY, IN 47150
 PHONE: 812-944-6733 FAX: 812-948-5047
 e-Mail info@SAMTEC.com code 55322

FIG 2: RECOMMENDED PCB LAYOUT FOR -GP DESIGNS

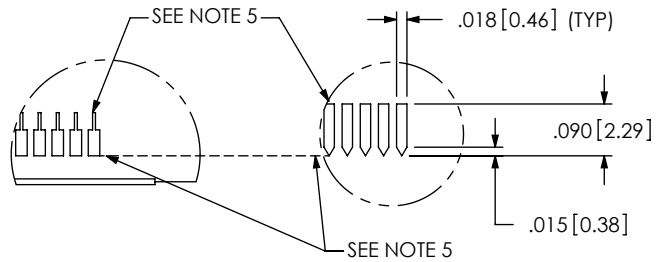
[DIFFERENT AS SHOWN, OTHERWISE SAME AS FIG 1]



DETAIL 'D'
SCALE 2:1

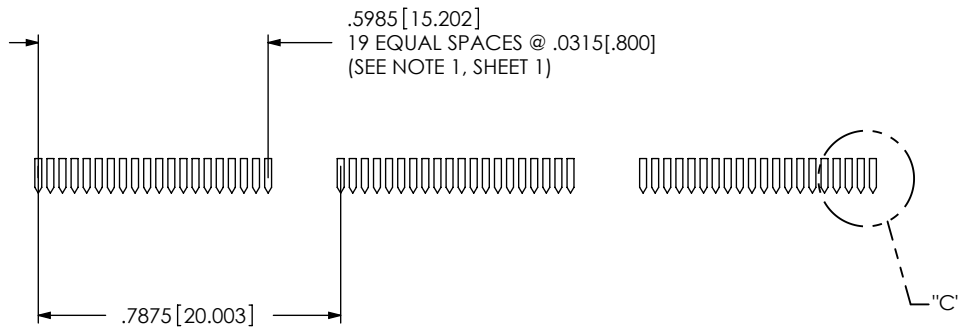
PROPRIETARY NOTE
THIS DOCUMENT CONTAINS INFORMATION CONFIDENTIAL AND PROPRIETARY TO SAMTEC, INC. AND SHALL NOT BE REPRODUCED OR TRANSFERRED TO OTHER DOCUMENTS OR DISCLOSED TO OTHERS OR USED FOR ANY PURPOSE OTHER THAN THAT WHICH IT WAS OBTAINED WITHOUT THE EXPRESSED WRITTEN CONSENT OF SAMTEC, INC.

samtec
520 PARK EAST BLVD, NEW ALBANY, IN 47150
PHONE: 812-944-6733 FAX: 812-948-5047
e-Mail info@SAMTEC.com code 55322



DETAIL "B":
PC BOARD VIEW
SCALE 3 : 1

DETAIL "C"
STENCIL VIEW
SCALE 3 : 1



NOTES:

- 4. STENCIL TO BE .0060[.152] THICK
- 5. ALIGN EDGES FOR STENCIL APPLICATION.

PROPRIETARY NOTE

THIS DOCUMENT CONTAINS INFORMATION CONFIDENTIAL AND PROPRIETARY TO SAMTEC, INC. AND SHALL NOT BE REPRODUCED OR TRANSFERRED TO OTHER DOCUMENTS OR DISCLOSED TO OTHERS OR USED FOR ANY PURPOSE OTHER THAN THAT WHICH IT WAS OBTAINED WITHOUT THE EXPRESSED WRITTEN CONSENT OF SAMTEC, INC.



520 PARK EAST BLVD, NEW ALBANY, IN 47150
PHONE: 812-944-6733 FAX: 812-948-5047
e-Mail info@SAMTEC.com code 55322