

DESIGNED & DIMENSIONED
IN INCHES[MILLIMETERS]

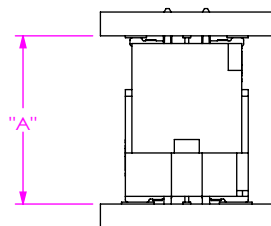


FIG 1
QMSS-D MATED WITH QFSS-D

TABLE 1								
QMSS-D	QFSS-04.25-D		WIPE					
			SIGNAL PIN		POWER PIN		GROUND PLANE	
	"A" FULLY MATED	"A" MAX	FULLY MATED	MIN	FULLY MATED	MIN	FULLY MATED	MIN
-06.75	.438 [11.13]	.479 [12.17]	.056 [1.42]	.015 [0.38]	.068 [1.73]	.027 [0.69]	.081 [2.06]	.040 [1.02]

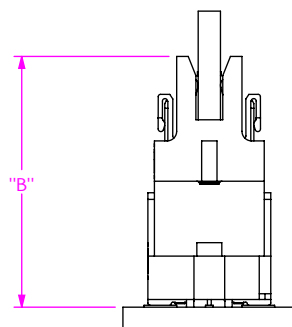


FIG 2
QMSS-EM2 MATED WITH QFSS-D

TABLE 2								
QMSS-EM2	QFSS-04.25-D		WIPE					
			SIGNAL PIN		POWER PIN		GROUND PLANE	
	"B" FULLY MATED	"B" MAX	FULLY MATED	MIN	FULLY MATED	MIN	FULLY MATED	MIN
-01	.653 [16.59]	.700 [17.78]	.062 [1.57]	.015 [0.38]	.071 [1.80]	.024 [0.61]	.081 [2.06]	.034 [0.86]

NOTES:

1. DRAWING ILLUSTRATES EFFECTIVE MATING RANGE OF CONNECTORS IN VARIOUS CONFIGURATIONS
2. ALTHOUGH MAX DIMENSIONS ARE LISTED SAMTEC RECOMMENDS FULLY MATING COMPONENTS.
3. ALL DIMENSIONS BASED ON NOMINAL VALUES FOR SAMTEC RECOMMENDED PCB LAYOUTS.

• PROPRIETARY NOTE •
THIS DOCUMENT CONTAINS CONFIDENTIAL AND PROPRIETARY INFORMATION AND ALL DESIGN, MANUFACTURING, REPRODUCTION, USE, PATENT RIGHTS AND SALES RIGHTS ARE EXPRESSLY RESERVED BY SAMTEC, INC. THIS DOCUMENT SHALL NOT BE DISCLOSED, IN WHOLE OR PART, TO ANY UNAUTHORIZED PERSON OR ENTITY NOR REPRODUCED, TRANSFERRED OR INCORPORATED IN ANY OTHER PROJECT IN ANY MANNER WITHOUT THE EXPRESS WRITTEN CONSENT OF SAMTEC, INC.

samtec

520 PARK EAST BLVD, NEW ALBANY, IN 47150
PHONE: 812-944-6733 FAX: 812-948-5047
e-Mail: info@SAMTEC.com code: 55322