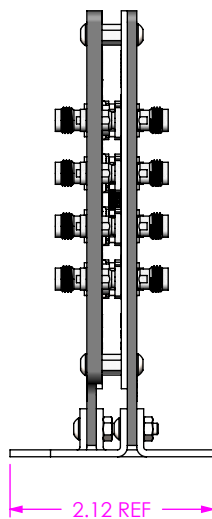
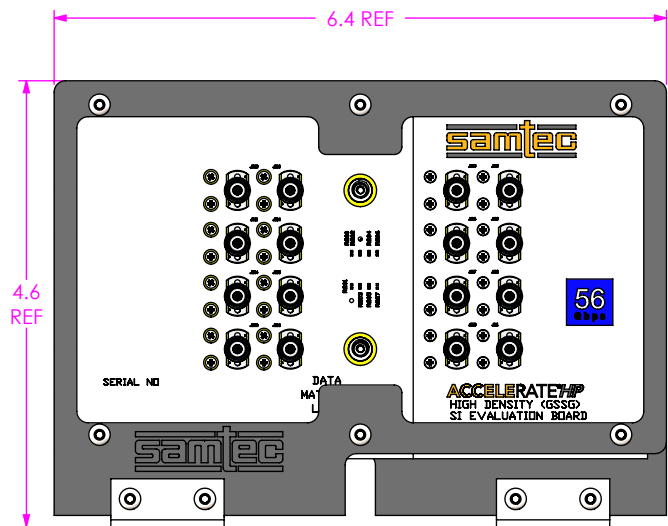


DO NOT SCALE FROM THIS PRINT



**SMA STYLE**  
 -1.85: 1.85mm SMAS  
 -2.40: 2.40 mm SMAS  
 -2.92: 2.92 mm SMAS

**BOARD TO BOARD HEIGHT**  
 -005: 5.0mm  
 -010: 10.0mm

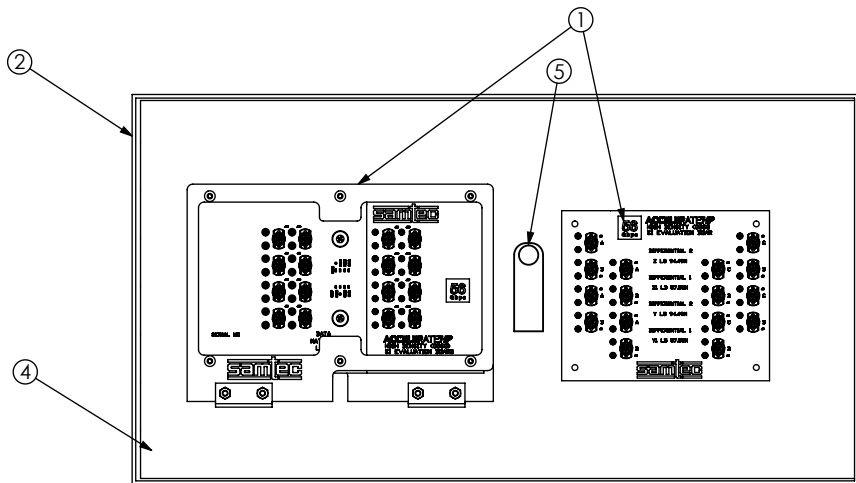


TABLE A		
SMA STYLE	STACK HEIGHT	PART NUMBER
1.85	005	S-REF-218313-1.85-005
	010	S-REF-218313-1.85-010
2.40	005	S-REF-218313-2.40-005
	010	S-REF-218313-2.40-010
2.92	005	S-REF-218313-2.92-005
	010	S-REF-218313-2.92-010

SIGNAL MAPPING																	
APM6	REF DES	J101	J102	J103	J104	J105	J106	J107	J108	J109	J110	J111	J112	J113	J114	J115	J116
	CONNECTOR PIN	A9	A10	A12	A13	B8	B9	B11	B12	C9	C10	C12	C13	D8	D9	D11	D12
APF6	CONNECTOR PIN	A9	A10	A12	A13	B8	B9	B11	B12	C9	C10	C12	C13	D8	D9	D11	D12
	REF DES	J1201	J202	J203	J204	J205	J206	J207	J208	J209	J210	J211	J212	J213	J214	J215	J216

NOTES:  
 1. ESD BAGS NOT SHOWN FOR CLARITY

BOM TABLE				
ITEM	PART NUMBER	QTY	COST QTY	DESCRIPTION
1	SEE TABLE A	1	1	EVALUATION KIT
2	FP-FMC004	1	1	BOX
3	S-FMC010	1	1	SLEVE
4	F-FMC005	1	1	FOAM
5	CCS-207056-01-MC	1	1	FLASH DRIVE
6	LABEL-MAIL-1IN-CLR	2	2	LABEL

TOLERANCES DO NOT APPLY TO REFERENCE DIMENSIONS. UNLESS OTHERWISE SPECIFIED, DIMENSIONS ARE IN INCHES. TOLERANCES ARE:  
 DECIMALS .XX: ±.01 [.3]  
 .XXX: ±.005 [.13]  
 .XXXX: ±.0020 [.051]

ANGLES 2°

PROPRIETARY NOTE  
 THIS DOCUMENT CONTAINS CONFIDENTIAL AND PROPRIETARY INFORMATION AND ALL DESIGN, MANUFACTURING, REPRODUCTION, USE, PATENT RIGHTS AND SALES RIGHTS ARE EXPRESSLY RESERVED BY SAMTEC, INC. THIS DOCUMENT SHALL NOT BE DISCLOSED, IN WHOLE OR PART, TO ANY UNAUTHORIZED PERSON OR ENTITY NOR REPRODUCED, TRANSFERRED OR INCORPORATED IN ANY OTHER PROJECT IN ANY MANNER WITHOUT THE EXPRESS WRITTEN CONSENT OF SAMTEC, INC.

DO NOT SCALE DRAWING SHEET SCALE: 1:4

MATERIAL:

F:\DWG\MISC\MKTG\REF-218313-X.XX-XXX-MKT.SLDRW

520 PARK EAST BLVD, NEW ALBANY, IN 47150  
 PHONE: 812-944-6733 FAX: 812-948-5047  
 e-Mail info@SAMTEC.com code 53322

DESCRIPTION:  
 APX6 EVALUATION PLATFORM

DWG. NO.  
**REF-218313-X.XX-XXX**

BY:CHRISTIAN S 12/20/2022 SHEET 1 OF 1