

DO NOT SCALE FROM THIS PRINT

OPTION
-01: 6" & 10" HDR CABLE

SMA STYLE
-1.85: 1.85 mm SMAS
-2.40: 2.40mm SMAS
-2.92: 2.92mm SMAS

SIGNAL MAPPING																																	
CPI	REF DES	J2	J3	J4	J5	J6	J7	J8	J9	J10	J11	J12	J13	J14	J15	J16	J17	J18	J19	J20	J21	J22	J23	J24	J25	J26	J27	J28	J29	J30	J31	J32	J33
	CONNECTOR PIN	A02	A03	A05	A06	A08	A09	A11	A12	A14	A15	A17	A18	A20	A21	A23	A24	B02	B03	B05	B06	B08	B09	B11	B12	B14	B15	B17	B18	B20	B21	B23	B24
FQSFP-D8	CONNECTOR PIN	33	34	36	37	71	72	74	75	44	43	41	40	6	5	3	2	18	17	15	14	56	55	53	52	59	60	62	63	21	22	24	25
	MSA DEF	TX3p	TX3n	TX1p	TX1n	TX7p	TX7n	TX5p	TX5n	TX8p	TX8n	TX6p	TX6n	TX4p	TX4n	TX2p	TX3n	RX1n	RX1p	RX3n	RX3p	RX5n	RX5p	RX7n	RX7p	RX6n	RX6p	RX8n	RX8p	RX2n	RX2p	RX4n	RX4p
	REF DES	J14	J15	J16	J17	J21	J20	J19	J18	J8	J9	J10	J11	J3	J2						J5	J4			J6	J7					J12	J13	

BOM TABLE				
ITEM	PART NUMBER	QTY	COST QTY	DESCRIPTION
1	SEE TABLE A	1	1	EVALUATION KIT
2	FP-FMC004	1	1	BOX
3	S-FMC010	1	1	SLEEVE
4	CCS-207056-01-MC	1	1	FLASH DRIVE
5	LABEL-MAIL-1IN-CLR	2	2	LABEL

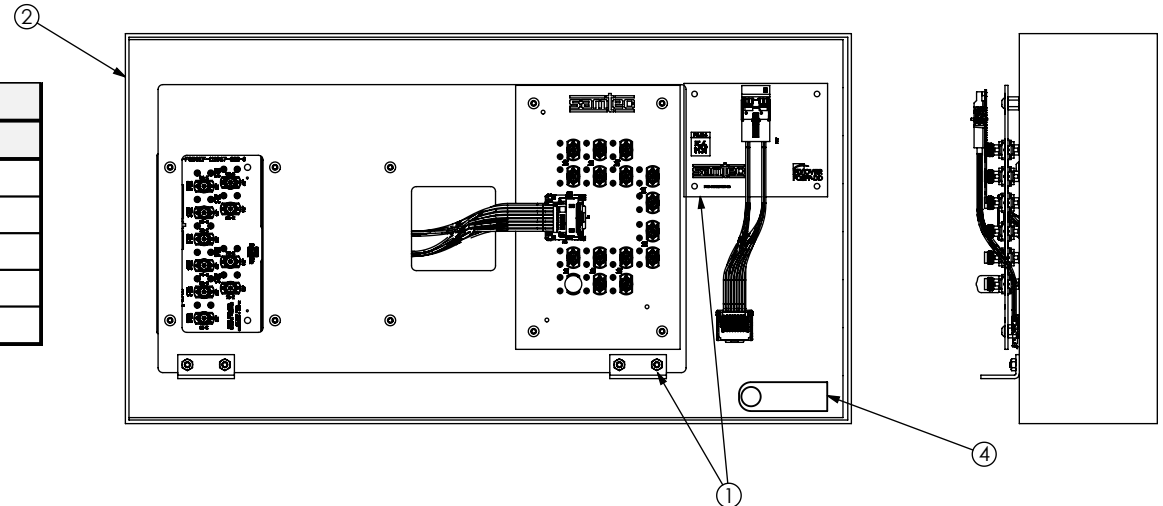
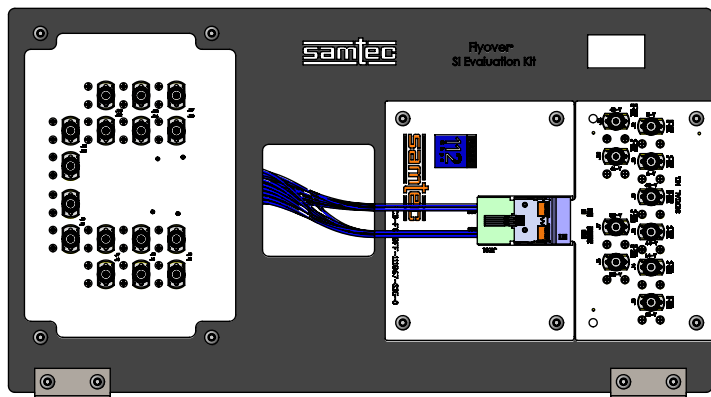


TABLE A: EVAL KIT	
SMA STYLE	PART NUMBER
1.85	S-REF-226551-1.85-XX
2.40	S-REF-226551-2.40-XX
2.92	S-REF-226551-2.92-XX

NOTES:
1. ESD BAGS NOT SHOWN FOR CLARITY
2. ALL ITEMS TO BE BAGGED SEPERATELY
3. NOTE DELETED



TOLERANCES DO NOT APPLY TO REFERENCE DIMENSIONS, UNLESS OTHERWISE SPECIFIED, DIMENSIONS ARE IN INCHES.
TOLERANCES ARE:
DECIMALS .XX: ±.01 [.3]
.XXX: ±.005 [.13]
.XXXX: ±.0020 [.051]
ANGLES 2°

PROPRIETARY NOTE
THIS DOCUMENT CONTAINS CONFIDENTIAL AND PROPRIETARY INFORMATION AND ALL DESIGN, MANUFACTURING, REPRODUCTION, USE, PATENT RIGHTS AND SALES RIGHTS ARE EXPRESSLY RESERVED BY SAMTEC, INC. THIS DOCUMENT SHALL NOT BE DISCLOSED, IN WHOLE OR PART, TO ANY UNAUTHORIZED PERSON OR ENTITY NOR REPRODUCED, TRANSFERRED OR INCORPORATED IN ANY OTHER PROJECT IN ANY MANNER WITHOUT THE EXPRESS WRITTEN CONSENT OF SAMTEC, INC.



520 PARK EAST BLVD, NEW ALBANY, IN 47150
PHONE: 812-944-6733 FAX: 812-948-5047
e-Mail info@SAMTEC.com code 53322

MATERIAL:	DO NOT SCALE DRAWING SHEET SCALE: 1:8	DESCRIPTION: FQSFP-D8 TO CPC TEST KIT
		DWG. NO. REF-226551-X.XX-XX
		BY:CHRISTIAN S. 06/07/2023 SHEET 1 OF 1