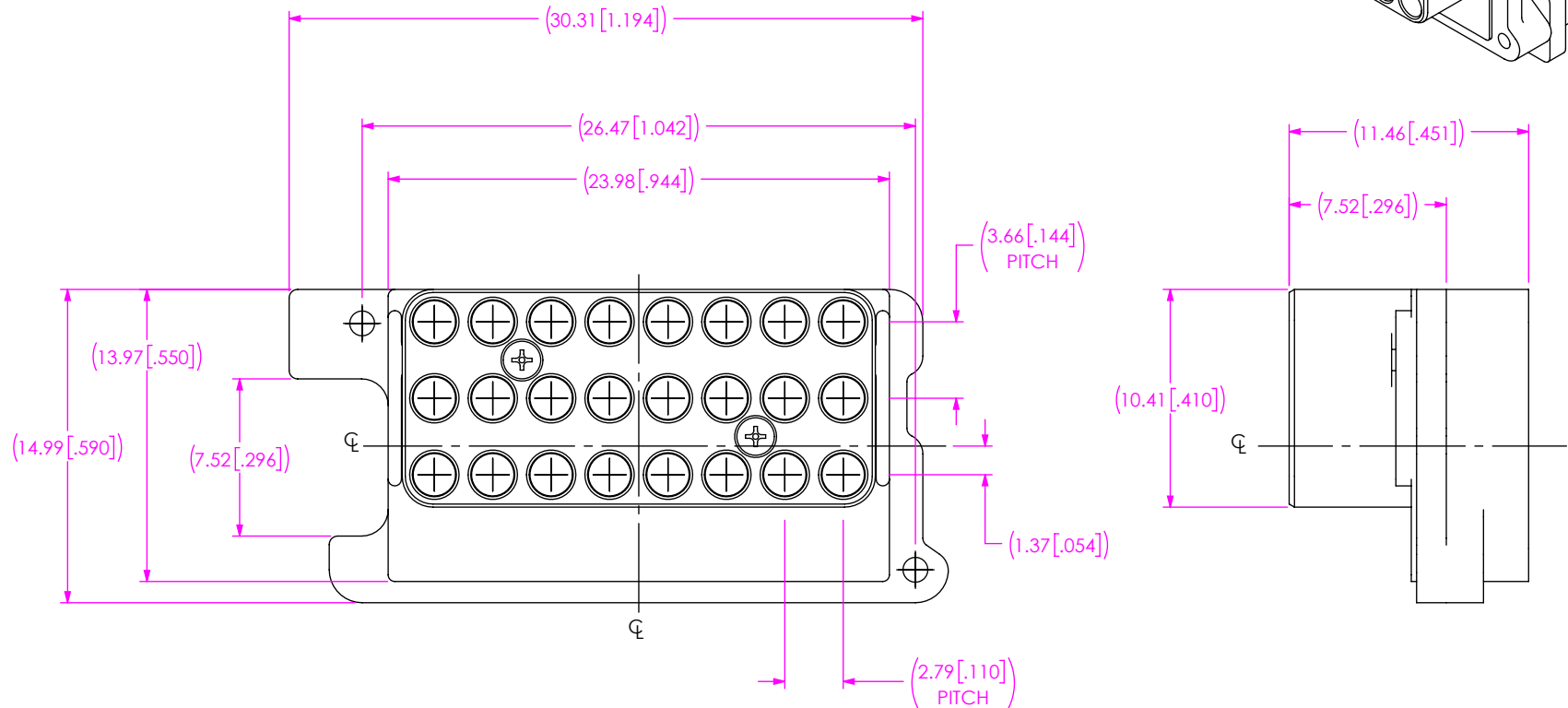
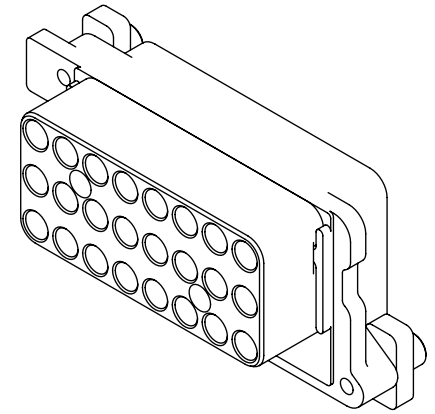


**DESIGNED & DIMENSIONED
IN MILLIMETERS [INCHES]**



NOTES:

- CUSTOM GPCC BACKPLANE BLOCK ASSEMBLY WITH 24 SIZE 20 RF PORTS.**
- MATERIAL:**
BLOCK BODIES: ALUMINUM
NUT, SCREW: STAINLESS STEEL
- FINISH:**
BLOCK BODIES: ALODINE COAT
NUT, SCREW: PASSIVATED

UNLESS OTHERWISE SPECIFIED,
DIMENSIONS ARE IN MILLIMETERS.
TOLERANCES ARE:
DECIMALS ANGLES
.XX: ± 0.30 2°
.XXX: ± 0.10

PROPRIETARY NOTE
THIS DOCUMENT CONTAINS CONFIDENTIAL AND
PROPRIETARY INFORMATION AND ALL DESIGN,
MANUFACTURING, REPRODUCTION, USE, PATENT RIGHTS
AND SALES RIGHTS ARE EXPRESSLY RESERVED BY SAMTEC,
INC. THIS DOCUMENT SHALL NOT BE DISCLOSED, IN WHOLE
OR PART, TO ANY UNAUTHORIZED PERSON OR ENTITY NOR
REPRODUCED, TRANSFERRED OR INCORPORATED IN ANY
OTHER PROJECT IN ANY MANNER WITHOUT THE EXPRESS
WRITTEN CONSENT OF SAMTEC, INC.



520 PARK EAST BLVD, NEW ALBANY, IN 47150
PHONE: 812-944-6733 FAX: 812-948-5047
e-Mail info@SAMTEC.com code 55322

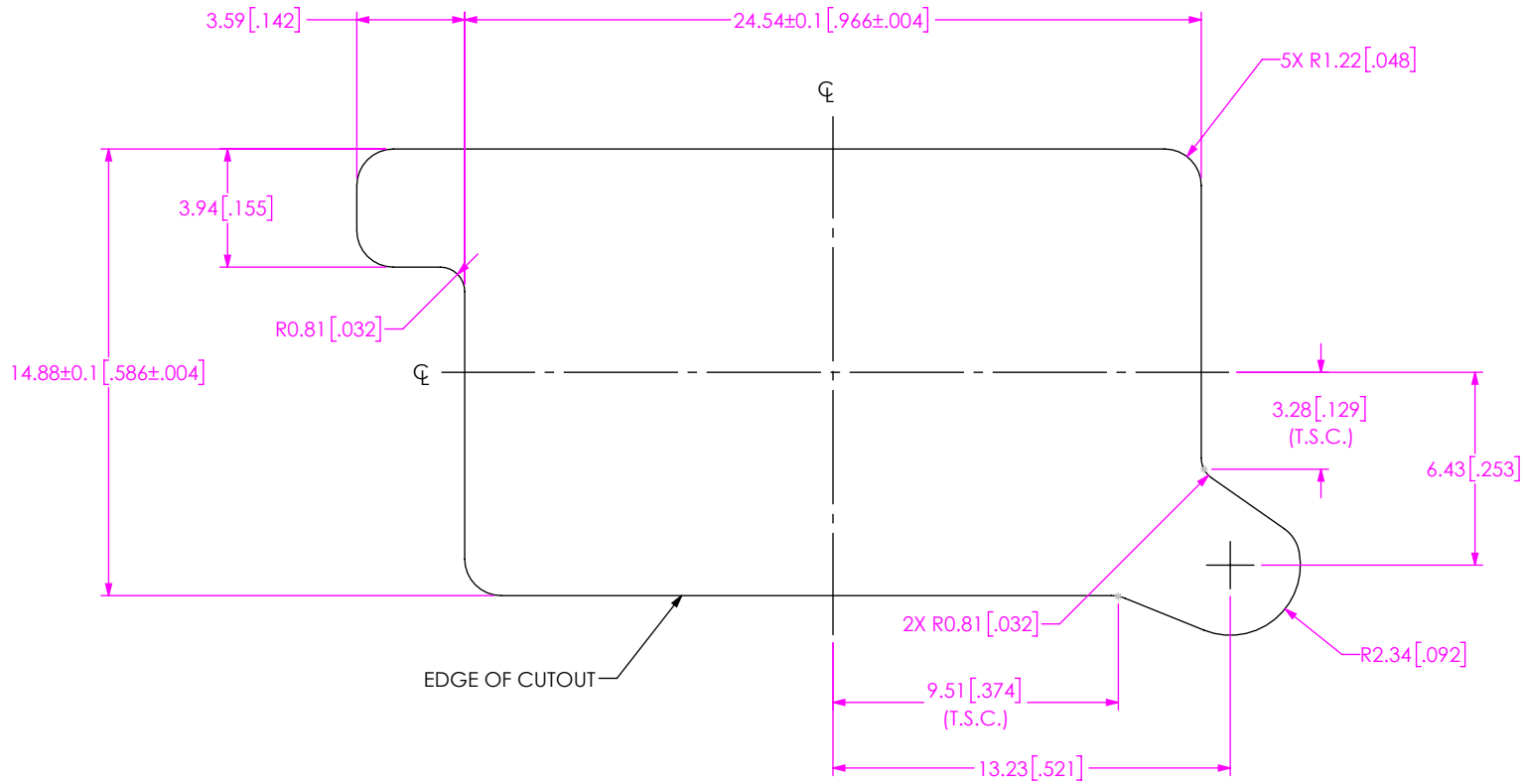
DO NOT SCALE DRAWING

SHEET SCALE: 3:1


DESCRIPTION:
GPCC, BACKPLANE, BLOCK ASSEMBLY

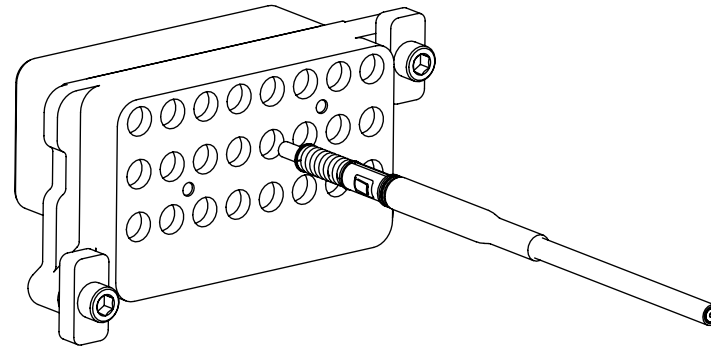
DWG. NO.
RSP-244880-01

BY: ROSS P 8/27/2025 SHEET 1 OF 4

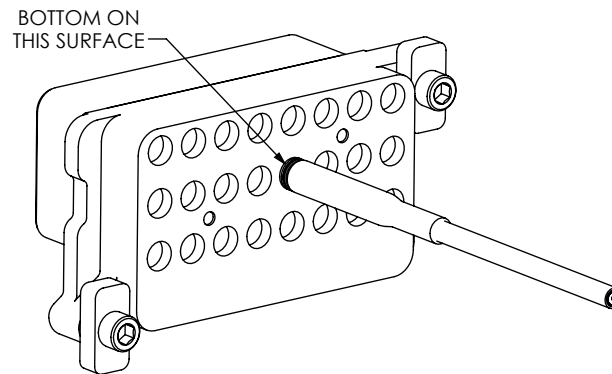


RECOMMENDED PANEL CUTOUT

<p>PROPRIETARY NOTE</p> <p>THIS DOCUMENT CONTAINS CONFIDENTIAL AND PROPRIETARY INFORMATION AND ALL DESIGN, MANUFACTURING, REPRODUCTION, USE, PATENT RIGHTS AND SALES RIGHTS ARE EXPRESSLY RESERVED BY SAMTEC, INC. THIS DOCUMENT SHALL NOT BE DISCLOSED, IN WHOLE OR PART, TO ANY UNAUTHORIZED PERSON OR ENTITY NOR REPRODUCED, TRANSFERRED OR INCORPORATED IN ANY OTHER PROJECT IN ANY MANNER WITHOUT THE EXPRESS WRITTEN CONSENT OF SAMTEC, INC.</p>			
	<p>520 PARK EAST BLVD., NEW ALBANY, IN 47150 PHONE: 812-944-6733 FAX: 812-948-5047 e-Mail info@SAMTEC.com code 55322</p>		
	<p>DO NOT SCALE DRAWING</p>	<p>DESCRIPTION: GPCC, BACKPLANE, BLOCK ASSEMBLY</p>	
<p>SHEET SCALE: 2:1</p>	<p>DWG. NO. RSP-244880-01</p>		
	<p>BY: ROSS P</p>	<p>8/27/2025</p>	<p>SHEET 2 OF 4</p>

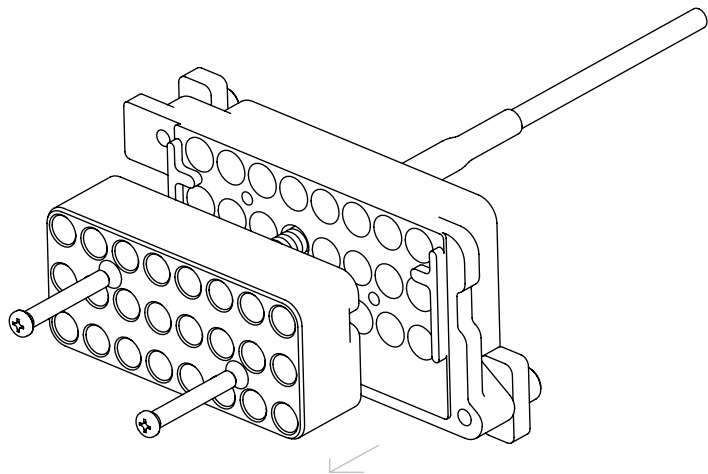


CONTACT INSERTION - STEP 1
ALIGN FEMALE (PIN) CONTACT WITH REAR RF PORT

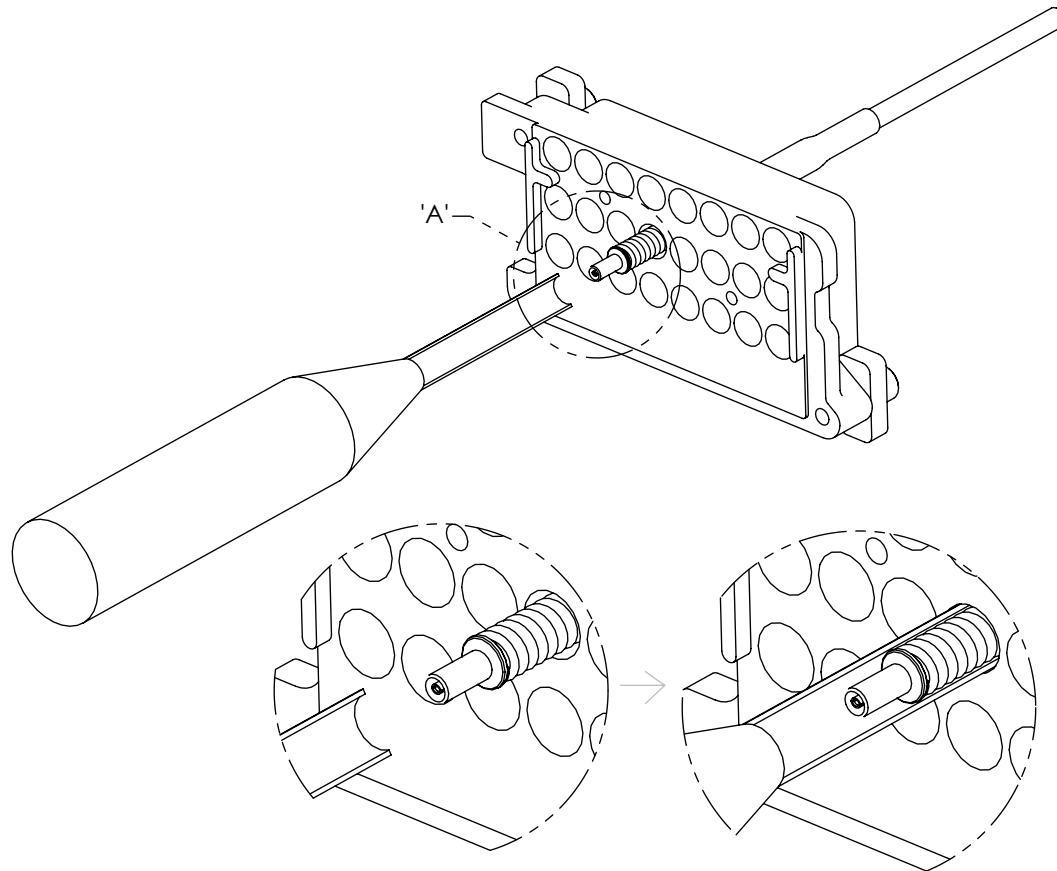


CONTACT INSERTION - STEP 2
INSERT CONTACT UNTIL BOTTOMED
ON BACK SURFACE

<p>PROPRIETARY NOTE THIS DOCUMENT CONTAINS CONFIDENTIAL AND PROPRIETARY INFORMATION AND ALL DESIGN, MANUFACTURING, REPRODUCTION, USE, PATENT RIGHTS AND SALES RIGHTS ARE EXPRESSLY RESERVED BY SAMTEC, INC. THIS DOCUMENT SHALL NOT BE DISCLOSED, IN WHOLE OR PART, TO ANY UNAUTHORIZED PERSON OR ENTITY NOR REPRODUCED, TRANSFERRED OR INCORPORATED IN ANY OTHER PROJECT IN ANY MANNER WITHOUT THE EXPRESS WRITTEN CONSENT OF SAMTEC, INC.</p>	<p>samtec 520 PARK EAST BLVD, NEW ALBANY, IN 47150 PHONE: 812-944-6733 FAX: 812-948-5047 e-Mail info@SAMTEC.com code 55322</p>
<p>DO NOT SCALE DRAWING</p>	<p>DESCRIPTION: GPCC, BACKPLANE, BLOCK ASSEMBLY</p>
<p>SHEET SCALE: 1:1</p>	<p>DWG. NO. RSP-244880-01</p>
<p></p>	<p>BY: ROSS P 8/27/2025 SHEET 3 OF 4</p>

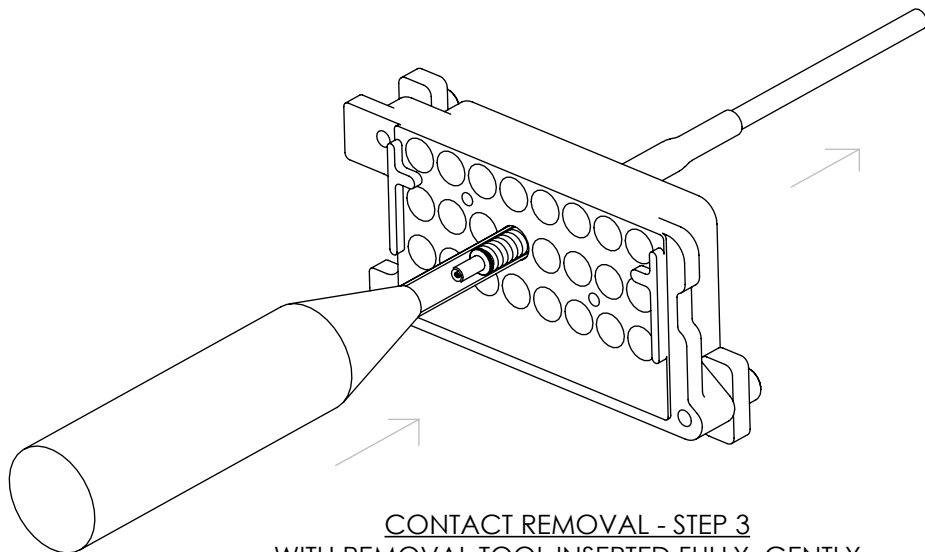


CONTACT REMOVAL - STEP 1
 REMOVE FRONT PLATE AND SCREWS
 USING PH000 DRIVER.



DETAIL 'A'
 SCALE 4 : 1

CONTACT REMOVAL - STEP 2
 INSERT REMOVAL TOOL IN GAP BETWEEN
 CONTACT AND HOUSING. INSERT UNTIL BOTTOMED.



CONTACT REMOVAL - STEP 3
 WITH REMOVAL TOOL INSERTED FULLY, GENTLY
 PULL ON CONTACT CABLE UNTIL REMOVED.

(IF CONTACT DOES NOT WITHDRAW, REMOVE TOOL,
 ROTATE TOOL SLIGHTLY, AND TRY AGAIN)

<p>PROPRIETARY NOTE</p> <p>THIS DOCUMENT CONTAINS CONFIDENTIAL AND PROPRIETARY INFORMATION AND ALL DESIGN, MANUFACTURING, REPRODUCTION, USE, PATENT RIGHTS AND SALES RIGHTS ARE EXPRESSLY RESERVED BY SAMTEC, INC. THIS DOCUMENT SHALL NOT BE DISCLOSED, IN WHOLE OR PART, TO ANY UNAUTHORIZED PERSON OR ENTITY NOR REPRODUCED, TRANSFERRED OR INCORPORATED IN ANY OTHER PROJECT IN ANY MANNER WITHOUT THE EXPRESS WRITTEN CONSENT OF SAMTEC, INC.</p>	<p>samtec</p> <p>520 PARK EAST BLVD, NEW ALBANY, IN 47150 PHONE: 812-944-6733 FAX: 812-948-5047 e-Mail info@SAMTEC.com code 55322</p>	
	<p>DO NOT SCALE DRAWING</p>	<p>DESCRIPTION: GPCC, BACKPLANE, BLOCK ASSEMBLY</p>
	<p>SHEET SCALE: 1:1</p>	<p>DWG. NO. RSP-244880-01</p> <p>BY: ROSS P 8/27/2025 SHEET 4 OF 4</p>