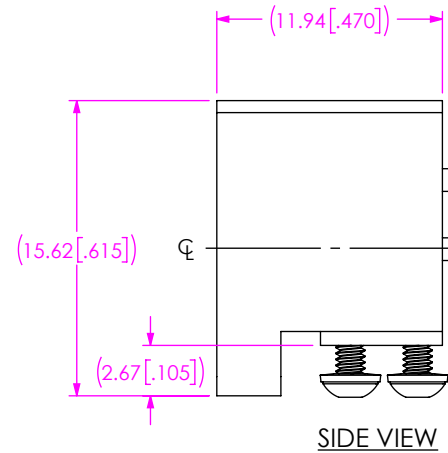
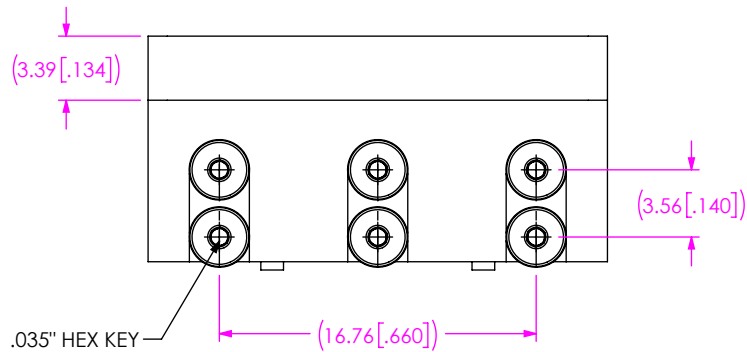
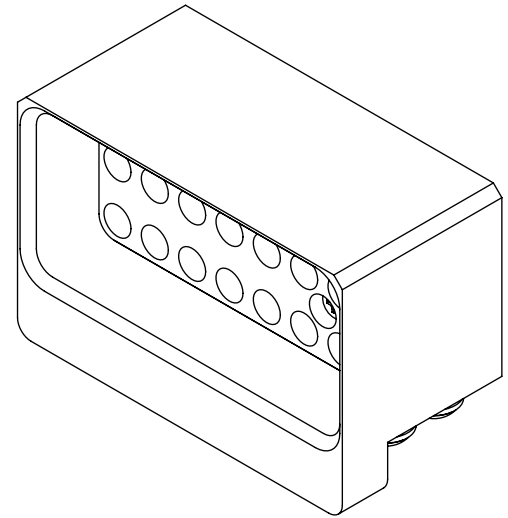
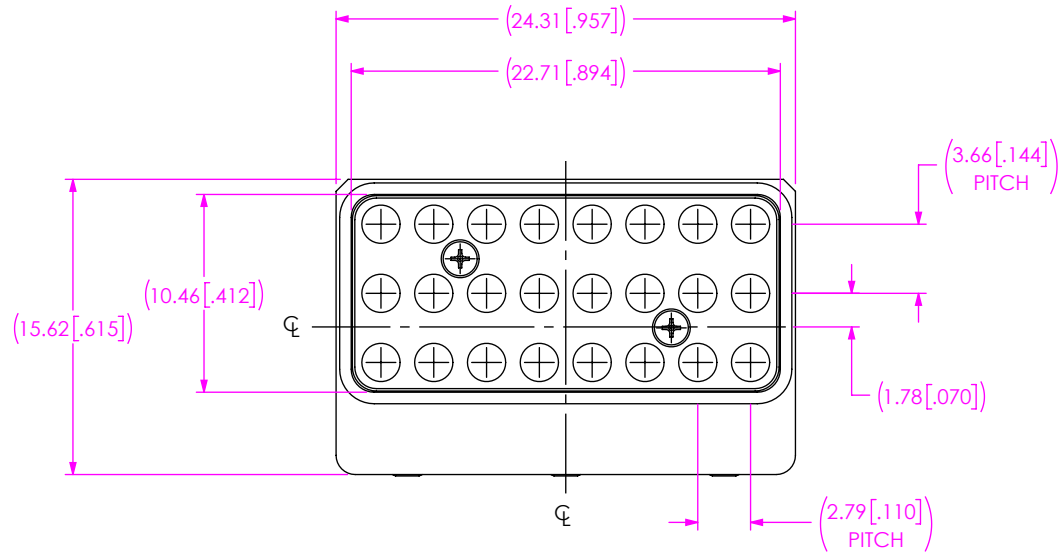


DESIGNED AND DIMENSIONED IN MILLIMETERS[INCHES]  
ALL DIMENSIONS REFERENCE EXCEPT AS SHOWN



NOTES:

1. CUSTOM GPCC EDGE CARD BLOCK ASSEMBLY WITH 24 SIZE 20 RF PORTS.
2. MATERIAL:  
BLOCK BODIES: ALUMINUM  
SCREW, WASHER: STAINLESS STEEL
3. FINISH:  
BLOCK BODIES: ALODINE COAT  
SCREW, WASHER: PASSIVATED

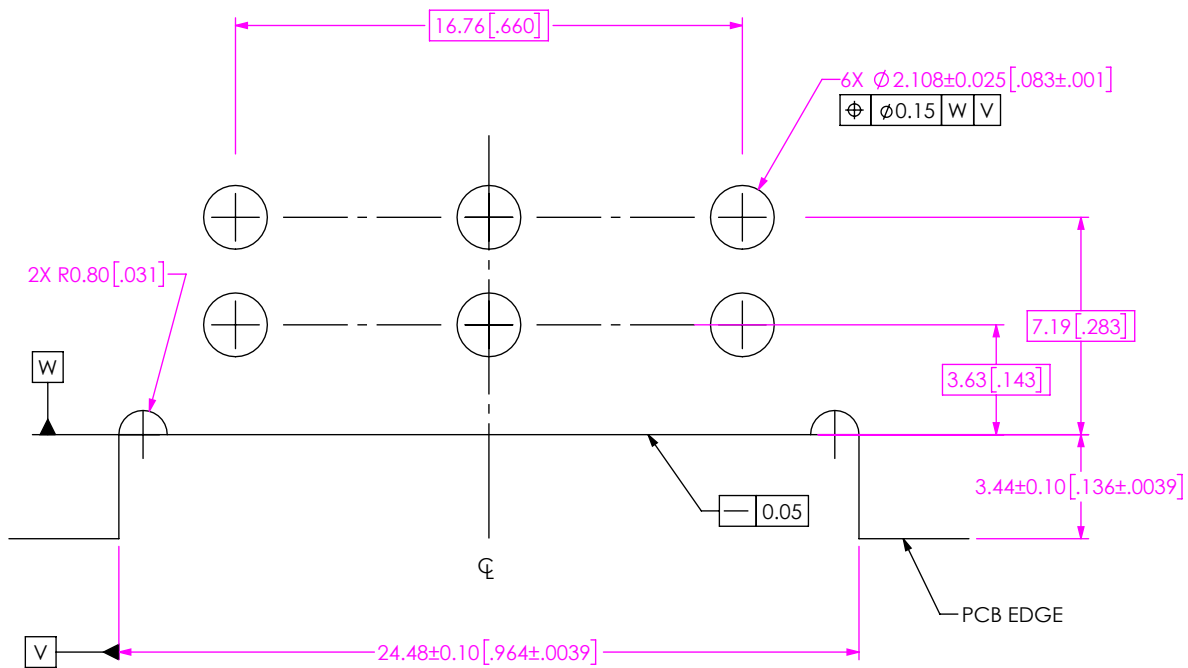
**PROPRIETARY NOTE**  
 THIS DOCUMENT CONTAINS CONFIDENTIAL AND PROPRIETARY INFORMATION AND ALL DESIGN, MANUFACTURING, REPRODUCTION, USE, PATENT RIGHTS AND SALES RIGHTS ARE EXPRESSLY RESERVED BY SAMTEC, INC. THIS DOCUMENT SHALL NOT BE DISCLOSED, IN WHOLE OR PART, TO ANY UNAUTHORIZED PERSON OR ENTITY NOR REPRODUCED, TRANSFERRED OR INCORPORATED IN ANY OTHER PROJECT IN ANY MANNER WITHOUT THE EXPRESS WRITTEN CONSENT OF SAMTEC, INC.

**samtec**  
 520 PARK EAST BLVD, NEW ALBANY, IN 47150  
 PHONE: 812-944-6733 FAX: 812-948-5047  
 e-Mail info@SAMTEC.com code 55322

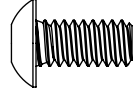
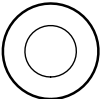
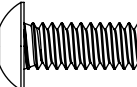
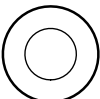

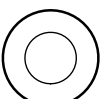
DO NOT SCALE DRAWING  
 SHEET SCALE: 2.5:1

DESCRIPTION:  
 GPCC, BLOCK ASSEMBLY, EDGE CARD

DWG. NO.  
 RSP-244881-01



RECOMMENDED FOOTPRINT

TABLE 1 - INCLUDED MOUNTING HARDWARE		
PCB THICKNESS	MOUNTING SCREW	LOCK WASHER
NOM: 1.57 [.062]  RANGE: 1.32 - 1.96 [.052 - .077]		
	3.18 [.125] SCREW	Ø3.18 [.125] WASHER
NOM: 2.36 [.093]  RANGE: 2.11 - 2.87 [.083 - .113]		
	3.97 [.1563] SCREW	Ø3.18 [.125] WASHER
NOM: 3.30 [.130]  RANGE: 2.92 - 3.56 [.115 - .140]		
	4.76 [.1875] SCREW	Ø3.18 [.125] WASHER

**PROPRIETARY NOTE**  
 THIS DOCUMENT CONTAINS CONFIDENTIAL AND PROPRIETARY INFORMATION AND ALL DESIGN, MANUFACTURING, REPRODUCTION, USE, PATENT RIGHTS AND SALES RIGHTS ARE EXPRESSLY RESERVED BY SAMTEC, INC. THIS DOCUMENT SHALL NOT BE DISCLOSED, IN WHOLE OR PART, TO ANY UNAUTHORIZED PERSON OR ENTITY NOR REPRODUCED, TRANSFERRED OR INCORPORATED IN ANY OTHER PROJECT IN ANY MANNER WITHOUT THE EXPRESS WRITTEN CONSENT OF SAMTEC, INC.



520 PARK EAST BLVD, NEW ALBANY, IN 47150  
 PHONE: 812-944-6733 FAX: 812-948-5047  
 e-Mail info@SAMTEC.com code 55322

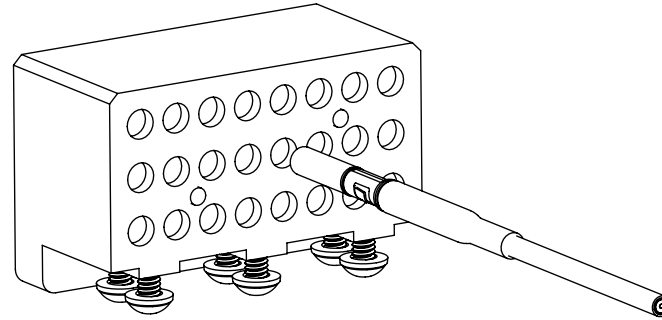
DO NOT SCALE DRAWING

SHEET SCALE: 4:1

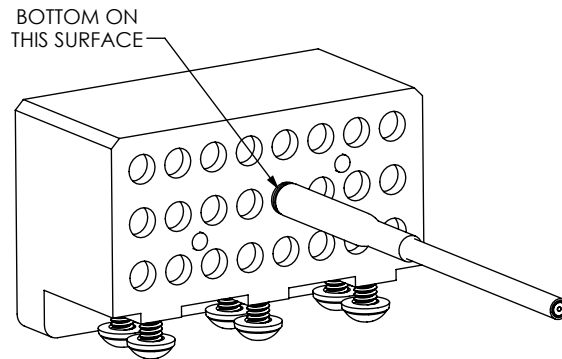
DESCRIPTION:  
 GPCC, BLOCK ASSEMBLY, EDGE CARD

DWG. NO.  
**RSP-244881-01**


BY: ROSS P 8/27/2025 SHEET 2 OF 4

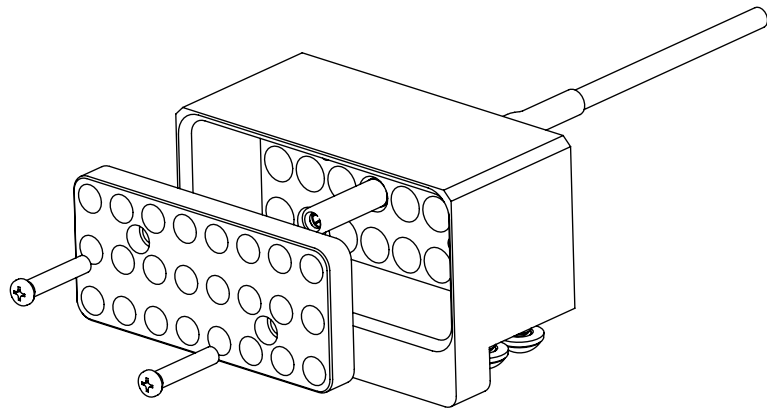


**CONTACT INSERTION - STEP 1**  
ALIGN MALE (SOCKET) CONTACT WITH REAR RF PORT

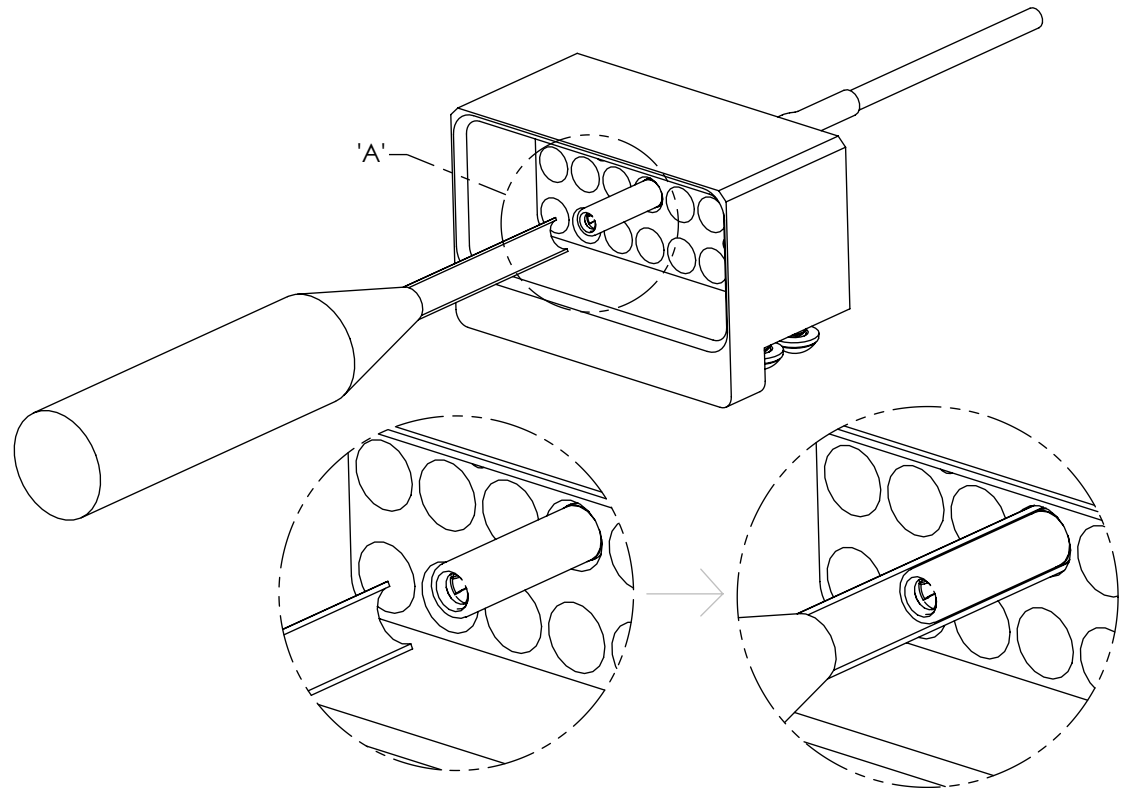


**CONTACT INSERTION - STEP 2**  
INSERT CONTACT UNTIL BOTTOMED  
ON BACK SURFACE

<p><b>PROPRIETARY NOTE</b></p> <p>THIS DOCUMENT CONTAINS CONFIDENTIAL AND PROPRIETARY INFORMATION AND ALL DESIGN, MANUFACTURING, REPRODUCTION, USE, PATENT RIGHTS AND SALES RIGHTS ARE EXPRESSLY RESERVED BY SAMTEC, INC. THIS DOCUMENT SHALL NOT BE DISCLOSED, IN WHOLE OR PART, TO ANY UNAUTHORIZED PERSON OR ENTITY NOR REPRODUCED, TRANSFERRED OR INCORPORATED IN ANY OTHER PROJECT IN ANY MANNER WITHOUT THE EXPRESS WRITTEN CONSENT OF SAMTEC, INC.</p>	 <p>520 PARK EAST BLVD., NEW ALBANY, IN 47150 PHONE: 812-944-6733 FAX: 812-948-5047 e-Mail info@SAMTEC.com code 55322</p>
<p>DO NOT SCALE DRAWING</p>	<p>DESCRIPTION: GPCC, BLOCK ASSEMBLY, EDGE CARD</p>
<p>SHEET SCALE: 1:1</p>	<p>DWG. NO. <b>RSP-244881-01</b></p> <p>BY: ROSS P 8/27/2025 SHEET 3 OF 4</p>

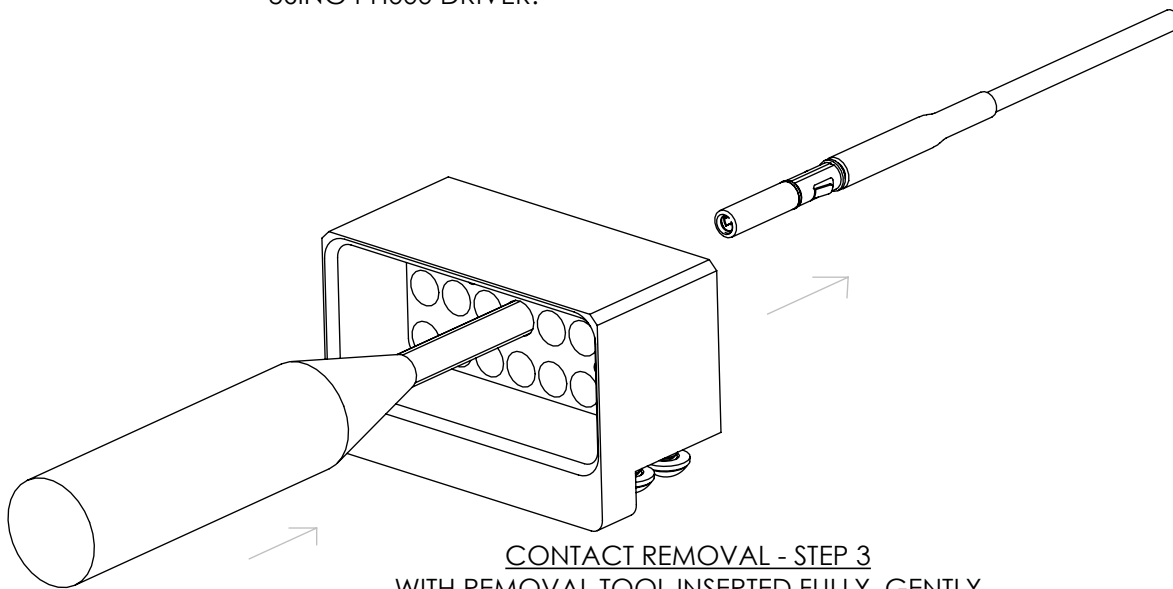


**CONTACT REMOVAL - STEP 1**  
 REMOVE FRONT PLATE AND SCREWS  
 USING PH000 DRIVER.




**DETAIL 'A'**  
 SCALE 4 : 1

**CONTACT REMOVAL - STEP 2**  
 INSERT REMOVAL TOOL IN GAP BETWEEN  
 CONTACT AND HOUSING. INSERT UNTIL BOTTOMED.



**CONTACT REMOVAL - STEP 3**  
 WITH REMOVAL TOOL INSERTED FULLY, GENTLY  
 PULL ON CONTACT CABLE UNTIL REMOVED.

(IF CONTACT DOES NOT WITHDRAW, REMOVE TOOL,  
 ROTATE TOOL SLIGHTLY, AND TRY AGAIN)

<p><b>PROPRIETARY NOTE</b></p> <p>THIS DOCUMENT CONTAINS CONFIDENTIAL AND PROPRIETARY INFORMATION AND ALL DESIGN, MANUFACTURING, REPRODUCTION, USE, PATENT RIGHTS AND SALES RIGHTS ARE EXPRESSLY RESERVED BY SAMTEC, INC. THIS DOCUMENT SHALL NOT BE DISCLOSED, IN WHOLE OR PART, TO ANY UNAUTHORIZED PERSON OR ENTITY NOR REPRODUCED, TRANSFERRED OR INCORPORATED IN ANY OTHER PROJECT IN ANY MANNER WITHOUT THE EXPRESS WRITTEN CONSENT OF SAMTEC, INC.</p>		
	<p>520 PARK EAST BLVD, NEW ALBANY, IN 47150                  PHONE: 812-944-6733 FAX: 812-948-5047                  e-Mail info@SAMTEC.com code 55322</p>	
	<p>DO NOT SCALE DRAWING</p>	<p>DESCRIPTION: GPCC, BLOCK ASSEMBLY, EDGE CARD</p>
<p>SHEET SCALE: 1:2</p>	<p>DWG. NO. <b>RSP-244881-01</b></p>	<p>BY: ROSS P 8/27/2025 SHEET 4 OF 4</p>