

DO NOT  
SCALE FROM  
THIS PRINT

DESIGNED & DIMENSIONED  
IN INCHES[MILLIMETERS]

FIGURE 1  
SEAF MATED WITH SEAM

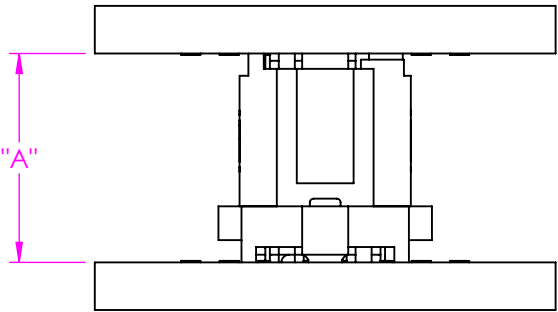


TABLE 1											
		SEAF LEAD STYLE								WIPE	
		-05.0		-06.0		-06.5		-07.5			
		"A" FULLY MATED	"A" MAX	"A" FULLY MATED	"A" MAX	"A" FULLY MATED	"A" MAX	"A" FULLY MATED	"A" MAX	FULLY MATED	MIN @ "A" MAX
SEAM LEAD STYLE	-02.0	.276 [7.00]	.305 [7.74]	.315 [8.00]	.344 [8.74]	.335 [8.50]	.364 [9.24]	.374 [9.50]	.403 [10.24]	.044 [1.12]	.015 [0.38]
	-03.0	.315 [8.00]	.344 [8.74]	.354 [9.00]	.383 [9.74]	.374 [9.50]	.403 [10.24]	.413 [10.50]	.442 [11.24]	.044 [1.12]	.015 [0.38]
	-03.5	.335 [8.50]	.364 [9.24]	.374 [9.50]	.403 [10.24]	.394 [10.00]	.423 [10.74]	.433 [11.00]	.462 [11.74]	.044 [1.12]	.015 [0.38]
	-06.5	.453 [11.50]	.482 [12.24]	.492 [12.50]	.521 [13.24]	.512 [13.00]	.541 [13.74]	.551 [14.00]	.580 [14.74]	.044 [1.12]	.015 [0.38]
	-07.0	.472 [12.00]	.501 [12.74]	.512 [13.00]	.541 [13.74]	.532 [13.50]	.561 [14.24]	.571 [14.50]	.600 [15.24]	.044 [1.12]	.015 [0.38]
	-09.0	.551 [14.00]	.580 [14.74]	.591 [15.00]	.620 [15.74]	.610 [15.50]	.639 [16.24]	.650 [16.50]	.679 [17.24]	.044 [1.12]	.015 [0.38]
	-11.0	.630 [16.00]	.659 [16.74]	.669 [17.00]	.698 [17.74]	.689 [17.50]	.718 [18.24]	.728 [18.50]	.757 [19.24]	.044 [1.12]	.015 [0.38]
	*-13.0	.709 [18.00]	.738 [18.74]	.748 [19.00]	.777 [19.74]	.768 [19.50]	.797 [20.24]	.807 [20.50]	.836 [21.24]	.044 [1.12]	.015 [0.38]
* = NOT TOOLED											

NOTES:  
1. ALL DIMENSIONS BASED ON NOMINAL VALUES FOR SAMTEC RECOMMENDED PCB LAYOUTS.  
2. ALTHOUGH MAX DIMENSIONS ARE LISTED SAMTEC RECOMMENDS FULLY MATING COMPONENTS.

• PROPRIETARY NOTE •  
THIS DOCUMENT CONTAINS CONFIDENTIAL AND PROPRIETARY INFORMATION AND ALL DESIGN, MANUFACTURING, REPRODUCTION, USE, PATENT RIGHTS AND SALES RIGHTS ARE EXPRESSLY RESERVED BY SAMTEC, INC. THIS DOCUMENT SHALL NOT BE DISCLOSED, IN WHOLE OR PART, TO ANY UNAUTHORIZED PERSON OR ENTITY NOR REPRODUCED, TRANSFERRED OR INCORPORATED IN ANY OTHER PROJECT IN ANY MANNER WITHOUT THE EXPRESS WRITTEN CONSENT OF SAMTEC, INC.



520 PARK EAST BLVD, NEW ALBANY, IN 47150  
PHONE: 812-944-6733 FAX: 812-948-5047  
e-Mail info@SAMTEC.com code 55322

**FIGURE 2**  
SEAF MATED WITH SEAM-RA

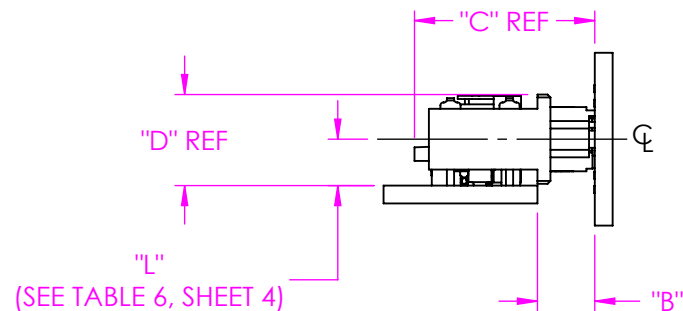


TABLE 2											
SEAF LEAD STYLE										WIPE	
		-05.0		-06.0		-06.5		-07.5			
		"B" FULLY MATED	"B" MAX	"B" FULLY MATED	"B" MAX	"B" FULLY MATED	"B" MAX	"B" FULLY MATED	"B" MAX	FULLY MATED	MIN @ "B" MAX
SEAM-RA No OF ROWS	-04	.199 [5.05]	.228 [5.79]	.238 [6.05]	.267 [6.79]	.258 [6.55]	.287 [7.29]	.297 [7.55]	.326 [1.12]	.044 [1.12]	.015 [0.38]
	-06	.199 [5.05]	.228 [5.79]	.238 [6.05]	.267 [6.79]	.258 [6.55]	.287 [7.29]	.297 [7.55]	.326 [8.29]	.044 [1.12]	.015 [0.38]
	-08	.199 [5.05]	.228 [5.79]	.238 [6.05]	.267 [6.79]	.258 [6.55]	.287 [7.29]	.297 [7.55]	.326 [8.29]	.044 [1.12]	.015 [0.38]
	-10	.199 [5.05]	.228 [5.79]	.238 [6.05]	.267 [6.79]	.258 [6.55]	.287 [7.29]	.297 [7.55]	.326 [8.29]	.044 [1.12]	.015 [0.38]

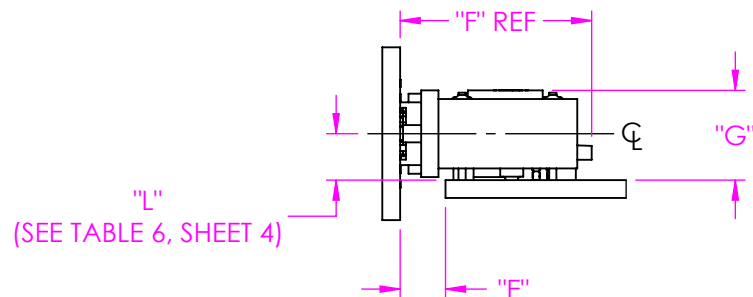
TABLE 3										
SEAF LEAD STYLE										
		-05.0		-06.0		-06.5		-07.5		
		"C" FULLY MATED	"C" MAX	"C" FULLY MATED	"C" MAX	"C" FULLY MATED	"C" MAX	"C" FULLY MATED	"C" MAX	"D"
SEAM-RA No OF ROWS	-04	.626 [15.90]	.655 [16.64]	.665 [16.90]	.694 [17.64]	.685 [17.40]	.714 [18.14]	.724 [18.40]	.753 [19.14]	.316 [8.03]
	-06	.758 [19.25]	.787 [19.99]	.797 [20.25]	.826 [20.99]	.817 [20.75]	.846 [21.49]	.856 [21.75]	.885 [22.49]	.416 [10.57]
	-08	.858 [21.79]	.887 [22.53]	.897 [22.79]	.926 [23.53]	.917 [23.29]	.946 [24.03]	.956 [24.29]	.985 [25.03]	.516 [13.11]
	-10	.958 [24.33]	.987 [25.07]	.997 [25.33]	1.026 [26.07]	1.017 [25.83]	1.046 [26.57]	1.056 [26.83]	1.085 [27.57]	.616 [15.65]

\* PROPRIETARY NOTE \*  
 THIS DOCUMENT CONTAINS CONFIDENTIAL AND  
 PROPRIETARY INFORMATION AND ALL DESIGN,  
 MANUFACTURING, REPRODUCTION, USE, PATENT RIGHTS  
 AND SALES RIGHTS ARE EXPRESSLY RESERVED BY SAMTEC,  
 INC. THIS DOCUMENT SHALL NOT BE DISCLOSED, IN WHOLE  
 OR PART, TO ANY UNAUTHORIZED PERSON OR ENTITY NOR  
 REPRODUCED, TRANSFERRED OR INCORPORATED IN ANY  
 OTHER PROJECT IN ANY MANNER WITHOUT THE EXPRESS  
 WRITTEN CONSENT OF SAMTEC, INC.

**samtec**

520 PARK EAST BLVD, NEW ALBANY, IN 47150  
 PHONE: 812-944-6733 FAX: 812-948-5047  
 e-Mail info@SAMTEC.com code 55322

**FIGURE 3**  
SEAM MATED WITH SEAF-RA

**TABLE 4****SEAMLEAD STYLE**

		SEAMLEAD STYLE														WIPE	
		-02.0		-03.0		-03.5		-06.5		-07.0		-09.0		-11.0			
		"E" FULLY MATED	"E" MAX	"E" FULLY MATED	"E" MAX	"E" FULLY MATED	"E" MAX	"E" FULLY MATED	"E" MAX	"E" FULLY MATED	"E" MAX	"E" FULLY MATED	"E" MAX	"E" FULLY MATED	"E" MAX	FULLY MATED	MIN @ "E" MAX
SEAF- RA No OF ROWS	-04	.158 [4.01]	.187 [4.75]	.197 [5.01]	.226 [5.75]	.217 [5.51]	.246 [6.25]	.337 [8.56]	.366 [9.30]	.355 [9.01]	.384 [9.75]	.434 [11.01]	.463 [11.75]	.513 [13.03]	.542 [13.77]	.044 [1.12]	.015 [0.38]
	-06	.158 [4.01]	.187 [4.75]	.197 [5.01]	.226 [5.75]	.217 [5.51]	.246 [6.25]	.337 [8.56]	.366 [9.30]	.355 [9.01]	.384 [9.75]	.434 [11.01]	.463 [11.75]	.513 [13.03]	.542 [13.77]	.044 [1.12]	.015 [0.38]
	-08	.158 [4.01]	.187 [4.75]	.197 [5.01]	.226 [5.75]	.217 [5.51]	.246 [6.25]	.337 [8.56]	.366 [9.30]	.355 [9.01]	.384 [9.75]	.434 [11.01]	.463 [11.75]	.513 [13.03]	.542 [13.77]	.044 [1.12]	.015 [0.38]
	-10	.158 [4.01]	.187 [4.75]	.197 [5.01]	.226 [5.75]	.217 [5.51]	.246 [6.25]	.337 [8.56]	.366 [9.30]	.355 [9.01]	.384 [9.75]	.434 [11.01]	.463 [11.75]	.513 [13.03]	.542 [13.77]	.044 [1.12]	.015 [0.38]

**TABLE 5****SEAMLEAD STYLE**

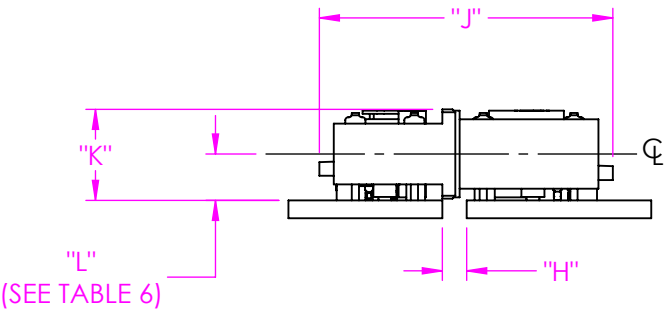
		-02.0		-03.0		-03.5		-06.5		-07.0		-09.0		-11.0		"G"
		"F" FULLY MATED	"F" MAX	"F" FULLY MATED	"F" MAX	"F" FULLY MATED	"F" MAX	"F" FULLY MATED	"F" MAX	"F" FULLY MATED	"F" MAX	"F" FULLY MATED	"F" MAX	"F" FULLY MATED	"F" MAX	
SEAF-RA No Of ROWS	-04	.665 [16.89]	.694 [17.63]	.704 [17.89]	.733 [18.63]	.724 [18.39]	.753 [19.13]	.845 [21.46]	.874 [22.20]	.863 [21.92]	.892 [22.66]	.942 [23.93]	.971 [24.67]	1.021 [25.94]	1.050 [26.68]	.312 [7.92]
	-06	.777 [19.74]	.806 [20.47]	.816 [20.74]	.845 [21.47]	.836 [21.24]	.865 [21.97]	.956 [24.28]	.985 [25.02]	.975 [24.77]	1.004 [25.50]	1.054 [26.78]	1.083 [27.51]	1.133 [28.79]	1.162 [29.52]	.412 [10.46]
	-08	.877 [22.28]	.906 [23.01]	.916 [23.28]	.945 [24.01]	.936 [23.78]	.965 [24.51]	1.056 [26.82]	1.085 [27.56]	1.075 [27.31]	1.104 [28.04]	1.154 [29.32]	1.183 [30.05]	1.233 [31.33]	1.262 [32.06]	.512 [13.00]
	-10	.977 [24.82]	1.006 [25.55]	1.016 [25.82]	1.045 [26.55]	1.036 [26.32]	1.065 [27.05]	1.156 [29.36]	1.185 [30.10]	1.175 [29.85]	1.204 [30.58]	1.254 [31.86]	1.283 [32.59]	1.333 [33.87]	1.362 [34.60]	.612 [15.54]

• **PROPRIETARY NOTE** •  
THIS DOCUMENT CONTAINS CONFIDENTIAL AND PROPRIETARY INFORMATION AND ALL DESIGN, MANUFACTURING, REPRODUCTION, USE, PATENT RIGHTS AND SALES RIGHTS ARE EXPRESSLY RESERVED BY SAMTEC, INC. THIS DOCUMENT SHALL NOT BE DISCLOSED, IN WHOLE OR PART, TO ANY UNAUTHORIZED PERSON OR ENTITY NOR REPRODUCED, TRANSFERRED OR INCORPORATED IN ANY OTHER PROJECT IN ANY MANNER WITHOUT THE EXPRESS WRITTEN CONSENT OF SAMTEC, INC.

**samtec**

520 PARK EAST BLVD, NEW ALBANY, IN 47150  
PHONE: 812-944-6733 FAX: 812-948-5047  
e-Mail info@SAMTEC.com code 55322

**FIGURE 4**  
SEAF-RA -04 ROW MATED WITH SEAM-RA -04 ROW



**FIGURE 5**  
SEAF-RA -06 ROW MATED WITH SEAM-RA -06 ROW  
(SAME AS -04 ROW EXCEPT AS SHOWN)

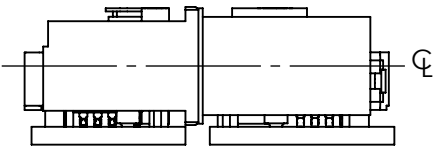


TABLE 6																	
		SEAF-RA										WIPE					
		"H" FULLY MATED		"H" MAX		"J" FULLY MATED		"J" MAX		"K"		"L"		FULLY MATED		MIN @ "H" MAX	
SEAM-RA No OF ROWS	-04	.085	[2.16]	.114	[2.90]	1.019	[25.88]	1.048	[26.62]	.316	[8.03]	.161	[4.09]	.044	[1.12]	.015	[0.38]
	-06	.085	[2.16]	.114	[2.90]	1.262	[32.05]	1.291	[32.79]	.416	[10.57]	.211	[5.36]	.044	[1.12]	.015	[0.38]
	-08	.085	[2.16]	.114	[2.90]	1.462	[37.13]	1.491	[37.87]	.516	[13.11]	.261	[6.63]	.044	[1.12]	.015	[0.38]
	-10	.085	[2.16]	.114	[2.90]	1.662	[42.21]	1.691	[42.95]	.616	[15.65]	.311	[7.90]	.044	[1.12]	.015	[0.38]

• PROPRIETARY NOTE •  
THIS DOCUMENT CONTAINS CONFIDENTIAL AND PROPRIETARY INFORMATION AND ALL DESIGN, MANUFACTURING, REPRODUCTION, USE, PATENT RIGHTS AND SALES RIGHTS ARE EXPRESSLY RESERVED BY SAMTEC, INC. THIS DOCUMENT SHALL NOT BE DISCLOSED, IN WHOLE OR PART, TO ANY UNAUTHORIZED PERSON OR ENTITY NOR REPRODUCED, TRANSFERRED OR INCORPORATED IN ANY OTHER PROJECT IN ANY MANNER WITHOUT THE EXPRESS WRITTEN CONSENT OF SAMTEC, INC.



520 PARK EAST BLVD, NEW ALBANY, IN 47150  
PHONE: 812-944-6733 FAX: 812-948-5047  
e-Mail info@SAMTEC.com code 55322  
SHEET 4 OF 9

**FIGURE 6**  
SEAF/SEAFC MATED WITH SEAR

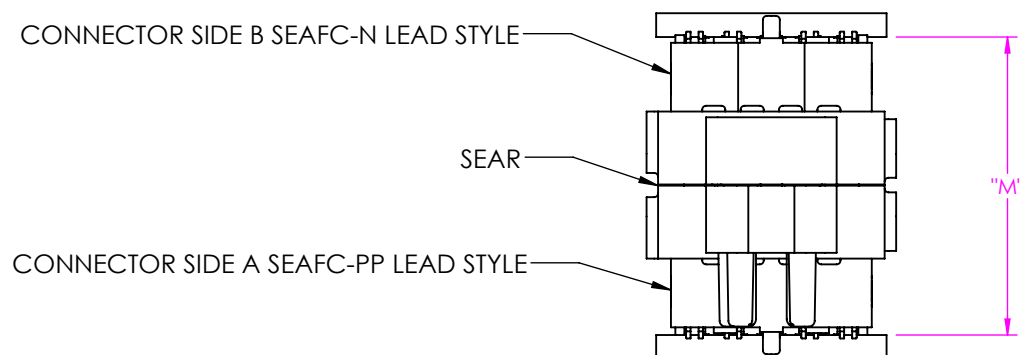


TABLE 7					
		SEAF/SEAFC LEAD STYLE		WIPE	
		-05.0			
		"M" FULLY MATED	"M" MAX	FULLY MATED	MIN @ "M" MAX
SEAR LEAD STYLE	-10.0	.787 [20.00]	.825 [20.97]	.053 [1.35]	.015 [0.38]
	-20.0	1.181 [30.00]	1.219 [30.97]	.053 [1.35]	.015 [0.38]
	-30.0	1.575 [40.00]	1.613 [40.97]	.053 [1.35]	.015 [0.38]
	-31.0	1.614 [41.00]	1.652 [41.97]	.053 [1.35]	.015 [0.38]

• PROPRIETARY NOTE •  
THIS DOCUMENT CONTAINS CONFIDENTIAL AND PROPRIETARY INFORMATION AND ALL DESIGN, MANUFACTURING, REPRODUCTION, USE, PATENT RIGHTS AND SALES RIGHTS ARE EXPRESSLY RESERVED BY SAMTEC, INC. THIS DOCUMENT SHALL NOT BE DISCLOSED, IN WHOLE OR PART, TO ANY UNAUTHORIZED PERSON OR ENTITY NOR REPRODUCED, TRANSFERRED OR INCORPORATED IN ANY OTHER PROJECT IN ANY MANNER WITHOUT THE EXPRESS WRITTEN CONSENT OF SAMTEC, INC.

**samtec**

520 PARK EAST BLVD, NEW ALBANY, IN 47150  
PHONE: 812-944-6733 FAX: 812-948-5047  
e-Mail info@SAMTEC.com code 55322

FIGURE 7  
SEAFc-DV MATED WITH SEAC

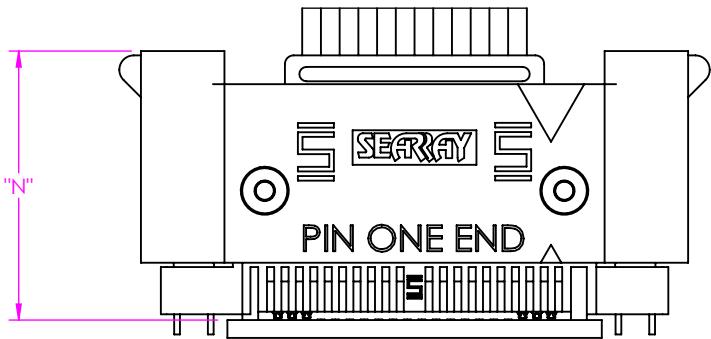


TABLE 8											
		SEAFC LEAD STYLE								WIPE	
		-05.0		-06.0		-06.5		-07.5			
		"N" FULLY MATED	"N" MAX	"N" FULLY MATED	"N" MAX	"N" FULLY MATED	"N" MAX	"N" FULLY MATED	"N" MAX		
SEAC LEAD STYLE	W/T Latch	.934 [23.72]	.950 [24.13]	.973 [24.72]	.989 [25.13]	.993 [25.22]	1.009 [25.63]	1.032 [26.22]	1.048 [26.63]	.043 [1.09]	.027 [0.69]
	W/O Latch	.819 [20.80]	.847 [21.51]	.858 [21.80]	.886 [22.51]	.878 [22.30]	.906 [23.01]	.917 [23.30]	.945 [24.01]	.043 [1.09]	.015 [0.38]

• PROPRIETARY NOTE •  
THIS DOCUMENT CONTAINS CONFIDENTIAL AND PROPRIETARY INFORMATION AND ALL DESIGN, MANUFACTURING, REPRODUCTION, USE, PATENT RIGHTS AND SALES RIGHTS ARE EXPRESSLY RESERVED BY SAMTEC, INC. THIS DOCUMENT SHALL NOT BE DISCLOSED, IN WHOLE OR PART, TO ANY UNAUTHORIZED PERSON OR ENTITY NOR REPRODUCED, TRANSFERRED OR INCORPORATED IN ANY OTHER PROJECT IN ANY MANNER WITHOUT THE EXPRESS WRITTEN CONSENT OF SAMTEC, INC.



520 PARK EAST BLVD, NEW ALBANY, IN 47150  
PHONE: 812-944-6733 FAX: 812-948-5047  
e-Mail info@SAMTEC.com code 55322

**FIGURE 8**  
SEAC MATED WITH SEAF-RA

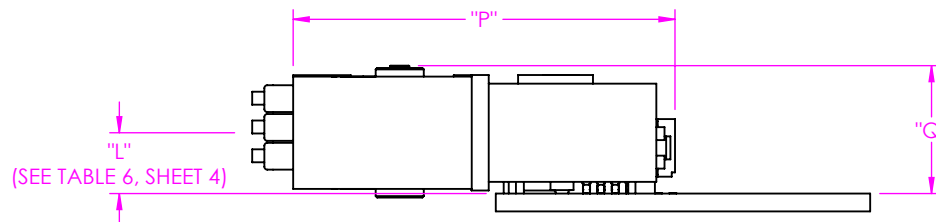


TABLE 9								
		SEAC LEAD STYLE				WIPE		
		W/T Latch		W/O Latch				
		"P" FULLY MATED	"P" MAX	"P" FULLY MATED	"P" MAX	FULLY MATED	MIN @ "P" MAX	
SEAF-RA No OF ROWS	-04	1.315 [33.40]	1.330 [33.78]	1.200 [30.48]	1.228 [31.19]	.043 [1.09]	.015 [0.38]	.336 [8.53]
	-06	1.427 [36.25]	1.442 [36.63]	1.312 [33.32]	1.340 [34.04]	.043 [1.09]	.015 [0.38]	.436 [11.07]
	-08	1.527 [38.79]	1.542 [39.17]	1.412 [35.86]	1.440 [36.58]	.043 [1.09]	.015 [0.38]	.536 [13.61]
	-10	1.627 [41.33]	1.642 [41.71]	1.512 [38.40]	1.540 [39.12]	.043 [1.09]	.015 [0.38]	.636 [16.15]

• **PROPRIETARY NOTE** •  
THIS DOCUMENT CONTAINS CONFIDENTIAL AND PROPRIETARY INFORMATION AND ALL DESIGN, MANUFACTURING, REPRODUCTION, USE, PATENT RIGHTS AND SALES RIGHTS ARE EXPRESSLY RESERVED BY SAMTEC, INC. THIS DOCUMENT SHALL NOT BE DISCLOSED, IN WHOLE OR PART, TO ANY UNAUTHORIZED PERSON OR ENTITY NOR REPRODUCED, TRANSFERRED OR INCORPORATED IN ANY OTHER PROJECT IN ANY MANNER WITHOUT THE EXPRESS WRITTEN CONSENT OF SAMTEC, INC.

**samtec**

520 PARK EAST BLVD, NEW ALBANY, IN 47150  
PHONE: 812-944-6733 FAX: 812-948-5047  
e-Mail info@SAMTEC.com code 55322

**FIGURE 9**  
SEAM MATED WITH SEAFP-RA

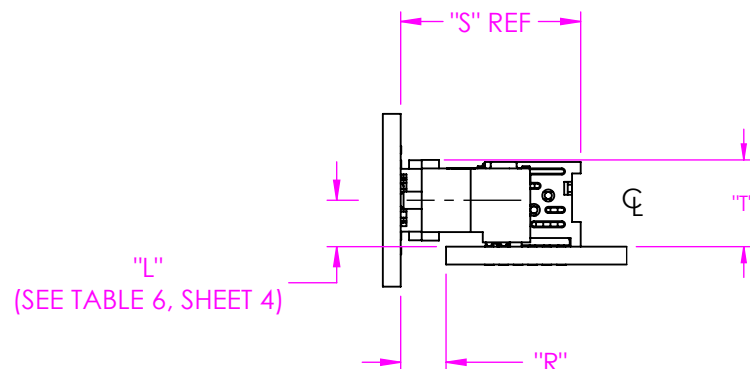


TABLE 10																	
		SEAM LEAD STYLE														WIPE	
		-02.0		-03.0		-03.5		-06.5		-07.0		-09.0		-11.0			
		"R" FULLY MATED	"R" MAX	"R" FULLY MATED	"R" MAX	"R" FULLY MATED	"R" MAX	"R" FULLY MATED	"R" MAX	"R" FULLY MATED	"R" MAX	"R" FULLY MATED	"R" MAX	"R" FULLY MATED	"R" MAX	FULLY MATED	MIN @ "E" MAX
SEAFP- RA No OF ROW S	-04	.158 [4.01]	.187 [4.75]	.197 [5.01]	.226 [5.75]	.217 [5.51]	.246 [6.25]	.337 [8.56]	.366 [9.30]	.355 [9.01]	.384 [9.75]	.434 [11.01]	.463 [11.75]	.513 [13.03]	.542 [13.77]	.044 [1.12]	.015 [0.38]
	-06	.158 [4.01]	.187 [4.75]	.197 [5.01]	.226 [5.75]	.217 [5.51]	.246 [6.25]	.337 [8.56]	.366 [9.30]	.355 [9.01]	.384 [9.75]	.434 [11.01]	.463 [11.75]	.513 [13.03]	.542 [13.77]	.044 [1.12]	.015 [0.38]
	-08	.158 [4.01]	.187 [4.75]	.197 [5.01]	.226 [5.75]	.217 [5.51]	.246 [6.25]	.337 [8.56]	.366 [9.30]	.355 [9.01]	.384 [9.75]	.434 [11.01]	.463 [11.75]	.513 [13.03]	.542 [13.77]	.044 [1.12]	.015 [0.38]
	-10	.158 [4.01]	.187 [4.75]	.197 [5.01]	.226 [5.75]	.217 [5.51]	.246 [6.25]	.337 [8.56]	.366 [9.30]	.355 [9.01]	.384 [9.75]	.434 [11.01]	.463 [11.75]	.513 [13.03]	.542 [13.77]	.044 [1.12]	.015 [0.38]

TABLE 11																
		SEAM LEAD STYLE														
		-02.0		-03.0		-03.5		-06.5		-07.0		-09.0		-11.0		
		"S" FULLY MATED	"S" MAX	"S" FULLY MATED	"S" MAX	"S" FULLY MATED	"S" MAX	"S" FULLY MATED	"S" MAX	"S" FULLY MATED	"S" MAX	"S" FULLY MATED	"S" MAX	"S" FULLY MATED	"S" MAX	
SEAF-RA No Of ROWS	-04	.625 [15.88]	.654 [16.61]	.664 [16.87]	.693 [17.61]	.684 [17.37]	.713 [18.11]	.804 [20.43]	.833 [21.16]	.823 [20.90]	.852 [21.64]	.902 [22.92]	.931 [23.65]	.981 [24.93]	1.010 [25.66]	.301 [7.65]
	-06	.737 [18.72]	.766 [19.46]	.776 [19.72]	.805 [20.46]	.796 [20.22]	.825 [20.96]	.916 [23.27]	.945 [24.01]	.935 [23.75]	.964 [24.49]	1.014 [25.76]	1.043 [26.50]	1.093 [27.77]	1.122 [28.51]	.401 [10.19]
	-08	.837 [21.26]	.866 [22.00]	.876 [22.26]	.905 [23.00]	.896 [22.76]	.925 [23.50]	1.016 [25.81]	1.045 [26.55]	1.035 [26.29]	1.064 [27.03]	1.114 [28.30]	1.143 [29.04]	1.193 [30.31]	1.222 [31.05]	.501 [12.73]
	-10	.937 [23.80]	.966 [24.54]	.976 [24.80]	1.005 [25.54]	.996 [25.30]	1.025 [26.04]	1.116 [28.35]	1.145 [29.09]	1.135 [28.83]	1.164 [29.57]	1.214 [30.84]	1.243 [31.58]	1.293 [32.85]	1.322 [33.59]	.601 [15.27]

• **PROPRIETARY NOTE** •  
THIS DOCUMENT CONTAINS CONFIDENTIAL AND PROPRIETARY INFORMATION AND ALL DESIGN, MANUFACTURING, REPRODUCTION, USE, PATENT RIGHTS AND SALES RIGHTS ARE EXPRESSLY RESERVED BY SAMTEC, INC. THIS DOCUMENT SHALL NOT BE DISCLOSED, IN WHOLE OR PART, TO ANY UNAUTHORIZED PERSON OR ENTITY NOR REPRODUCED, TRANSFERRED OR INCORPORATED IN ANY OTHER PROJECT IN ANY MANNER WITHOUT THE EXPRESS WRITTEN CONSENT OF SAMTEC, INC.

**samtec**

520 PARK EAST BLVD, NEW ALBANY, IN 47150  
PHONE: 812-944-6733 FAX: 812-948-5047  
e-Mail info@SAMTEC.com code 55322



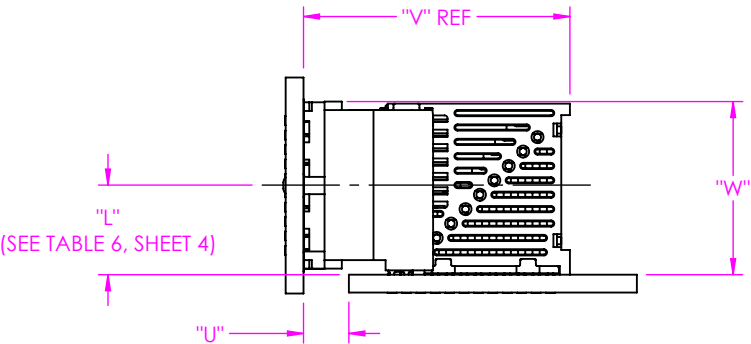


FIGURE 10  
SEAMP MATED WITH SEAFP-RA

TABLE 12						
		SEAMP LEAD STYLE				
		-02.0				"W"
		"U" FULLY MATED	"U" MAX	"V" FULLY MATED	"V" MAX	
SEAFP-RA No OF ROWS	-04	.158 [4.01]	.187 [4.75]	.625 [15.88]	.654 [16.61]	.301 [7.65]
	-06	.158 [4.01]	.187 [4.75]	.725 [18.42]	.754 [19.15]	.401 [10.19]
	-08	.158 [4.01]	.187 [4.75]	.825 [20.96]	.854 [21.69]	.501 [12.73]
	-10	.158 [4.01]	.187 [4.75]	.925 [23.50]	.954 [24.23]	.601 [15.27]

• PROPRIETARY NOTE •  
THIS DOCUMENT CONTAINS CONFIDENTIAL AND PROPRIETARY INFORMATION AND ALL DESIGN, MANUFACTURING, REPRODUCTION, USE, PATENT RIGHTS AND SALES RIGHTS ARE EXPRESSLY RESERVED BY SAMTEC, INC. THIS DOCUMENT SHALL NOT BE DISCLOSED, IN WHOLE OR PART, TO ANY UNAUTHORIZED PERSON OR ENTITY NOR REPRODUCED, TRANSFERRED OR INCORPORATED IN ANY OTHER PROJECT IN ANY MANNER WITHOUT THE EXPRESS WRITTEN CONSENT OF SAMTEC, INC.



520 PARK EAST BLVD, NEW ALBANY, IN 47150  
PHONE: 812-944-6733 FAX: 812-948-5047  
e-Mail info@SAMTEC.com code 55322  
SHEET 9 OF 9