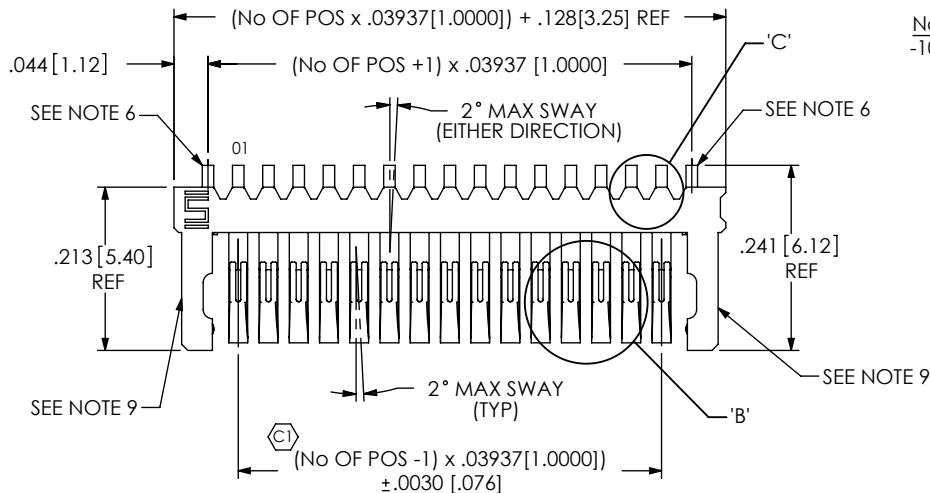


REVISION Q

J	JB	T Baggett
8/14/2008	ECN-95608	
SHT 1, NOTES: CHG NOTE 5 "...AND 15 TO 30 EMPTY POCKETS FOR LEADER/TRAILER" TO "...AND 14 EMPTY POCKETS ON TRAILER AND 34 EMPTY POCKETS ON LEADER".		
K	WP	C HUMPHRES
4/15/2010	ECN-129406	
SHT 1, ADD "SAMTEC WILL ONLY SUPPORT EXISTING BUSINESS ON THIS PRODUCT, 4/15/10"		
L	RL	W CHIANG
8/23/2010	ECN-137574	
CALLOUT, NO OF POSITIONS: ADD "-20, ADD (* = NOT TOOLED); SHT 2, TABLE 2: ADD -20 ROW		
M	JW	W CHIANG
6/10/2011	ECN-156081	
TOP VIEW: ADD "SEE NOTE 9"; NOTES: ADD NOTE 9.		
N	RL	W CHIANG
8/21/2011	ECN-156879	
RELEASE -20 POS FOR PRODUCTION; REM "SAMTEC WILL ONLY SUPPORT EXISTING BUSINESS ON THIS PRODUCT, 4/15/10"; NOTES: ADD "QUANTITY LESS THAN A FULL REEL..." TO NOTE 5.		
P	GP	D TERRELL
3/8/2012	ECN-173538	
NOTES, NOTE 5: CHG "STANDARD REEL HAS 1000 PCS AND 14 EMPTY POCKETS..." TO "STANDARD REEL HAS 1000 PCS AND WILL HAVE A LEADER AND TRAILER. QUANTITIES LESS THAN 1000 PCS WILL NOT HAVE A LEADER OR TRAILER"; TABLE 1: REMOVE BODY AND CONTACT CALLOUTS.		
Q	GP	D TERRELL
11/26/2013	ECN-216524	
ADD WATERMARK "EXISTING CUSTOMERS ONLY".		



SEL-1XX-XX-XXX-S-XX

No OF POSITIONS
-10, -15, -20, -25

LEAD STYLE
-01: .0250 [.635]
-02: .0500 [1.270]

PACKAGING
BLANK: NO PACKAGING SPECIFIED
-T: TAPE & REEL (FOR SAMTEC INTERNAL USE ONLY) [SEE NOTE 5]
-TR: TAPE & REEL (125 PCS MIN) [SEE NOTE 5]
ROW SPECIFICATION
-S: SINGLE (USE SEL-XX-S-XX)

PLATING SPECIFICATION

Ⓒ7 -FTL: FLASH SELECTIVE PURE TIN, MATTE FINISH (USE C-156-XX-FTL): .000003 MIN GOLD IN CONTACT AREA, .000120 MIN MATTE TIN ON TAIL, WITH .000050-.000150 NICKEL UNDERPLATE OVER ENTIRE CONTACT
Ⓒ8 -LTL: LIGHT SELECTIVE PURE TIN, MATTE FINISH (USE C-156-XX-LTL): .000010 MIN GOLD IN CONTACT AREA, .000120 MIN MATTE TIN ON TAIL, WITH .000050-.000150 NICKEL UNDERPLATE OVER ENTIRE CONTACT

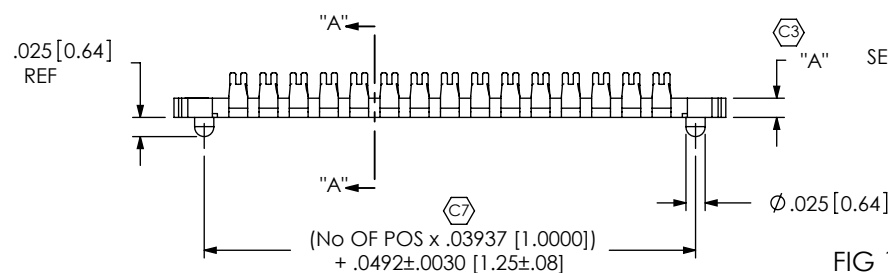
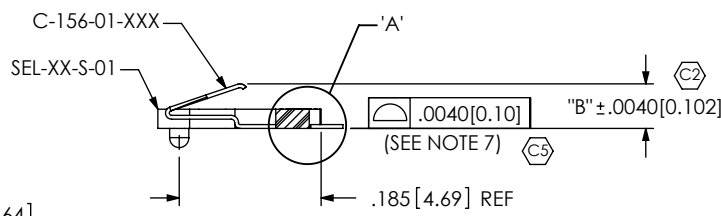


FIG 1

SEL-115-01-XXX-S SHOWN



SECTION "A"-"A"

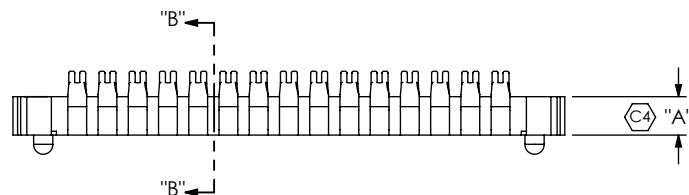
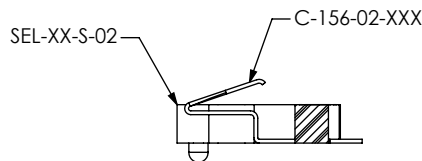


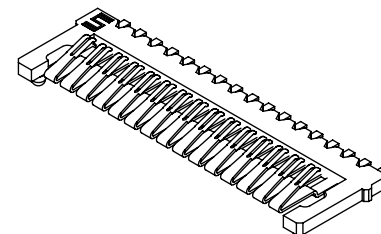
FIG 2

SEL-115-02-XXX-S SHOWN

[DIFFERENT AS SHOWN, OTHERWISE SAME AS -01 LEAD STYLE]



SECTION "B"-"B"



NOTES:

- Ⓒ REPRESENTS A CRITICAL DIMENSION.
- BURR ALLOWANCE: .0015 [0.038] MAX.
- CONTACT TO BE FLUSH TO .003 [0.08] RECESSED WITH RESPECT TO THE BODY.
- MAXIMUM ALLOWABLE BOW: .0025 [0.064].
- STANDARD REEL HAS 1000 PCS AND WILL HAVE A LEADER AND TRAILER. QUANTITIES LESS THAN 1000 PCS WILL NOT HAVE A LEADER OR TRAILER.
- OUTSIDE TAILS ARE WELD TABS; THEY WILL NOT CARRY SIGNAL.
- COPLANARITY INCLUDES BODY AND TAILS. TWO POINTS ON EACH PLASTIC END ARM TO BE INCLUDED IN COPLANARITY MEASUREMENT. (SEE SHEET 2, FIG 3)
- 1 LB. MIN RETENTION.
- MAX ALLOWABLE GATE VESTIGE: NOT TO EXTEND MORE THAN .004 [0.10] BEYOND THE OUTSIDE SURFACE OF THE BODY.

TABLE 1

STYLE	"A"	"B"
-01	.0250 [.635]	.0580 [1.473]
-02	.0500 [1.270]	.0830 [2.108]

UNLESS OTHERWISE SPECIFIED, DIMENSIONS ARE IN INCHES.
TOLERANCES ARE:
DECIMALS ANGLES
.XX: ±.01 [.3]
.XXX: ±.005 [.13]
.XXXX: ±.0020 [.051]

PROPRIETARY NOTE

THIS DOCUMENT CONTAINS INFORMATION CONFIDENTIAL AND PROPRIETARY TO SAMTEC, INC. AND SHALL NOT BE REPRODUCED OR TRANSFERRED TO OTHER DOCUMENTS OR DISCLOSED TO OTHERS OR USED FOR ANY PURPOSE OTHER THAN THAT WHICH IT WAS OBTAINED WITHOUT THE EXPRESSED WRITTEN CONSENT OF SAMTEC, INC.

MATERIAL: DO NOT SCALE DRAWING SHEET SCALE: 4:1
INSULATOR: DUPONT LCP17235; COLOR: BLACK
CONTACT: PHOS BRONZE

samtec

520 PARK EAST BLVD, NEW ALBANY, IN 47150
PHONE: 812-944-6733 FAX: 812-948-5047
e-Mail: info@SAMTEC.com code: 55322

DESCRIPTION:
1mm SINGLE ELEMENT LOW PROFILE ASSEMBLY

DWG. NO. SEL-1XX-XX-XXX-S-XX

BY: DEAN P 2/14/2000 SHEET 1 OF 2

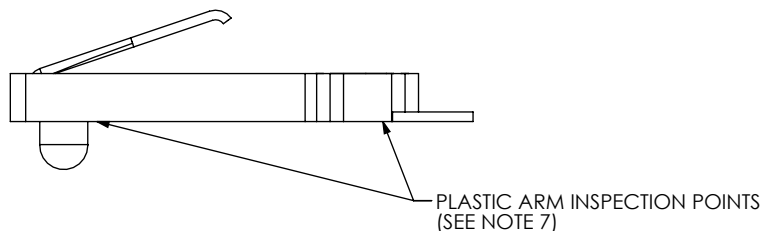
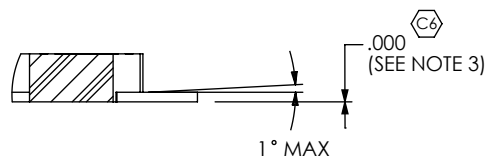
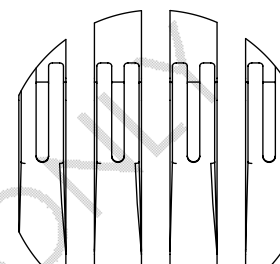


FIG 3
END VIEW FOR COPLANARITY INSPECTION

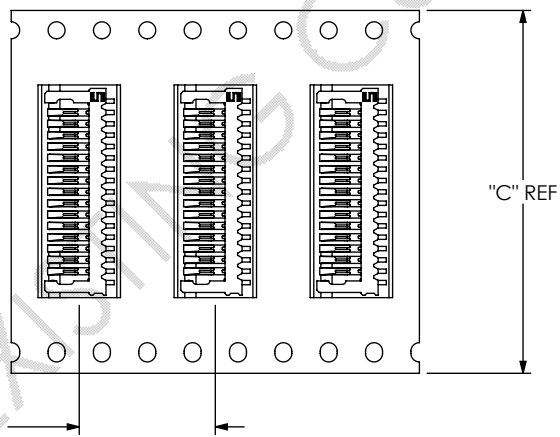


DETAIL 'A'
SCALE 10:1



DETAIL 'B'
SCALE 10:1

PACKAGING VIEW
(SEL-115-02-XXX-S-TR SHOWN)
(SEE NOTE 5)



DIRECTION OF UNREELING
POCKET NOT DETAILED

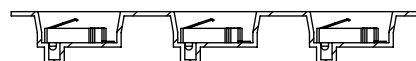
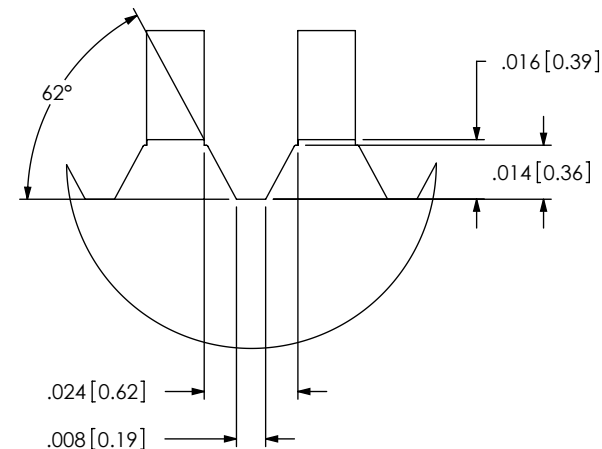


TABLE 2	
POSITIONS	"C"
-10	.9449[24.000]
-15	1.2598[32.000]
-20	1.7323[44.000]
-25	1.7323[44.000]



DETAIL 'C'
SCALE 20:1

PROPRIETARY NOTE

THIS DOCUMENT CONTAINS INFORMATION
CONFIDENTIAL AND PROPRIETARY TO
SAMTEC, INC. AND SHALL NOT BE REPRODUCED
OR TRANSFERRED TO OTHER DOCUMENTS OR
DISCLOSED TO OTHERS OR USED FOR ANY
PURPOSE OTHER THAN THAT WHICH IT WAS
OBTAINED WITHOUT THE EXPRESSED WRITTEN
CONSENT OF SAMTEC, INC.

DO NOT SCALE DRAWING

SHEET SCALE: 1:0.333333

samtec

520 PARK EAST BLVD, NEW ALBANY, IN 47150
PHONE: 812-944-6733 FAX: 812-948-5047
e-Mail: info@SAMTEC.com code: 55322

DESCRIPTION:
1mm SINGLE ELEMENT LOW PROFILE ASSEMBLY

DWG. NO.
SEL-1XX-XX-XXX-S-XX

BY: DEAN P 2/14/2000 SHEET 2 OF 2